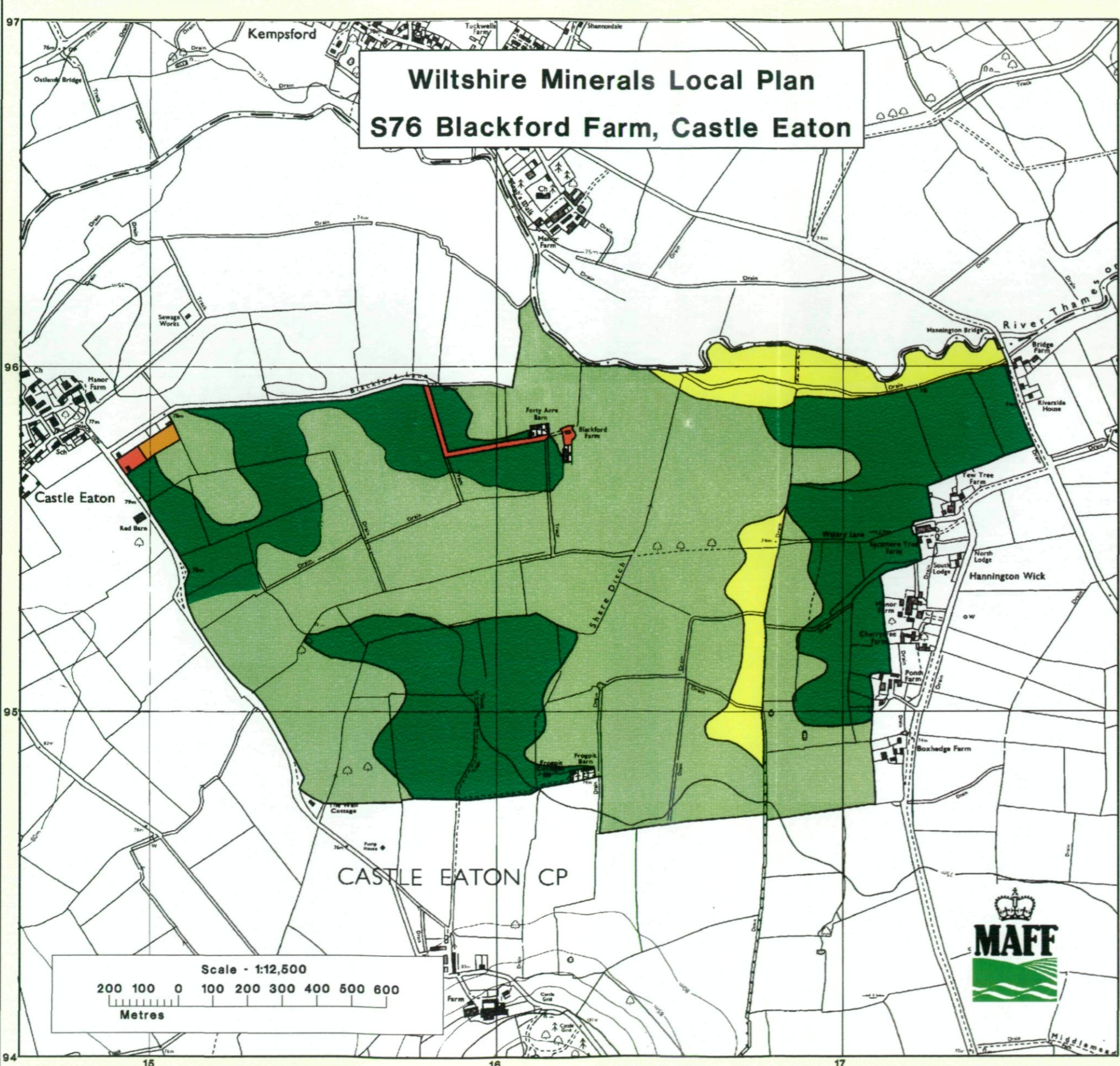
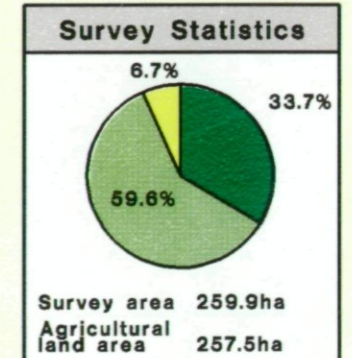
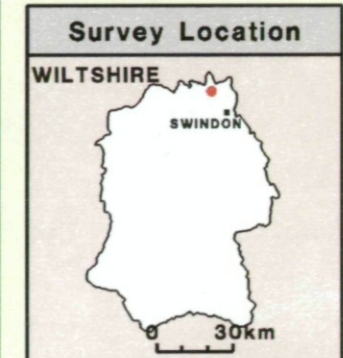


# Wiltshire Minerals Local Plan S76 Blackford Farm, Castle Eaton



## Ministry of Agriculture Fisheries and Food Agricultural Land Classification

Agricultural Land		
ALC grade	Agricultural land quality	Degree of limitation
1	* <span style="display: inline-block; width: 15px; height: 15px; background-color: #0056b3; border: 1px solid black;"></span> Excellent	None or Very minor
2	* <span style="display: inline-block; width: 15px; height: 15px; background-color: #4682b4; border: 1px solid black;"></span> Very good	Minor
3a	<span style="display: inline-block; width: 15px; height: 15px; background-color: #008000; border: 1px solid black;"></span> Good	Moderate
3b	<span style="display: inline-block; width: 15px; height: 15px; background-color: #90ee90; border: 1px solid black;"></span> Moderate	Moderate to severe
4	<span style="display: inline-block; width: 15px; height: 15px; background-color: #ffff00; border: 1px solid black;"></span> Poor	Severe
5	* <span style="display: inline-block; width: 15px; height: 15px; background-color: #8b4513; border: 1px solid black;"></span> Very poor	Very severe
Other Land Categories		
Urban	<span style="display: inline-block; width: 15px; height: 15px; background-color: #ff4500; border: 1px solid black;"></span> Agricultural buildings	<span style="display: inline-block; width: 15px; height: 15px; border: 1px solid black; border-style: dashed;"></span>
Non-Agricultural	<span style="display: inline-block; width: 15px; height: 15px; background-color: #ffa500; border: 1px solid black;"></span> Open water	<span style="display: inline-block; width: 15px; height: 15px; border: 1px solid black; border-style: dotted;"></span> *
Woodland	*W <span style="display: inline-block; width: 15px; height: 15px; border: 1px solid black;"></span> Not Surveyed	*NS <span style="display: inline-block; width: 15px; height: 15px; border: 1px solid black;"></span>
* Grade not present within survey area Further details contained in revised Agricultural Land Classification M.A.F.F.		



The information is accurate at the base map scale but any enlargement would be misleading.

Reproduction in whole or in part by any means is prohibited without the prior permission of M.A.F.F.

Produced by the Resource Planning Team, ADAS Statutory Unit, Taunton. Jan 1993  
 Reference no. 73\92  
 Based on the 1990 Ordnance Survey 1:10 000 map with the permission of the Controller of her Majesty's Stationery Office, Crown Copyright Reserved  
 Crown Copyright Reserved 1993



576 Blackford Farm  
Castle Easton  
73/92

### AGRICULTURAL LAND CLASSIFICATION

### SAMPLE POINT MAP

- 1 Location of soil pit
- 1 Location of auger sample point

