



A clear solution for farmers

CATCHMENT SENSITIVE FARMING

Priority Catchment Targeting Summary April 2011 – March 2014

River Basin District: Anglian

Catchment: Waveney

Total Area: 864 Km²

Reasons for designation

Failing Drinking Water Protected Areas for WFD due to high nitrates (results in T1a & T2– where evidence identifies T1a) as area of greatest pressure and T2 is rest of DrWPA/SGZ catchment area upstream of surface water abstraction at Barsham Ship meadow) and same abstraction point shows high levels of particular pesticides associated with seasonal use and rainfall/drainflow and turbidity (sediment) (T1a & 2). In T1b) Various SSSIs (see below) are in unfavourable condition - suspected due to DWPA phosphates attached to sediment (T1a & 1b, 2 & 3) – we are seeking further evidence to demonstrate this, (T1a & 1b)). As a secondary factor poor entomology (diatom) WFD status (Mendlesham stream) is believed to be due to DWPA phosphates attached to sediment (T1a).

Priorities

Drinking Water Protected Area (Surface) – Waveney Catchment upstream of NWL intake @ Barsham (Target Areas involved 1a & 2)

SSSI - areas upstream and with connectivity to Geldeston Meadows, Sprat's Water, Stanley and Alder Carrs. (Target Areas involved 1a & 1b, 2 & 3)

Good Ecological Status – Mendlesham Stream (T1a) - *Bad*; Most of remainder of catchment (T1b particularly and 2 & 3 generally) - *Moderate*

Objectives

Reduce Nitrates and Phosphates (and Ammonium to avoid Freshwater Fish Directive exceedances) entering watercourses from manures, bio waste and livestock infrastructure sources by improved manure and waste storage management and improved crop utilisation. Reduce individual farm high loading by promoting wider take-up and use of manures on non- livestock holdings.

Reduce Problem Pesticides contamination (particularly metaldehyde, mecoprop, bentazone, propyzamide and carbetamide) by improving sprayer/ pellet spreader filling management, improved field application, soil management practices and reducing run off from tramlines.

Reduce sediments and associated phosphates entering watercourses from land and track run-off by utilising ELS/ ELS and CFE resource protection options, track and gateway improvements and tramline management.

Delivery

T1a & 1b prioritised for engagement: One to one visits for Nutrient Management Planning, Livestock and Manure Storage infrastructure, Whole Farm Appraisals, Soil and Manure Analysis, Pesticide Filling Areas and Biobeds. Farmer self monitoring and newsletters etc. to increase awareness. Appropriate Targeting and prioritisation of the Capital Grant Scheme options and their promotion.

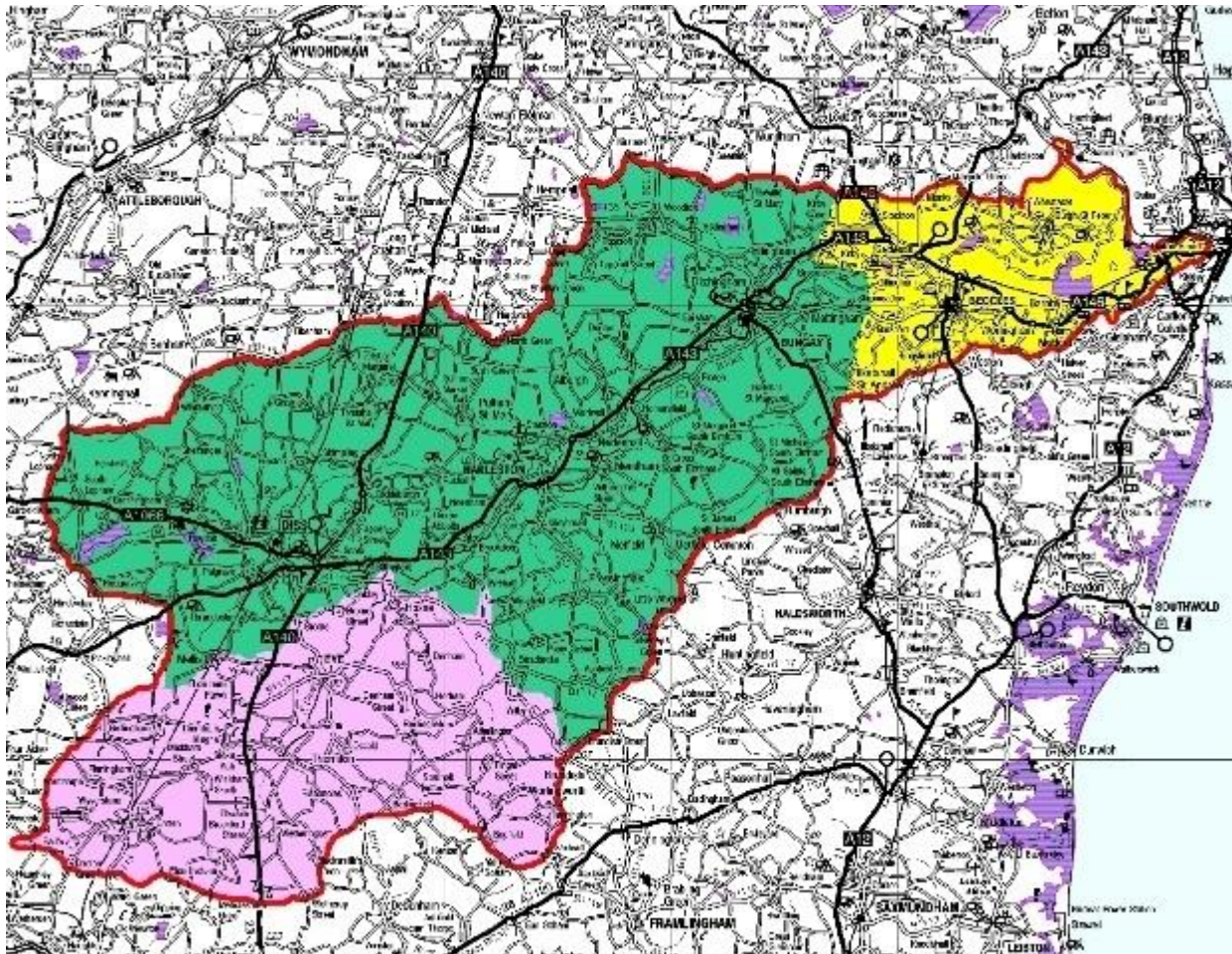
T2 & T3: Lesser priority for 1:1 but addressing holdings with particular issues and concerns (+care & maintenance).

T1a & 1b,2 & 3: Workshops and events re Nutrient Management, Best Practice promotion, awareness raising etc.

Targeting Map

Waveney Target Areas

Pink – Target 1a) – Dove Sub Catchment. Yellow- 1b) Geldeston to Carlton sub catchment
Green +Pink- Target 2- Whole Waveney catchment upstream of Barsham (includes T1)
Red Outline – Target 3- Whole of Waveney Catchment upstream of Oulton broad (Includes T2)
(Mauve – SSSIs)



Scale 1:255,974
0 1 2 3 4 5 Kilometers

This map is reproduced from Ordnance Survey material with the permission of Ordnance Survey on behalf of the Controller of Her Majesty's Stationery Office © Crown copyright. Unauthorised reproduction infringes Crown copyright and may lead to prosecution or civil proceedings. Natural England 100046223 2013.

Map Produced on 18 January 2013 from GEN-i

