



**A clear solution  
for farmers**  
CATCHMENT SENSITIVE FARMING

## **Priority Catchment Targeting Summary March 2011 – March 2014**

**River Basin District: South East  
Catchment: Arun & Western Rother**

**Total Area: 976 km<sup>2</sup>**

### **Reasons for designation**

The Arun and Western Rother became a priority catchment in 2008 as part of Phase 2 and a catchment officer was appointed in January 2009. Water quality issues within the catchment include high nitrates in groundwater especially on the Lower Greensand Aquifer and sediment problems on the Western Rother affecting the quality of drinking water abstractions and the river ecology.

### **Priorities**

Drinking Water Protected Area (Groundwater) – The Lower Greensand Arun and Western Streams aquifer fails due to high and rising trends of nitrate at Hardham and Rogate. The groundwater body is also at risk for nitrates due to rising trends of nitrate at Lodsworth.

Drinking Water Protected Area (Surface) – The Western Rother river is well used for public water supply with abstractions at Hardham. Robust local evidence of frequent outages and increased drinking water treatment processing costs due to sediment loads at the Hardham surface water off-take.

None of the water bodies in the Western Rother catchment meet the Water Framework Directive requirements for Good Ecological Status (GES). Sediment from agriculture has been identified as a significant factor preventing GES.

### **Objectives**

Reduce sources of nitrate leaching to groundwater and run-off to surface waters via a range of measures e.g. promoting best practice measures relating to manure and fertiliser use, promoting good soil management, use of cover crops and delivery control measures.

Reduce sources of sediment and phosphate loss to surface waters via a range of measures e.g. maintaining good soil structure, promoting regular soil & manure testing and promoting control measures to prevent sediment mobilisation and delivery.

### **Delivery**

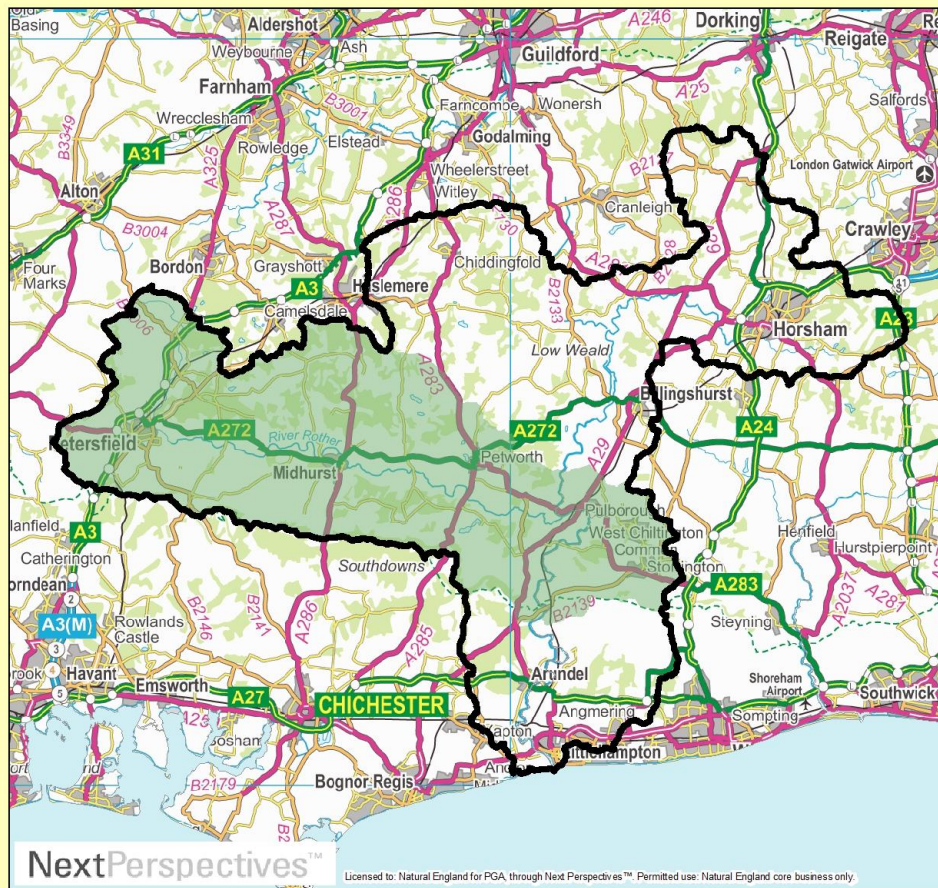
Delivery focused on the ground and surface drinking water protected areas for 2011-14, covering all of the Western Rother catchment along with sections of the middle and lower Arun.

Farms in the Catchment Sensitive Farming (CSF) target area (see map below) are eligible for free 1:1 direct training, including whole farm appraisal, soil husbandry, nutrient management planning, farmyard infrastructure, soil sampling & analysis.

All farms in the catchment to receive CSF newsletters and receive invitations to attend

farm training events and invited to apply for funding through the annual Capital Grant Scheme.

## Targeting Map



### Catchment Sensitive Farming

#### Arun & Western Rother Catchment Map

Key:

- CSF Arun & Western Rother
- CSF Target Area

0 4 8 16  
Kilometres

Scale (at A4): 1:304,770



Map produced by CSF.  
Date: 01/04/2012.  
Map Reference: 001  
© Crown copyright and database rights 2012. Ordnance Survey 100022021.



**A clear solution for farmers**  
ENGLAND CATCHMENT SENSITIVE FARMING DELIVERY INITIATIVE

NextPerspectives™

Licensed to Natural England for PGA, through Next Perspectives™. Permitted use: Natural England core business only.