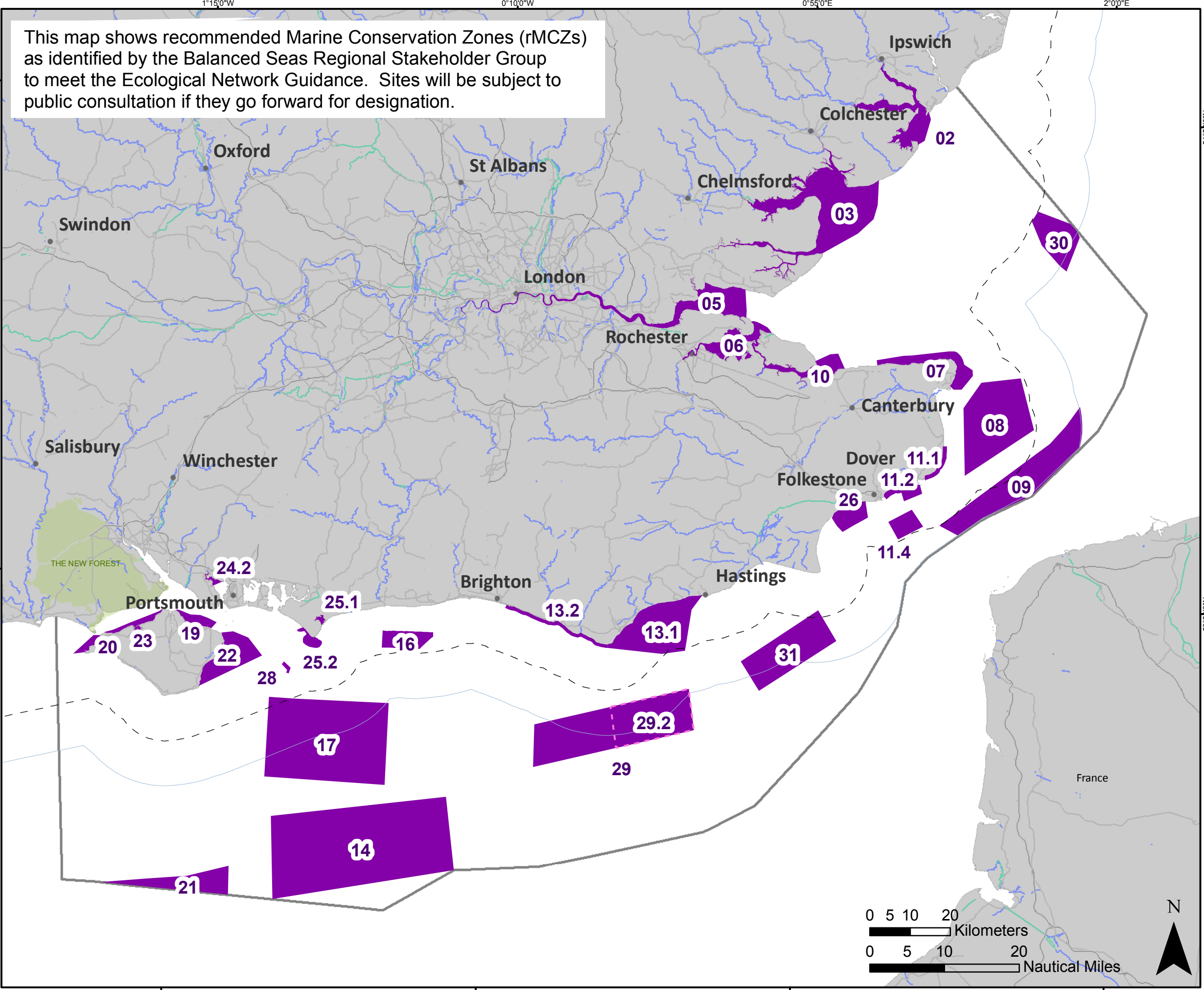


Recommended Marine Conservation Zones (rMCZs)

Version 1.0 August 2011
 Scale 1:917,705
 Projection UTM Zone 31N



This map shows recommended Marine Conservation Zones (rMCZs) as identified by the Balanced Seas Regional Stakeholder Group to meet the Ecological Network Guidance. Sites will be subject to public consultation if they go forward for designation.



Recommended Marine Conservation Zones (rMCZs)

- 2 Stour and Orwell
- 3 Blackwater, Crouch, Roach and Colne Estuaries
- 5 Thames Estuary
- 6 Medway Estuary
- 7 Thanet Coast
- 8 Goodwin Sands
- 9 Offshore Foreland
- 10 The Swale Estuary
- 11.1 Dover to Deal
- 11.2 Dover to Folkestone
- 11.4 Folkestone Pomerania
- 13.1 Beachy Head East
- 13.2 Beachy Head West
- 14 Offshore Brighton
- 16 Kingmere
- 17 Offshore Overfalls
- 19 Norris to Ryde
- 20 The Needles
- 21 Wight-Barfleur Extension
- 22 Bembridge
- 23 Yarmouth to Cowes
- 24.2 Fareham Creek
- 25.1 Pagham Harbour
- 25.2 Selsey Bill and the Hounds
- 26 Hythe Bay
- 28 Utopia
- 29 East Meridian
- 29.2 East Meridian (Eastern section)
- 30 Kentish Knock East
- 31 Inner Bank

Legend

- - - 6 Nautical Mile limit
- 12 Nautical Mile limit
- rMCZs
- Balanced Seas