

Liverpool Bay / Bae Lerpwl

Map 1 o'r/ of 1

Côd Safle y GE
EC Site Code **UK9020294**

Ardal Gwarchodaeth Arbennig (AGA)
Special Protection Area (SPA)

Arwynebedd cyfan **170,292.94 ha**
Total area

Hydred Longitude **03° 12' 34"** Gorllewin West
Lledred Latitude **53° 36' 10"** Gogledd North



N.G. Mae'r ffigurau Lledred/Hydred i gyd wedi deillio o System Geodesig y Byd 84 (WGS 84)
N.B. All Latitude/Longitude figures have been derived from World Geodetic System 84 (WGS 84).

Tafluniad map: Y Grid Cenedlaethol Prydeinig
Projection: British National Grid

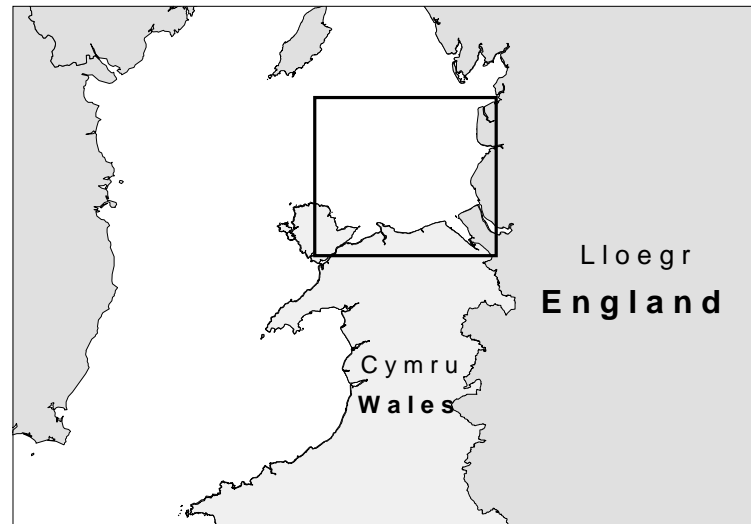
Rhif diweddaraf **6** **20/08/2010**
Version number

Graddfa / Scale **1: 350,000**

Noder: Cafodd y data eu cymryd ar raddfa 1:2500 o Brif Fap yr Arolwg Ordnans 2006, eu gosod ar Siart y Morlys OS1826, ar raddfa 1:200,000 a'u lleihau i 1:350,000.
Note: Data captured at 1:2500 scale from Ordnance Survey Master Map, 2006 placed on Admiralty Chart OS1826, scale 1:200,000 and reduced to 1:350,000.

Yn seiliedig a'r map hwn o ddeunydd yr Arolwg Ordnans gyda chaniatâd Arolwg Ordnans ar ran Rheolwr Llyfrfa Ei Mawrhydi © Hawffraint y Goron. Mae atgynhyrchu heb ganiatâd yn torri hawffraint y Goron a gall hyn arwain at erlyniad neu achos sifil.
Rhif trwydded Cyngor Cefn Gwlad Cymru 100018813. 2009

This map is based upon Ordnance Survey material with the permission of Ordnance Survey on behalf of the Controller of Her Majesty's Stationery Office © Crown copyright. Unauthorised reproduction infringes Crown copyright and may lead to prosecution or civil proceedings. Countryside Council for Wales Licence No. 100018813 2009

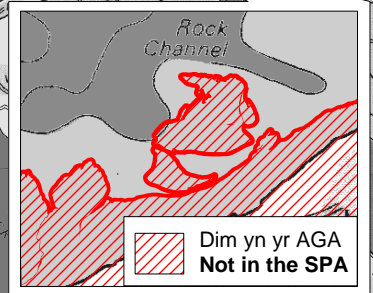
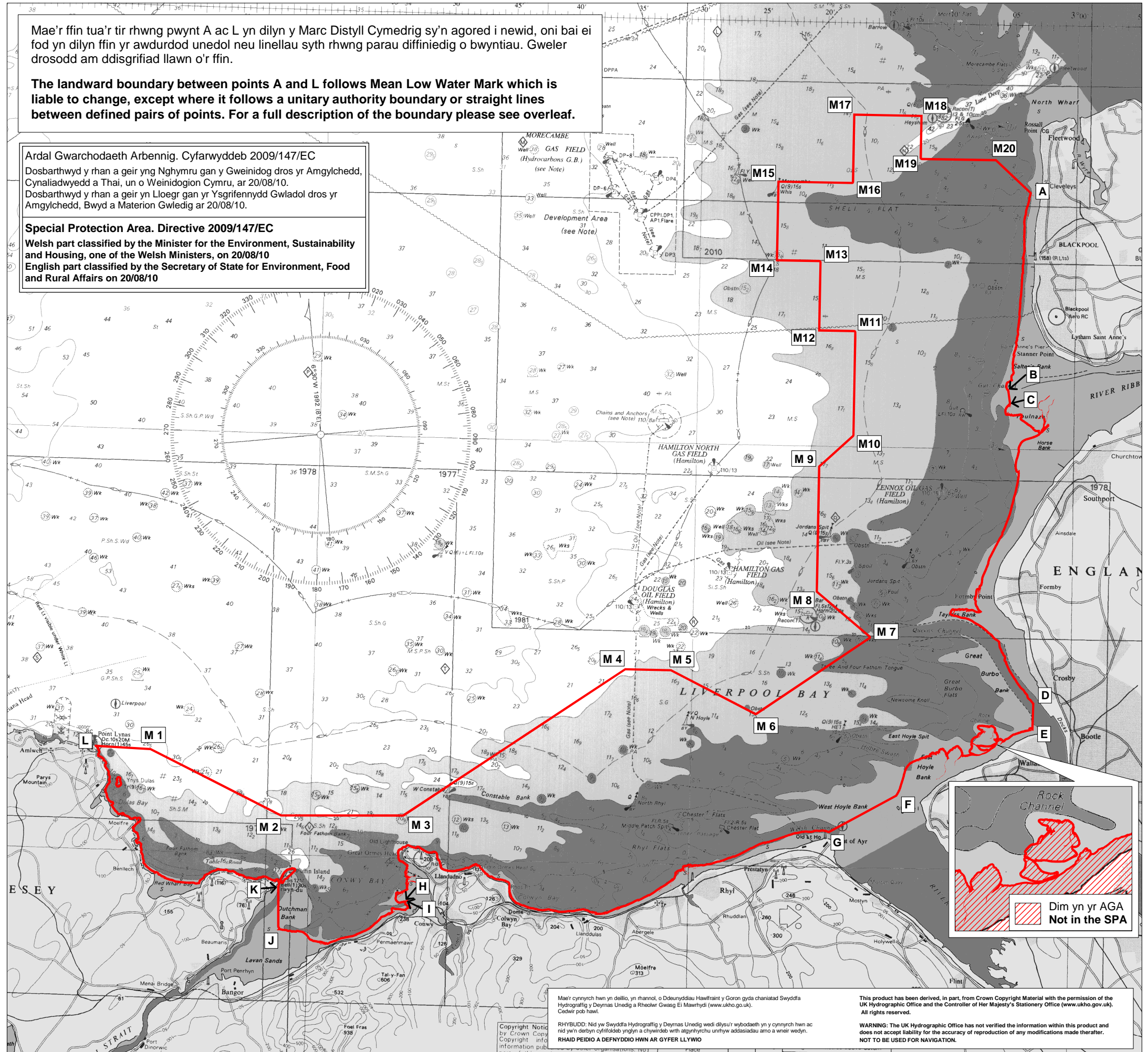


Mae'r ffin tua'r tir rhwng pwynt A ac L yn dilyn y Marc Distyll Cymedrig sy'n agored i newid, oni bai ei fod yn dilyn ffin yr awdurdod unedol neu linellau syth rhwng parau diffiniedig o bwntiau. Gweler drosodd am ddisgrifiad llawn o'r ffin.

The landward boundary between points A and L follows Mean Low Water Mark which is liable to change, except where it follows a unitary authority boundary or straight lines between defined pairs of points. For a full description of the boundary please see overleaf.

Ardal Gwarchodaeth Arbennig. Cyfarwydddeb 2009/147/EC
Dosbarthwyd y rhan a geir yng Nghymru gan y Gweinidog dros yr Amgylchedd, Cynaliadwyedd a Thai, un o Weinidogion Cymru, ar 20/08/10.
Dosbarthwyd y rhan a geir yn Lloegr gan yr Ysgrifennydd Gwladol dros yr Amgylchedd, Bwyd a Materion Gwledig ar 20/08/10.

Special Protection Area. Directive 2009/147/EC
Welsh part classified by the Minister for the Environment, Sustainability and Housing, one of the Welsh Ministers, on 20/08/10
English part classified by the Secretary of State for Environment, Food and Rural Affairs on 20/08/10



Mae'r cynnyrch hwn yn deillio, yn rhannol, o Ddeunyddiau Hawffraint y Goron gyda chaniatâd Swyddfa Hydrograffig y Deyrnas Unedig a Rheolwr Gwasg Ei Mawrhydi (www.ukho.gov.uk). Cedwir pob hawl.

RHYBUDD: Nid yw Swyddfa Hydrograffig y Deyrnas Unedig wedi dilysu'r wybodaeth yn y cynnyrch hwn ac nid yw'n derbyn cyfrifoldeb ynghyd â chywbed wrth atgynhyrchu unrhyf addasiadau amau a wneir wedyn.
RHAID PEIDIO A DEFNYDDIO HWN AR GYFER LLYWIO

This product has been derived, in part, from Crown Copyright Material with the permission of the UK Hydrographic Office and the Controller of Her Majesty's Stationery Office (www.ukho.gov.uk). All rights reserved.
WARNING: The UK Hydrographic Office has not verified the information within this product and does not accept liability for the accuracy of reproduction of any modifications made thereafter.
NOT TO BE USED FOR NAVIGATION.

Liverpool Bay / Bae Lerpwl
Ardal Gwarchodaeth Arbennig (AGA)

Disgrifiad o'r ffin
Gweler drosodd am fap

Mae'r ffin tua'r tir rhwng pwynt A ac L yn dilyn y Marc Distyll Cymedrig sy'n agored i newid, oni bai ei fod yn dilyn ffin yr awdurdod unedol neu linellau syth rhwng parau diffiniedig o bwytiau:

- **B i C**
- **D i E**
- **G i F**
- **H i I**
- **J i K**

O bwyt **M20** cymrwch gyfeirbwynt 133° o'r Gogledd Cywir; pwynt **A** yw'r man ble mae'r llinell yma'n croesi'r marc distyll cymedrig.

Mae'r llinell sy'n uno pwyntiau **B i C** yn dilyn ffin sir Gaerhirfryn.

Pwyntiau **D** ac **E** yw'r manau ble mae llinell benodol ar draws ceg afon Merswy'n croesi'r marc distyll cymedrig; y ddau bwyt sefydlog yw lledred 53° 27.94' Gogledd, hydred 03° 2.49' Gorllewin, a lledred 53° 26.66' Gogledd, hydred 03° 2.54' Gorllewin.

Yng ngenau Aber Afon Dyfrdwy, pwynt **F** yw lle mae'r llinell hydred 03° 13.17' gorllewin yn croesi'r Marc Distyll Cymedrig a phwynt **G** yw lle mae'r llinell hydred 03° 18.68' gorllewin yn croesi'r Marc Distyll Cymedrig; mae'n bosibl y bydd y ddau yn newid.

Pwyntiau **H** ac **I** yw'r manau ble mae llinell hydred 03° 52.0' Gorllewin yn croesi'r marc distyll cymedrig o boptu prif sianel Aber Afon Conwy.

Pwyntiau **J** a **K** yw'r manau ble mae llinell hydred 04° 02.43' Gorllewin yn croesi'r marc distyll cymedrig ar fynediad dwyreiniol Afon Menai.

O bwyt **M1** cymrwch gyfeirbwynt 273° o'r Gogledd Cywir; pwynt **L** yw'r man ble mae'r llinell yma'n croesi'r marc distyll cymedrig. Mae Goleudy Trwyn Eilian hefyd ar yr un cyfeiriant.

| Pwynt | Lledred Graddau | Lledred Munudau | Hydred Graddau | Hydred Munudau |
|-------|-----------------|-----------------|----------------|----------------|
| L | Gweler uchod | | | |
| M1 | 53 | 24.9 N | 4 | 12.8 W |
| M2 | 53 | 21.93 N | 4 | 2.25 W |
| M3 | 53 | 22.08 N | 3 | 52.6 W |
| M4 | 53 | 29.3 N | 3 | 35.2 W |
| M5 | 53 | 29.3 N | 3 | 31.5 W |
| M6 | 53 | 27.3 N | 3 | 24.7 W |
| M7 | 53 | 31 N | 3 | 15.8 W |
| M8 | 53 | 33.1 N | 3 | 20.1 W |
| M9 | 53 | 39.1N | 3 | 20.1 W |
| M10 | 53 | 40.6 N | 3 | 17.4 W |
| M11 | 53 | 45.5 N | 3 | 17.4 W |
| M12 | 53 | 45.5 N | 3 | 20.3 W |
| M13 | 53 | 48.8 N | 3 | 20.3 W |
| M14 | 53 | 48.8 N | 3 | 23.8 W |
| M15 | 53 | 52.65 N | 3 | 23.8 W |
| M16 | 53 | 52.65 N | 3 | 17.8 W |
| M17 | 53 | 55.9 N | 3 | 17.8 W |
| M18 | 53 | 55.9 N | 3 | 12.2 W |
| M19 | 53 | 53.85 N | 3 | 12.2 W |
| M20 | 53 | 53.85 N | 3 | 6.2 W |
| A | Gweler uchod | | | |

Liverpool Bay / Bae Lerpwl
Special Protection Area (SPA)

Boundary description
See overleaf for map

The landward boundary between points **A** and **L** follows Mean Low Water Mark which is liable to change, except where it follows a unitary authority boundary or straight lines between defined pairs of points:

- **B to C**
- **D to E**
- **G to F**
- **H to I**
- **J to K**

From point **M20** take a bearing 133° from True North; point **A** is where this line crosses MLWM.

The line joining points **B** to **C** follows the Lancashire county boundary.

Points **D** and **E** are where a fixed line across the mouth of the Mersey crosses MLWM; the two fixed points are latitude 53° 27.94' North, longitude 03° 2.49' West, and latitude 53° 26.66' North, longitude 03° 2.54' West.

At the mouth of the Dee Estuary, point **F** is where the line of longitude 03° 13.17' West crosses Mean Low Water Mark and point **G** is where the line of longitude 03° 18.68' West crosses Mean Low Water Mark; both are liable to change.

Points **H** and **I** are where the line of longitude 03° 52.0' West crosses MLWM on either side of the main channel of the Conwy Estuary.

Points **J** and **K** are where the line of longitude 04° 02.43' West crosses MLWM on either side of the eastern entrance to the Menai Strait.

From point **M1** take a bearing 273° from True North; point **L** is where this line crosses MLWM. Point Lynas lighthouse also lies on the same bearing.

| Point | Latitude Degrees | Latitude Minutes | Longitude Degrees | Longitude Minutes |
|-------|------------------|------------------|-------------------|-------------------|
| L | See above | | | |
| M1 | 53 | 24.9 N | 4 | 12.8 W |
| M2 | 53 | 21.93 N | 4 | 2.25 W |
| M3 | 53 | 22.08N | 3 | 52.6 W |
| M4 | 53 | 29.3 N | 3 | 35.2 W |
| M5 | 53 | 29.3 N | 3 | 31.5 W |
| M6 | 53 | 27.3 N | 3 | 24.7 W |
| M7 | 53 | 31 N | 3 | 15.8 W |
| M8 | 53 | 33.1 N | 3 | 20.1 W |
| M9 | 53 | 39.1N | 3 | 20.1 W |
| M10 | 53 | 40.6 N | 3 | 17.4 W |
| M11 | 53 | 45.5 N | 3 | 17.4 W |
| M12 | 53 | 45.5 N | 3 | 20.3 W |
| M13 | 53 | 48.8 N | 3 | 20.3 W |
| M14 | 53 | 48.8 N | 3 | 23.8 W |
| M15 | 53 | 52.65 N | 3 | 23.8 W |
| M16 | 53 | 52.65 N | 3 | 17.8 W |
| M17 | 53 | 55.9 N | 3 | 17.8 W |
| M18 | 53 | 55.9 N | 3 | 12.2 W |
| M19 | 53 | 53.85 N | 3 | 12.2 W |
| M20 | 53 | 53.85 N | 3 | 6.2 W |
| A | See above | | | |