



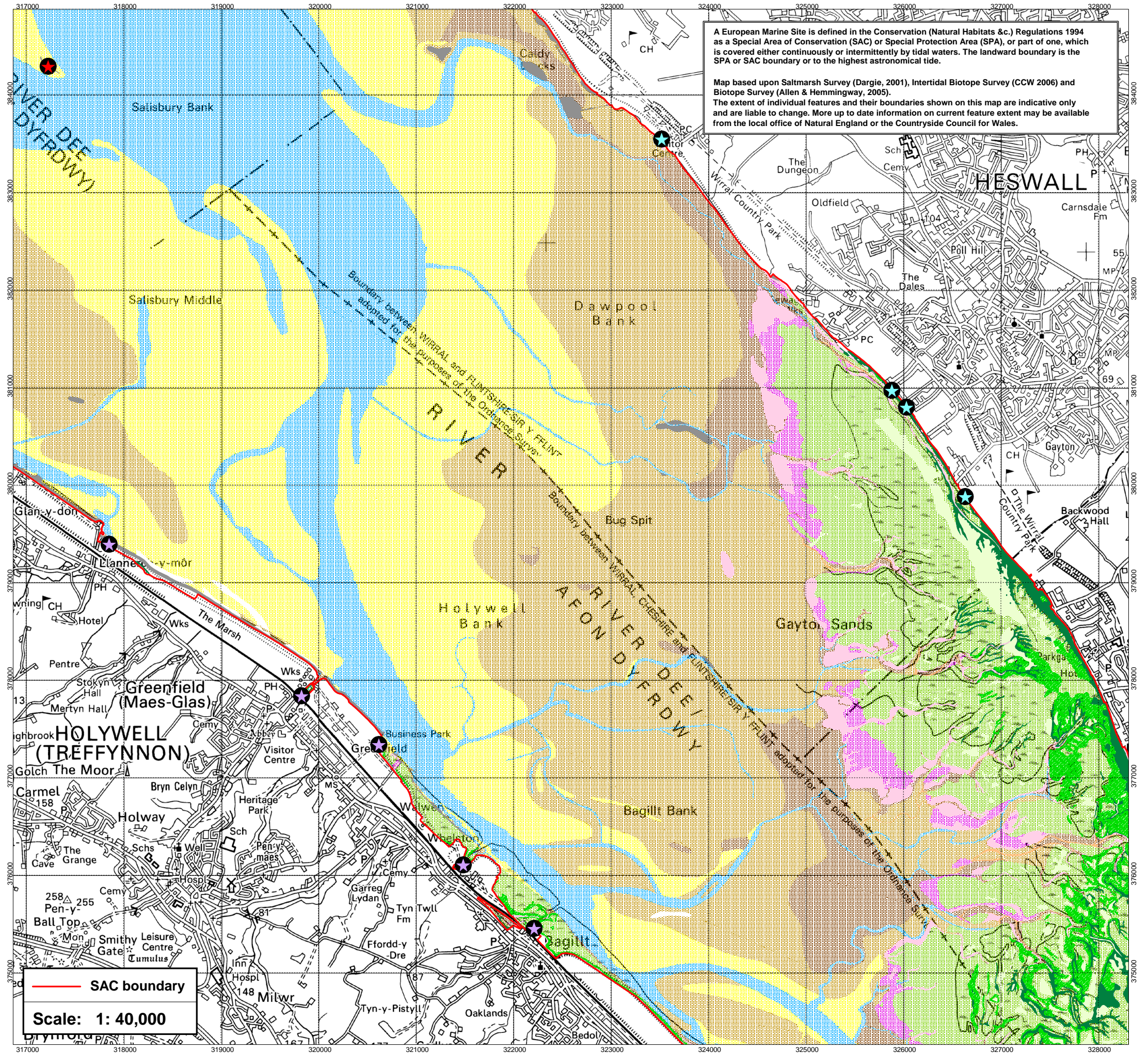
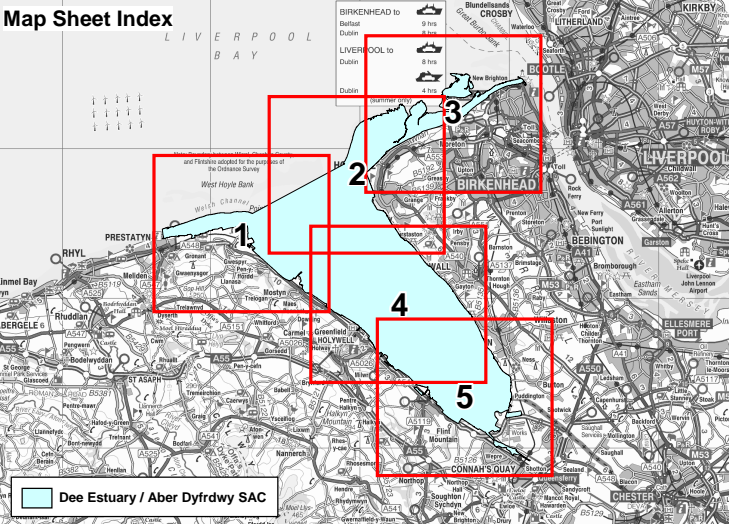
# Dee Estuary / Aber Dyfrdwy SAC Marine Habitat Features

Map 4 / 5

EC Site Code UK0030131

SAC Feature	Sub-feature
Mudflats and sandflats not covered by seawater at low tide	Gravel and clean sand communities
	Muddy sand communities including cocklebeds
	Mud communities
	Mudflats and sandflats not surveyed
Salicornia and other annuals colonising mud and sand	Possible pioneer low marsh communities (Not surveyed due to different survey dates. See note on map.)
	Pioneer low marsh communities
	Ephemeral saltmarsh vegetation
Atlantic salt meadow	Mosaic of saltmarsh communities / saltpans
	Low to mid marsh communities
	Mid to upper marsh communities
	Transitional high marsh communities
Estuary	Annual vegetation of driftlines
	Notable hard substrate communities
	Annual vegetation of driftlines (outside the area encompassed within the estuary feature)
<b>Other habitats</b>	
Other Estuarine communities	Subtidal sediment communities
	Intertidal hard substrate communities
N.B. No notable subtidal sediment communities have been identified to date.	

This map is reproduced from Ordnance Survey material with the permission of Ordnance Survey on behalf of the Controller of Her Majesty's Stationary Office. Crown copyright. Unauthorised reproduction infringes Crown copyright and may lead to prosecution or civil proceedings. Countryside Council for Wales Licence No. 100018813 4 June 2003 Edited 30 September 2009



A European Marine Site is defined in the Conservation (Natural Habitats &c.) Regulations 1994 as a Special Area of Conservation (SAC) or Special Protection Area (SPA), or part of one, which is covered either continuously or intermittently by tidal waters. The landward boundary is the SPA or SAC boundary or to the highest astronomical tide.

Map based upon Saltmarsh Survey (Dargie, 2001), Intertidal Biotope Survey (CCW 2006) and Biotope Survey (Allen & Hemmingway, 2005). The extent of individual features and their boundaries shown on this map are indicative only and are liable to change. More up to date information on current feature extent may be available from the local office of Natural England or the Countryside Council for Wales.

SAC boundary

Scale: 1: 40,000