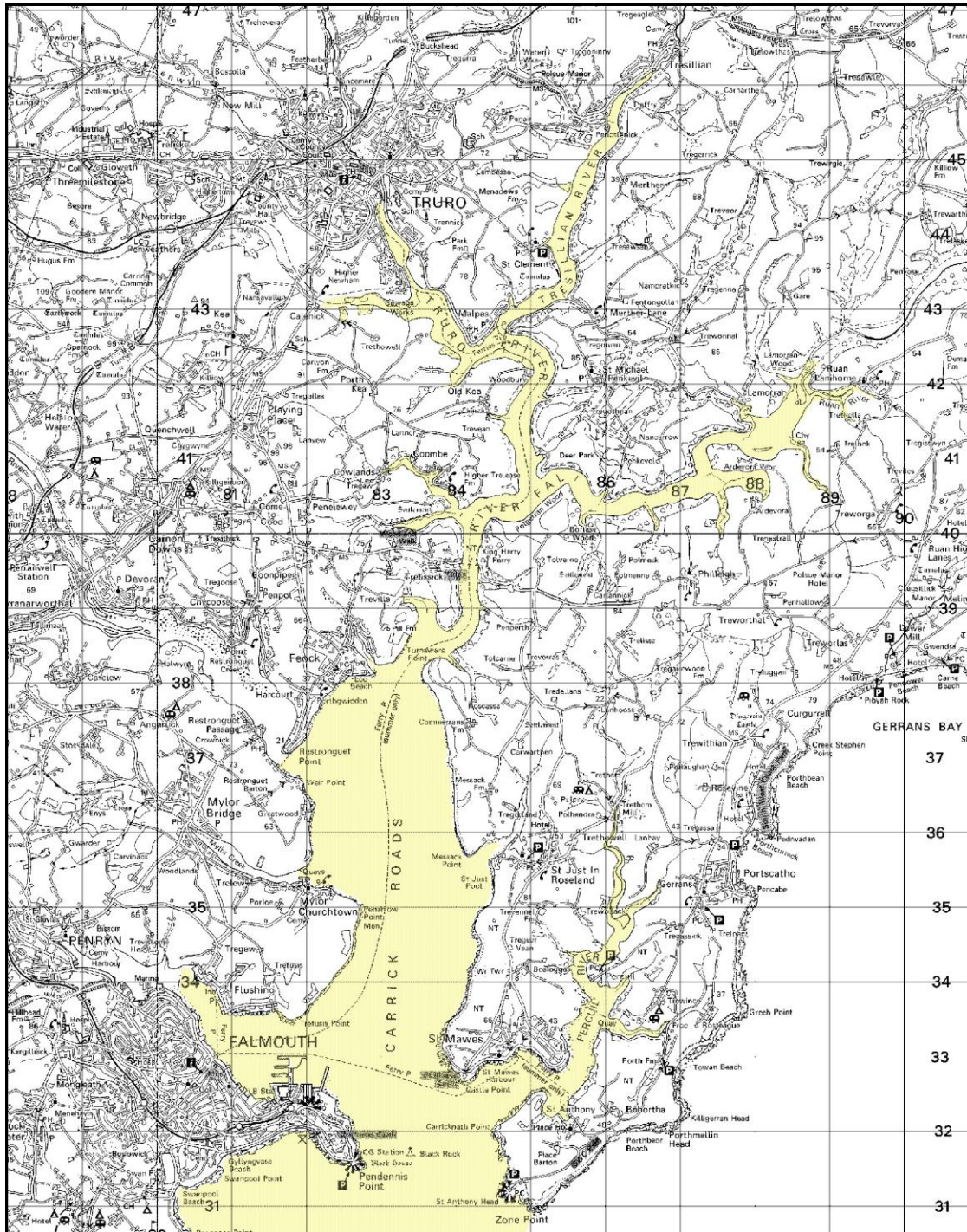


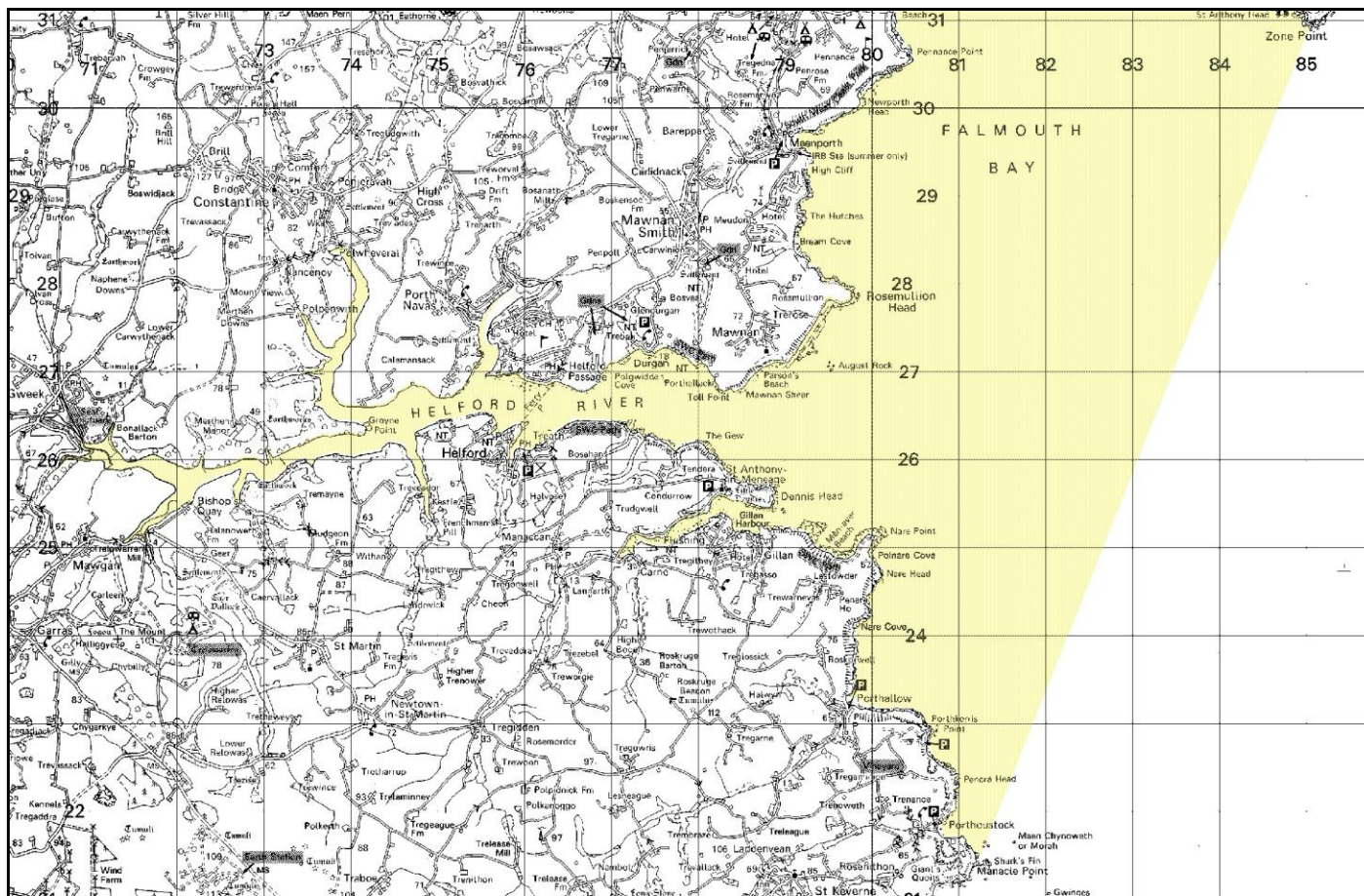
**Fal & Helford SAC boundary**  
**Fig. 1a: Fal Estuary**



This map is reproduced from the Ordnance Survey map by English Nature with the permission of OS on behalf of The Controller of HM's Stationary Office, © Crown copyright. All rights reserved. Unauthorised reproduction infringes Crown Copyright and may lead to prosecution or Civil proceedings. Licence no: 100017954.

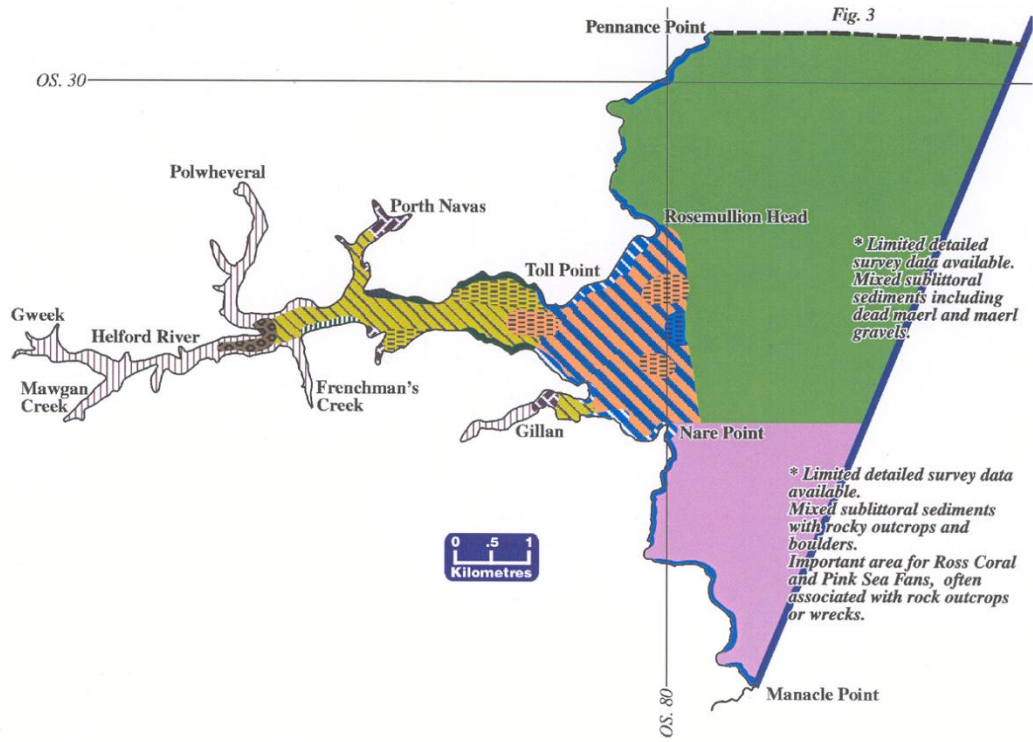


Fal & Helford SAC boundary  
Fig. 1b: Helford River and Falmouth Bay



This map is reproduced from the Ordnance Survey map by English Nature with the permission of OS on behalf of The Controller of HM's Stationary Office, © Crown copyright. All rights reserved. Unauthorised reproduction infringes Crown Copyright and may lead to prosecution or Civil proceedings. Licence no: 100017954.

**Fal & Helford European Marine Site: location of interest features**  
**Fig. 2: Helford River and Falmouth Bay**



**KEY (for figure's 2 and 3): based upon MNCR Phase I biotopes**

	European marine site boundary		Steep upper shore bedrock and sheltered lower shore substrata with fucoids
#	Exposed / moderately exposed bedrock shore with fucoids and barnacles		Sublittoral estuarine mud
	Littoral sandy mud		Sublittoral estuarine mud with kelp on available hard substrata
	Littoral soft mud		Sublittoral gravel/sand with maerl beds (live maerl)
	Lower shore or sublittoral sediment with Zostera marina beds (eelgrass)		Sublittoral maerl beds (live)
	Mixed sublittoral sediments with dead maerl and maerl gravels		Sublittoral marine mixed sediments with sponges and ascidans (sea squirts)
	Mixed substrata shores		Sublittoral moderately exposed rock with Laminaria hyperborea (kelp)
	Moderately exposed littoral rock		Sublittoral muddy sand
	Moderately exposed littoral rock with barnacles, fucoids and red algal turfs		Sublittoral muddy gravel
#	Saltmarsh		Sublittoral mud with bedrock outcrops
	Shallow sublittoral rock with kelps and sponges		Sublittoral rock with kelp beds and sublittoral sand and gravel
	Sheltered littoral rock		Sublittoral sediment with Zostera marina (eelgrass)
	Sheltered littoral rock with fucoids (seaweeds)		Tide-swept sheltered sublittoral rock with Laminaria saccharina (kelp)

# not MNCR biotope

**Fal & Helford European Marine Site: location of interest features**  
**Fig. 3: Fal Estuary**

