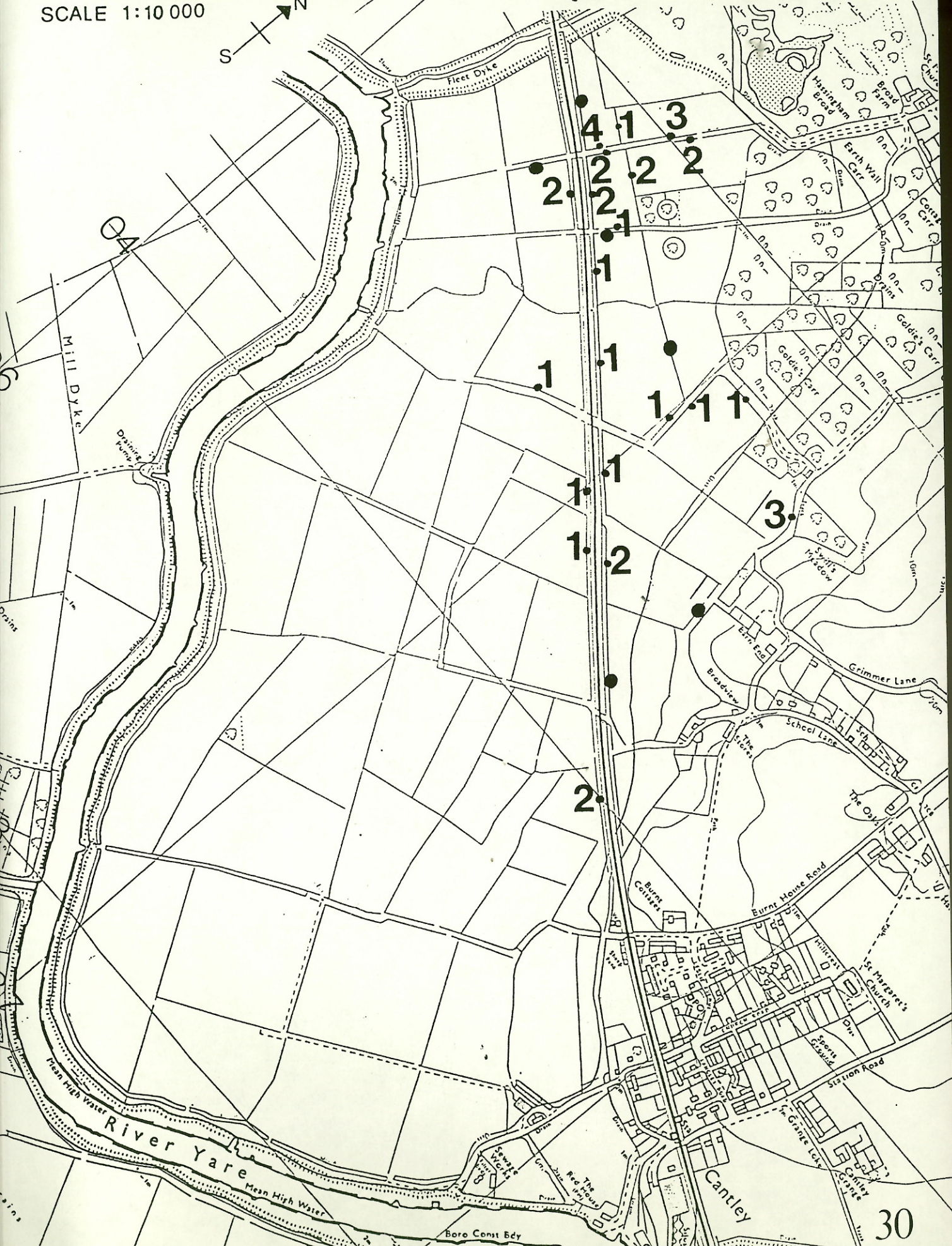
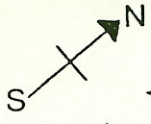


Map 11. The spatial distribution of *Hydrocharis morsus-ranae* in 1993. Species presence and abundance are indicated for all dykes across the grazing marsh.

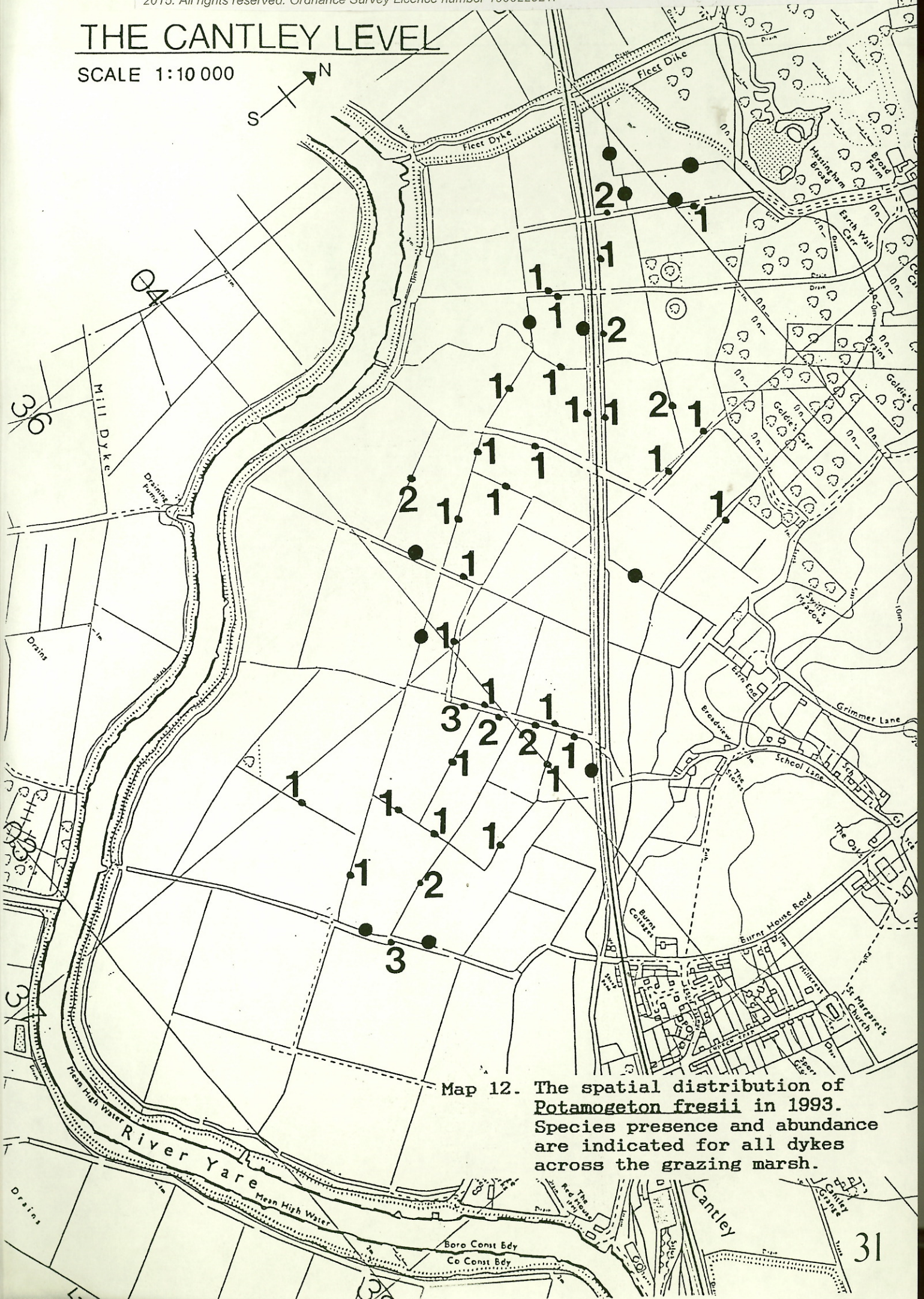
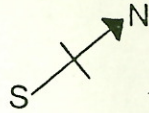
THE CANTLEY LEVEL

SCALE 1:10 000



THE CANTLEY LEVEL

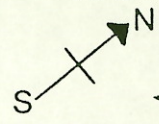
SCALE 1:10 000



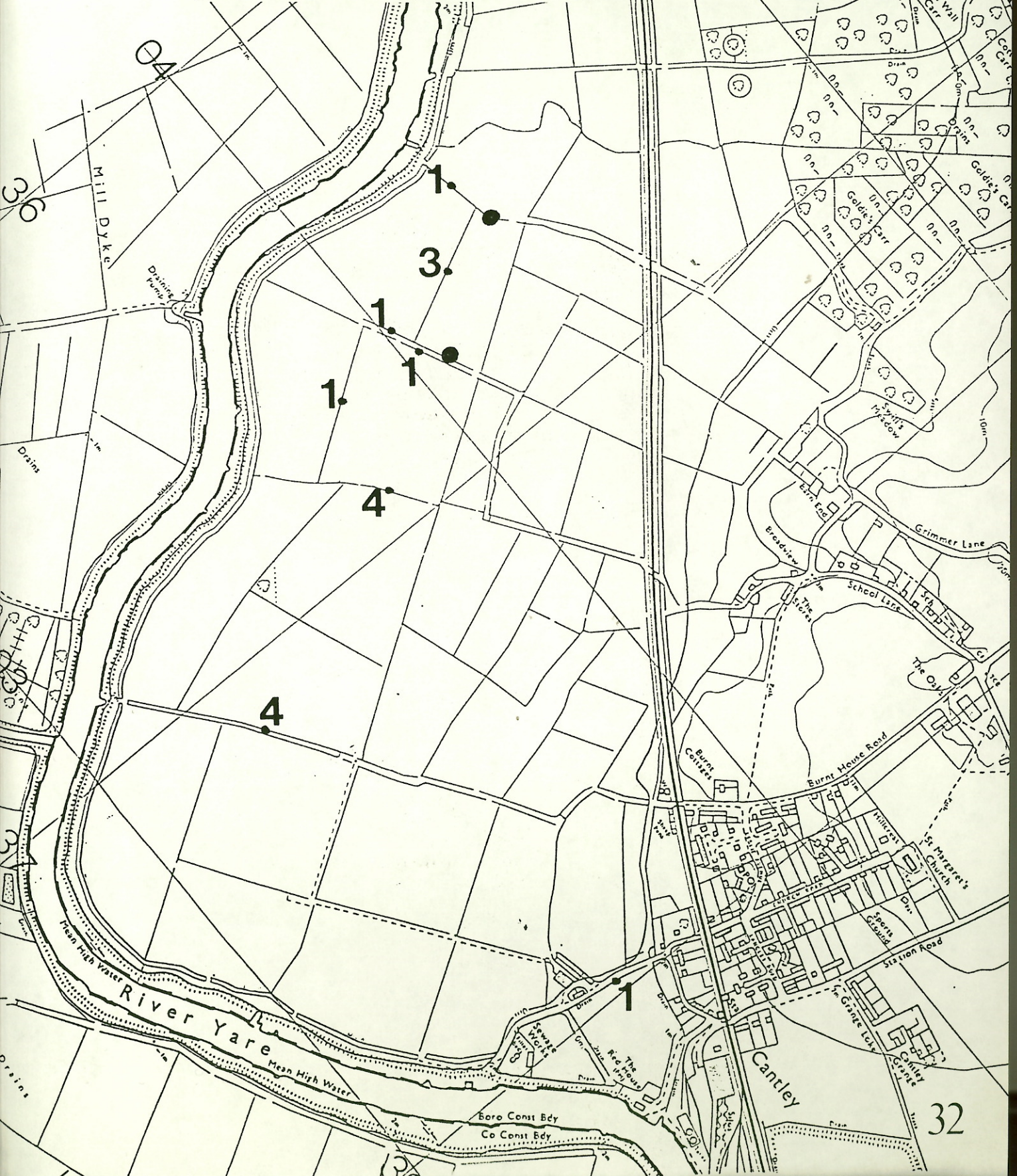
Map 12. The spatial distribution of *Potamogeton fresii* in 1993. Species presence and abundance are indicated for all dykes across the grazing marsh.

THE CANTLEY LEVEL

SCALE 1:10 000

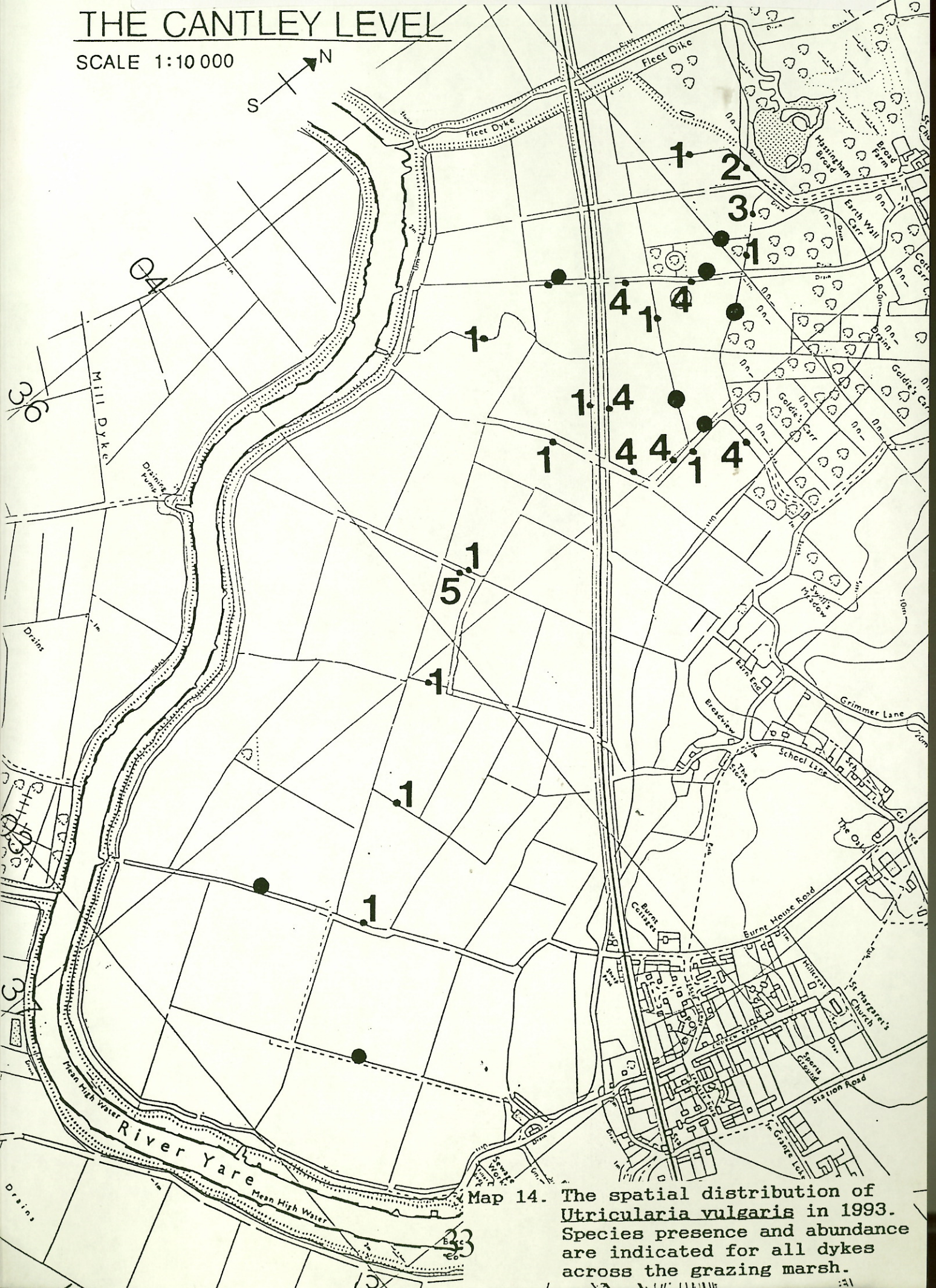
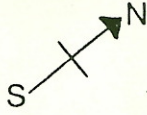


Map 13. The spatial distribution of *Potamogeton pectinatus* in 1993. Species presence and abundance are indicated for all dykes across the grazing marsh.



THE CANTLEY LEVEL

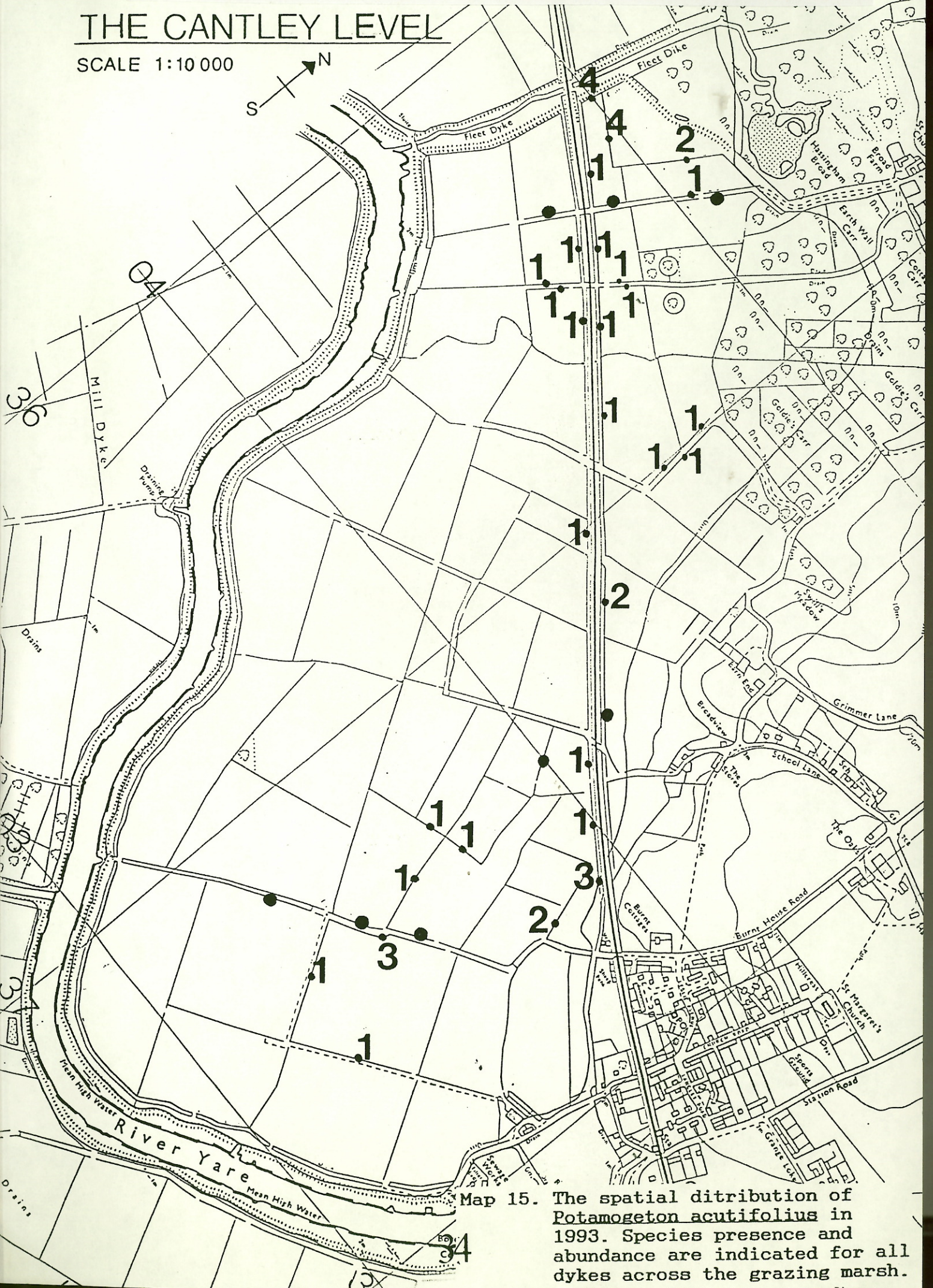
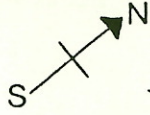
SCALE 1:10 000



Map 14. The spatial distribution of *Utricularia vulgaris* in 1993. Species presence and abundance are indicated for all dykes across the grazing marsh.

THE CANTLEY LEVEL

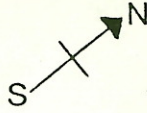
SCALE 1:10 000



Map 15. The spatial distribution of *Potamogeton acutifolius* in 1993. Species presence and abundance are indicated for all dykes across the grazing marsh.

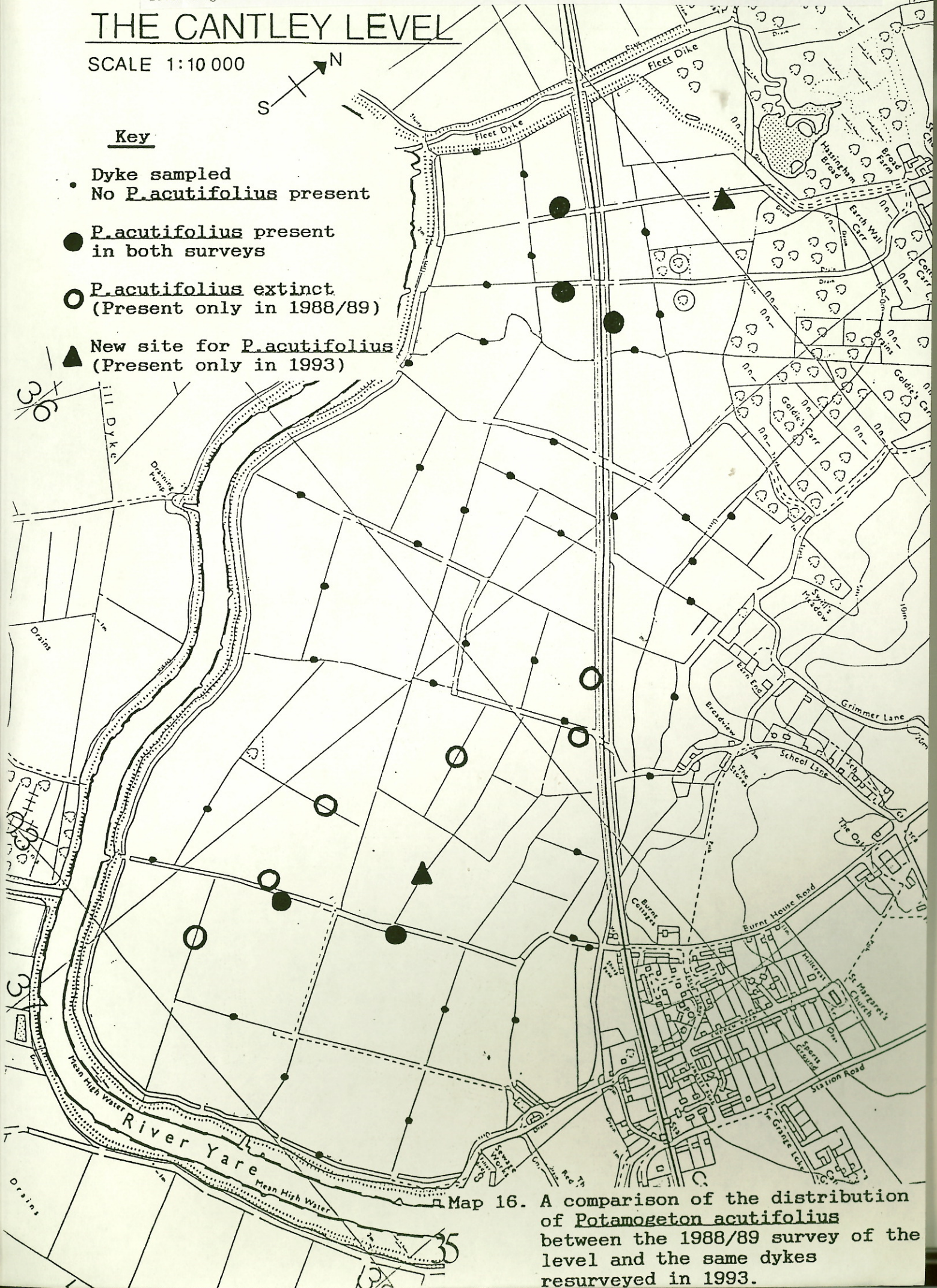
THE CANTLEY LEVEL

SCALE 1:10 000



Key

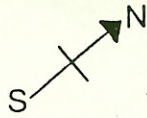
- Dyke sampled
- No *P. acutifolius* present
- *P. acutifolius* present in both surveys
- *P. acutifolius* extinct (Present only in 1988/89)
- ▲ New site for *P. acutifolius* (Present only in 1993)



Map 16. A comparison of the distribution of *Potamogeton acutifolius* between the 1988/89 survey of the level and the same dykes resurveyed in 1993.

THE CANTLEY LEVEL

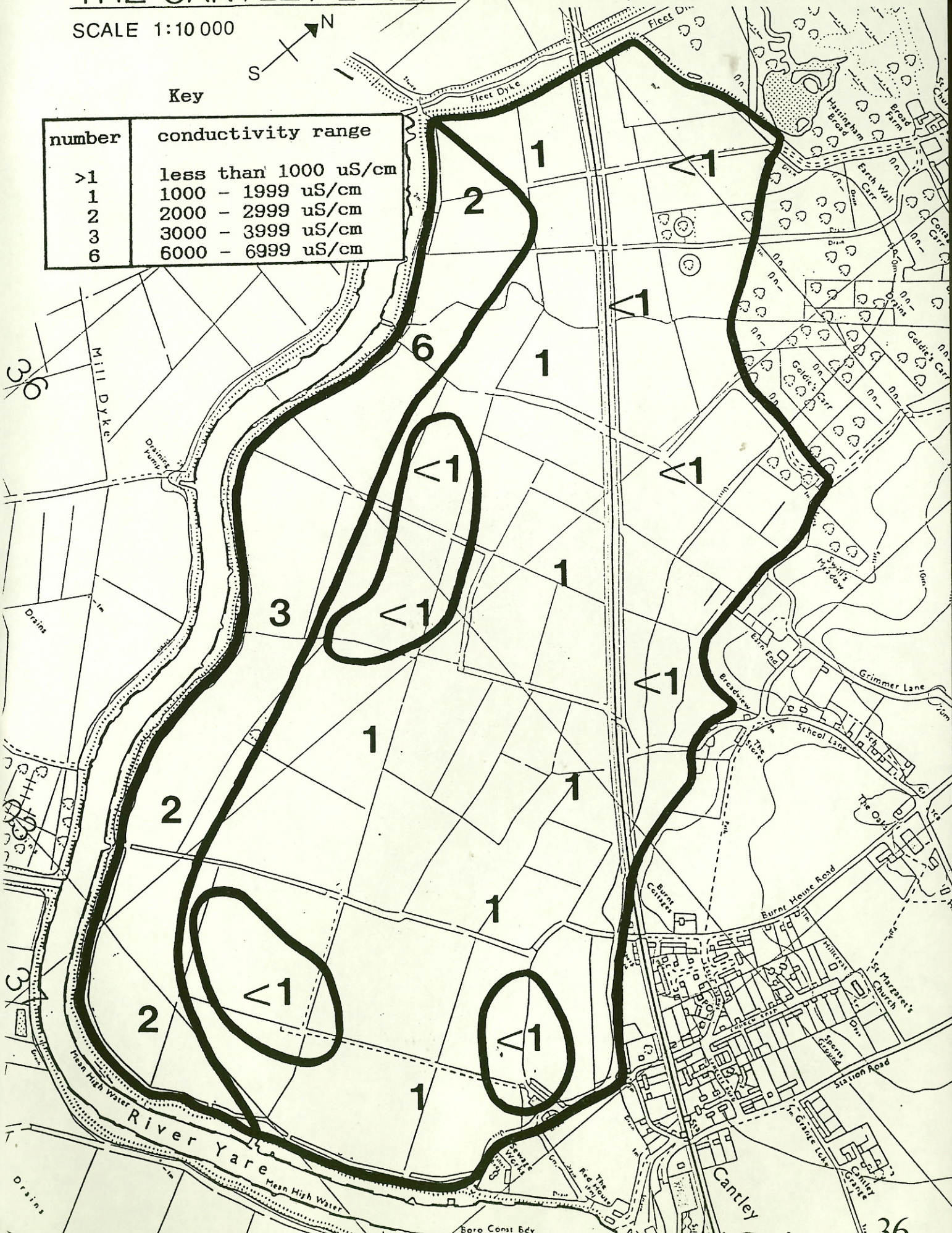
SCALE 1:10 000



Map 17. Conductivity isopleths at the Cantley level in 1989.
(Number of samples = 27)

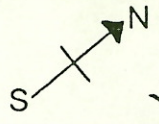
Key

number	conductivity range
>1	less than 1000 uS/cm
1	1000 - 1999 uS/cm
2	2000 - 2999 uS/cm
3	3000 - 3999 uS/cm
6	6000 - 6999 uS/cm



THE CANTLEY LEVEL

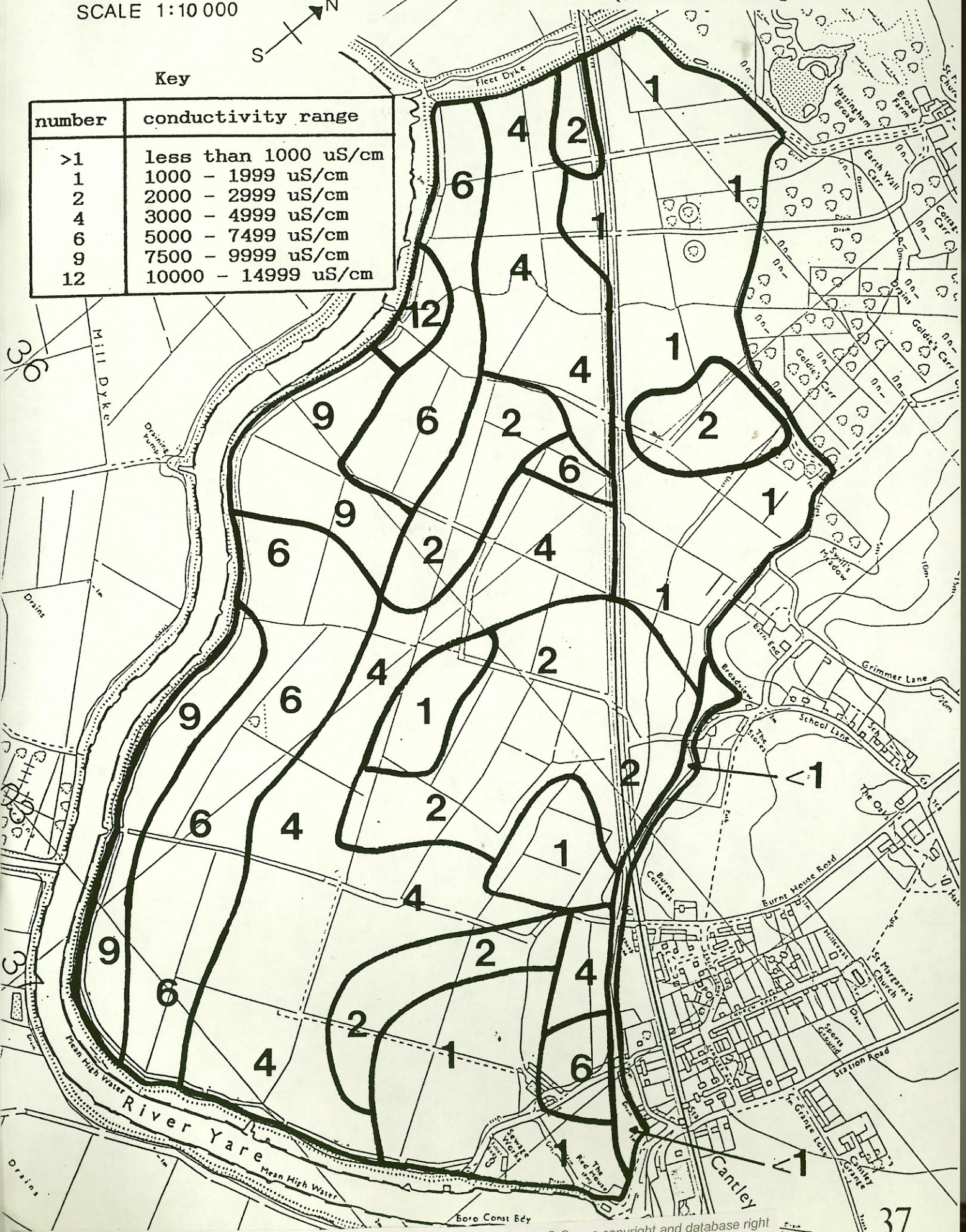
SCALE 1:10 000



Map 18. Conductivity isopleths at the Cantley level in 1993. (Number of samples = 190)

Key

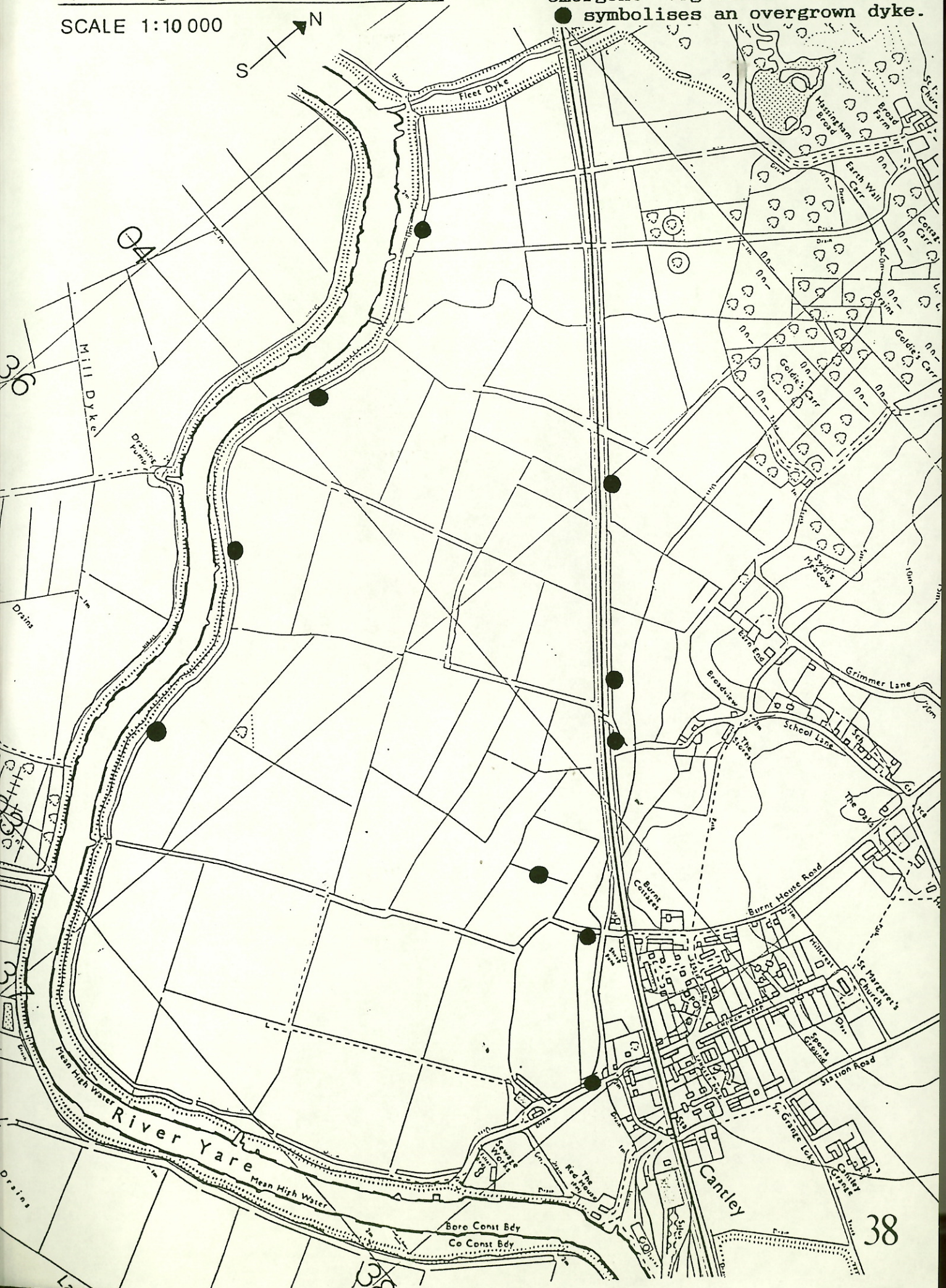
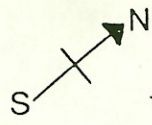
number	conductivity range
>1	less than 1000 uS/cm
1	1000 - 1999 uS/cm
2	2000 - 2999 uS/cm
4	3000 - 4999 uS/cm
6	5000 - 7499 uS/cm
9	7500 - 9999 uS/cm
12	10000 - 14999 uS/cm



THE CANTLEY LEVEL

Map 19. Location of dykes overgrown with emergent vegetation in 1993. ● symbolises an overgrown dyke.

SCALE 1:10 000



Map 20. Location of dykes containing significant quantities of ochre deposit in 1993.

THE CANTLEY LEVEL

SCALE 1:10 000

● symbolises an 'ochred' dyke.

