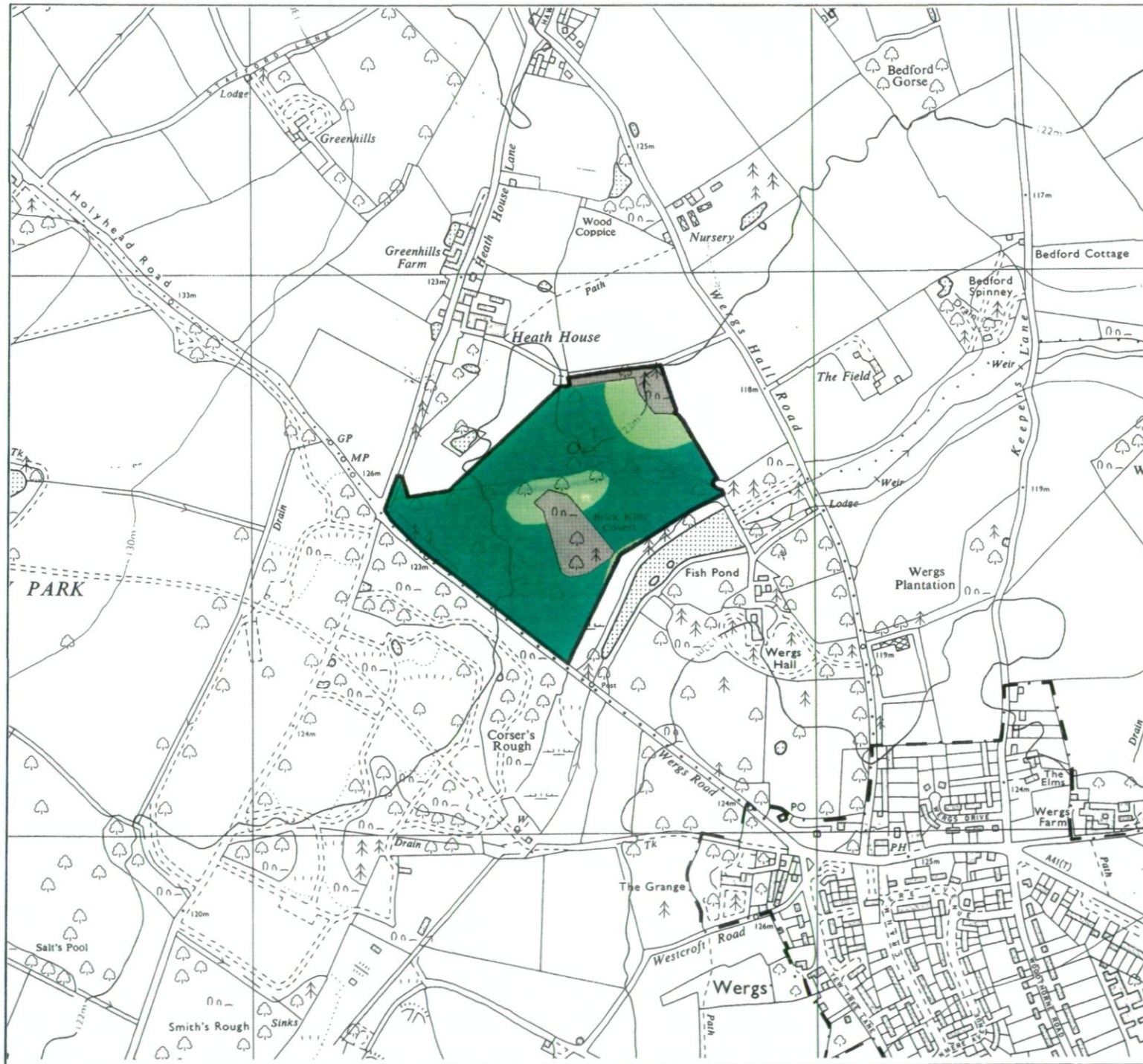


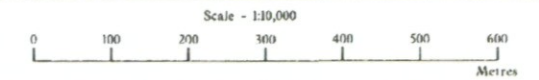
# Agricultural Land Classification

## Holyhead Road Wergs



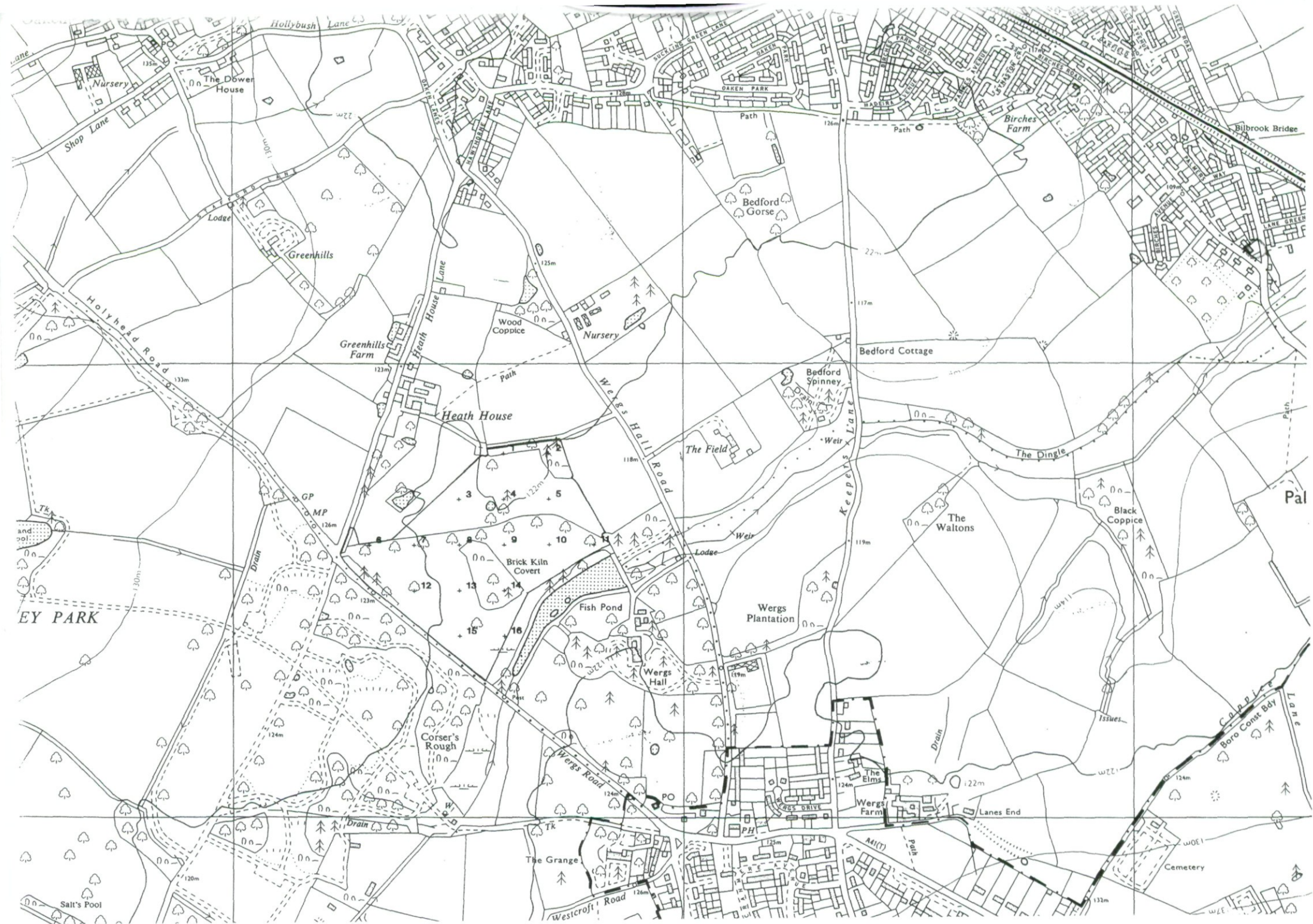
### Legend

Grade	Quality	Area (ha)
Grade 1	Excellent	Nil
Grade 2	Very Good	Nil
Grade 3a	Good	11.5
Grade 3b	Moderate	2.1
Grade 4	Poor	Nil
Grade 5	Very Poor	Nil
	Agricultural land not surveyed	Nil
	Other land	1.8
Boundary of survey area		
Total agricultural land area		13.6
Total survey area		15.4
* Not present within survey area		



Further details contained in MAFF (1988) Agricultural Land Classification of England and Wales - Revised guidelines and criteria for grading the quality of agricultural land. MAFF (publications), London SE99 7TP. The information is accurate at base map scale but any enlargement would be misleading. Reproduction in whole or in part by any means is prohibited without the prior permission of MAFF.

Surveyed and drawn by the Resource Planning Team, ADAS Statutory Unit, Wolverhampton. Based on the 1973 Ordnance Survey 1:10000 map with the permission of the Controller of Her Majesty's Stationery Office. Unauthorised reproduction infringes Crown copyright and may lead to prosecution or civil proceedings. MAFF Licence No: GD272361 Source map(s): SJ80SE Reference no: 104-96 © Crown Copyright Reserved 1997



WY PARK

Salt's Pool

Nursery

The Dower House

Greenhills

Greenhills Farm

Heath House

Nursery

Brick Kiln Covert

Wergs Hall

Wergs Plantation

The Elms

Wergs Farm

The Waltons

Black Coppice

Cemetery

Shop Lane

Lodge

Heath House Lane

Wood Coppice

Bedford Gorse

Bedford Cottage

Bedford Spinney

Billbrook Bridge

Birches Farm

Pal

The Grange

Lanes End

TK

GP

MP

Drain

Drain

Drain

Drain

Drain

Drain

Drain

Drain

Drain

Drain

Drain

Drain

Drain

Drain

Drain

Drain

Drain

Drain

Drain

Drain

TK

TK

TK

TK

TK

TK

TK

TK

TK

TK

TK

TK

TK

TK

TK

TK

TK

TK

TK

TK

TK

TK

TK

TK

TK

TK

TK

TK

TK

TK

TK

TK

TK

TK

TK

TK

TK

TK

TK

TK

TK

TK

TK

TK

TK

TK

TK

TK

TK

TK

TK

TK

TK

TK

TK

TK

TK

TK

TK

TK

TK

TK

TK

TK

TK

TK

TK

TK

TK

TK

TK

TK

TK

TK

TK

TK

TK

TK

TK

TK

TK

TK

TK

TK

TK

TK

TK

TK

TK

TK

TK

TK

TK

TK

TK

TK

TK

TK

TK

TK

TK

TK

TK

TK

TK

TK

TK

TK

TK

TK

TK

TK

TK

TK

TK

TK

TK

TK

TK

TK

TK

TK

TK

TK

TK

TK

TK

TK

TK

TK

TK

TK

TK

TK

TK

TK

TK

TK

TK

TK

TK

TK

TK

TK

TK

TK

TK

TK

TK

TK

TK

TK

TK

TK

TK

TK

TK

TK

TK

TK

TK

TK

TK

TK

TK

TK

TK

TK

TK

TK

TK

TK

TK

TK

TK

TK

TK

TK

TK

TK

TK

TK

TK

TK

TK

TK

TK

TK

TK

TK

TK

TK

TK

TK

TK

TK

TK

TK

TK

TK

TK

TK

TK

TK

TK

TK

TK

TK

TK

TK

TK

TK

TK

TK

TK

TK

TK

TK

TK

TK

TK

TK

TK

TK

TK

TK

TK

TK

TK

TK

TK

TK

TK

TK

TK

TK

TK

TK

TK

TK

TK

TK

TK

TK

TK

TK

TK

TK

TK

TK

TK

TK

TK

TK

TK

TK

TK

TK

TK

TK

TK

TK

TK

TK

TK

TK

TK

TK

TK

TK

TK

TK

TK

TK

TK

TK

TK

TK

TK

TK

TK

TK

TK

TK

TK

TK

TK

TK

TK

TK

TK

TK

TK

TK

TK

TK

TK

TK

TK

TK

TK

TK

TK

TK

TK

TK

TK