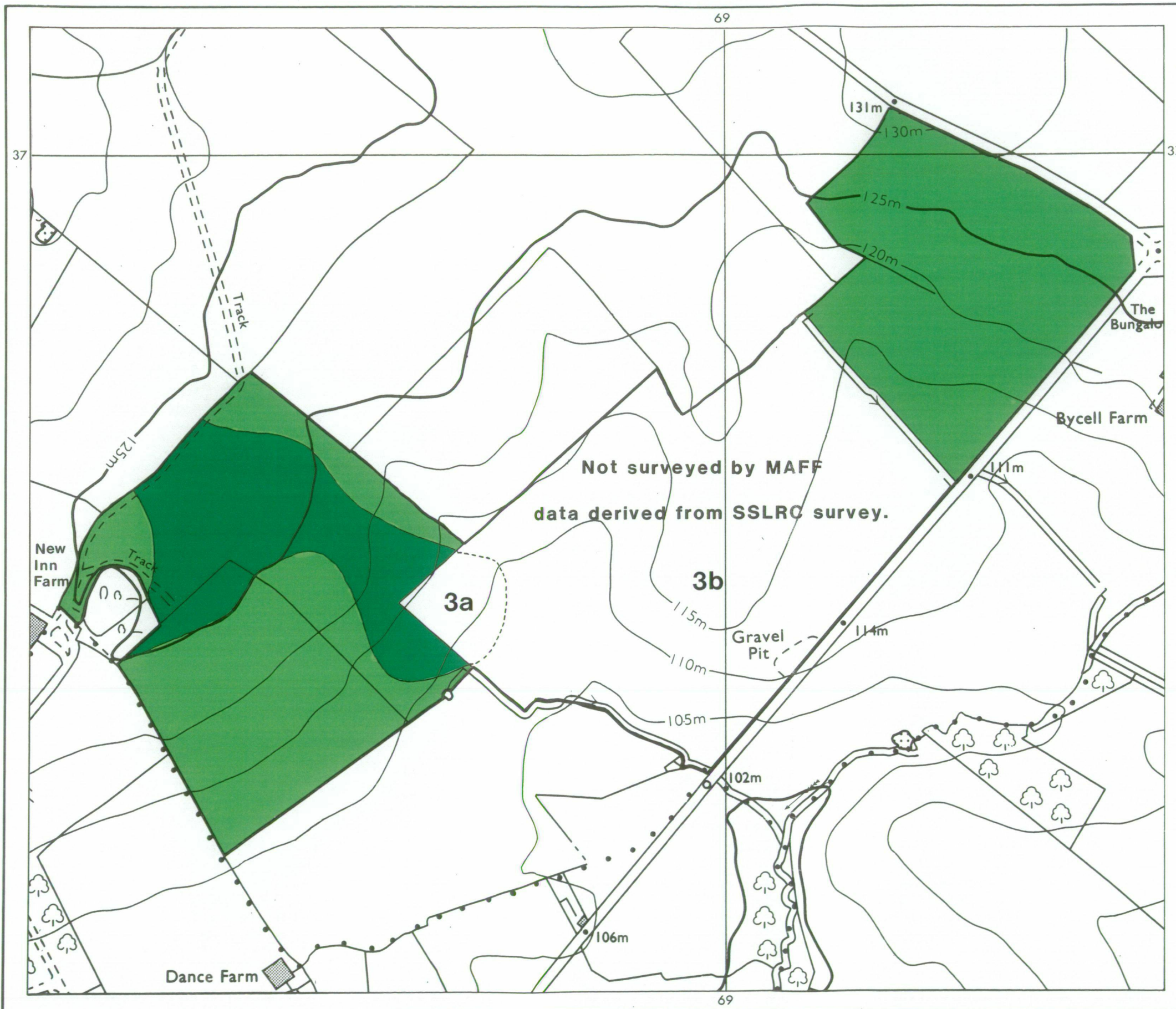


# New Inn and Bycell Farms, STOWE, Bucks

## Agricultural Land Classification



### AGRICULTURAL LAND

| Grade    | Quality     | Area      | % of Total |
|----------|-------------|-----------|------------|
| Grade 1  | Not present | excellent | ha %       |
| Grade 2  | Not present | very good | ha %       |
| Grade 3a | good        | 6.85 ha   | 16%        |
| Grade 3b | moderate    | 36.30 ha  | 84%        |
| Grade 4  | Not present | poor      | ha %       |
| Grade 5  | Not present | very poor | ha %       |

Total area of agricultural land 43.15 ha

Agricultural buildings  Not present

Woodland  Not present

Not surveyed

### NON-AGRICULTURAL LAND

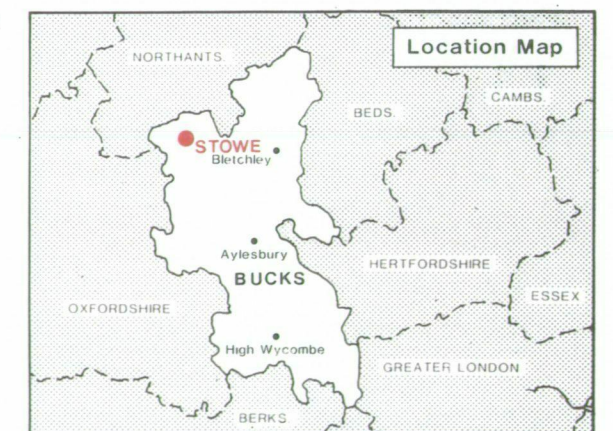
Land predominantly in urban use  Not present

Land in non-agricultural use  Not present

Total area of site 43.15 ha

For further information consult "Agricultural Land Classification of England and Wales (Revised guidelines and criteria for grading the quality of agricultural land)", M.A.F.F., 1988.

SOURCE MAPS  
SP 63 NE



Surveyed by the Resource Planning Group 6/89  
Map compiled and produced by the Cartographic Unit,  
Farm and Countryside Service, South East Region, Reading.  
Reference no. 0301/004/89

Ordnance Survey information reproduced with the sanction of  
the Controller, H.M.S.O.

Reproduction of this map in whole or in part is prohibited without  
the prior permission of M.A.F.F.

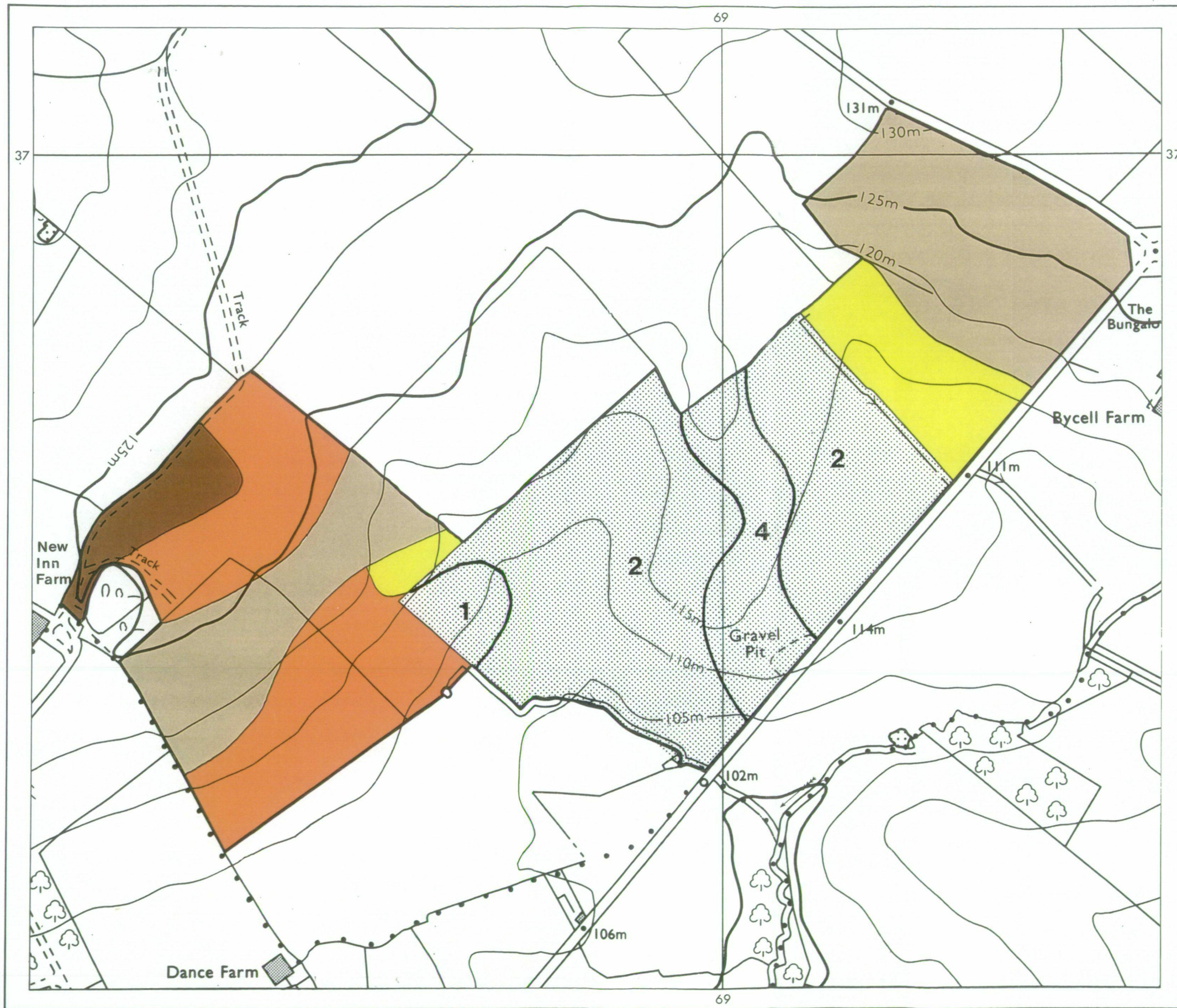
This map is accurate only at the scale shown.






© Crown Copyright reserved 1989.



# New Inn and Bycell Farms, STOWE, Bucks

## Soil Types



-  Type 1
-  Type 2
-  Type 3
-  Type 4
-  Not surveyed by MAFF  
data derived from SSLRC survey

Surveyed by the Resource Planning Group 6/89  
Map compiled and produced by the Cartographic Unit,  
Farm and Countryside Service, South East Region, Reading.

Reference no. 0301/004/89

SOURCE MAPS  
SP 63 NE



Ordnance Survey information reproduced with the sanction of  
the Controller, H.M.S.O.

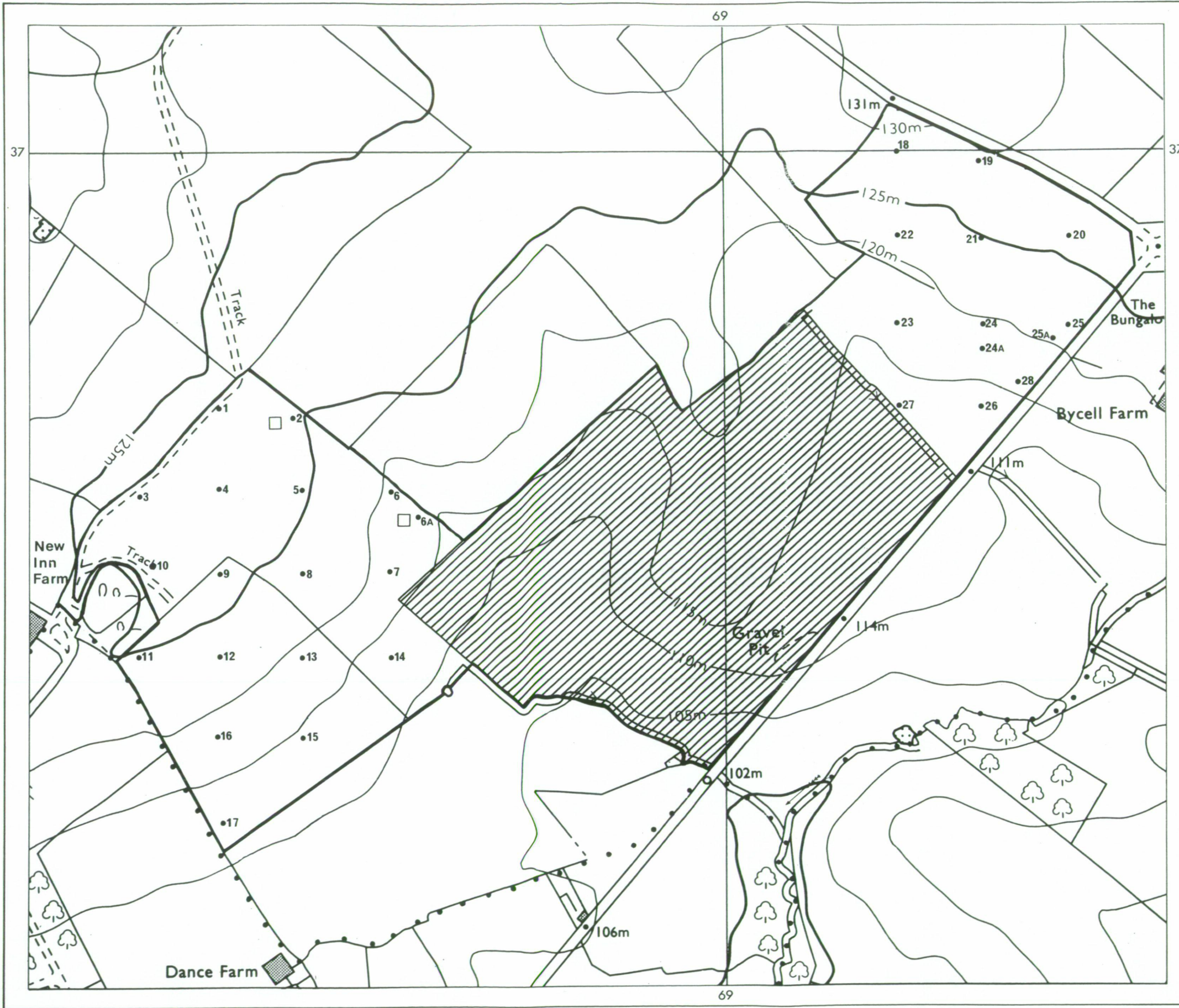
Reproduction of this map in whole or in part is prohibited without  
the prior permission of M.A.F.F.

This map is accurate only at the scale shown.



# New Inn and Bycell Farms, STOWE, Bucks

## Location of Auger Borings

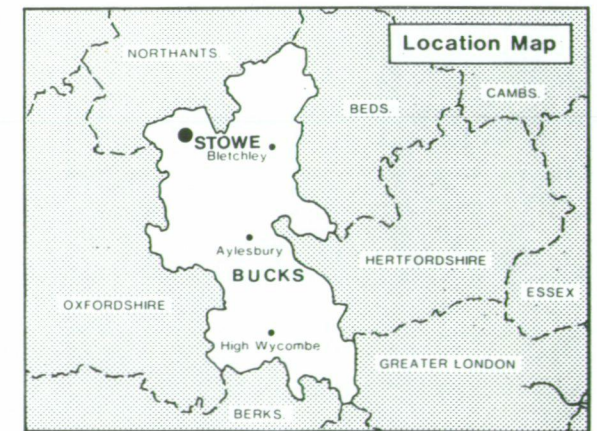


- 5 Auger boring
- Profile pit
- ▨ Not surveyed

Surveyed by the Resource Planning Group 6/89  
 Map compiled and produced by the Cartographic Unit,  
 Farm and Countryside Service, South East Region, Reading.

Reference no. 0301/004/89

SOURCE MAPS  
 SP 63 NE



Ordnance Survey information reproduced with the sanction of  
 the Controller, H.M.S.O.

Reproduction of this map in whole or in part is prohibited without  
 the prior permission of M.A.F.F.

This map is accurate only at the scale shown.

