

Morecambe Bay Limestones & Wetlands Nature Improvement Area





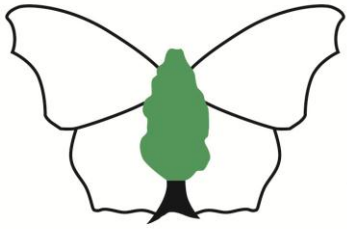
- a step change for nature

– a step change for nature



Morecambe Bay

Local Nature Partnership



**Butterfly
Conservation**

Saving butterflies, moths and our environment



**National
Trust**

**Arnside &
Silverdale** 
Area of Outstanding Natural Beauty



Forestry Commission

**LANCASTER
CITY COUNCIL**

Promoting City, Coast & Countryside



**Environment
Agency**

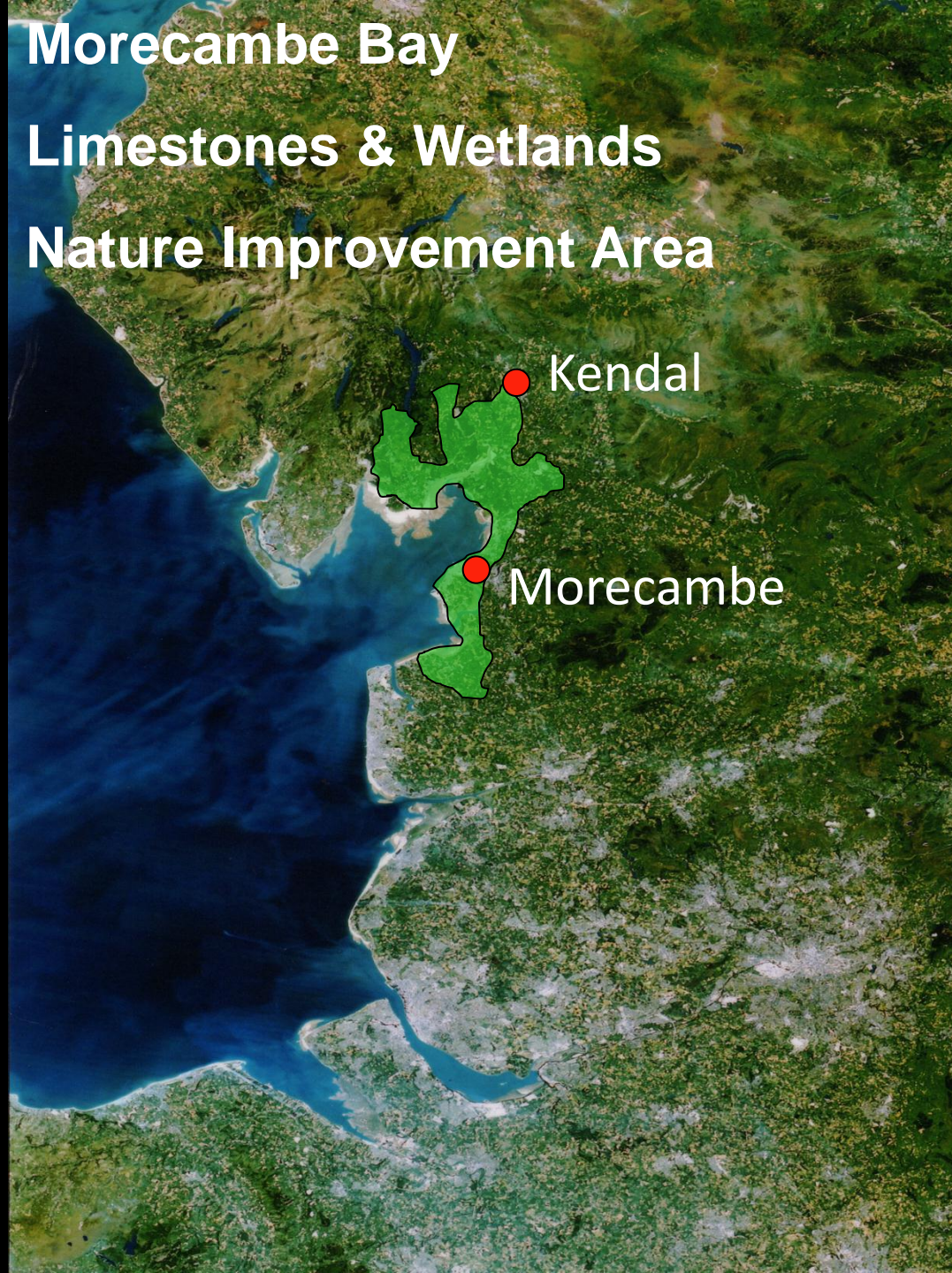




Morecambe Bay

Limestones & Wetlands

Nature Improvement Area



Kendal

Morecambe



joint local action to deliver multiple benefits



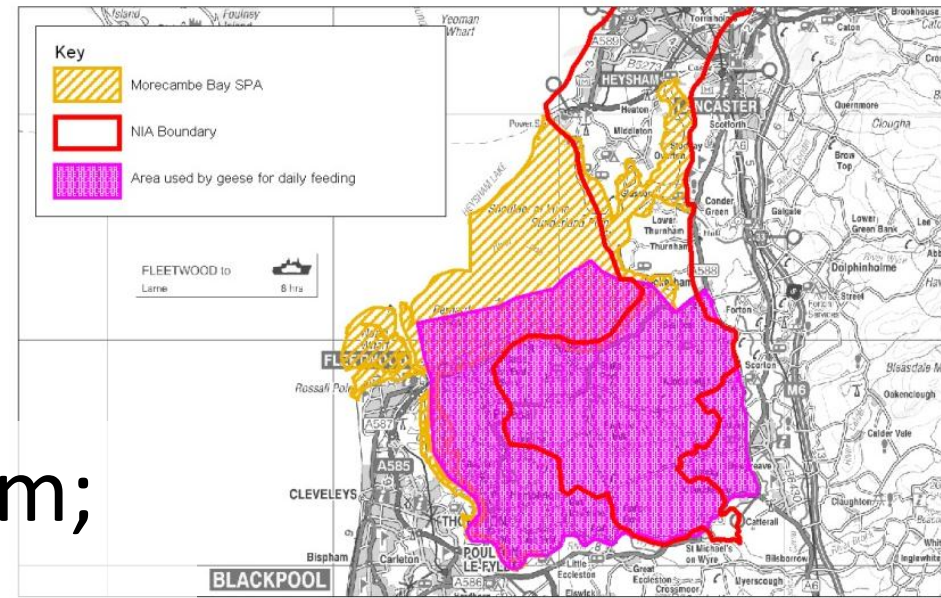
ecological network: enhance; restore; connect





low carbon economy:
wildlife tourism; woodfuel



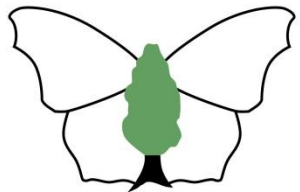


influence planning system;
share lessons learnt





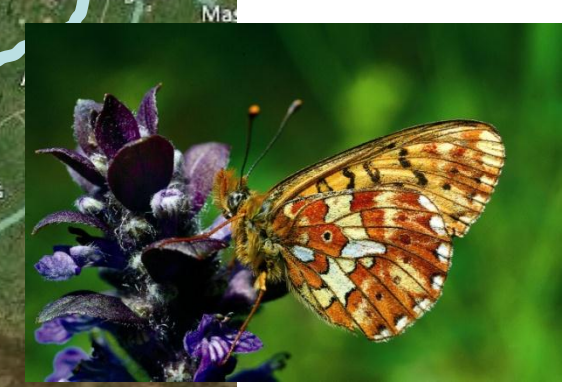
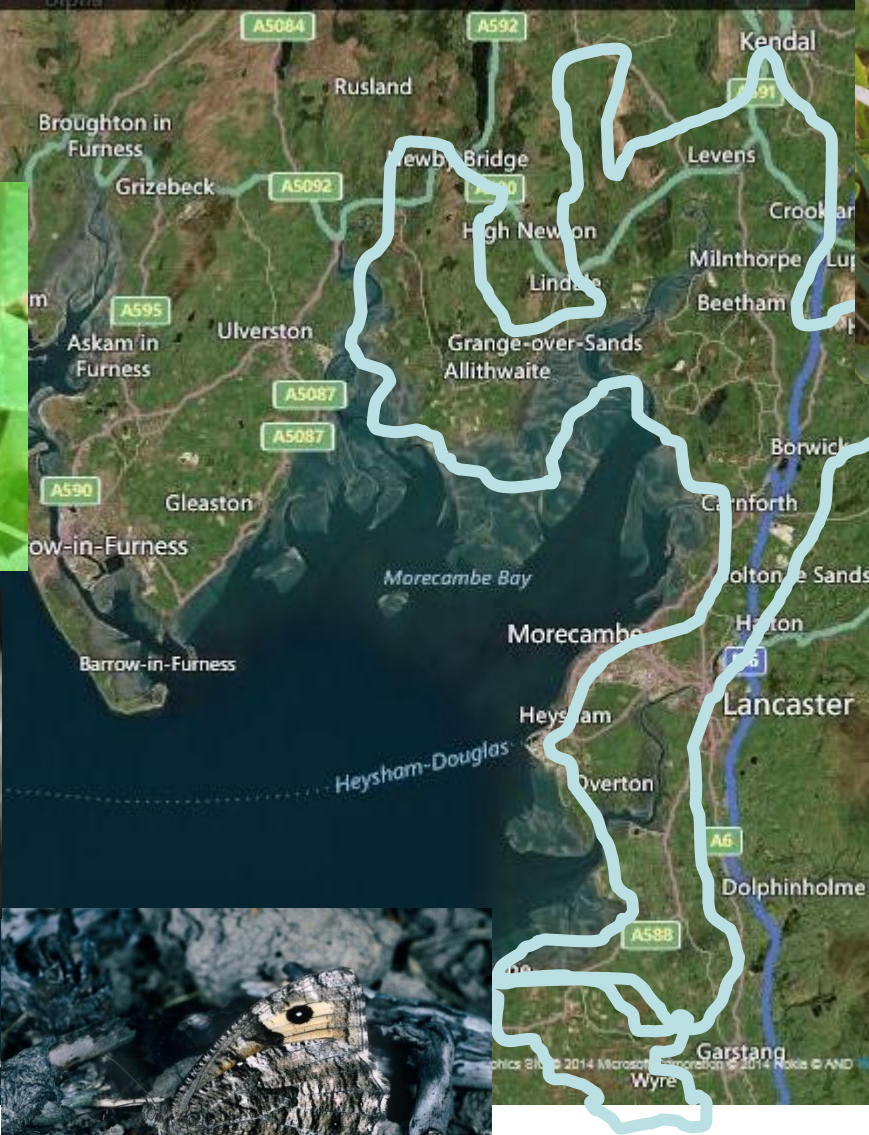
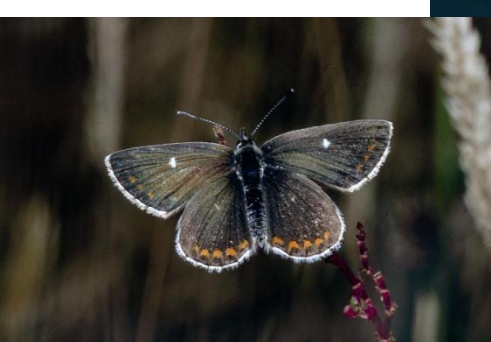
connect people with nature



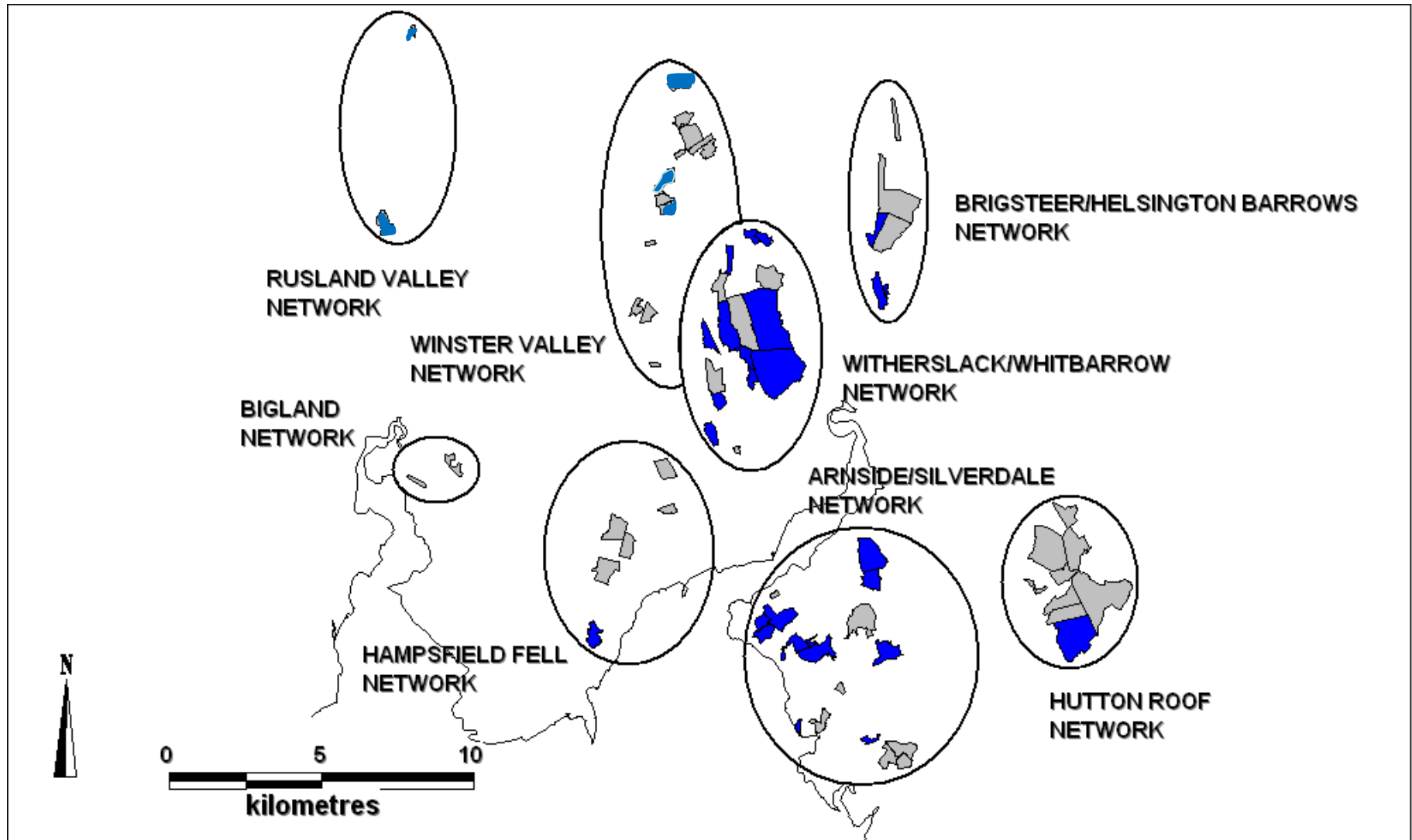
**Butterfly
Conservation**

Martin Wain, NIA Woodland Advisor

Morecambe Bay



Extant (blue) and extinct (grey) High Brown Fritillary sites in the Morecambe Bay Limestones landscape in 2010



Overgrown Coppice



Secondary Woodland



Overgrown and shady rides



Open, but encroached and isolated limestone pavement





High Brown Fritillary and Pearl Bordered Fritillary
breeding habitat –
violets in bracken and woodland clearings





Open sunny rides



Open sunny glades





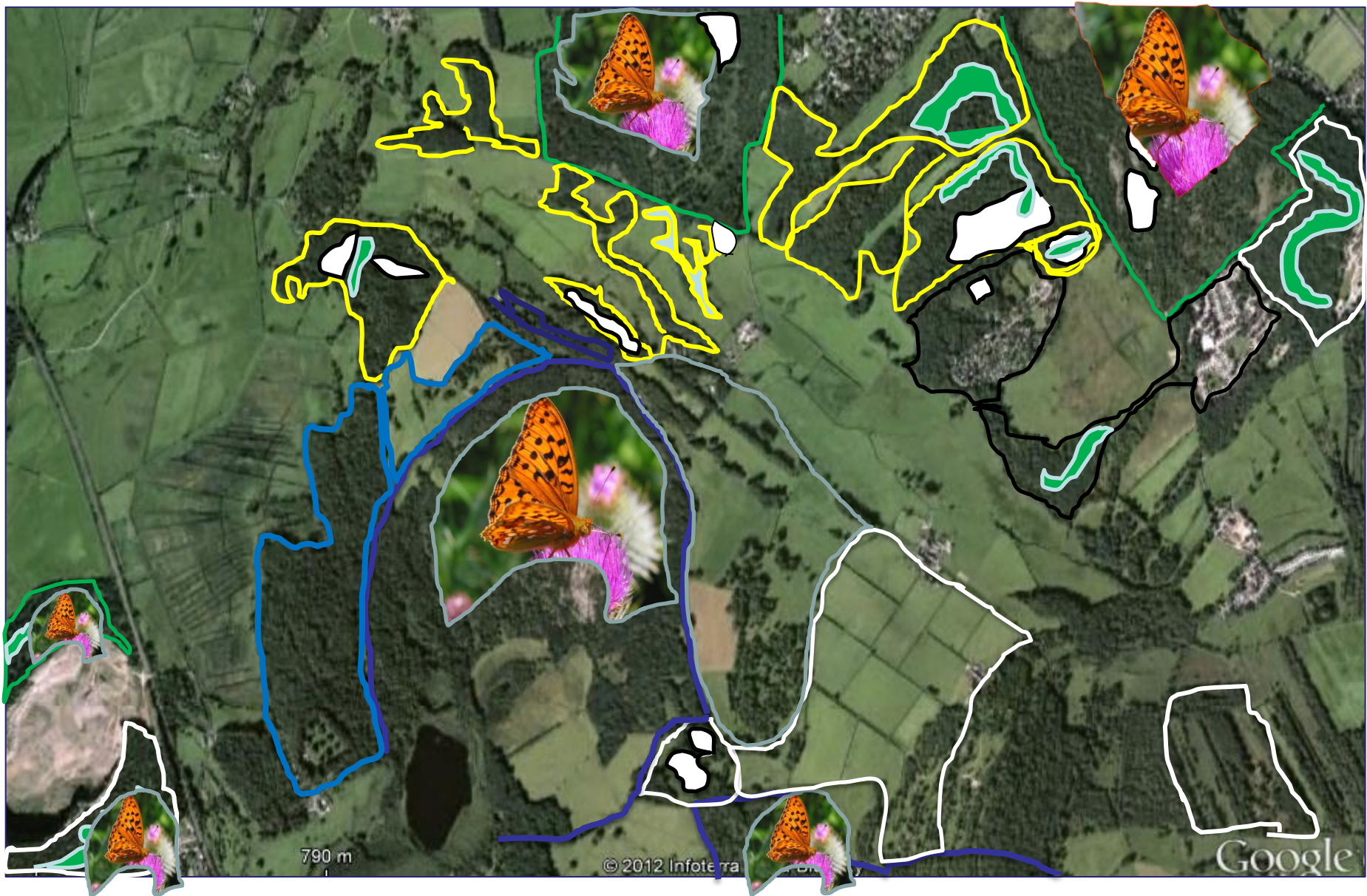
Limestone
Grassland/Woodland
Mosaic











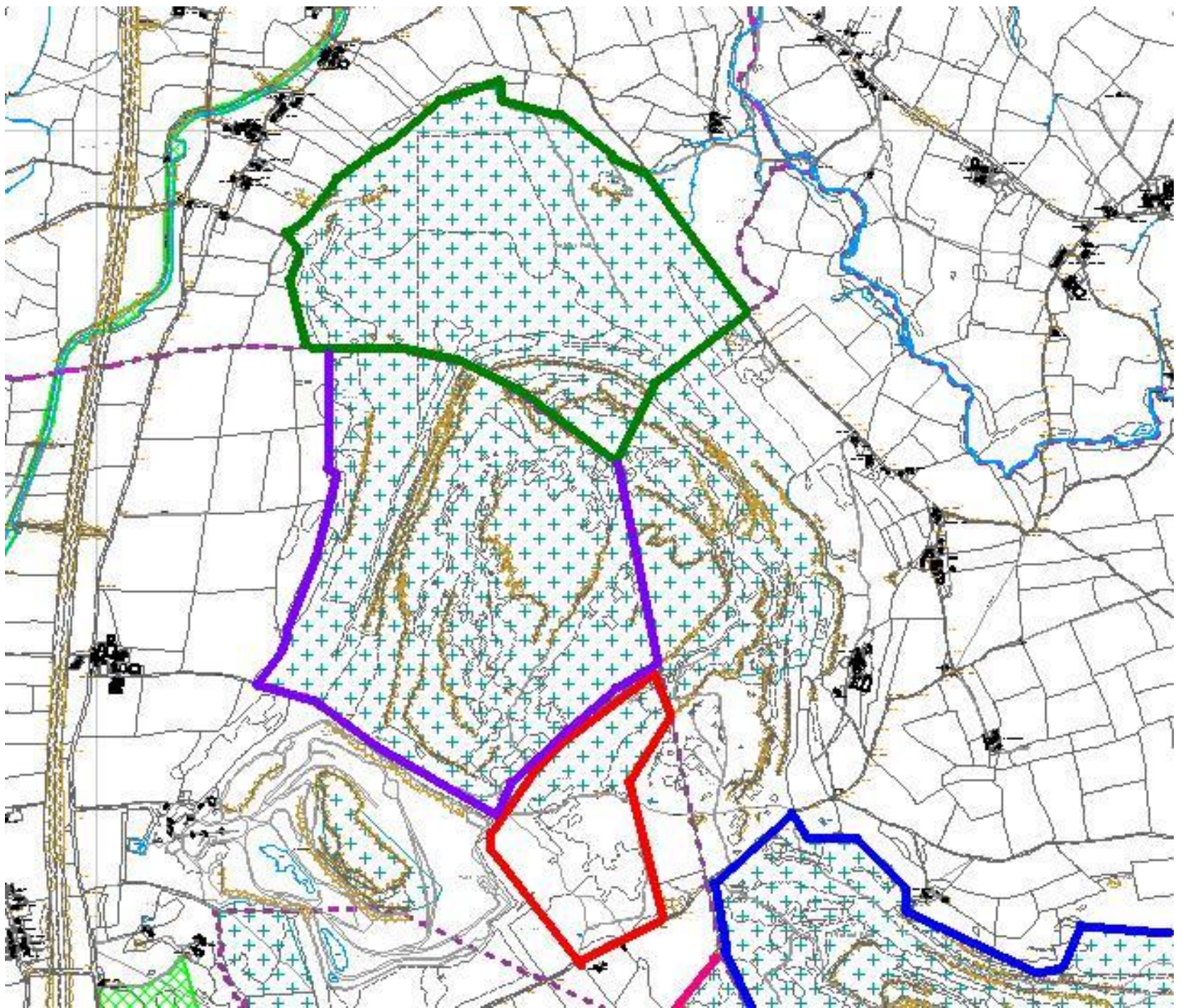
NIA - more, bigger, better, more connected e.g.
Arnside and Silverdale Area of Outstanding Natural Beauty

Working with wood fuel, community, business and wildlife:

- *52 local contractors
- *Advice to 85 owners, working with 32
- *Developed 13 community woodland groups
- *£370,000 worth of Woodland Improvement Grant
- *292 ha woodlands in eWIG schemes
- *14 SSSIs receiving management, (8 unfavourable)
- *4 new sites for High Brown Fritillary
- *Monitoring of sites planned 2015

Holme Stinted Pasture





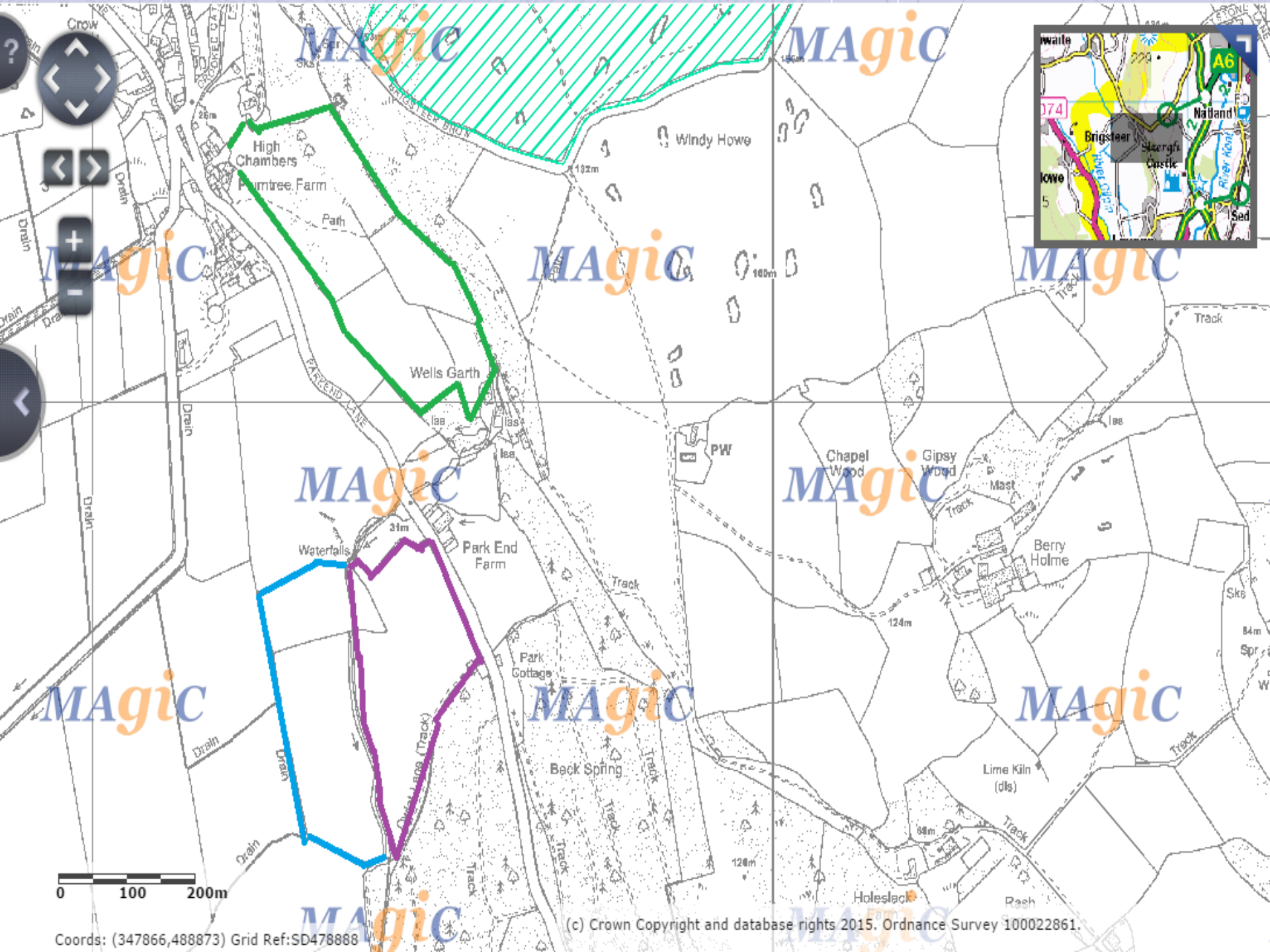












MAGIC

MAGIC

MAGIC

MAGIC

MAGIC

MAGIC

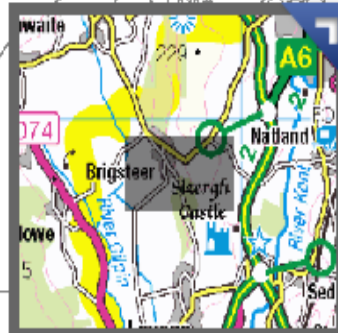
MAGIC

MAGIC

MAGIC

MAGIC

MAGIC



Coords: (347866,488873) Grid Ref:SD478888

(c) Crown Copyright and database rights 2015. Ordnance Survey 100022861.

Park End Farm











Seed harvesting and collecting





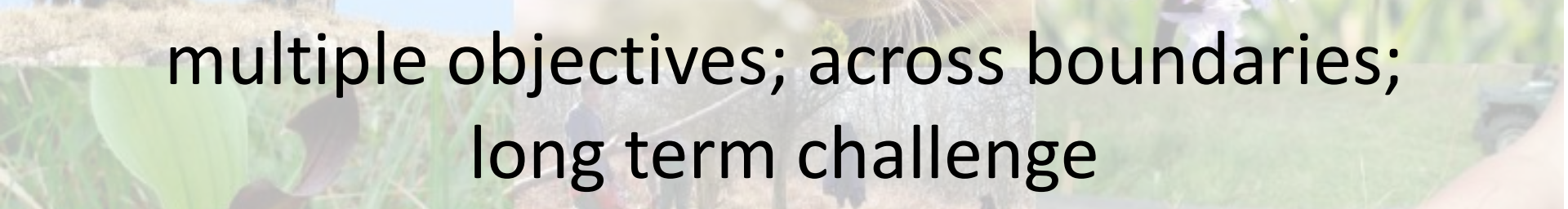








multiple objectives; across boundaries;
long term challenge



Thank you!



Photos by:

David Morris, Jon Sparks, Dave Hall, Adam Donaldson, Bart Donato,
Simon Webb, Tony Riden, Arnside & Silverdale AONB,
Cumbria Wildlife Trust, rspb-images.com, Butterfly Conservation, Rob
Grange

Thank you!

