

# Improvement Programme for England's Natura 2000 Sites (IPENS)

Planning for the future

Helen Rae  
Programme Manager



# Areas I will cover

- What is IPENS?
- What will it achieve?
- What is the scope?
- Why are we doing it?
- What is involved?
- How will it work?



# IPENS LIFE+ Project

- £2.8M programme, 50% funded by EU LIFE+
- Partnership with Environment Agency
- Strategic approach to achieving favourable condition on Natura 2000 sites
- What, how, where and when 'we' will target efforts on Natura 2000 sites and surrounding areas



# What will it achieve?

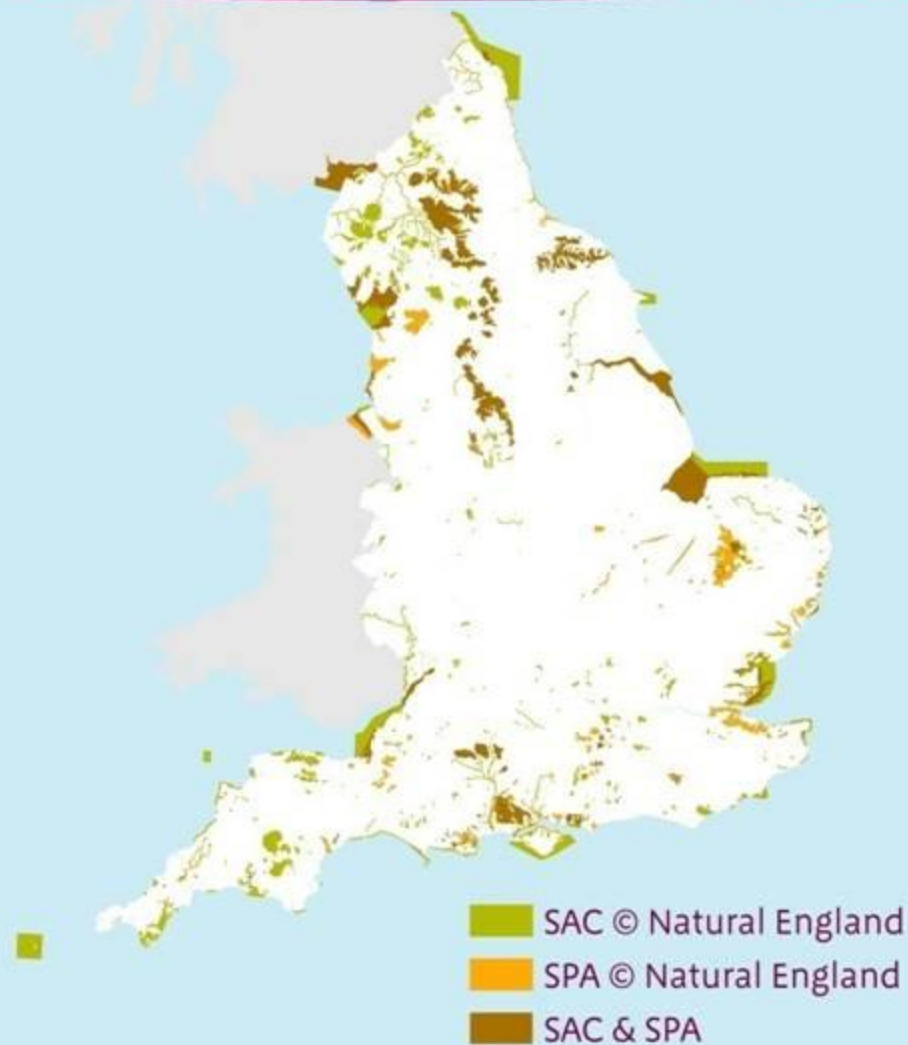
- Overall **framework** for taking forward Natura 2000 management which partners are committed to delivering
- **Action Plan** for each Natura 2000 site which will identify:
  - **risks and issues** impacting on and/or threatening the condition of the site
  - **mechanisms** to address them
  - how much it will **cost** and where the money could come from
  - key **stakeholders** who need to take action
- Find new solutions where no suitable mechanisms currently exist



# England's Natura 2000 Sites



- 337 SPAs and SACs
- Covering 2,077,276 ha



# Natura 2000 site condition

## Key habitats in poor condition:

- Upland and lowland dwarf shrub and heath types
- Upland and lowland bogs
- Standing open water and canals
- Lowland fens, marsh and swamp
- Neutral grassland
- Supra-littoral and littoral rock sediments
- Eelgrass beds

## Top issues:

- Pollution
- Water levels
- Over and under grazing
- Invasive species
- Commercial fisheries



# How does IPENS relate to other key work areas?

Builds on existing work to address issues on whole suite of Natura 2000 Sites

ENSIS Threat data exercise  
Population of ISA Outcomes  
Conservation Objectives Review  
SPA Review  
Air Pollution  
Nature Improvement Areas  
Article 17 Habitats Directive Reporting  
SSSI Detailed Notification Review  
Water Framework Directive  
Periodic Review 14  
Biodiversity 2020  
Article 12 Birds Directive Reporting  
Marine Priorities Programme  
Uplands Evidence Review



# What is involved?

Gather <b>evidence</b> on risks and issues affecting Natura 2000 Sites	Dec 2012 – June 2013
Review and develop <b>mechanisms</b> to address issues and funding options	March 2013 – Feb 2014
Produce site and theme <b>action plans</b>	Oct 2013 – Dec 2014
Integrate mechanisms into <b>River Basin Management Plans</b>	April 2014 – Dec 2014
Compile overall <b>Implementation Plan</b>	April 2014 – March 2015





# Evidence

- Evidence Inventory
- Evidence Gaps Log
- Evidence gathering



# What will the plans look like?

## Theme Action Plans

- Description of issue
- Mechanisms/funding options

## Site Action Plans

- Site description
- Current management
- Description of risks / threats to condition
- Mechanisms / funding options



# What are the benefits?

- Better understanding of issues affecting Natura 2000 sites and mechanisms to address them
- Easier access to info on mechanisms and funding options
- Provides evidence to influence EU funding
- Reduced infraction risk
- More efficient delivery of favourable condition on Natura 2000 sites



# How will it work?

- Share information on sites condition and threats
- Work together to find and implement solutions



# Monitoring site condition – an example

Unit Number	Unit Name	Unit area (Ha)	Current condition	Status	Main habitat
Unit 32	Gloria Esker Fan (National Nature Reserve)	22.31	Favourable	Live	Earth Heritage
Unit 33	Eastern Meadows (National Nature Reserve)	33.11	Unfavourable Recovering	Live	Neutral Grassland - Lowland
Unit 34	Eastern Meadows (Estate)	3.33	Unfavourable Recovering	Live	Neutral Grassland - Lowland
Unit 35	Thistlefields Pastures	6.1	Unfavourable Recovering	Live	Neutral Grassland - Lowland
Unit 36	Western Pastures	10.18	Unfavourable Recovering	Live	Neutral Grassland - Lowland
Unit 37	Aqualate Mere	66.42	Unfavourable No Change	Live	Standing Open Water And Canals
Unit 38	Fringing Reedbed	9.14	Unfavourable Recovering	Live	Fen, Marsh And Swamp - Lowland
Unit 39	River Meese	1.32	Favourable	Live	Standing Open Water And Canals
Unit 40	Wood Brook Silt Trap	1.05	Favourable	Live	Standing Open Water And Canals
Unit 41	Coley Brook Silt Trap	0.5	Favourable	Live	Standing Open Water And Canals
Unit 42	Decoy Wood	4.81	Unfavourable Recovering	Live	Broadleaved, Mixed And Yew Woodland - Lowland
Unit 43	Mere Eye Covert	4.26	Favourable	Live	Broadleaved, Mixed And Yew Woodland - Lowland
Unit 44	Clark's Plantation	1.53	Favourable	Live	Broadleaved, Mixed And Yew Woodland - Lowland
Unit 45	River Meese Carr Woodland (South)	1.03	Favourable	Live	Broadleaved, Mixed And Yew Woodland - Lowland
Unit 46	River Meese Carr Woodland (North)	1.08	Favourable	Live	Broadleaved, Mixed And Yew Woodland - Lowland

## Favourable Condition Tables (FCT)

- Set the monitoring attributes for each SSSI.
- For each attribute – a threshold is defined.
- When all mandatory thresholds met = Favourable condition.

Conservation objectives and definitions of favourable condition for designated features of interest

Department for Environment, Food and Rural Affairs

Conservation Objectives and definitions of favourable condition for designated features of interest

Name of SSSI of Special Scientific Interest (SSSI):

Name of designated monitoring site:

Name of the landowner (if any):

Name of the site (if any):

Date of site visit:

Name of the person who completed the form:

Date of completion:

Signature:

Unit 47	Coley Brook Meadow	1.32	Unfavourable Recovering	Live	Neutral Grassland - Lowland
Unit 48	Mere Meadow	2.8	Unfavourable Recovering	Live	Neutral Grassland - Lowland
Unit 49	Fenny Area	5.74	Unfavourable Recovering	Live	Neutral Grassland - Lowland
Unit 50	Western Fen Meadows	23.7	Unfavourable Recovering	Live	Neutral Grassland - Lowland
Unit 51	The Spectacles	0.76	Unfavourable Recovering	Live	Standing Open Water And Canals
Unit 52	Spectacle Buffer Land (National Nature Reserve)	9.51	Favourable	Live	Standing Open Water And Canals
Unit 53	Spectacle Buffer Land (Estate)	7.26	Favourable	Live	Standing Open Water And Canals
Unit 54	Boathouse Wood	3.62	Favourable	Live	Broadleaved, Mixed And Yew Woodland - Lowland
Unit 55	The Gorse	2.37	Unfavourable Recovering	Live	Broadleaved, Mixed And Yew Woodland - Lowland
Unit 56	Fitchild's Covert Heronry	5.77	Unfavourable Recovering	Live	Broadleaved, Mixed And Yew Woodland - Lowland
Unit 57	Gloria Esker Fan (Near Car Park)	0.25	Favourable	Live	Earth Heritage
Unit 58	Gloria Esker Fan (New Guild)	12.06	Favourable	Live	Earth Heritage

Google earth

Eye alt 1.29 km

# Complex range of activity to secure favourable condition

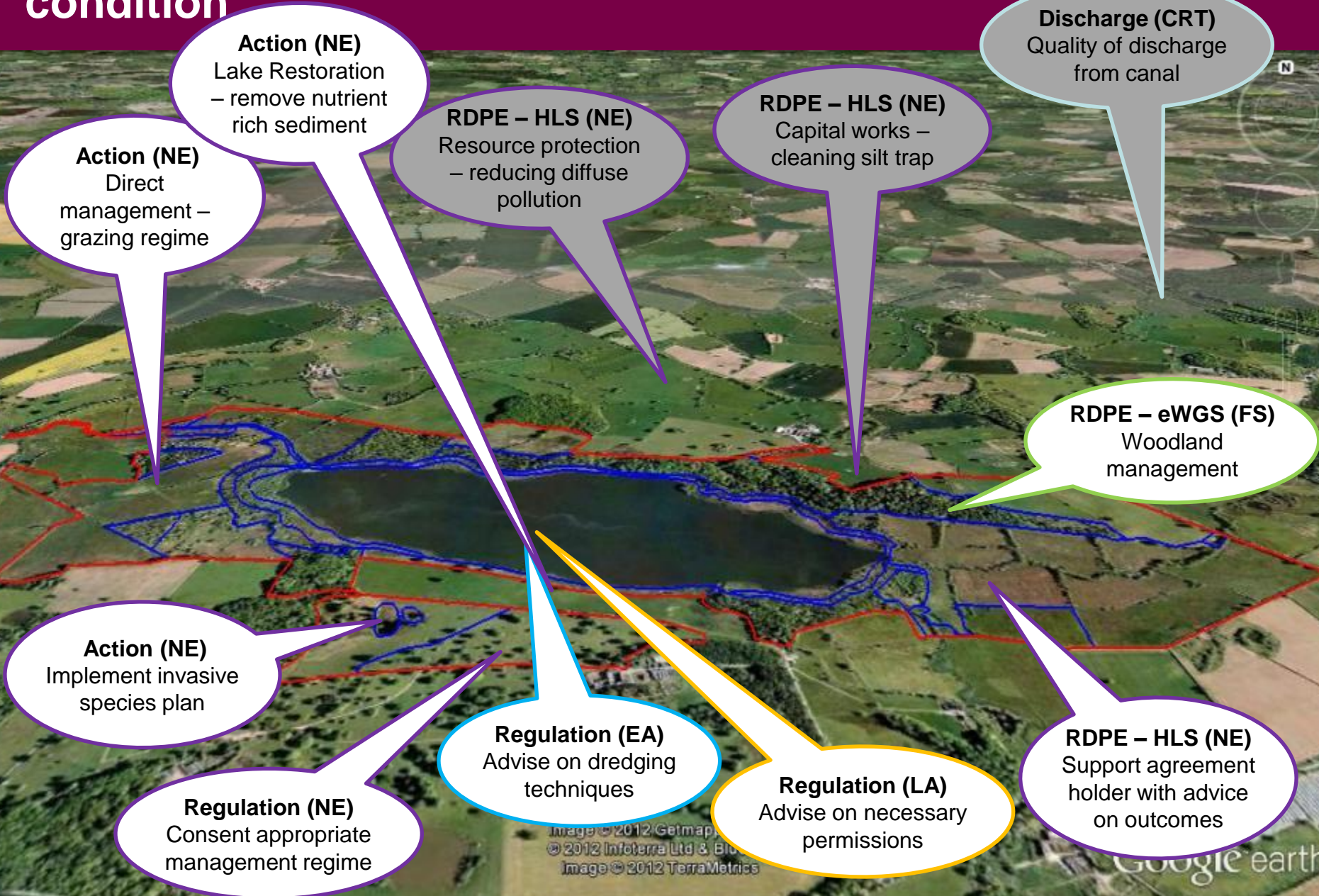
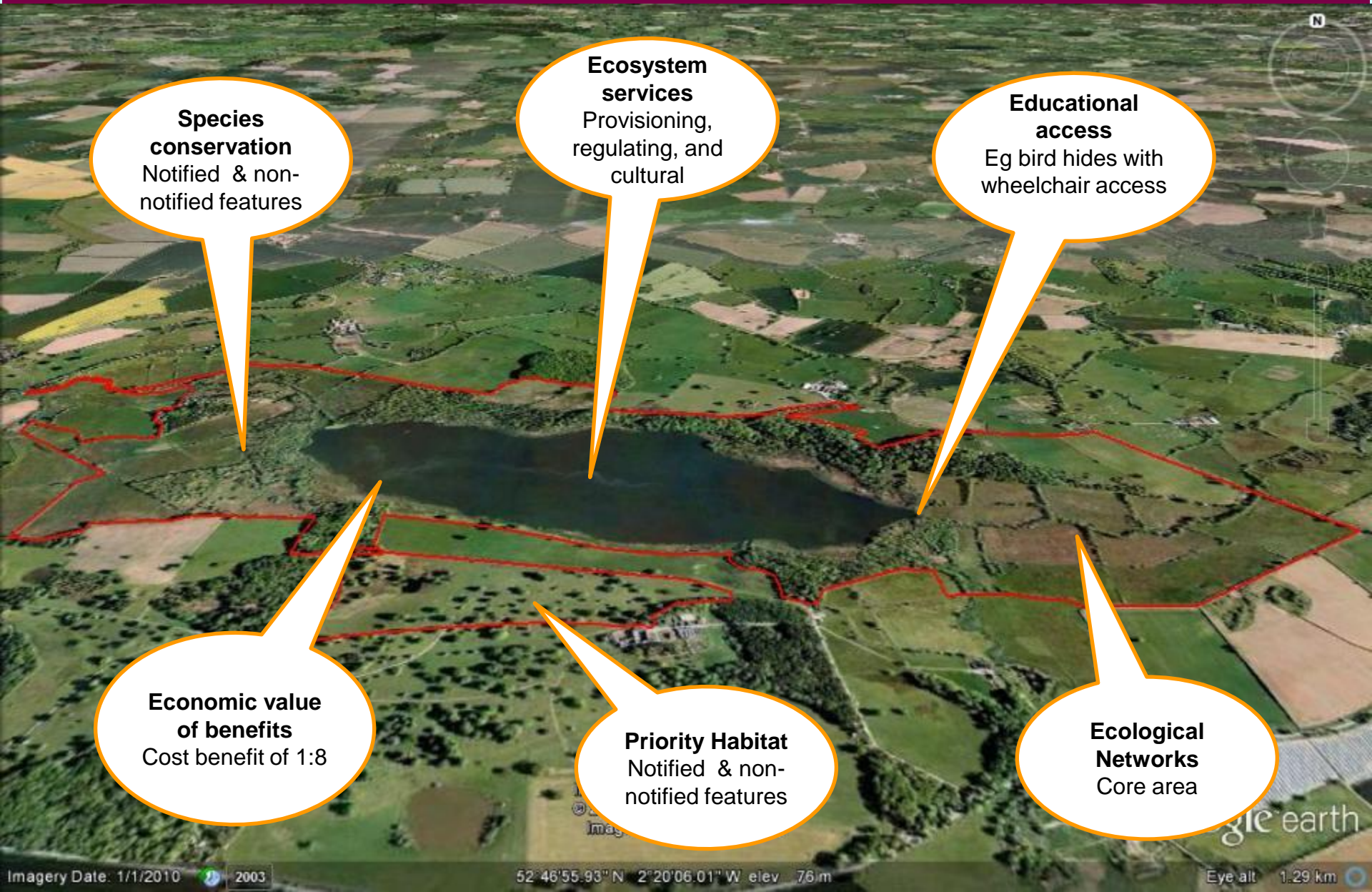


Image © 2012 Getmap  
© 2012 Infoterra Ltd & B  
Image © 2012 TerraMetrics

Google earth

# Natura 2000 sites – developing wider context and added value



**Species conservation**  
Notified & non-notified features

**Ecosystem services**  
Provisioning, regulating, and cultural

**Educational access**  
Eg bird hides with wheelchair access

**Economic value of benefits**  
Cost benefit of 1:8

**Priority Habitat**  
Notified & non-notified features

**Ecological Networks**  
Core area

# More information....

- **Web pages:** <http://www.naturalengland.org.uk/ipens2000>
- **IPENS mailbox:** [IPENSLIFEProject@naturalengland.org.uk](mailto:IPENSLIFEProject@naturalengland.org.uk)





# Questions

