



# A clear solution for farmers

CATCHMENT SENSITIVE FARMING

## Minimising Sediment runoff into Wensum and North Norfolk Rivers catchments

### River Wensum Catchment (2)

CSFO: Stephen Haley

#### Farm Description

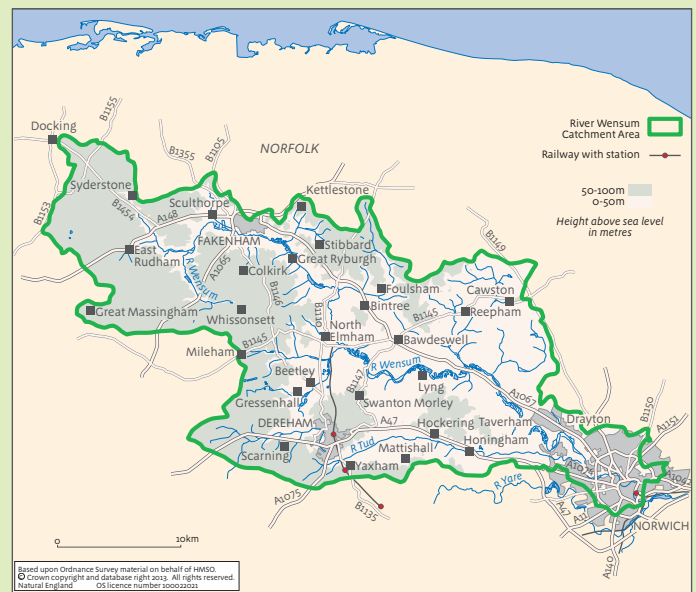
The tributaries, drains and roads lacing arable holding Church Farm in Norfolk all connect to the Wensum and North Norfolk Rivers Catchment. The Wensum, designated SSSI, is in 'largely unfavourable' condition because of high levels of suspended solids in the river largely sourced from agriculture. The CSFO advised the farmer Anthony Seaman - already proactively reducing run-off through better soil management- on how to further reduce the risk of pollution entering the rivers. The farm has an ELS agreement.

#### Pollution Problems

The soil composition on the farm accentuated the risk of run-off; the sandy loam to sandy clay loam soil was well drained and aerated, but it was prone to drying out and needed lots of inputs. The farm also had poor Soil Organic Matter levels which made the topsoil unstable. Run-off had occasionally caused problems on a main road.

#### Pollution Solutions

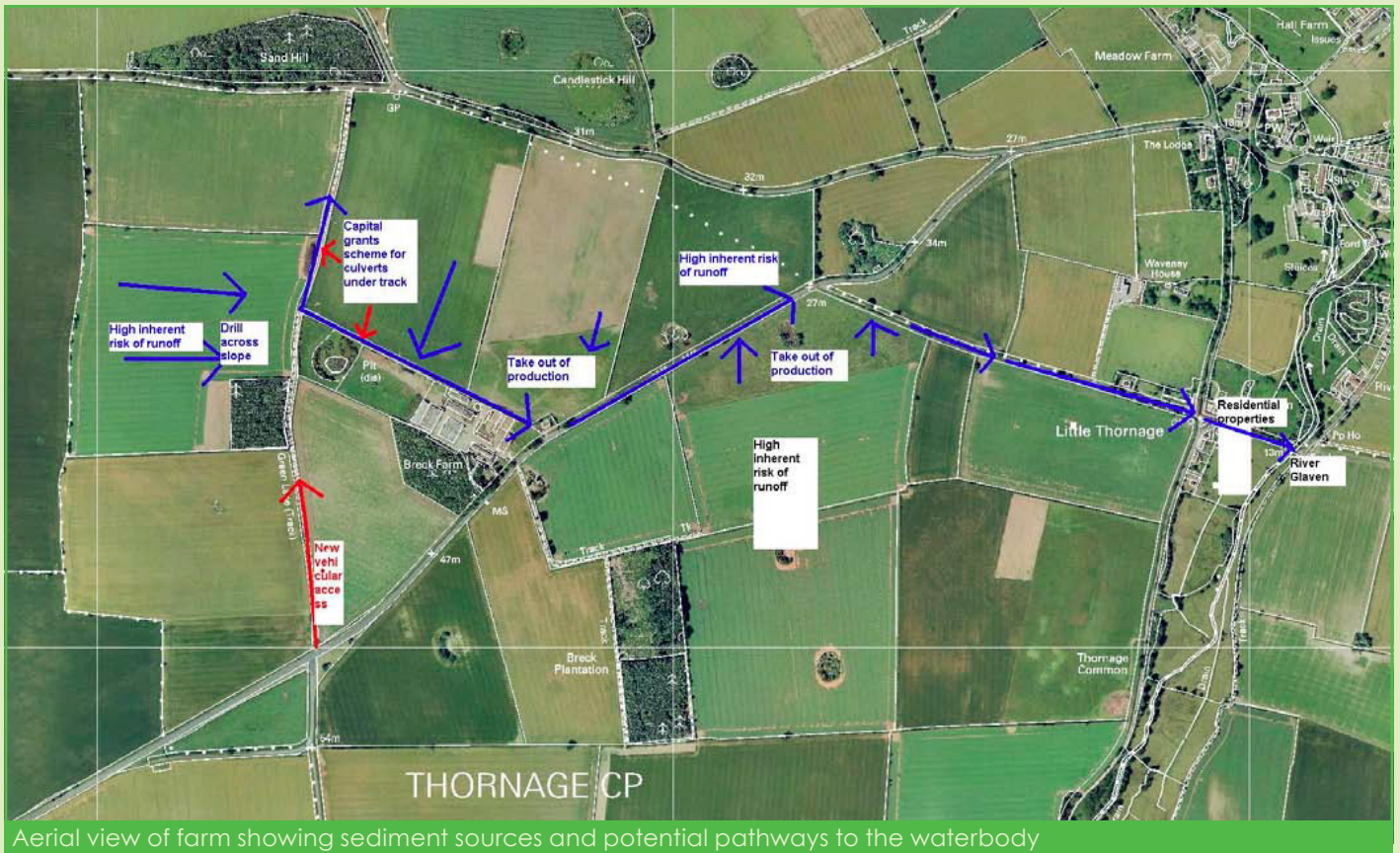
1. In an effort to increase soil organic matter and improve the stability of the top soil Dougal and a Soil Organic Matter contract advisor suggested retaining crop residues and applying manures. The farmer now uses poultry manure in the crop rotation.



2. As part of the farmer's ELS Soil Management Plan he had already begun the process of analysing soil erosion and run-off from each of his fields. From these results Dougal advised on the need to sow winter cereals early to maximize crop cover before winter rains, and the need to avoid fine seedbeds. He suggested sub-soiling to reduce the soil compaction caused when the farmer harvested his root crops.
3. As part of his recent HLS application the farmer has also decided to suspend cropping in parts of his fields most at risk of run-off. Dougal advised on the advantages of establishing tramlines across a slope when sowing.

#### Farmer Engagement and Motivation

The farmer was aware of CSF and approached the CSFO for advice. He was familiar with, and in some cases already practicing CSF.



Aerial view of farm showing sediment sources and potential pathways to the waterbody

Catchment Sensitive Farming Officer (CSFO)  
**Stephen Haley**  
 Natural England, Norwich  
 0300 060 0667/07917 722154  
 stephen.haley@naturalengland.org.uk

[www.naturalengland.org.uk/csf](http://www.naturalengland.org.uk/csf)

Catchment Sensitive Farming (CSF) is delivered in partnership by Natural England, the Environment Agency and Defra.



Department for Environment Food & Rural Affairs



Environment Agency



Funding is from the European Agricultural Fund for Rural Development: Europe investing in rural areas.