

36/89

ALC
NINE MILE HILL
~~ROTTISHAM~~
CAMBRIDGESHIRE

(C)

excluded
↓

Whitelands

Tel Ex

A 1303

36m

A45(T)

A11(T)

1:10,000

Pls show contour & pos
Scopics pls.

1-2818 pls

WSI WATER

see map

Spring Hall

MS

Track

Track

Track

Cupulus

Cupulus

Track

Track

Heath

9 MILE HILL
1:5000

3a

3b

3b

3a

3b

3b

3b

3a

3a

3b

52m

52m

40m

45m

35m

30m

25m

20m

20m

25m

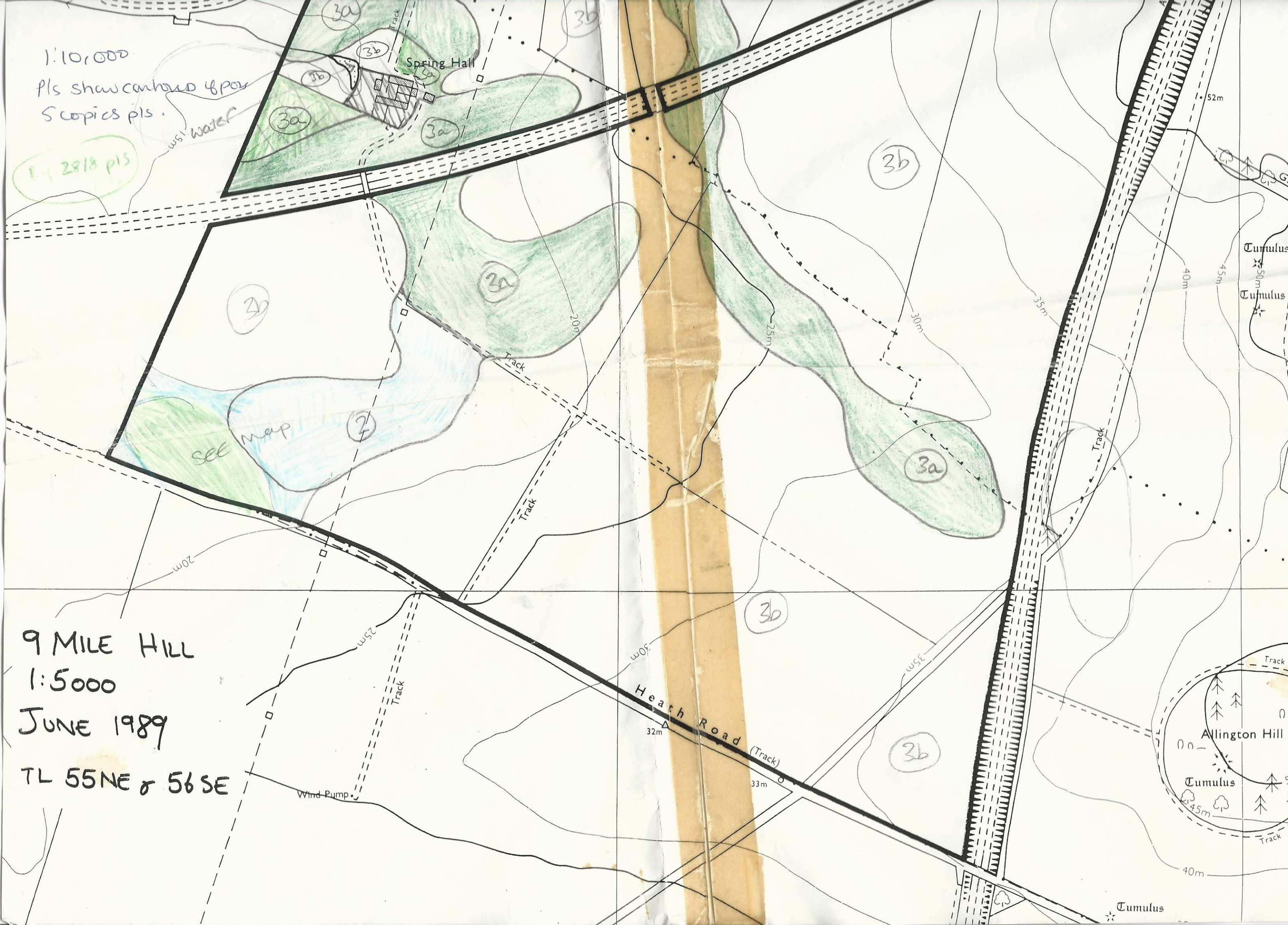
50m

35m

1:10,000

Pls show contour & pos
Scopis pls.

1-2818 pls



9 MILE HILL

1:5000

JUNE 1989

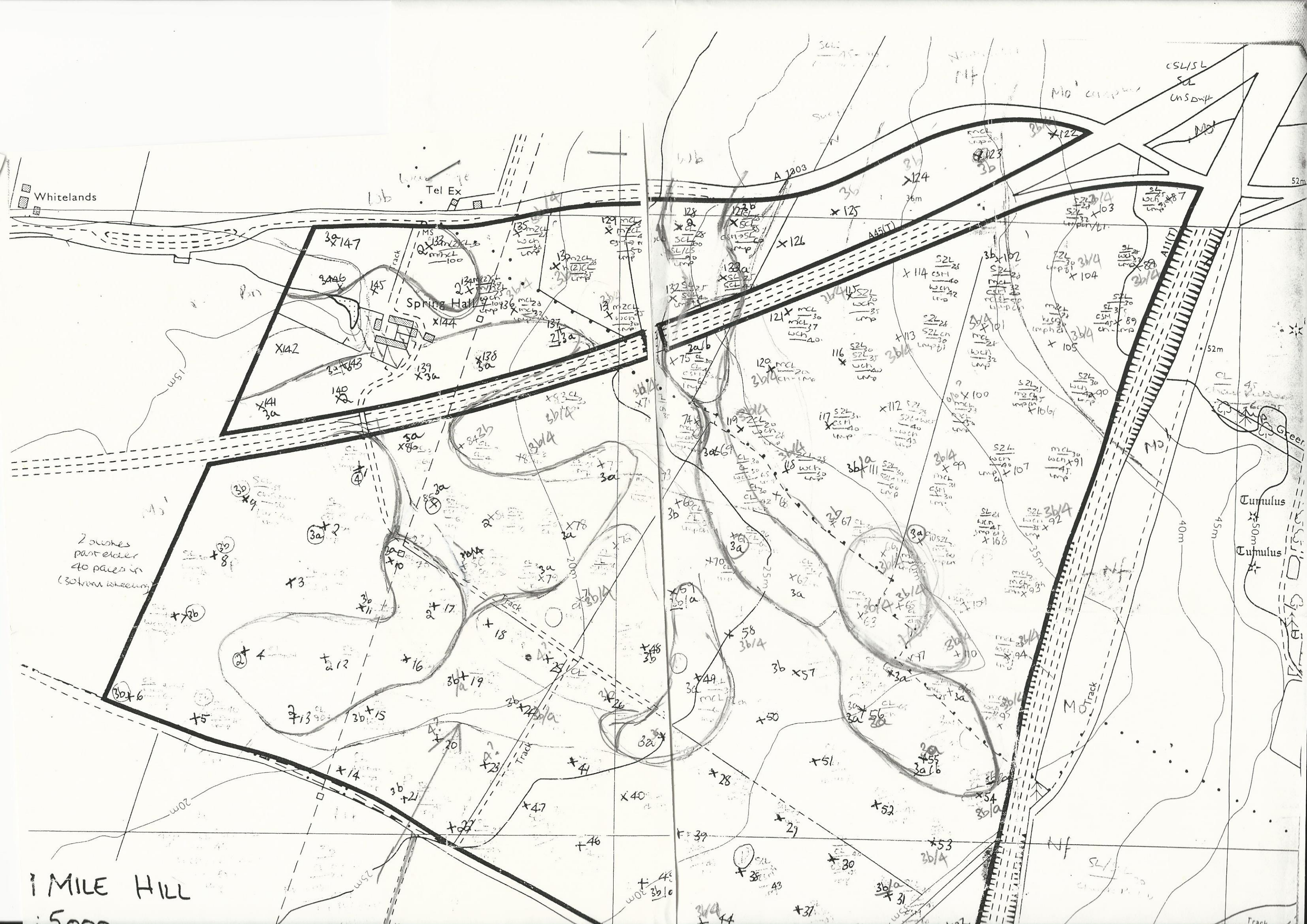
TL 55NE & 56SE

Tumulus
* 50m
Tumulus
* 45m

Allington Hill

Tumulus
* 45m

Tumulus
* 40m



Whitelands

Tel Ex

Spring Hall

Tumulus
50m
Tumulus

1 MILE HILL

5000

2 bushes
past each
40 paces in
(30 from wheeling)

36/89

1 MILE HILL

:5000

JUNE 1989

- 55 NE & 56 SE

Same veg
3a, same
4.

Wind Pump

