

Identification of Functionally Linked Land supporting SPA waterbirds in the North West of England

Appendix 9 – Functionally Linked Maps (datasets combined)

First published October 2021

Natural England Commissioned Report NECR361

Drawn by: LB
Checked by: HD
Date: 05.05.2021



Legend

Functionally Linked Land:

- Negligible potential
- Low potential
- Moderate potential
- High potential

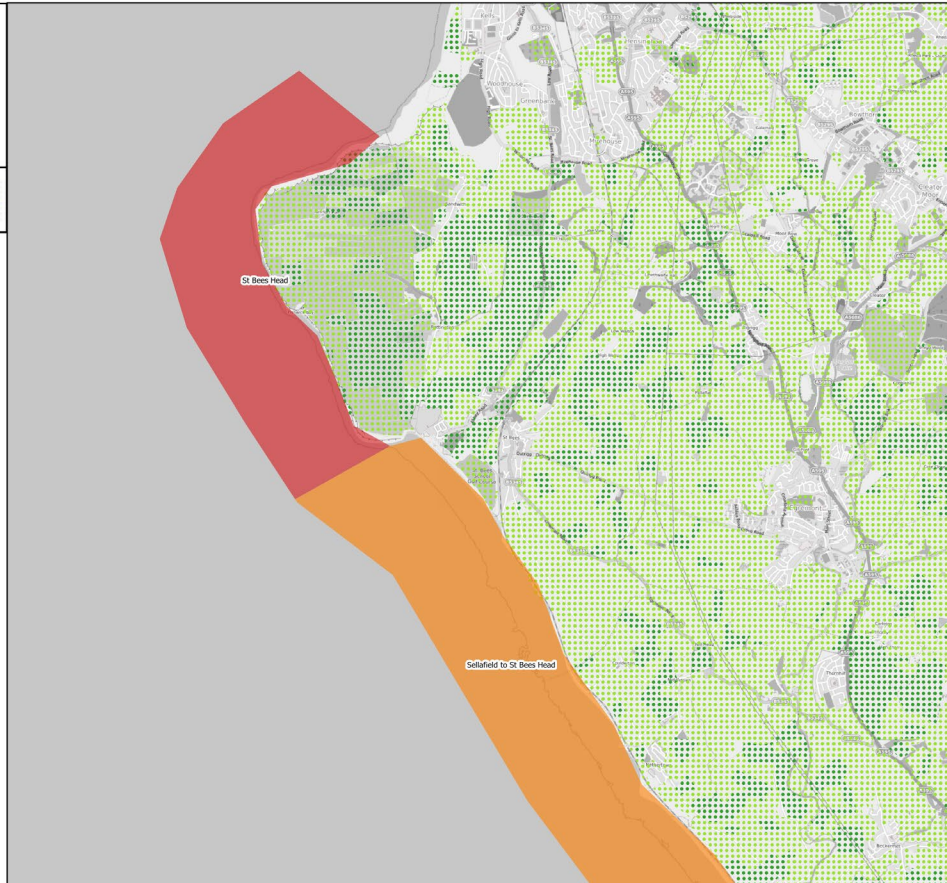
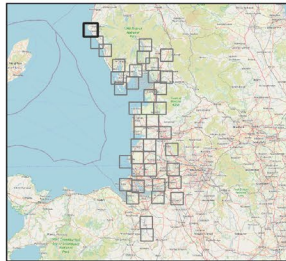
Special Protection Area (SPA)

LCM15 Habitat Layer (CEH) - suitable habitat for water birds

- Arable and horticulture
- Improved grassland

© Natural England 2021
© OpenStreetMap contributors 2021

All data sources used to produce these maps and licencing information can be found in Appendix 1 of the Functionally Linked Land Project Report.



Drawn by: LB
Checked by: HD
Date: 05.05.2021



Legend

Functionally Linked Land:

- Negligible potential
- Low potential
- Moderate potential
- High potential

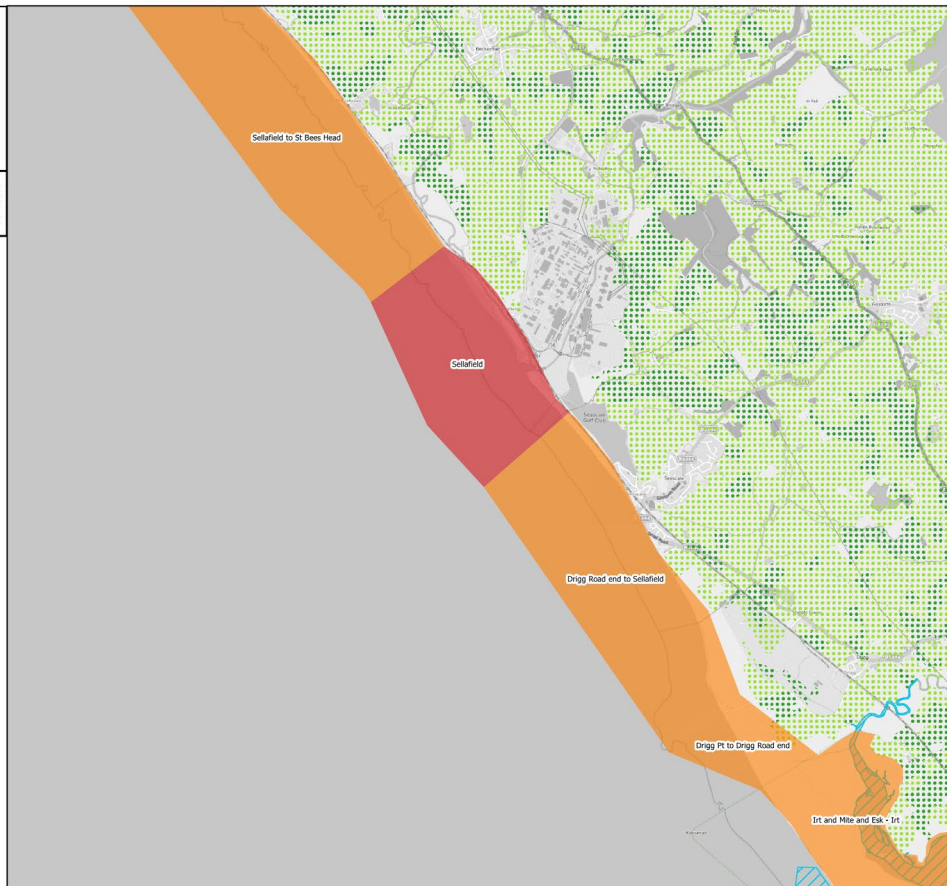
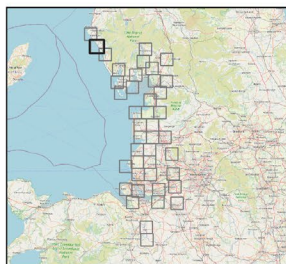
Special Protection Area (SPA)

LCM15 Habitat Layer (CEH) - suitable habitat for water birds

- Arable and horticulture
- Improved grassland

© Natural England 2021
© OpenStreetMap contributors 2021

All data sources used to produce these maps and licencing information can be found in Appendix 1 of the Functionally Linked Land Project Report.



Drawn by: LB
Checked by: HD
Date: 05.05.2021



Legend

Functionally Linked Land:

- Negligible potential
- Low potential
- Moderate potential
- High potential

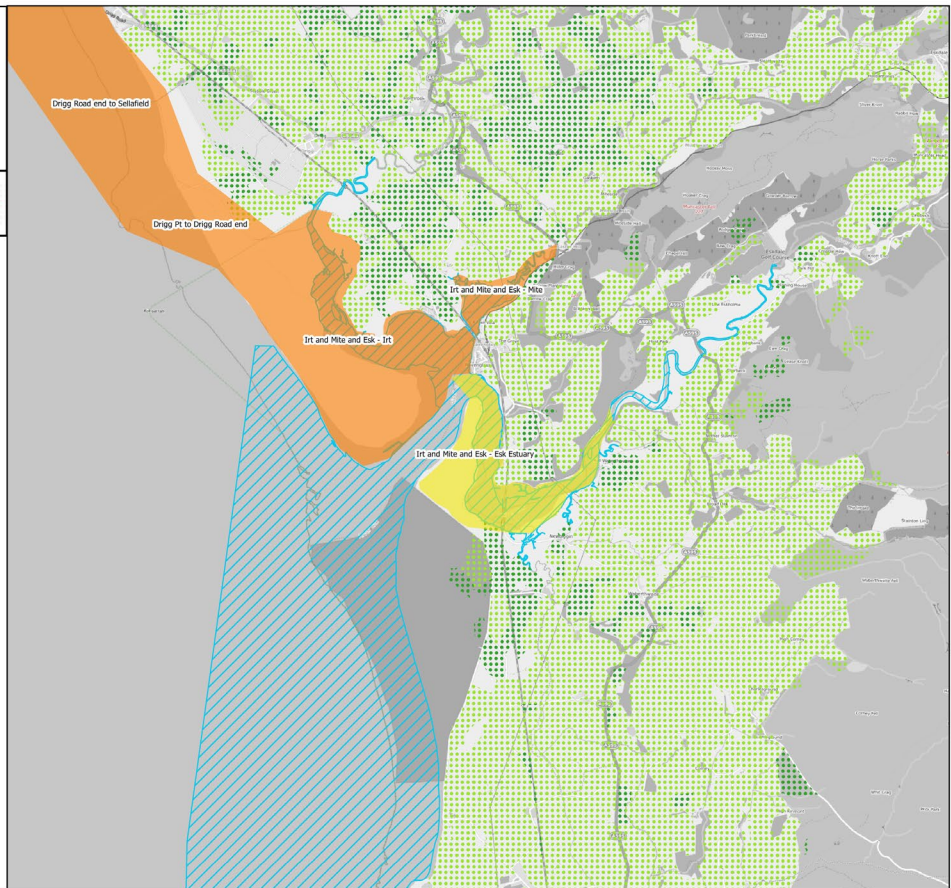
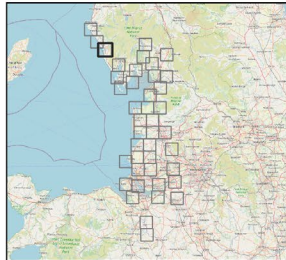
Special Protection Area (SPA)

LCM15 Habitat Layer (CEH) - suitable habitat for water birds

- Arable and horticulture
- Improved grassland

© Natural England 2021
© OpenStreetMap contributors 2021

All data sources used to produce these maps and licencing information can be found in Appendix 1 of the Functionally Linked Land Project Report.



Drawn by: LB
Checked by: HD
Date: 05.05.2021



Legend

Functionally Linked Land:

- Negligible potential
- Low potential
- Moderate potential
- High potential

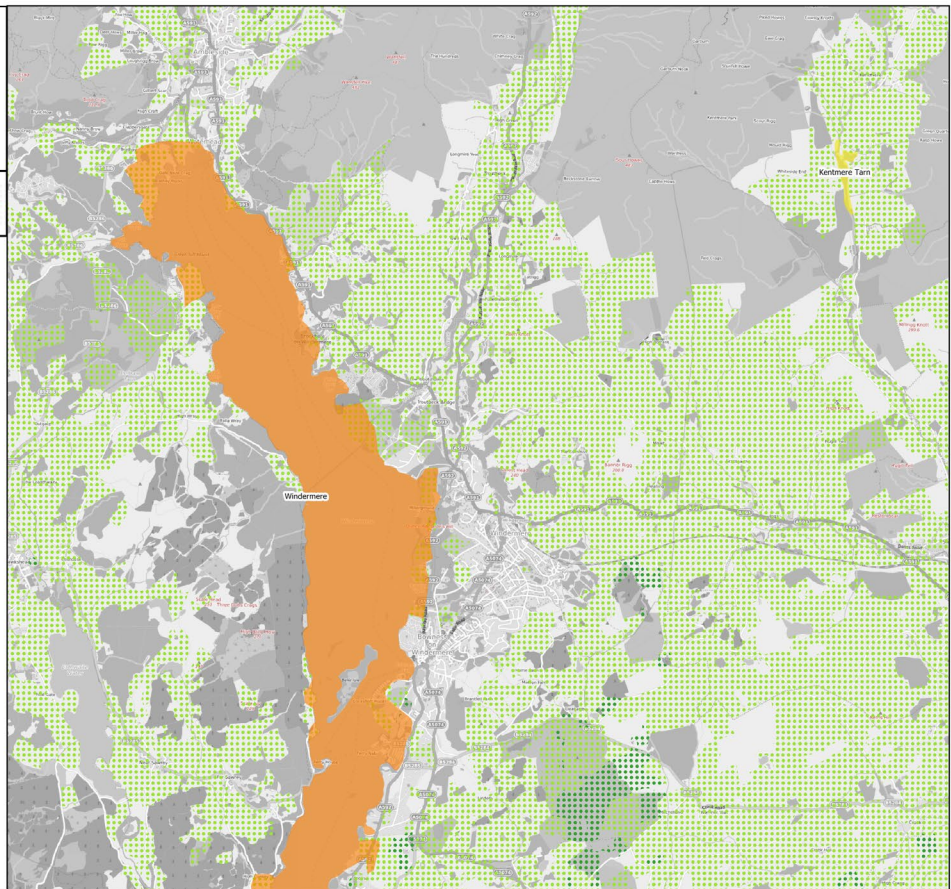
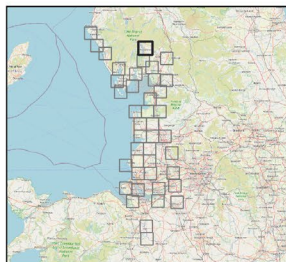
Special Protection Area (SPA)

LCM15 Habitat Layer (CEH) - suitable habitat for water birds

- Arable and horticulture
- Improved grassland

© Natural England 2021
© OpenStreetMap contributors 2021

All data sources used to produce these maps and licencing information can be found in Appendix 1 of the Functionally Linked Land Project Report.



Drawn by: LB
 Checked by: HD
 Date: 05.05.2021



Legend

Functionally Linked Land:

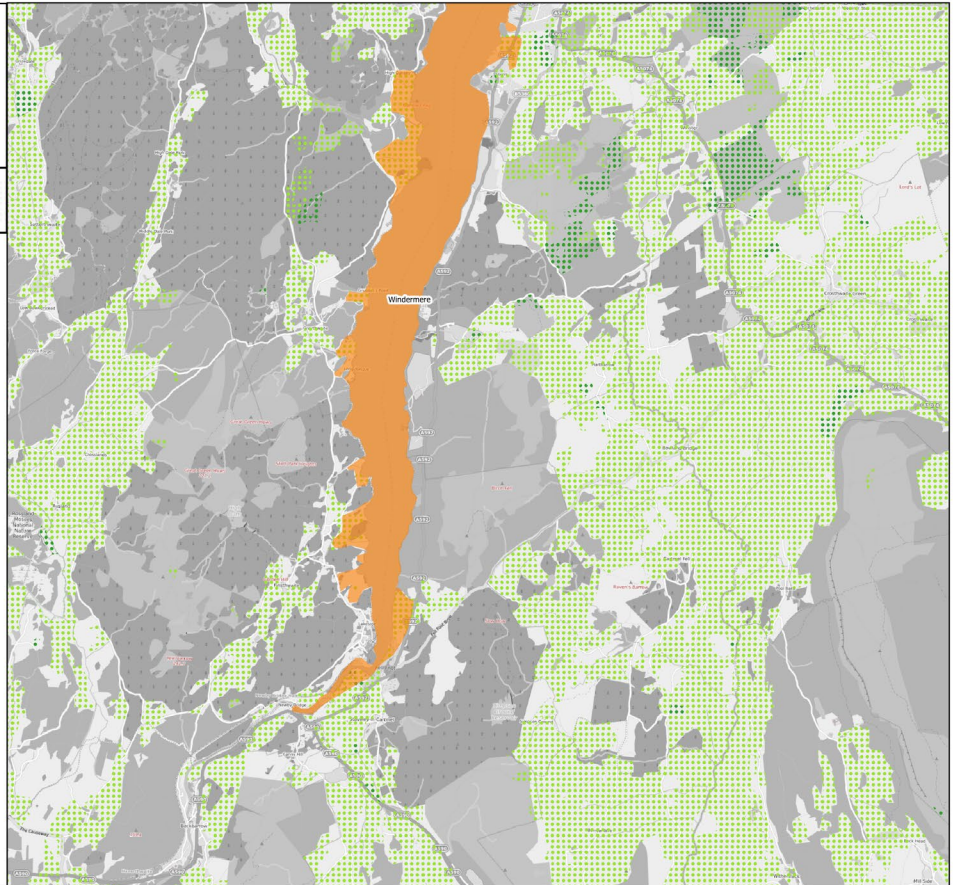
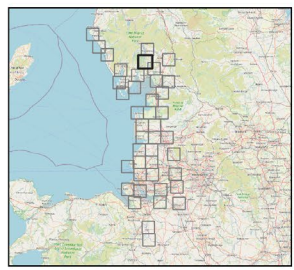
- Negligible potential
- Low potential
- Moderate potential
- High potential
- Special Protection Area (SPA)

LCM15 Habitat Layer (CEH) - suitable habitat for water birds

- Arable and horticulture
- Improved grassland

© Natural England 2021
 © OpenStreetMap contributors 2021

All data sources used to produce these maps and licencing information can be found in Appendix 1 of the Functionally Linked Land Project Report.



Drawn by: LB
 Checked by: HD
 Date: 05.05.2021



Legend

Functionally Linked Land:

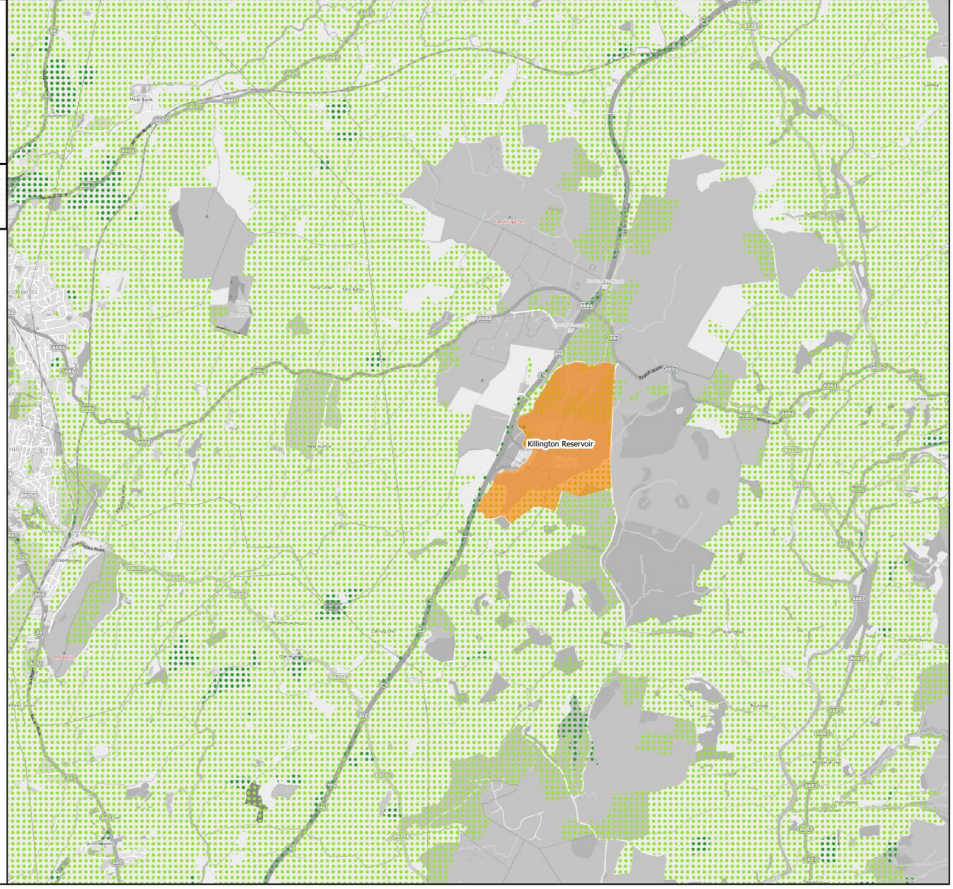
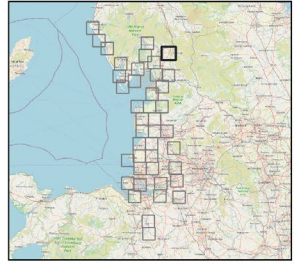
- Negligible potential
- Low potential
- Moderate potential
- High potential
- Special Protection Area (SPA)

LCM15 Habitat Layer (CEH) - suitable habitat for water birds

- Arable and horticulture
- Improved grassland

© Natural England 2021
 © OpenStreetMap contributors 2021

All data sources used to produce these maps and licencing information can be found in Appendix 1 of the Functionally Linked Land Project Report.



Drawn by: LB
Checked by: HD
Date: 05.05.2021



Legend

Functionally Linked Land:

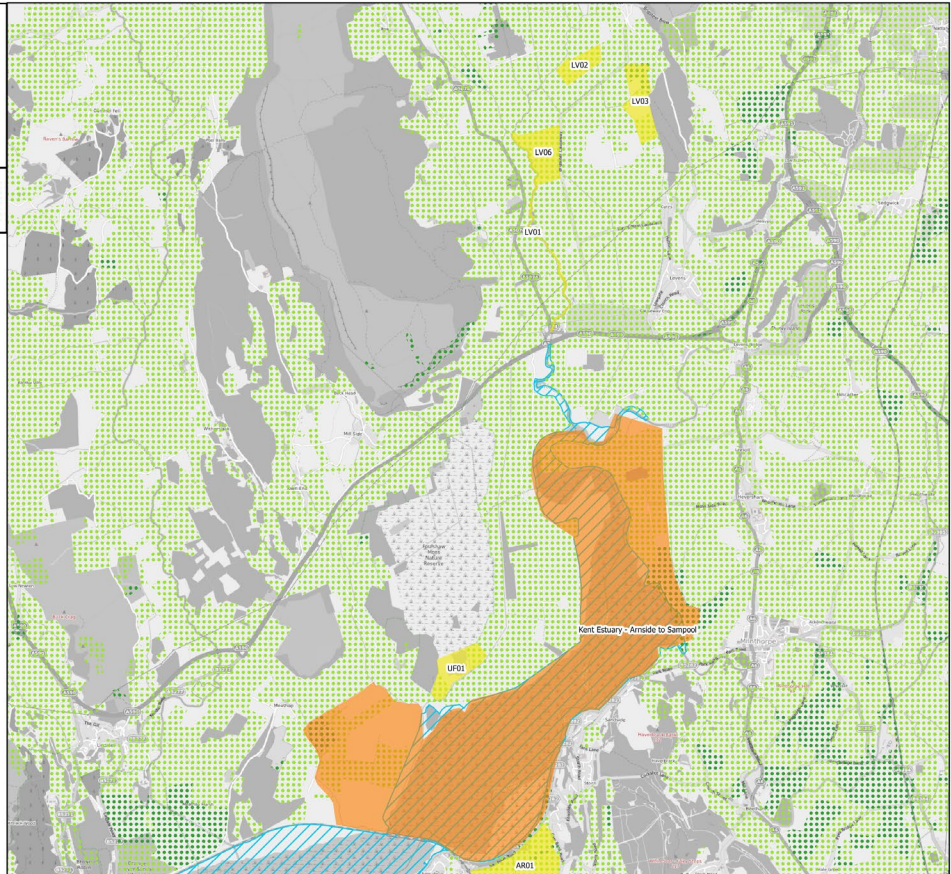
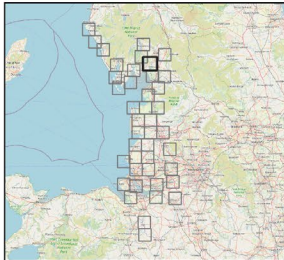
- Negligible potential
- Low potential
- Moderate potential
- High potential
- Special Protection Area (SPA)

LCM15 Habitat Layer (CEH) - suitable habitat for water birds

- Arable and horticulture
- Improved grassland

© Natural England 2021
© OpenStreetMap contributors 2021

All data sources used to produce these maps and licencing information can be found in Appendix 1 of the Functionally Linked Land Project Report.



Drawn by: LB
Checked by: HD
Date: 05.05.2021



Legend

Functionally Linked Land:

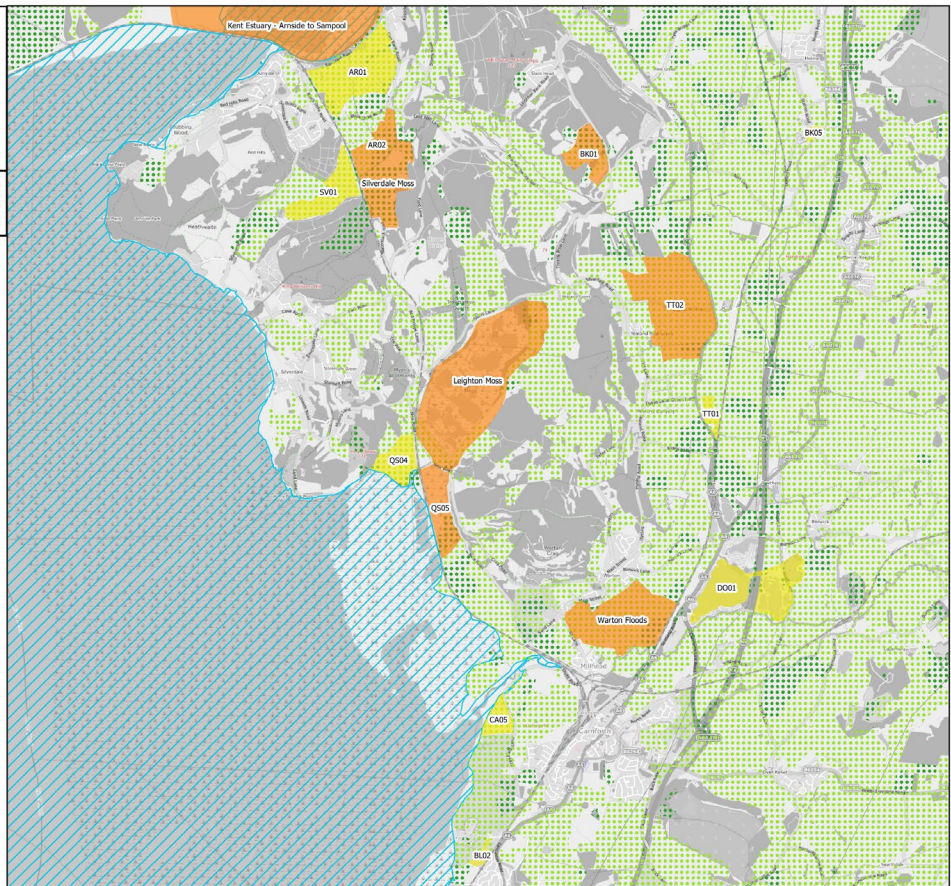
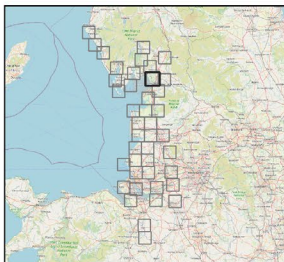
- Negligible potential
- Low potential
- Moderate potential
- High potential
- Special Protection Area (SPA)

LCM15 Habitat Layer (CEH) - suitable habitat for water birds

- Arable and horticulture
- Improved grassland

© Natural England 2021
© OpenStreetMap contributors 2021

All data sources used to produce these maps and licencing information can be found in Appendix 1 of the Functionally Linked Land Project Report.



Legend

Functionally Linked Land:

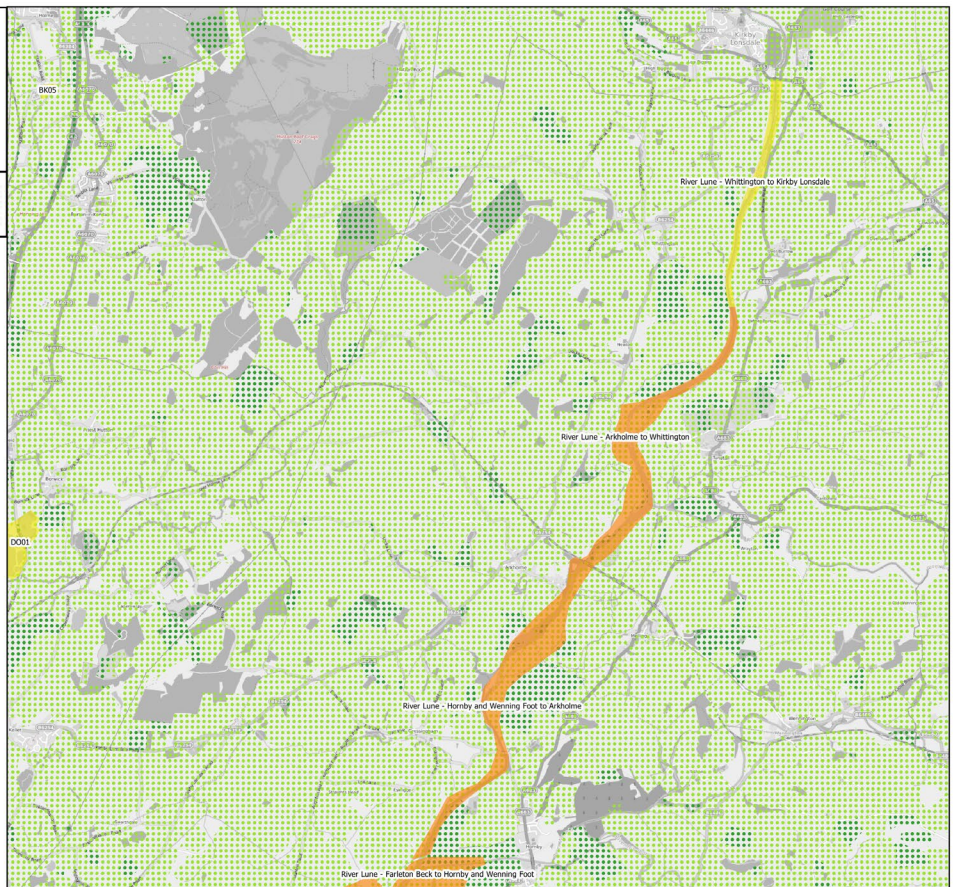
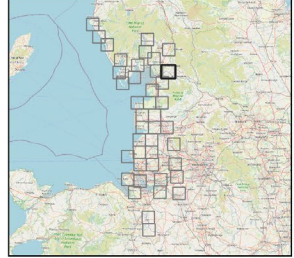
- Negligible potential
- Low potential
- Moderate potential
- High potential
- Special Protection Area (SPA)

LCM15 Habitat Layer (CEH) - suitable habitat for water birds

- Arable and horticulture
- Improved grassland

© Natural England 2021
 © OpenStreetMap contributors 2021

All data sources used to produce these maps and licencing information can be found in Appendix 1 of the Functionally Linked Land Project Report.



Legend

Functionally Linked Land:

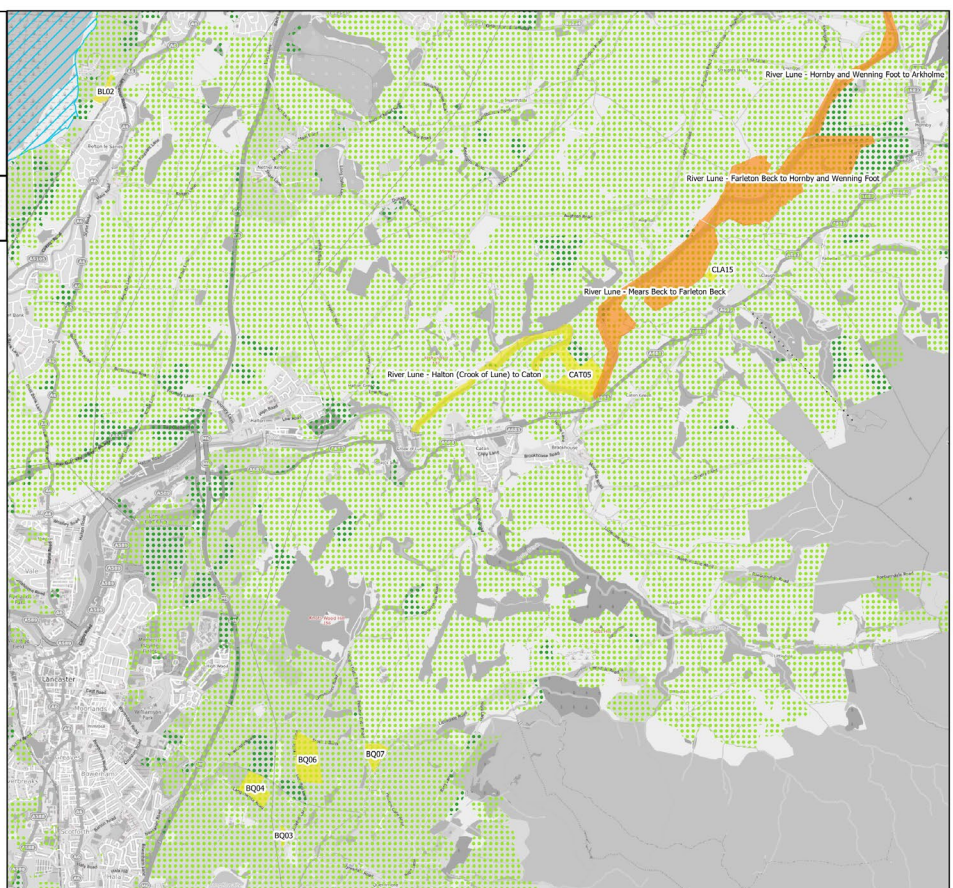
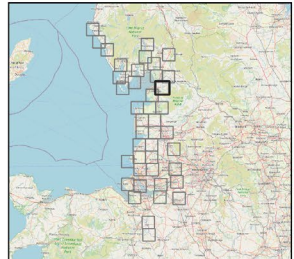
- Negligible potential
- Low potential
- Moderate potential
- High potential
- Special Protection Area (SPA)

LCM15 Habitat Layer (CEH) - suitable habitat for water birds

- Arable and horticulture
- Improved grassland

© Natural England 2021
 © OpenStreetMap contributors 2021

All data sources used to produce these maps and licencing information can be found in Appendix 1 of the Functionally Linked Land Project Report.



Drawn by: LB
Checked by: HD
Date: 05.05.2021



Legend

Functionally Linked Land:

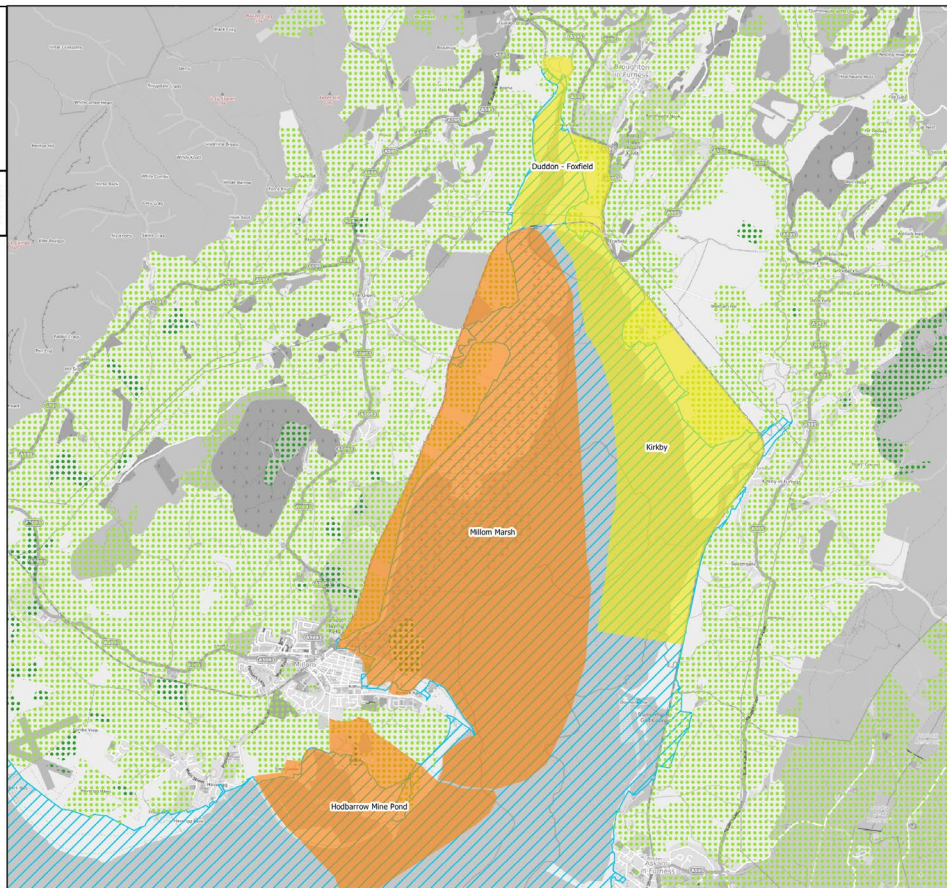
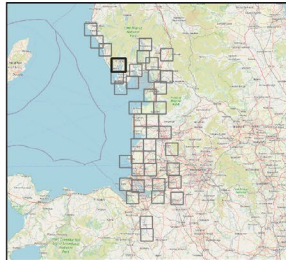
- Negligible potential
- Low potential
- Moderate potential
- High potential
- Special Protection Area (SPA)

LCM15 Habitat Layer (CEH) - suitable habitat for water birds

- Arable and horticulture
- Improved grassland

© Natural England 2021
© OpenStreetMap contributors 2021

All data sources used to produce these maps and licencing information can be found in Appendix 1 of the Functionally Linked Land Project Report.



Drawn by: LB
Checked by: HD
Date: 05.05.2021



Legend

Functionally Linked Land:

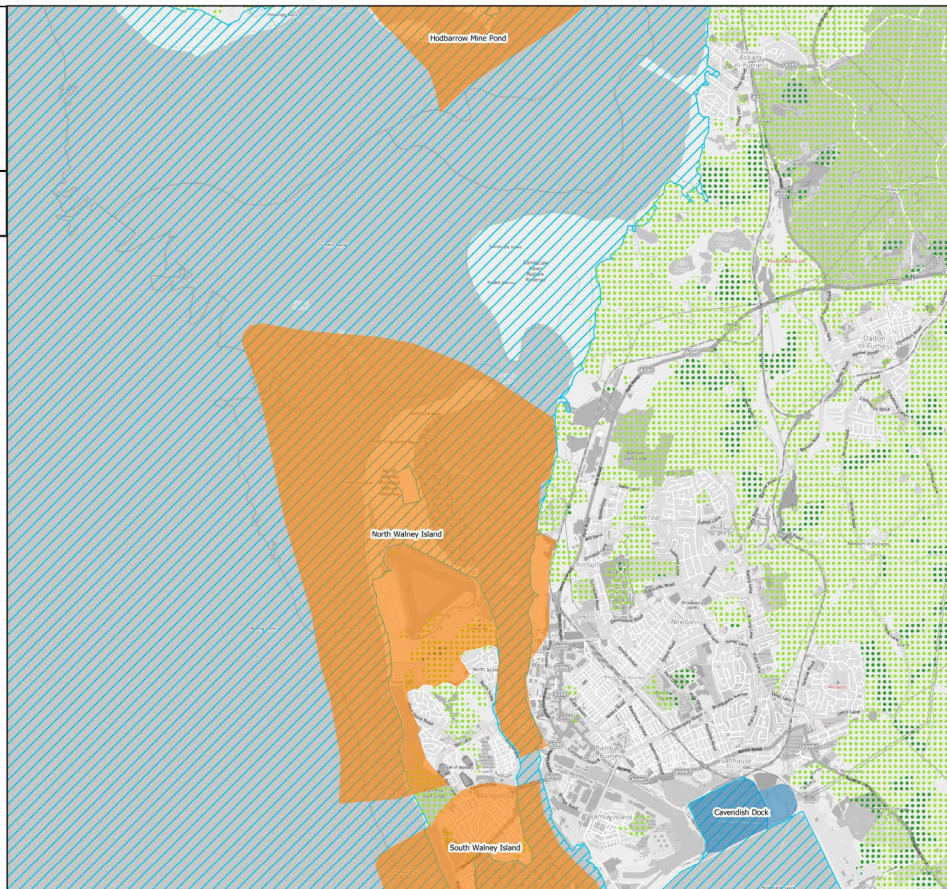
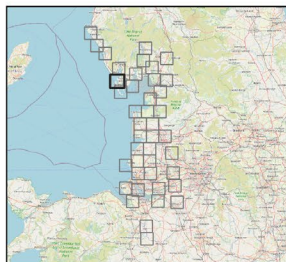
- Negligible potential
- Low potential
- Moderate potential
- High potential
- Special Protection Area (SPA)

LCM15 Habitat Layer (CEH) - suitable habitat for water birds

- Arable and horticulture
- Improved grassland

© Natural England 2021
© OpenStreetMap contributors 2021

All data sources used to produce these maps and licencing information can be found in Appendix 1 of the Functionally Linked Land Project Report.



BOW17/1209 Natural England Functionally Linked Land (FLL) Project
 Drawing title: Final FLL Plans
 Page 13 of 42

Drawn by: LB
 Checked by: HD
 Date: 05.05.2021



Legend

Functionally Linked Land:

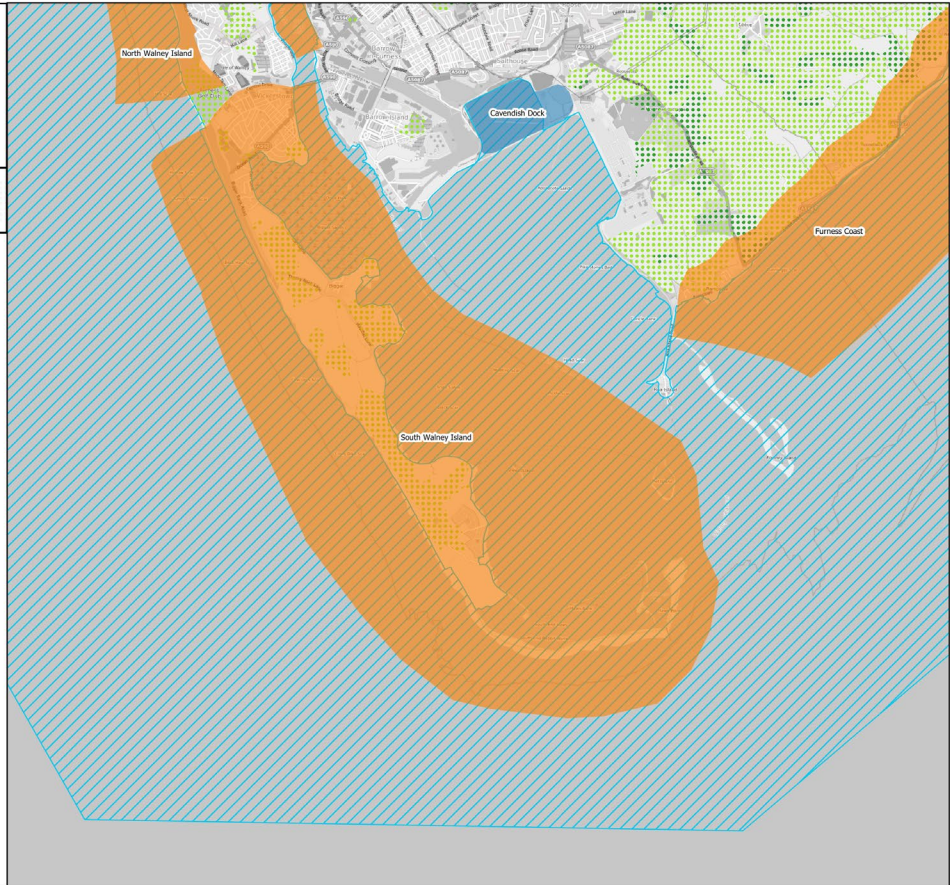
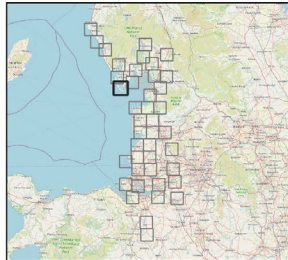
- Negligible potential
- Low potential
- Moderate potential
- High potential
- Special Protection Area (SPA)

LCM15 Habitat Layer (CEH) - suitable habitat for water birds

- Arable and horticulture
- Improved grassland

© Natural England 2021
 © OpenStreetMap contributors 2021

All data sources used to produce these maps and licencing information can be found in Appendix 1 of the Functionally Linked Land Project Report.



BOW17/1209 Natural England Functionally Linked Land (FLL) Project
 Drawing title: Final FLL Plans
 Page 14 of 42

Drawn by: LB
 Checked by: HD
 Date: 05.05.2021



Legend

Functionally Linked Land:

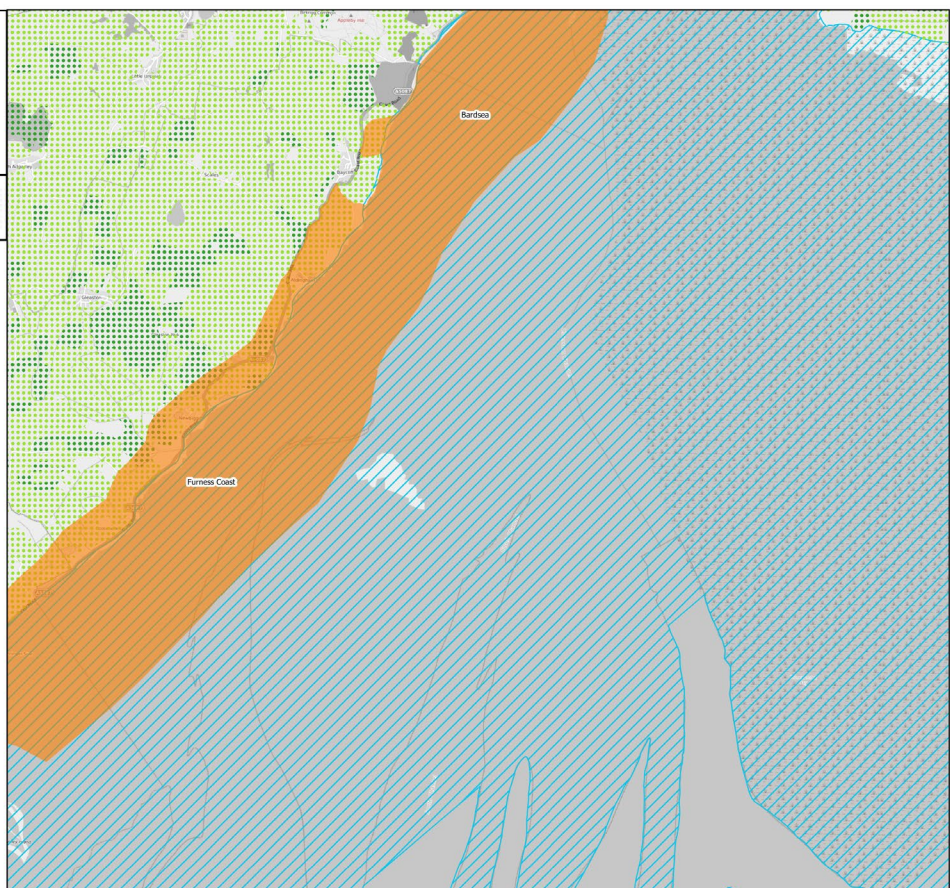
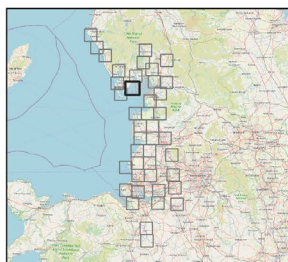
- Negligible potential
- Low potential
- Moderate potential
- High potential
- Special Protection Area (SPA)

LCM15 Habitat Layer (CEH) - suitable habitat for water birds

- Arable and horticulture
- Improved grassland

© Natural England 2021
 © OpenStreetMap contributors 2021

All data sources used to produce these maps and licencing information can be found in Appendix 1 of the Functionally Linked Land Project Report.



Drawn by: LB
 Checked by: HD
 Date: 05.05.2021



Legend

Functionally Linked Land:

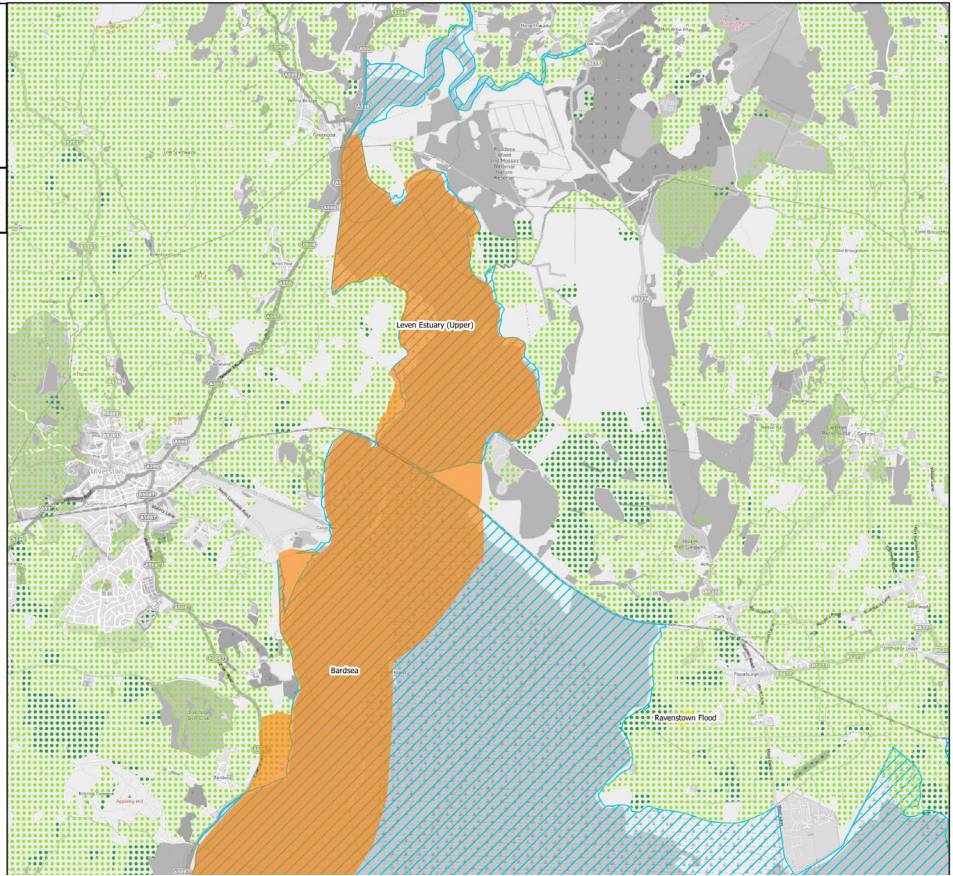
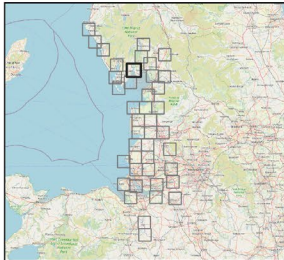
- Negligible potential
- Low potential
- Moderate potential
- High potential
- Special Protection Area (SPA)

LCM15 Habitat Layer (CEH) - suitable habitat for water birds

- Arable and horticulture
- Improved grassland

© Natural England 2021
 © OpenStreetMap contributors 2021

All data sources used to produce these maps and licencing information can be found in Appendix 1 of the Functionally Linked Land Project Report.



Drawn by: LB
 Checked by: HD
 Date: 05.05.2021



Legend

Functionally Linked Land:

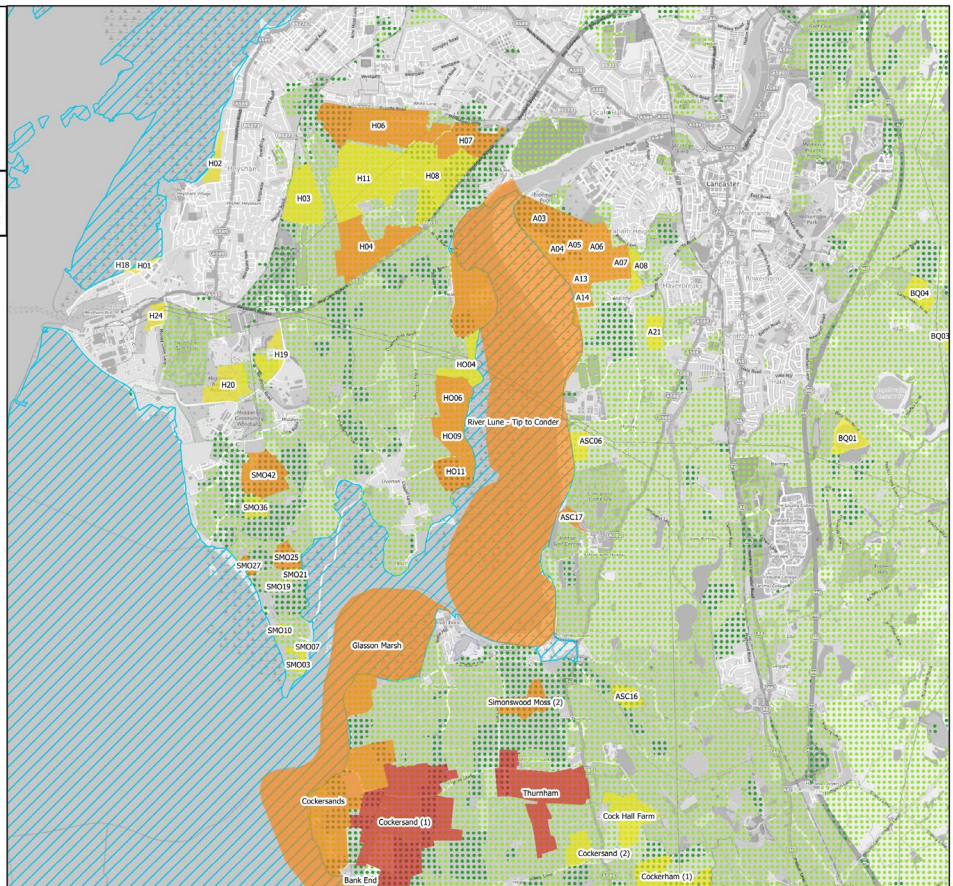
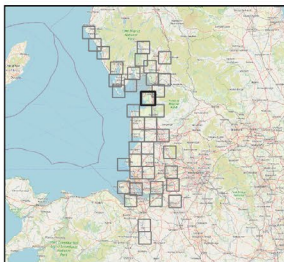
- Negligible potential
- Low potential
- Moderate potential
- High potential
- Special Protection Area (SPA)

LCM15 Habitat Layer (CEH) - suitable habitat for water birds

- Arable and horticulture
- Improved grassland

© Natural England 2021
 © OpenStreetMap contributors 2021

All data sources used to produce these maps and licencing information can be found in Appendix 1 of the Functionally Linked Land Project Report.



Drawn by: LB
Checked by: HD
Date: 05.05.2021



Legend

Functionally Linked Land:

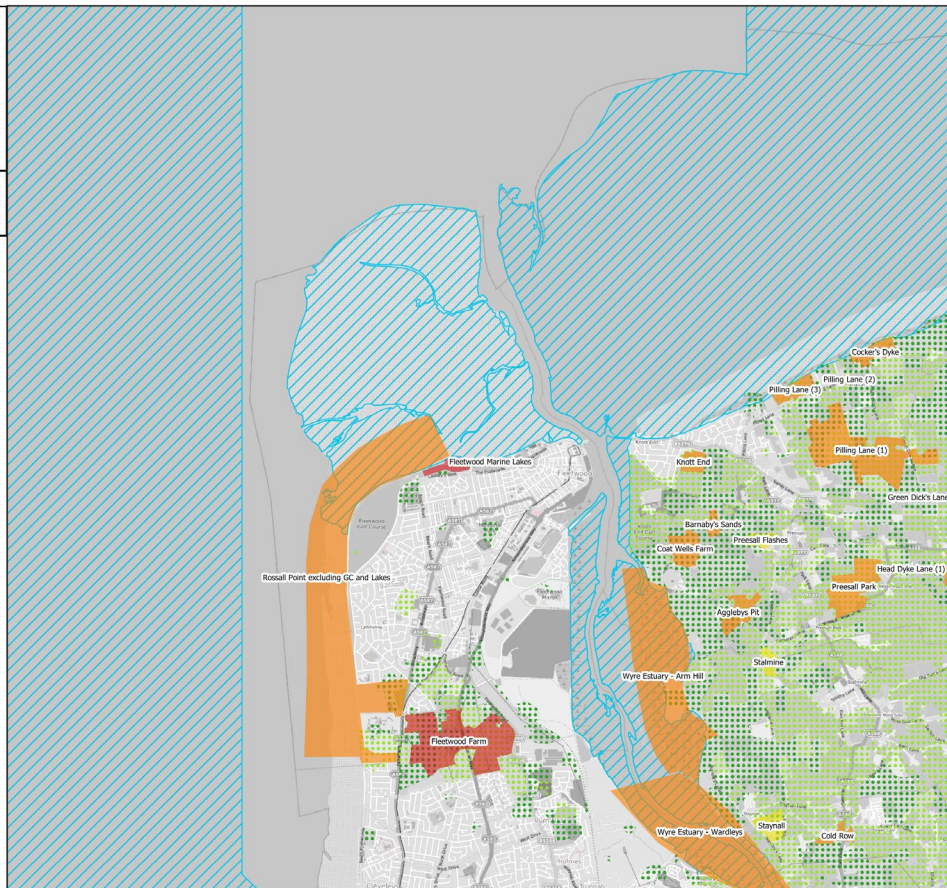
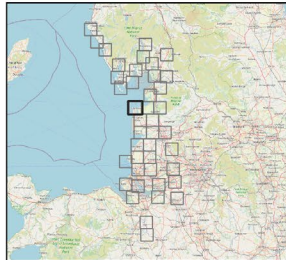
- Negligible potential
- Low potential
- Moderate potential
- High potential
- Special Protection Area (SPA)

LCM15 Habitat Layer (CEH) - suitable habitat for water birds

- Arable and horticulture
- Improved grassland

© Natural England 2021
© OpenStreetMap contributors 2021

All data sources used to produce these maps and licencing information can be found in Appendix 1 of the Functionally Linked Land Project Report.



Drawn by: LB
Checked by: HD
Date: 05.05.2021



Legend

Functionally Linked Land:

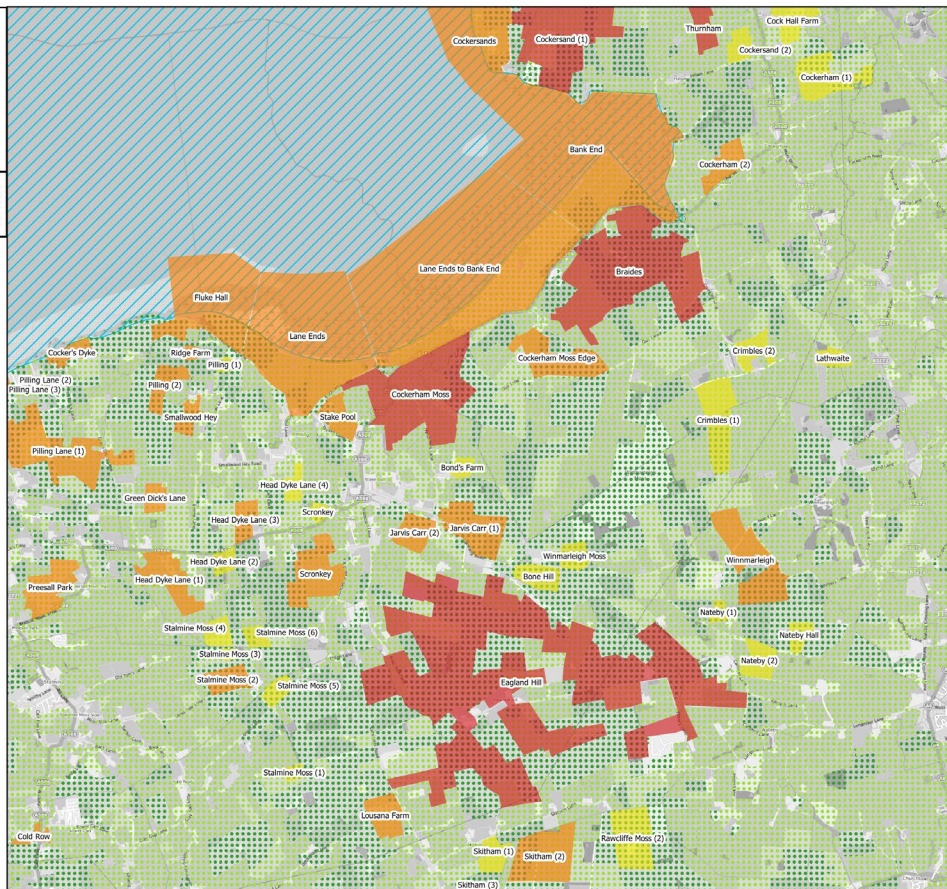
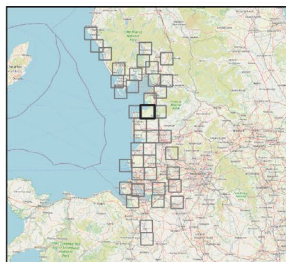
- Negligible potential
- Low potential
- Moderate potential
- High potential
- Special Protection Area (SPA)

LCM15 Habitat Layer (CEH) - suitable habitat for water birds

- Arable and horticulture
- Improved grassland

© Natural England 2021
© OpenStreetMap contributors 2021

All data sources used to produce these maps and licencing information can be found in Appendix 1 of the Functionally Linked Land Project Report.



Drawn by: LB
Checked by: HD
Date: 05.05.2021



Legend

Functionally Linked Land:

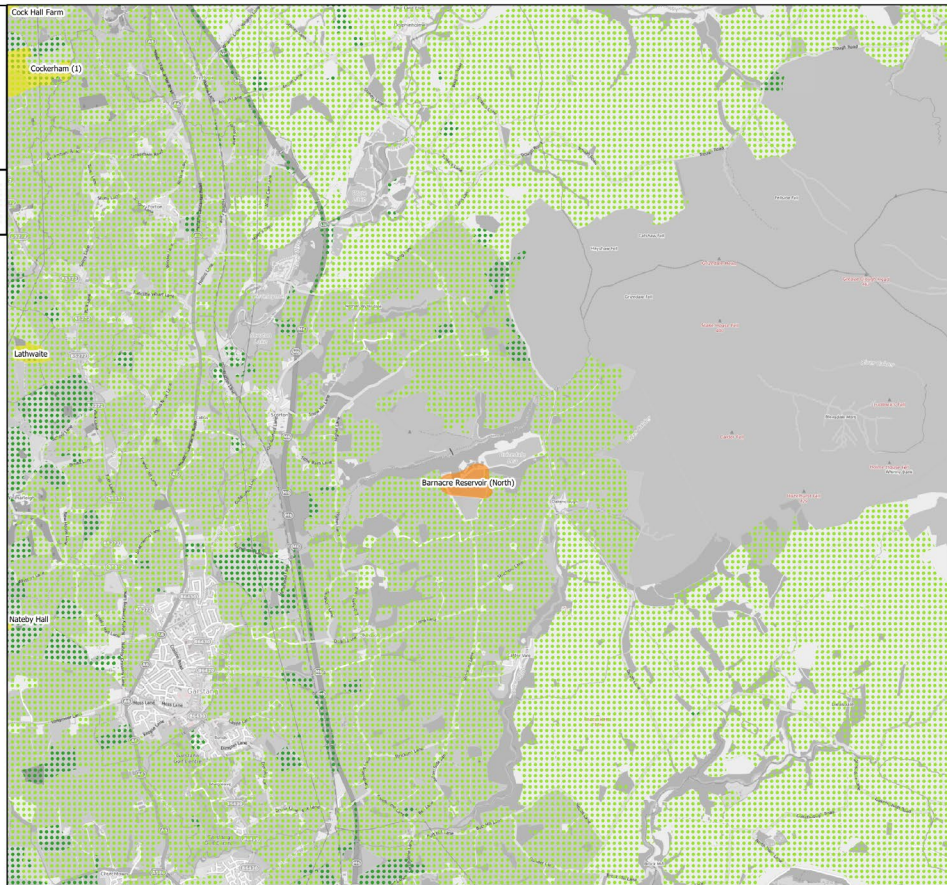
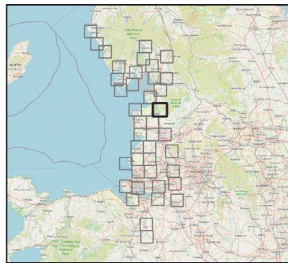
- Negligible potential
- Low potential
- Moderate potential
- High potential
- Special Protection Area (SPA)

LCM15 Habitat Layer (CEH) - suitable habitat for water birds

- Arable and horticulture
- Improved grassland

© Natural England 2021
© OpenStreetMap contributors 2021

All data sources used to produce these maps and licencing information can be found in Appendix 1 of the Functionally Linked Land Project Report.



Drawn by: LB
Checked by: HD
Date: 05.05.2021



Legend

Functionally Linked Land:

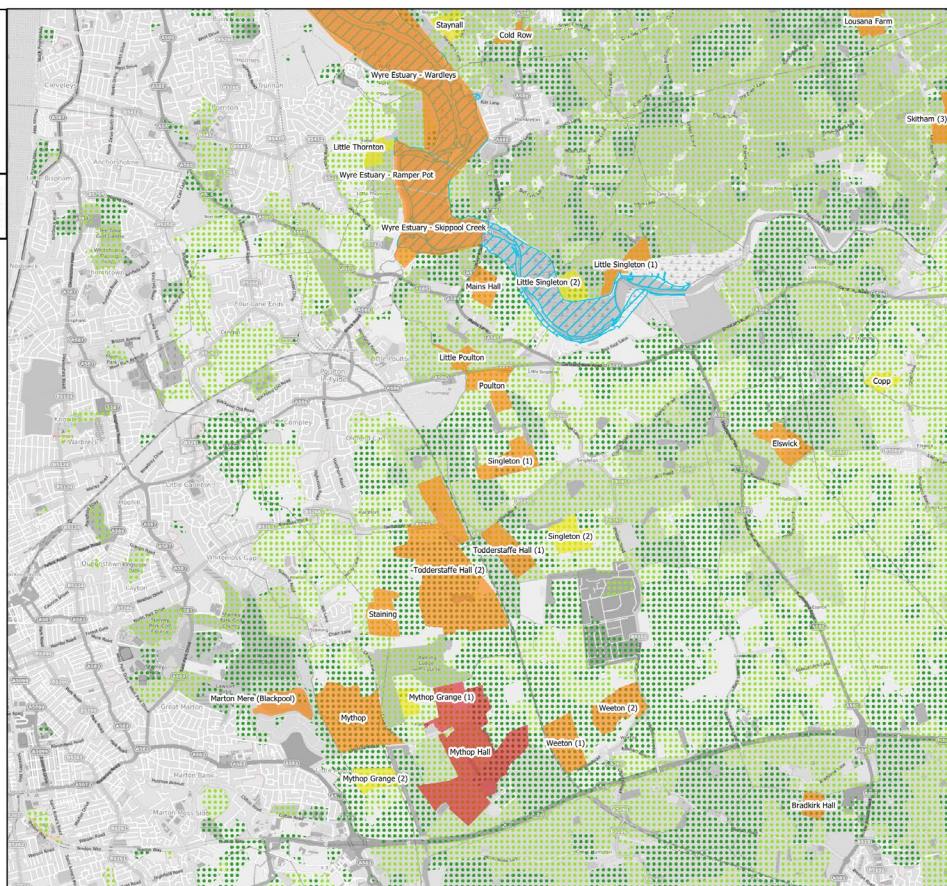
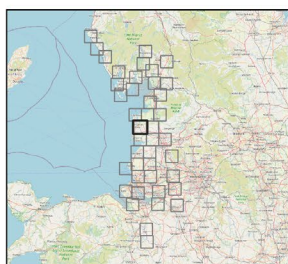
- Negligible potential
- Low potential
- Moderate potential
- High potential
- Special Protection Area (SPA)

LCM15 Habitat Layer (CEH) - suitable habitat for water birds

- Arable and horticulture
- Improved grassland

© Natural England 2021
© OpenStreetMap contributors 2021

All data sources used to produce these maps and licencing information can be found in Appendix 1 of the Functionally Linked Land Project Report.



BOW17/1209 Natural England Functionally Linked Land (FLL) Project

Drawing title: Final FLL Plans

Page 21 of 42

Drawn by: LB
Checked by: HD
Date: 05.05.2021



Legend

Functionally Linked Land:

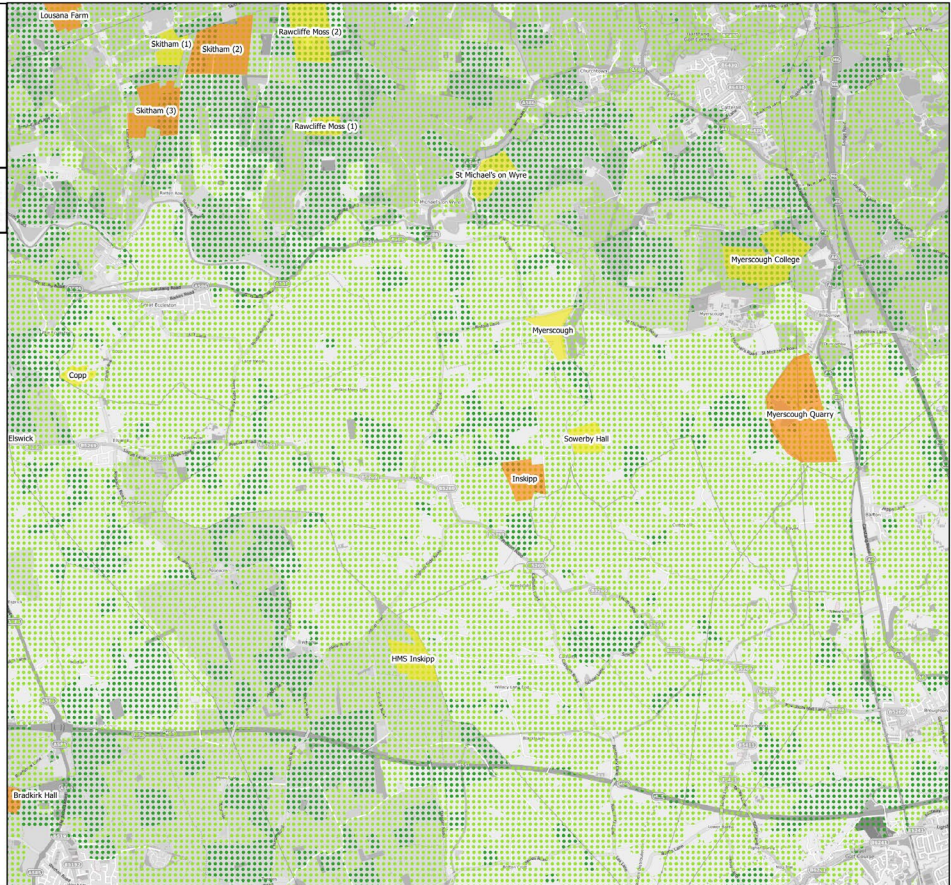
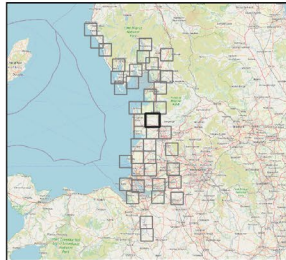
- Negligible potential
- Low potential
- Moderate potential
- High potential
- Special Protection Area (SPA)

LCM15 Habitat Layer (CEH) - suitable habitat for water birds

- Arable and horticulture
- Improved grassland

© Natural England 2021
© OpenStreetMap contributors 2021

All data sources used to produce these maps and licencing information can be found in Appendix 1 of the Functionally Linked Land Project Report.



BOW17/1209 Natural England Functionally Linked Land (FLL) Project

Drawing title: Final FLL Plans

Page 22 of 42

Drawn by: LB
Checked by: HD
Date: 05.05.2021



Legend

Functionally Linked Land:

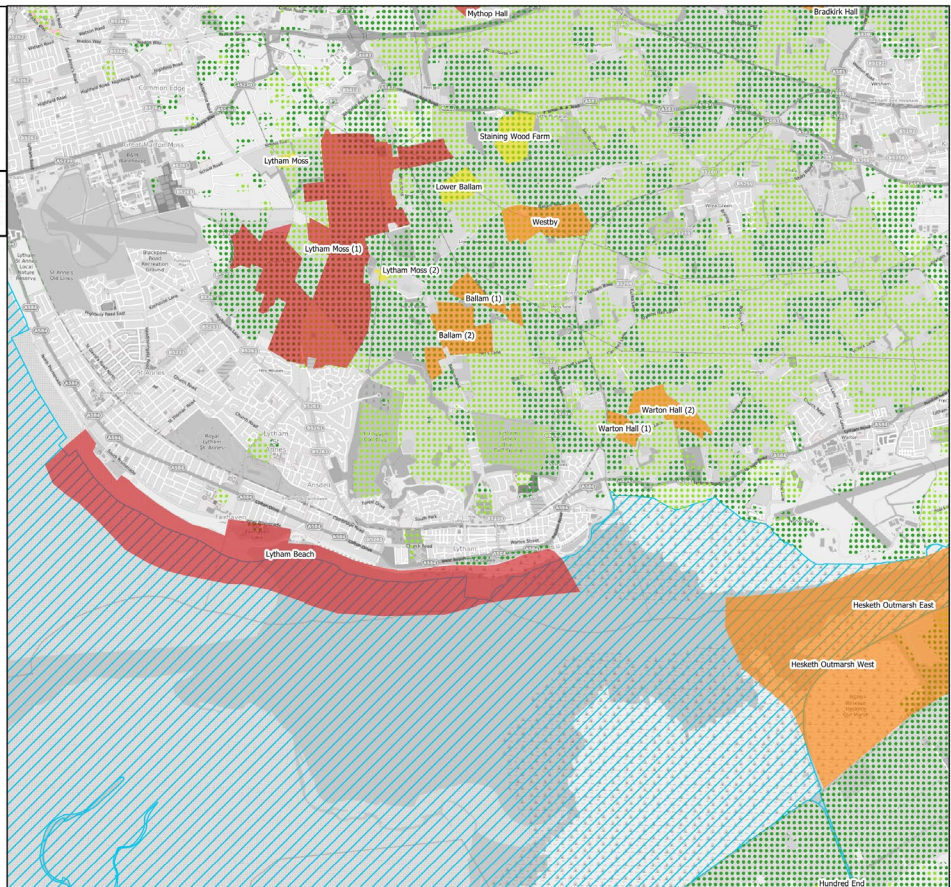
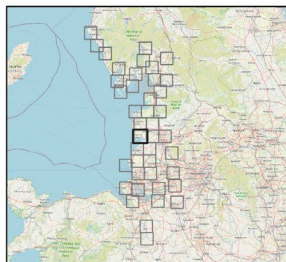
- Negligible potential
- Low potential
- Moderate potential
- High potential
- Special Protection Area (SPA)

LCM15 Habitat Layer (CEH) - suitable habitat for water birds

- Arable and horticulture
- Improved grassland

© Natural England 2021
© OpenStreetMap contributors 2021

All data sources used to produce these maps and licencing information can be found in Appendix 1 of the Functionally Linked Land Project Report.



Legend

Functionally Linked Land:

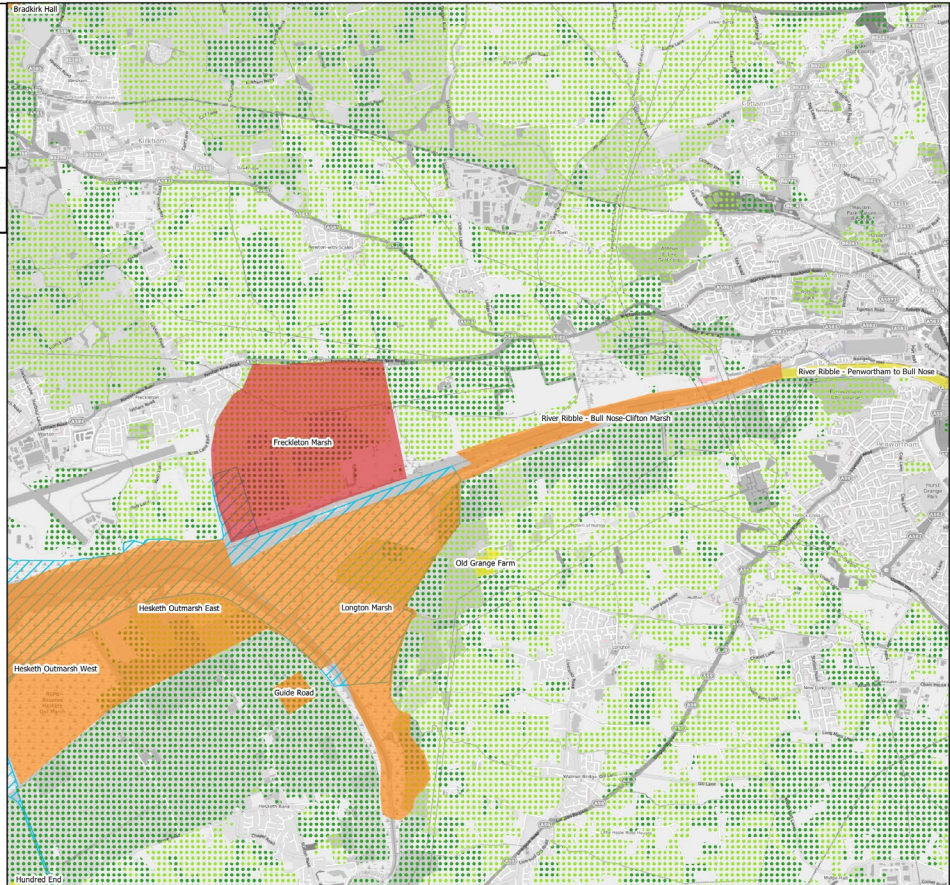
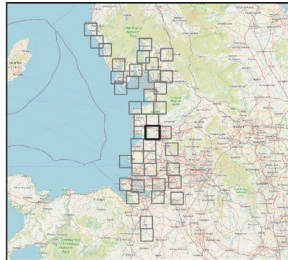
- Negligible potential
- Low potential
- Moderate potential
- High potential
- Special Protection Area (SPA)

LCM15 Habitat Layer (CEH) - suitable habitat for water birds

- Arable and horticulture
- Improved grassland

© Natural England 2021
 © OpenStreetMap contributors 2021

All data sources used to produce these maps and licencing information can be found in Appendix 1 of the Functionally Linked Land Project Report.



Legend

Functionally Linked Land:

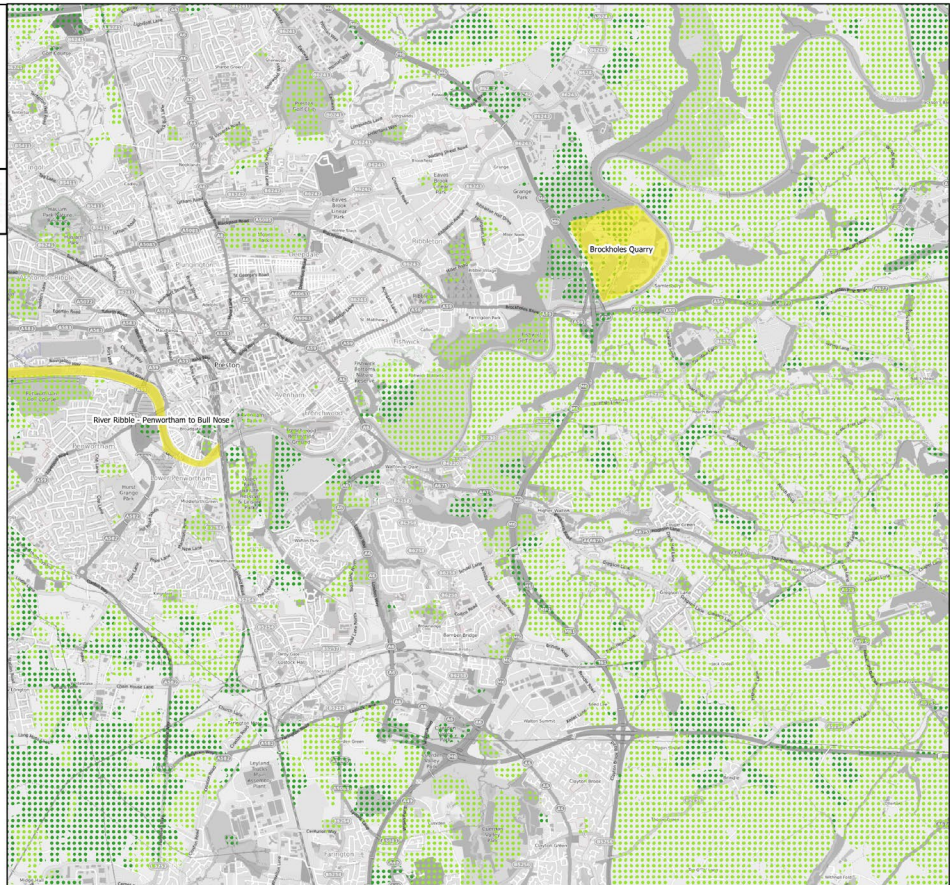
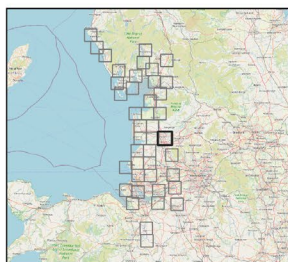
- Negligible potential
- Low potential
- Moderate potential
- High potential
- Special Protection Area (SPA)

LCM15 Habitat Layer (CEH) - suitable habitat for water birds

- Arable and horticulture
- Improved grassland

© Natural England 2021
 © OpenStreetMap contributors 2021

All data sources used to produce these maps and licencing information can be found in Appendix 1 of the Functionally Linked Land Project Report.



Drawn by: LB
Checked by: HD
Date: 05.05.2021



Legend

Functionally Linked Land:

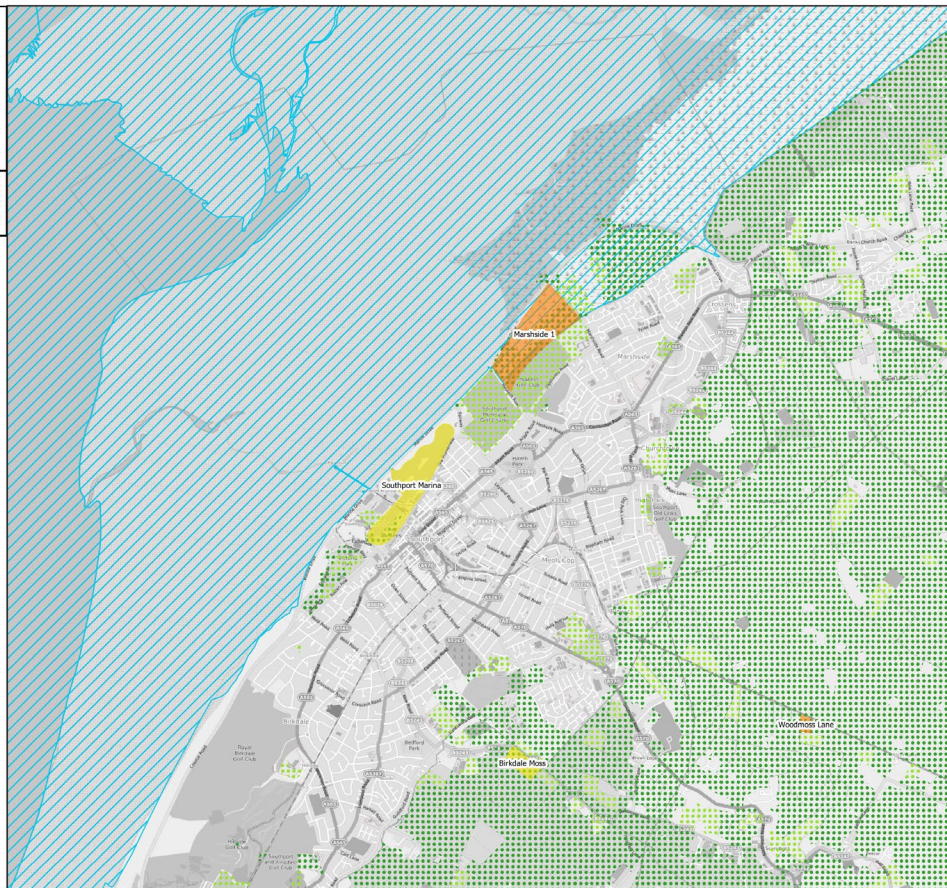
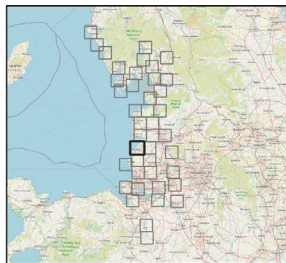
- Negligible potential
- Low potential
- Moderate potential
- High potential
- Special Protection Area (SPA)

LCM15 Habitat Layer (CEH) - suitable habitat for water birds

- Arable and horticulture
- Improved grassland

© Natural England 2021
© OpenStreetMap contributors 2021

All data sources used to produce these maps and licencing information can be found in Appendix 1 of the Functionally Linked Land Project Report.



Drawn by: LB
Checked by: HD
Date: 05.05.2021



Legend

Functionally Linked Land:

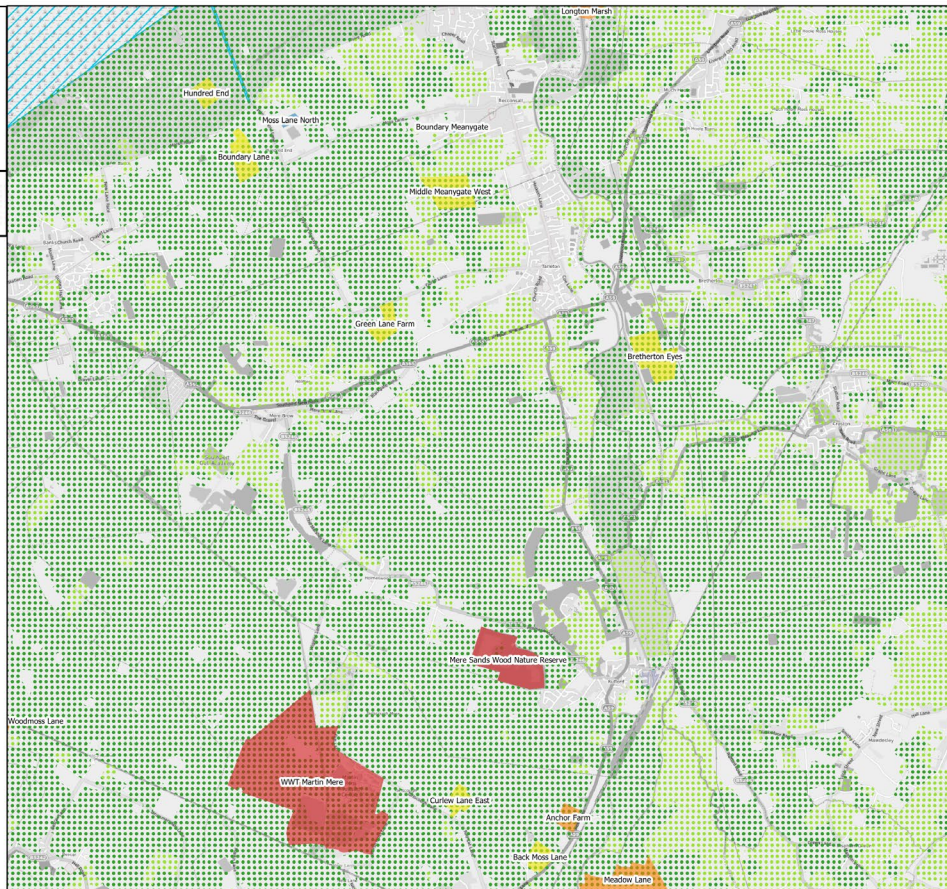
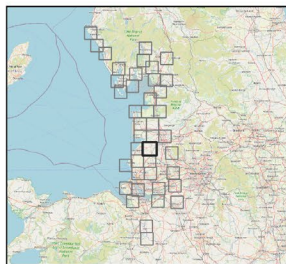
- Negligible potential
- Low potential
- Moderate potential
- High potential
- Special Protection Area (SPA)

LCM15 Habitat Layer (CEH) - suitable habitat for water birds

- Arable and horticulture
- Improved grassland

© Natural England 2021
© OpenStreetMap contributors 2021

All data sources used to produce these maps and licencing information can be found in Appendix 1 of the Functionally Linked Land Project Report.



Drawn by: LB
Checked by: HD
Date: 05.05.2021



Legend

Functionally Linked Land:

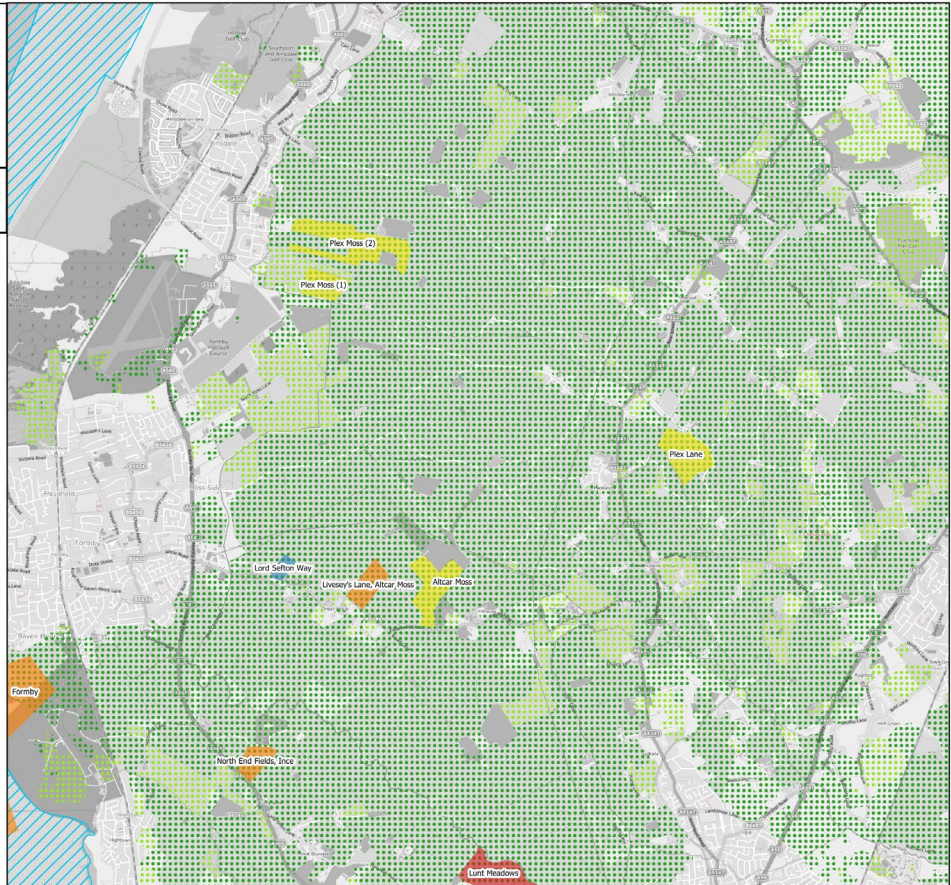
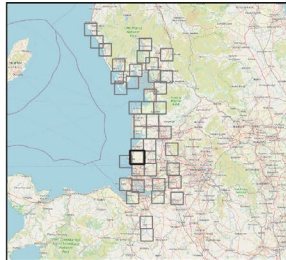
- Negligible potential
- Low potential
- Moderate potential
- High potential
- Special Protection Area (SPA)

LCM15 Habitat Layer (CEH) - suitable habitat for water birds

- Arable and horticulture
- Improved grassland

© Natural England 2021
© OpenStreetMap contributors 2021

All data sources used to produce these maps and licencing information can be found in Appendix 1 of the Functionally Linked Land Project Report.



Drawn by: LB
Checked by: HD
Date: 05.05.2021



Legend

Functionally Linked Land:

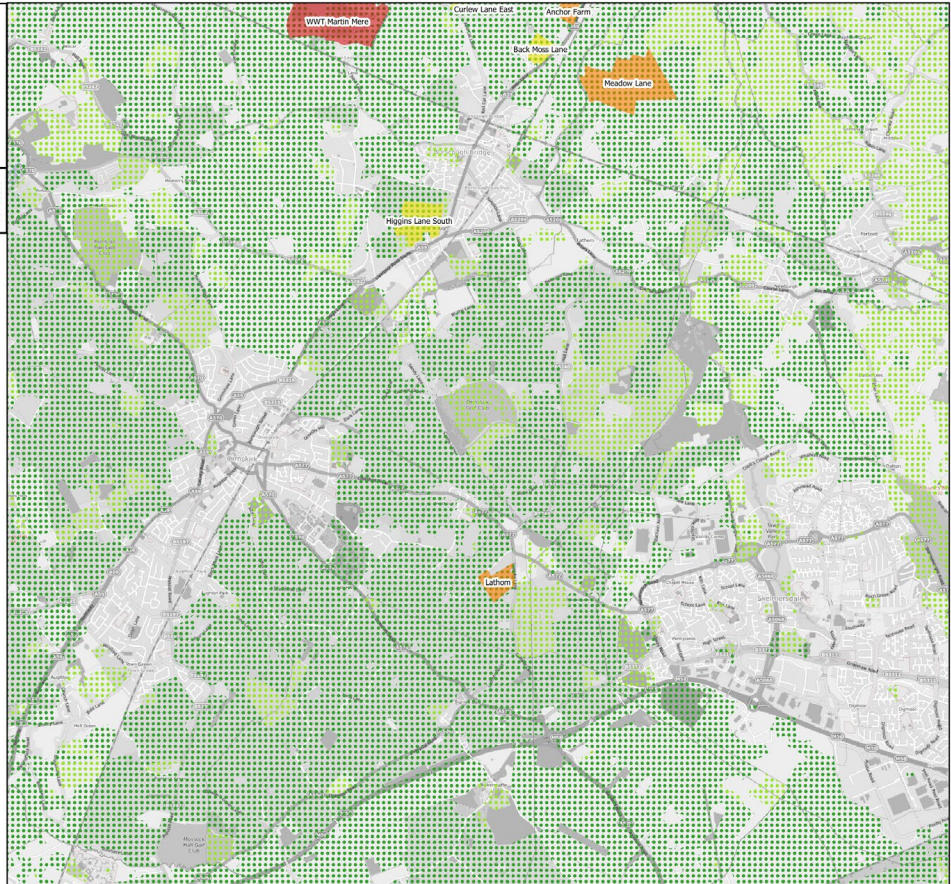
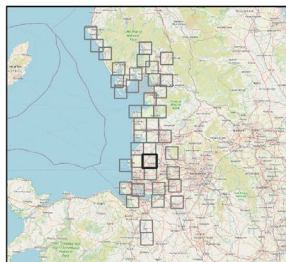
- Negligible potential
- Low potential
- Moderate potential
- High potential
- Special Protection Area (SPA)

LCM15 Habitat Layer (CEH) - suitable habitat for water birds

- Arable and horticulture
- Improved grassland

© Natural England 2021
© OpenStreetMap contributors 2021

All data sources used to produce these maps and licencing information can be found in Appendix 1 of the Functionally Linked Land Project Report.



BOW17/1209 Natural England Functionally Linked Land (FLL) Project
 Drawing title: Final FLL Plans
 Page 29 of 42

Drawn by: LB
 Checked by: HD
 Date: 05.05.2021



Legend

Functionally Linked Land:

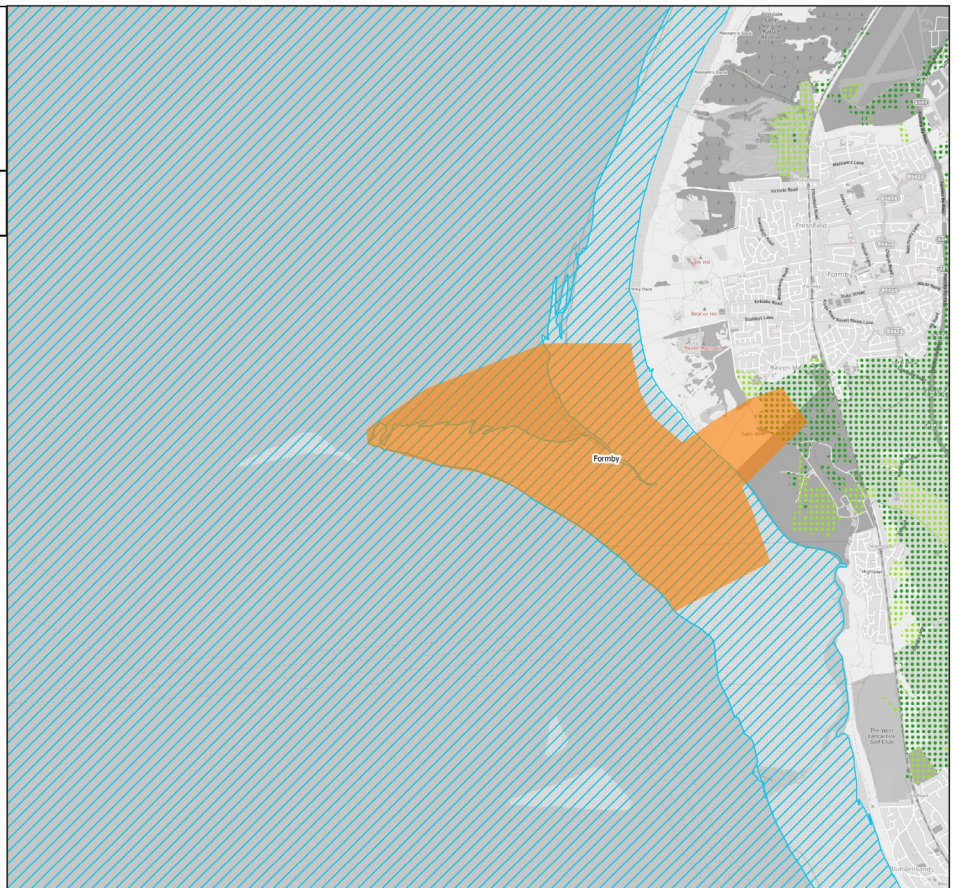
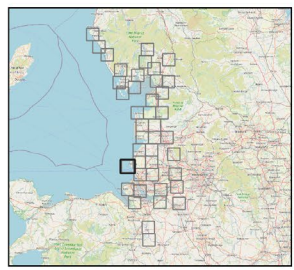
- Negligible potential
- Low potential
- Moderate potential
- High potential
- Special Protection Area (SPA)

LCM15 Habitat Layer (CEH) - suitable habitat for water birds

- Arable and horticulture
- Improved grassland

© Natural England 2021
 © OpenStreetMap contributors 2021

All data sources used to produce these maps and licencing information can be found in Appendix 1 of the Functionally Linked Land Project Report.



BOW17/1209 Natural England Functionally Linked Land (FLL) Project
 Drawing title: Final FLL Plans
 Page 30 of 42

Drawn by: LB
 Checked by: HD
 Date: 05.05.2021



Legend

Functionally Linked Land:

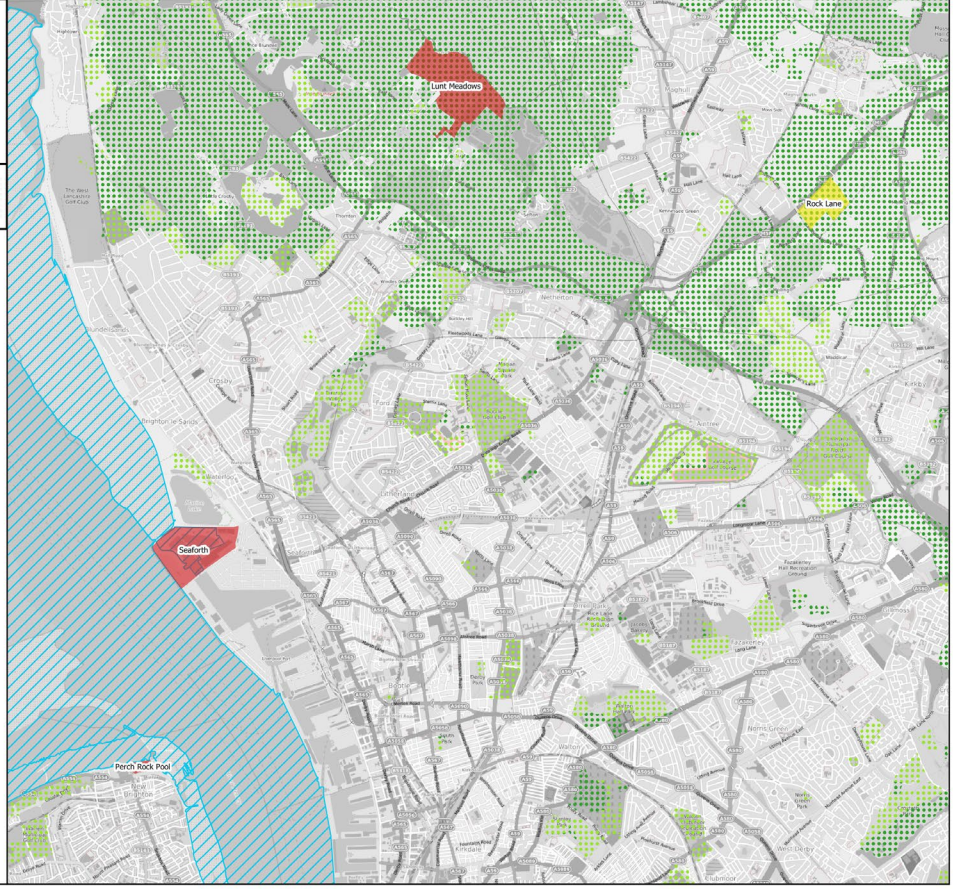
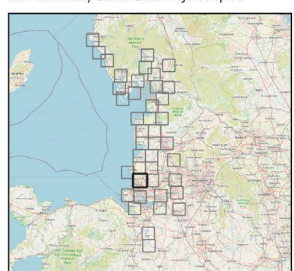
- Negligible potential
- Low potential
- Moderate potential
- High potential
- Special Protection Area (SPA)

LCM15 Habitat Layer (CEH) - suitable habitat for water birds

- Arable and horticulture
- Improved grassland

© Natural England 2021
 © OpenStreetMap contributors 2021

All data sources used to produce these maps and licencing information can be found in Appendix 1 of the Functionally Linked Land Project Report.



Drawn by: LB
Checked by: HD
Date: 05.05.2021



Legend

Functionally Linked Land:

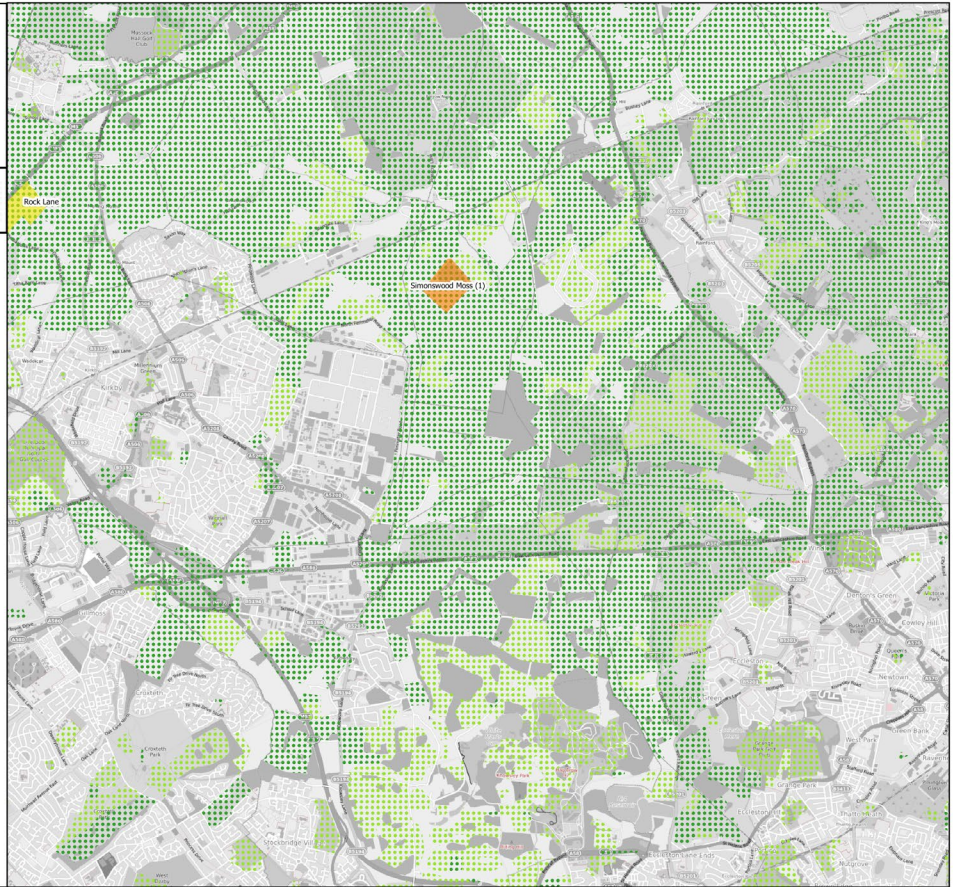
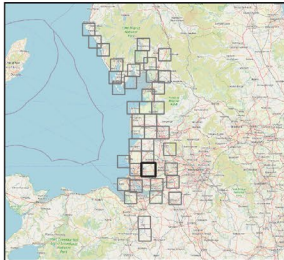
- Negligible potential
- Low potential
- Moderate potential
- High potential
- Special Protection Area (SPA)

LCM15 Habitat Layer (CEH) - suitable habitat for water birds

- Arable and horticulture
- Improved grassland

© Natural England 2021
© OpenStreetMap contributors 2021

All data sources used to produce these maps and licencing information can be found in Appendix 1 of the Functionally Linked Land Project Report.



Drawn by: LB
Checked by: HD
Date: 05.05.2021



Legend

Functionally Linked Land:

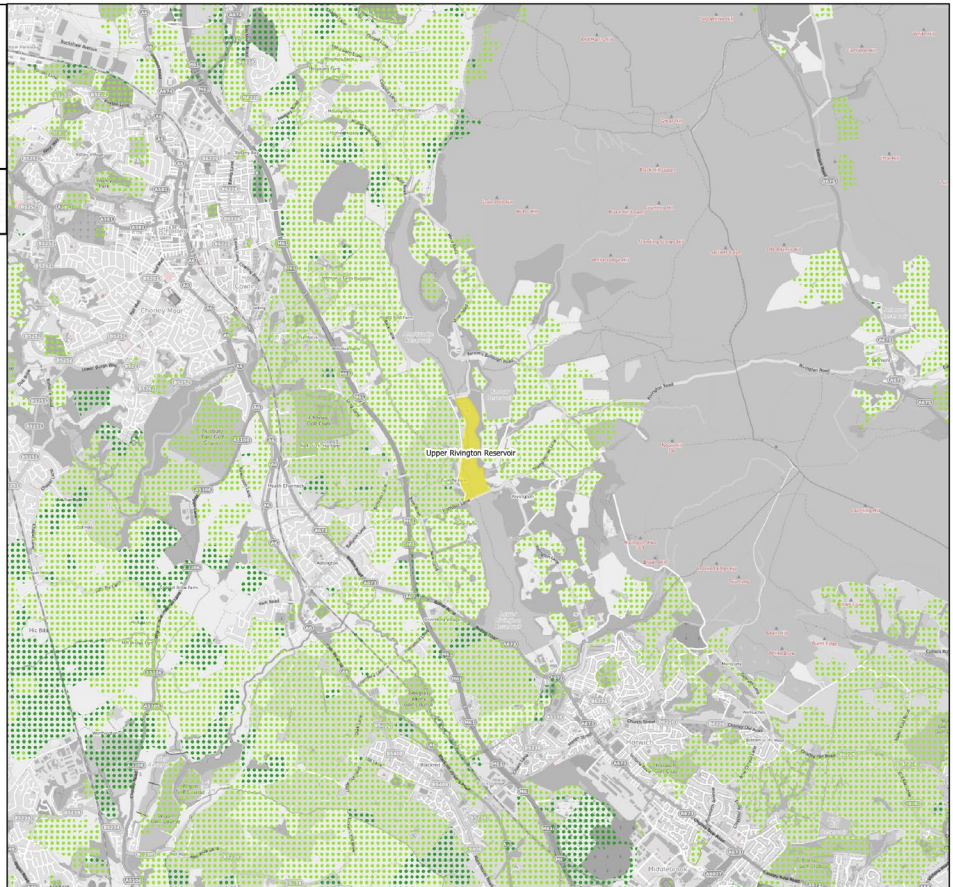
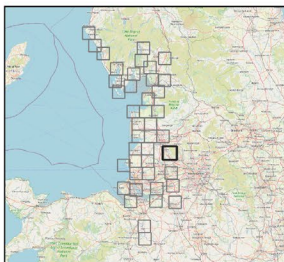
- Negligible potential
- Low potential
- Moderate potential
- High potential
- Special Protection Area (SPA)

LCM15 Habitat Layer (CEH) - suitable habitat for water birds

- Arable and horticulture
- Improved grassland

© Natural England 2021
© OpenStreetMap contributors 2021

All data sources used to produce these maps and licencing information can be found in Appendix 1 of the Functionally Linked Land Project Report.



Drawn by: LB
Checked by: HD
Date: 05.05.2021



Legend

Functionally Linked Land:

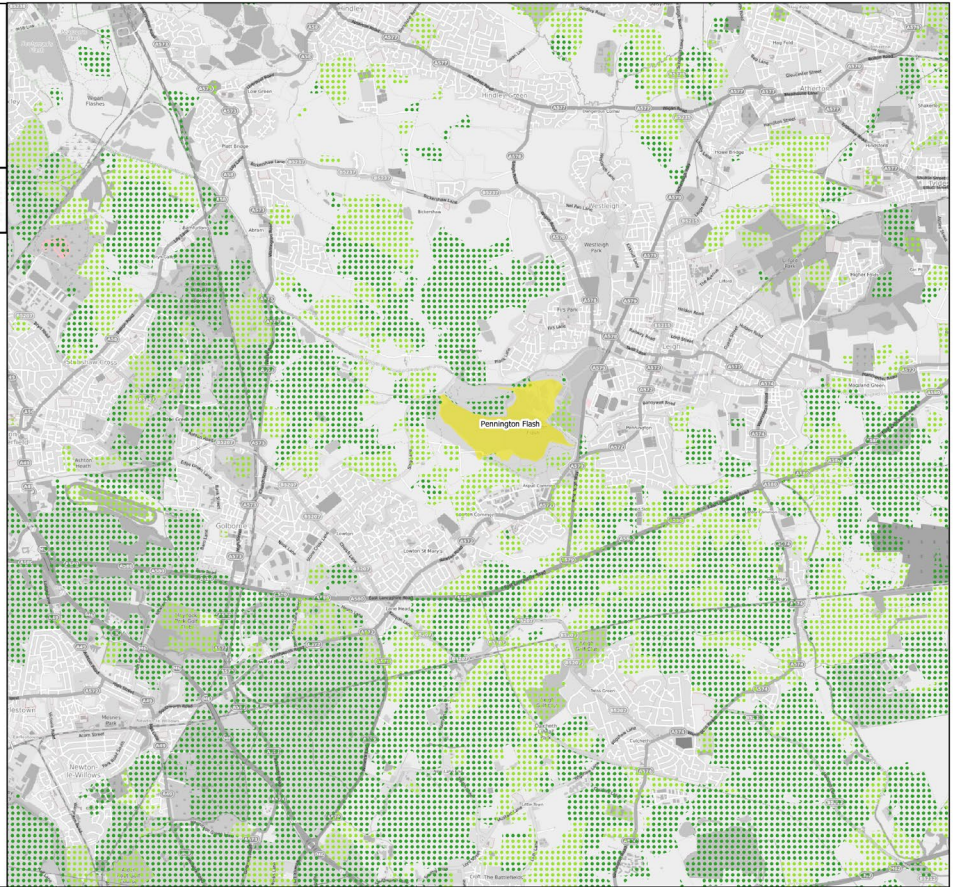
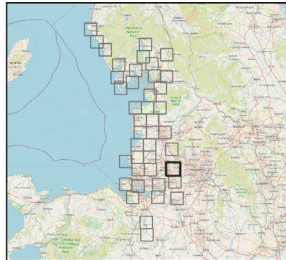
- Negligible potential
- Low potential
- Moderate potential
- High potential
- Special Protection Area (SPA)

LCM15 Habitat Layer (CEH) - suitable habitat for water birds

- Arable and horticulture
- Improved grassland

© Natural England 2021
© OpenStreetMap contributors 2021

All data sources used to produce these maps and licencing information can be found in Appendix 1 of the Functionally Linked Land Project Report.



Drawn by: LB
Checked by: HD
Date: 05.05.2021



Legend

Functionally Linked Land:

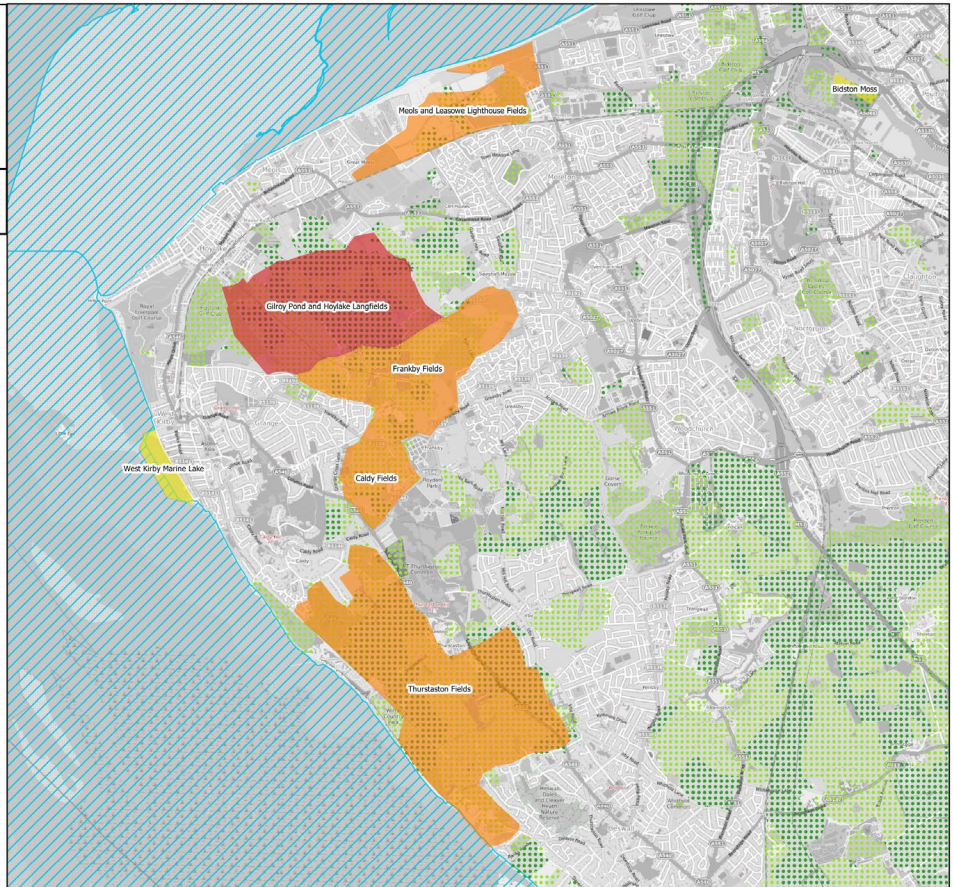
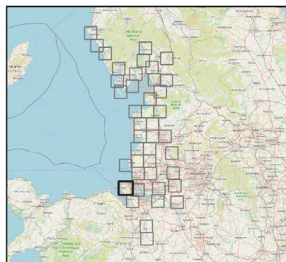
- Negligible potential
- Low potential
- Moderate potential
- High potential
- Special Protection Area (SPA)

LCM15 Habitat Layer (CEH) - suitable habitat for water birds

- Arable and horticulture
- Improved grassland

© Natural England 2021
© OpenStreetMap contributors 2021

All data sources used to produce these maps and licencing information can be found in Appendix 1 of the Functionally Linked Land Project Report.



Drawn by: LB
Checked by: HD
Date: 05.05.2021



Legend

Functionally Linked Land:

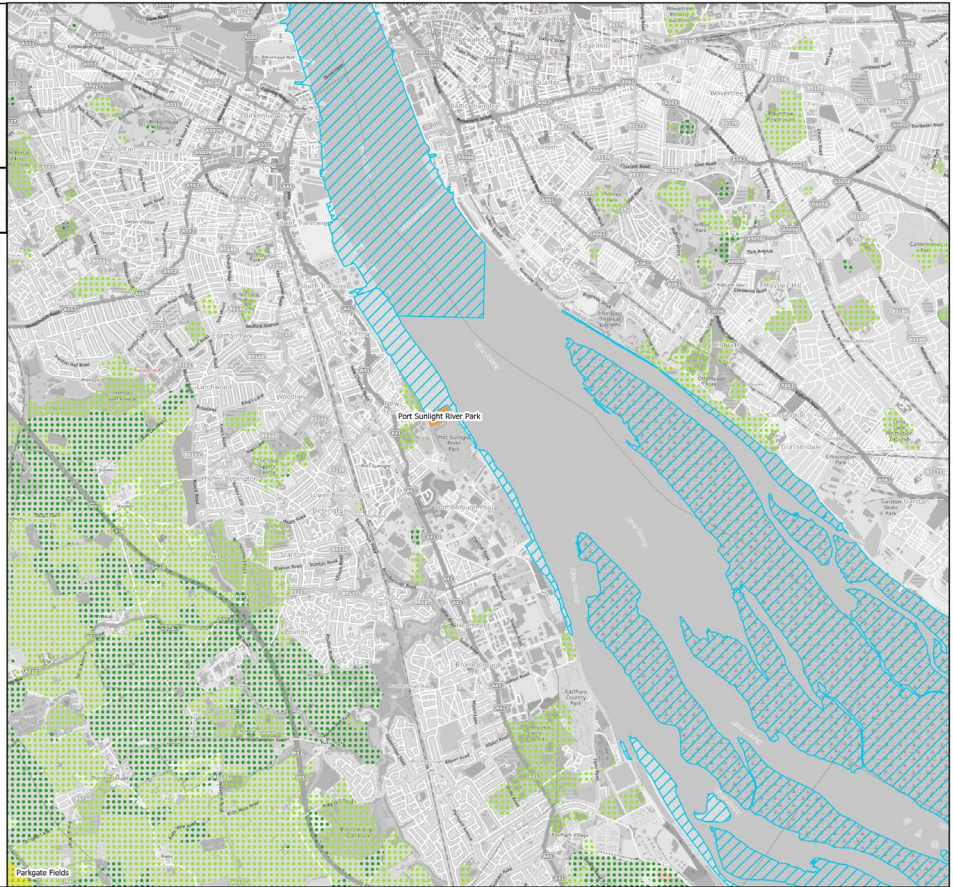
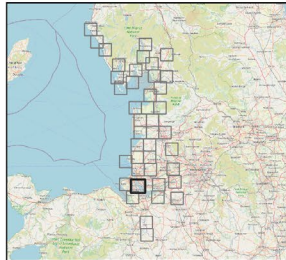
- Negligible potential
- Low potential
- Moderate potential
- High potential
- Special Protection Area (SPA)

LCM15 Habitat Layer (CEH) - suitable habitat for water birds

- Arable and horticulture
- Improved grassland

© Natural England 2021
© OpenStreetMap contributors 2021

All data sources used to produce these maps and licencing information can be found in Appendix 1 of the Functionally Linked Land Project Report.



Drawn by: LB
Checked by: HD
Date: 05.05.2021



Legend

Functionally Linked Land:

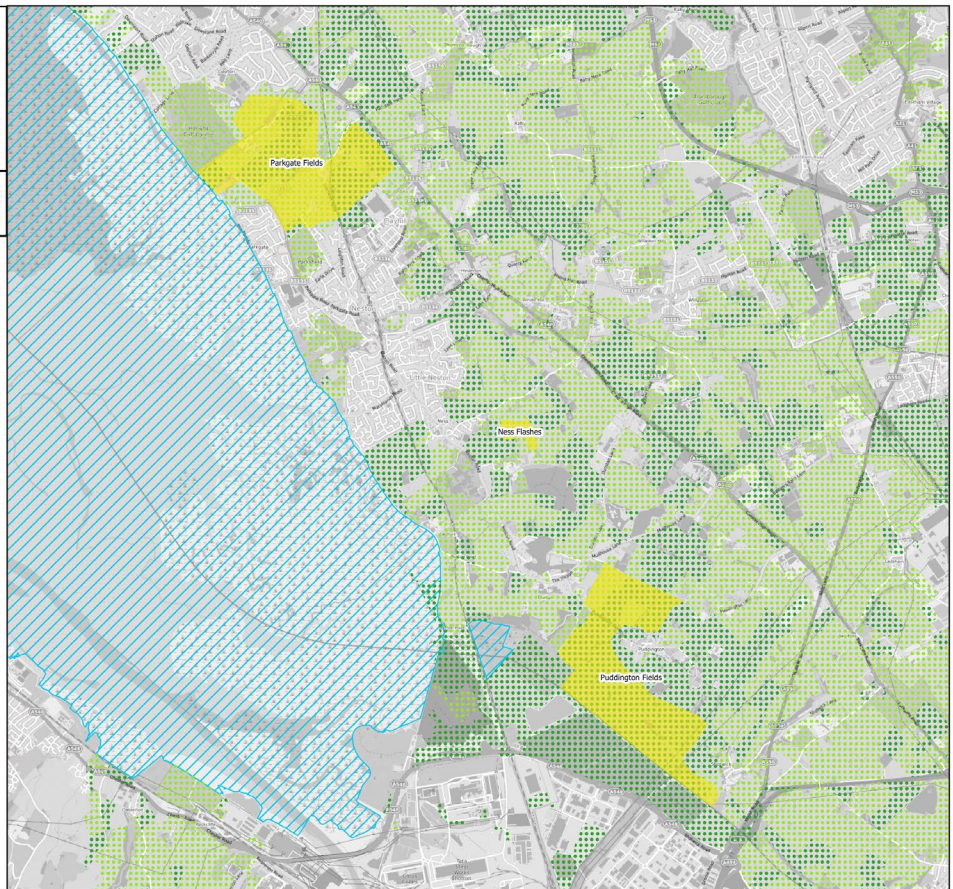
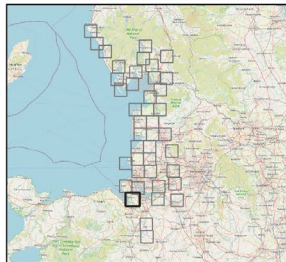
- Negligible potential
- Low potential
- Moderate potential
- High potential
- Special Protection Area (SPA)

LCM15 Habitat Layer (CEH) - suitable habitat for water birds

- Arable and horticulture
- Improved grassland

© Natural England 2021
© OpenStreetMap contributors 2021

All data sources used to produce these maps and licencing information can be found in Appendix 1 of the Functionally Linked Land Project Report.



Drawn by: LB
 Checked by: HD
 Date: 05.05.2021



Legend

Functionally Linked Land:

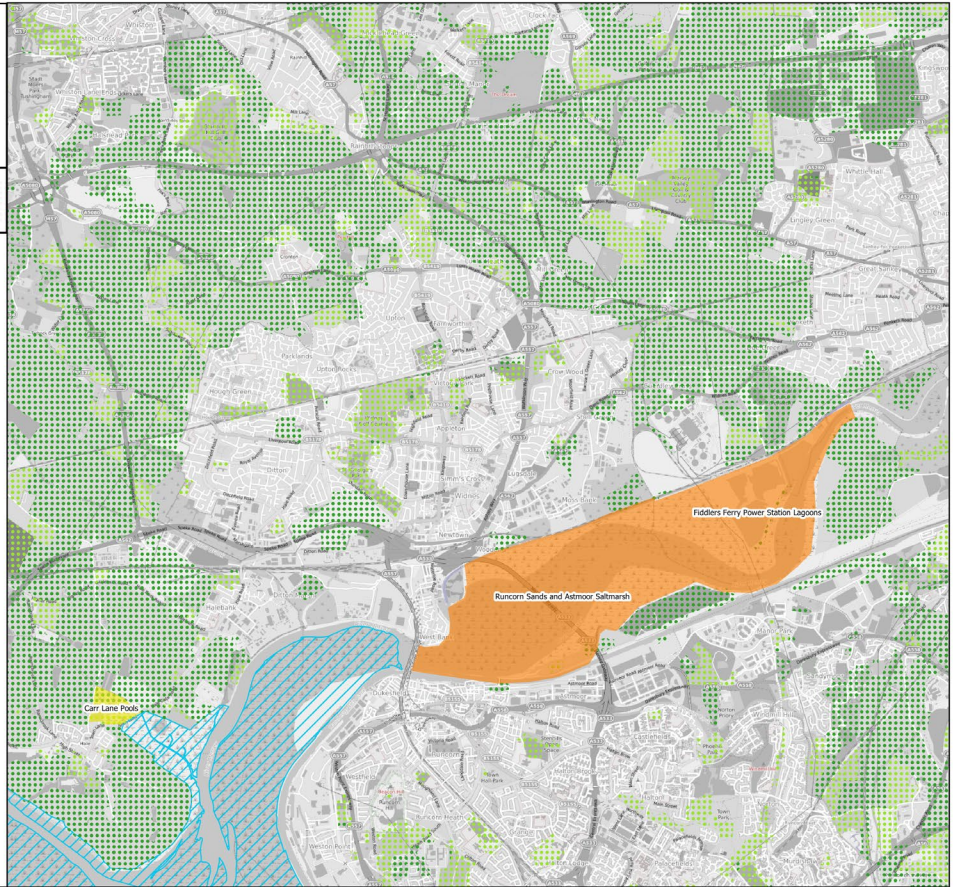
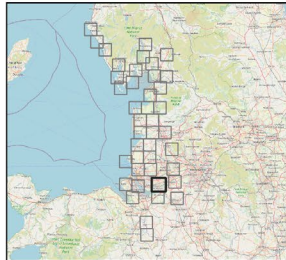
- Negligible potential
- Low potential
- Moderate potential
- High potential
- Special Protection Area (SPA)

LCM15 Habitat Layer (CEH) - suitable habitat for water birds

- Arable and horticulture
- Improved grassland

© Natural England 2021
 © OpenStreetMap contributors 2021

All data sources used to produce these maps and licencing information can be found in Appendix 1 of the Functionally Linked Land Project Report.



Drawn by: LB
 Checked by: HD
 Date: 05.05.2021



Legend

Functionally Linked Land:

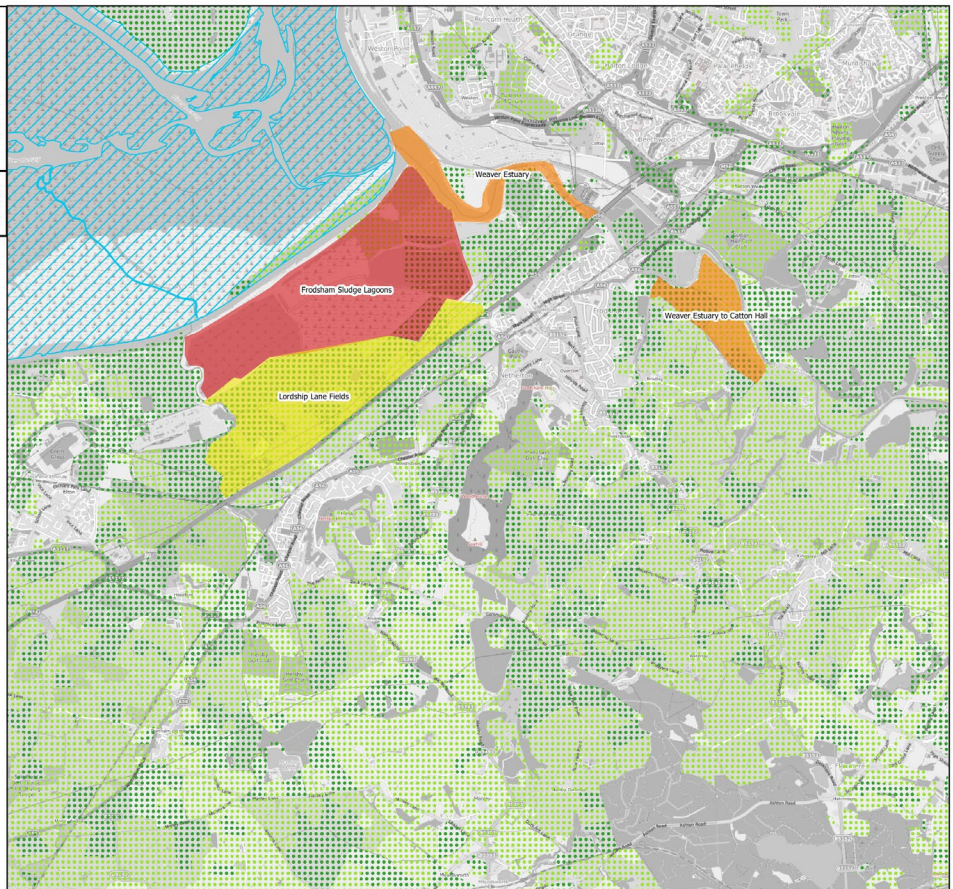
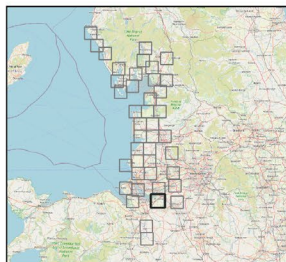
- Negligible potential
- Low potential
- Moderate potential
- High potential
- Special Protection Area (SPA)

LCM15 Habitat Layer (CEH) - suitable habitat for water birds

- Arable and horticulture
- Improved grassland

© Natural England 2021
 © OpenStreetMap contributors 2021

All data sources used to produce these maps and licencing information can be found in Appendix 1 of the Functionally Linked Land Project Report.



Legend

Functionally Linked Land:

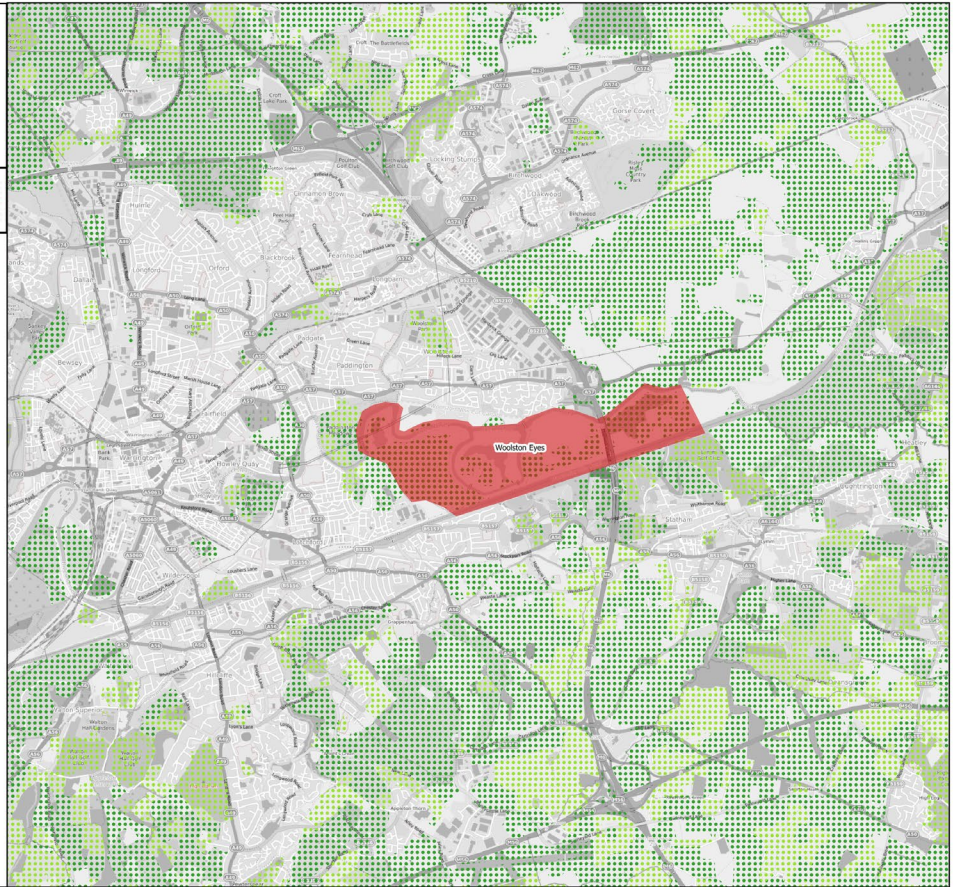
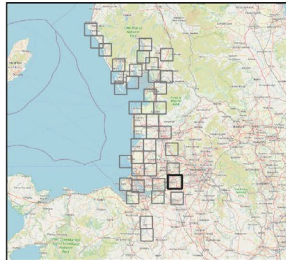
- Negligible potential
- Low potential
- Moderate potential
- High potential
- Special Protection Area (SPA)

LCM15 Habitat Layer (CEH) - suitable habitat for water birds

- Arable and horticulture
- Improved grassland

© Natural England 2021
© OpenStreetMap contributors 2021

All data sources used to produce these maps and licencing information can be found in Appendix 1 of the Functionally Linked Land Project Report.



Legend

Functionally Linked Land:

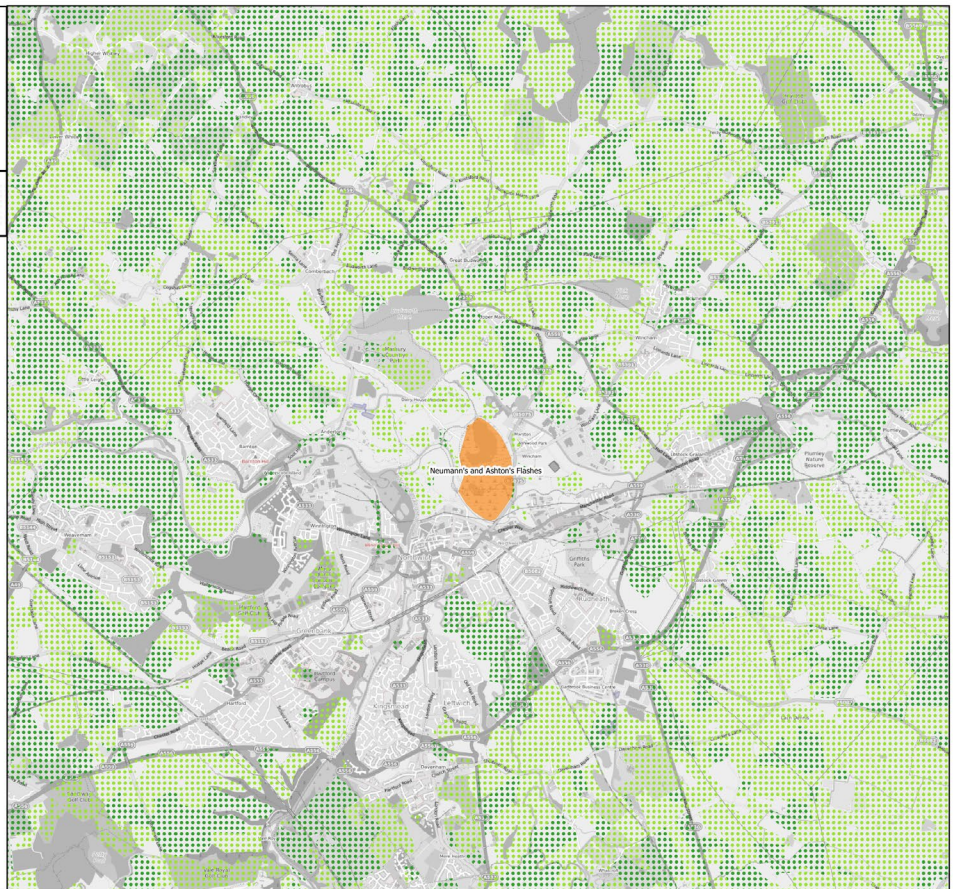
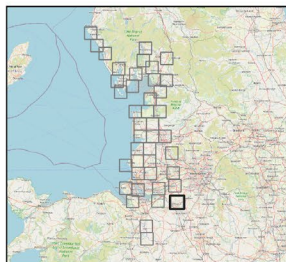
- Negligible potential
- Low potential
- Moderate potential
- High potential
- Special Protection Area (SPA)

LCM15 Habitat Layer (CEH) - suitable habitat for water birds

- Arable and horticulture
- Improved grassland

© Natural England 2021
© OpenStreetMap contributors 2021

All data sources used to produce these maps and licencing information can be found in Appendix 1 of the Functionally Linked Land Project Report.



Legend

Functionally Linked Land:

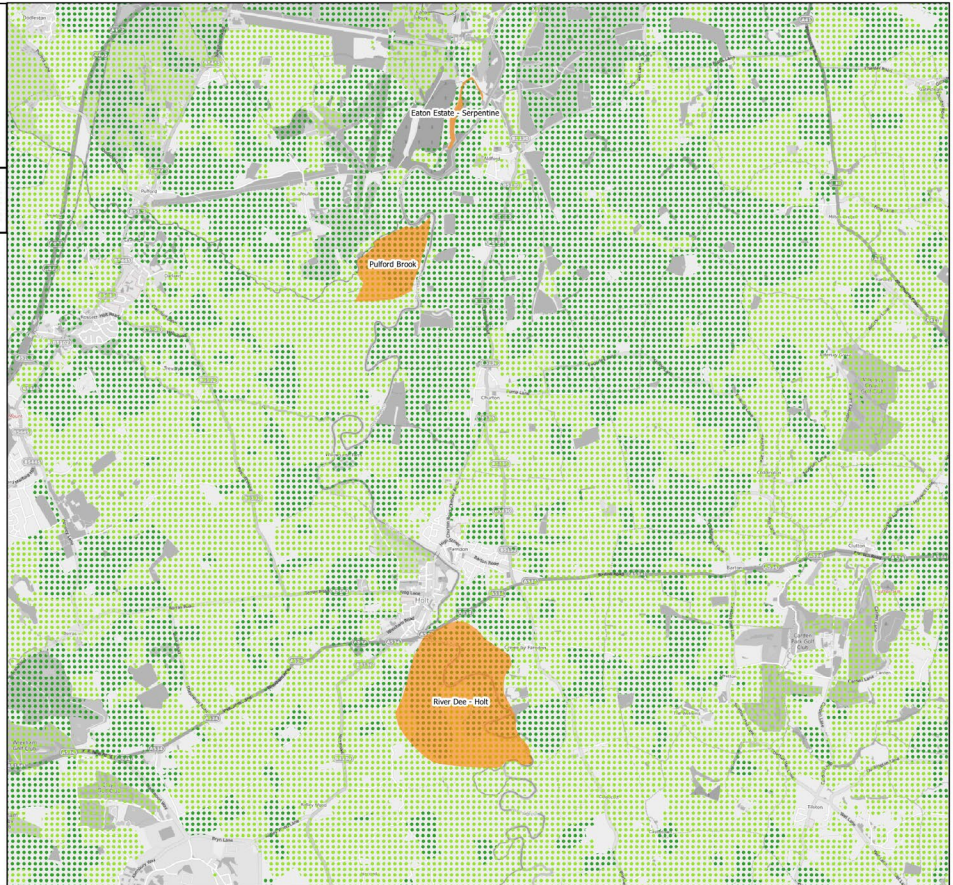
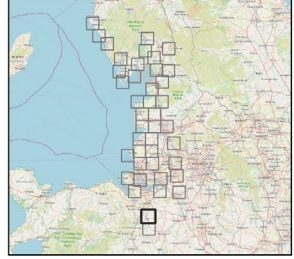
- Negligible potential
- Low potential
- Moderate potential
- High potential
- Special Protection Area (SPA)

LCM15 Habitat Layer (CEH) - suitable habitat for water birds

- Arable and horticulture
- Improved grassland

© Natural England 2021
 © OpenStreetMap contributors 2021

All data sources used to produce these maps and licencing information can be found in Appendix 1 of the Functionally Linked Land Project Report.



Legend

Functionally Linked Land:

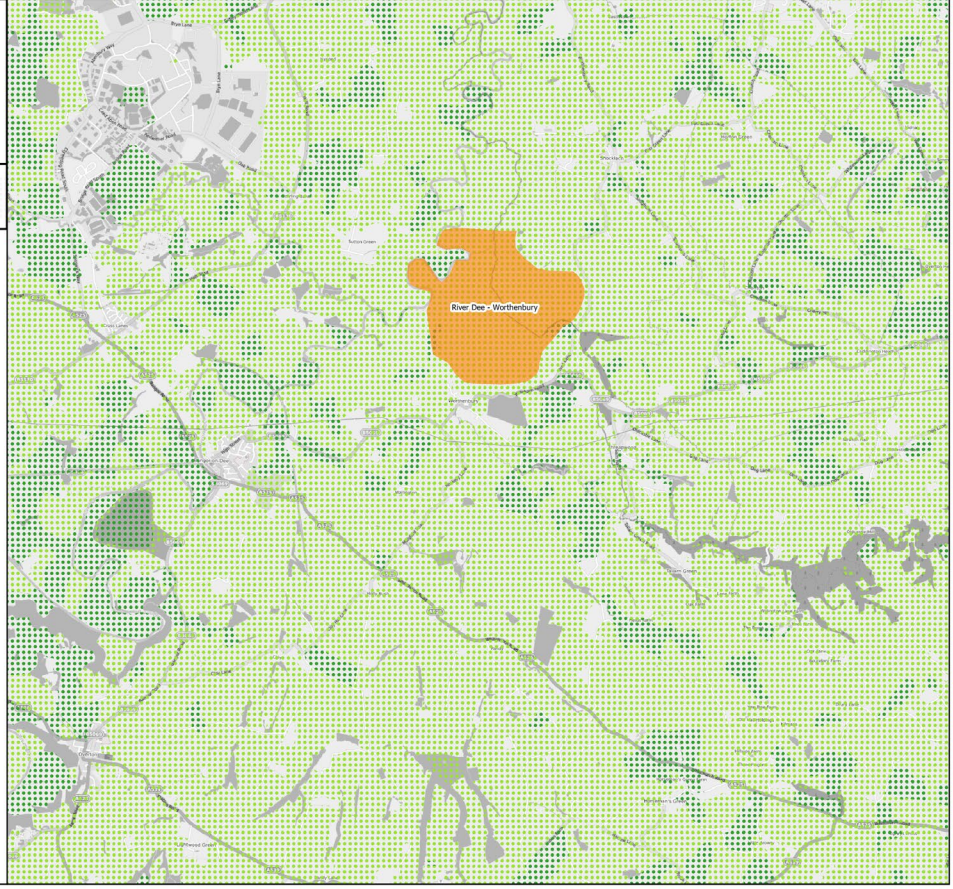
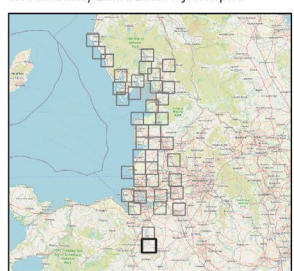
- Negligible potential
- Low potential
- Moderate potential
- High potential
- Special Protection Area (SPA)

LCM15 Habitat Layer (CEH) - suitable habitat for water birds

- Arable and horticulture
- Improved grassland

© Natural England 2021
 © OpenStreetMap contributors 2021

All data sources used to produce these maps and licencing information can be found in Appendix 1 of the Functionally Linked Land Project Report.



Natural England is here to secure a healthy natural environment for people to enjoy, where wildlife is protected and England's traditional landscapes are safeguarded for future generations.

Natural England publications are available as accessible pdfs from www.gov.uk/natural-england.

Should an alternative format of this publication be required, please contact our enquiries line for more information: 0300 060 3900 or email enquiries@naturalengland.org.uk.

ISBN 978-1-78354-885-9

Catalogue code: NECR361

This publication is published by Natural England under the Open Government Licence v3.0 for public sector information. You are encouraged to use, and reuse, information subject to certain conditions. For details of the licence visit www.nationalarchives.gov.uk/doc/open-government-licence/version/3.

Please note: Natural England photographs are only available for non-commercial purposes. For information regarding the use of maps or data visit www.gov.uk/how-to-access-natural-englands-maps-and-data.

© Natural England 2021