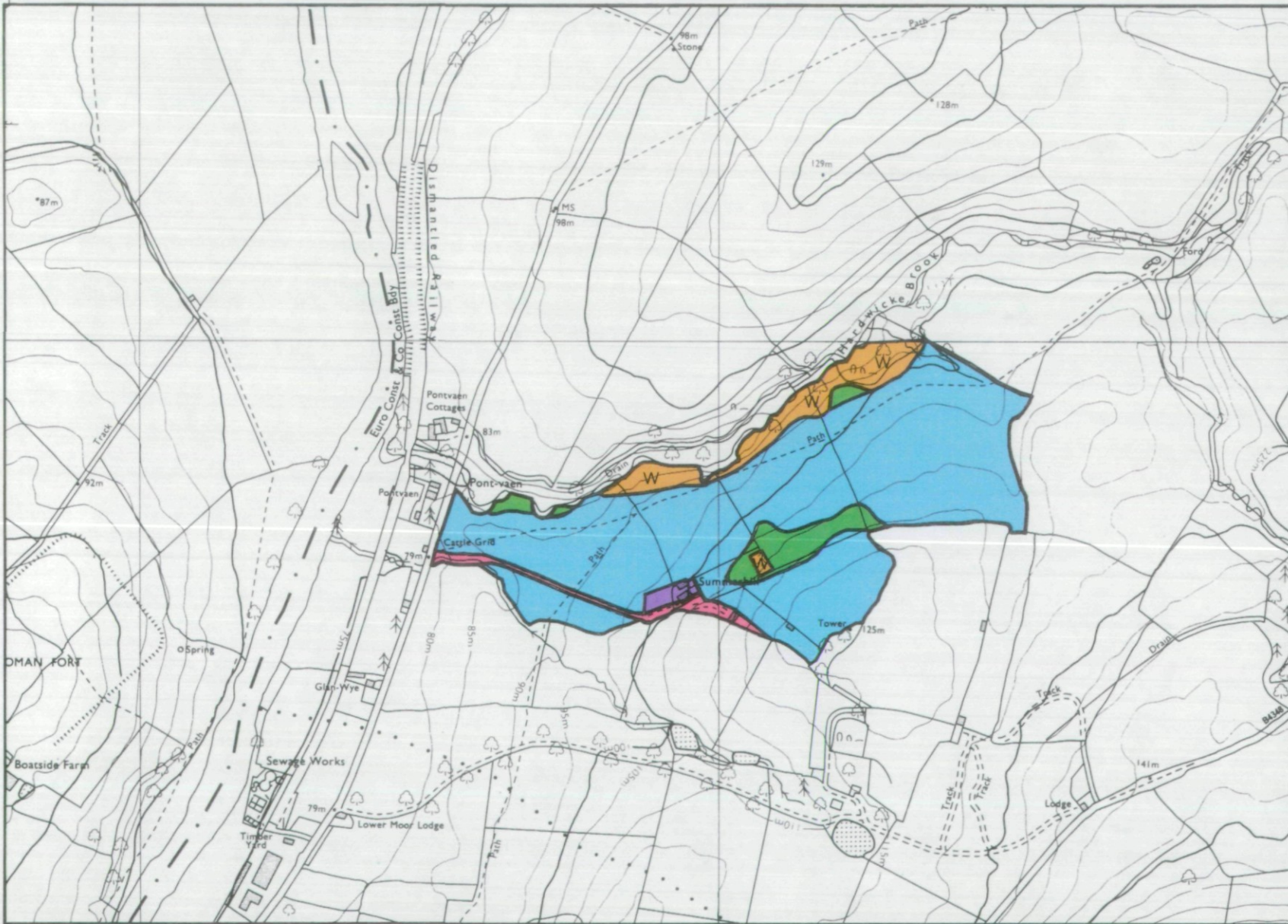


AGRICULTURAL LAND CLASSIFICATION

PROPOSED GOLF COURSE DEVELOPMENT AT SUMMERHILL FARM, HAY ON WYE



AGRICULTURAL LAND GRADE	LAND QUALITY
1	EXCELLENT
2	
3a	
3b	MODERATE
4	
5	VERY POOR

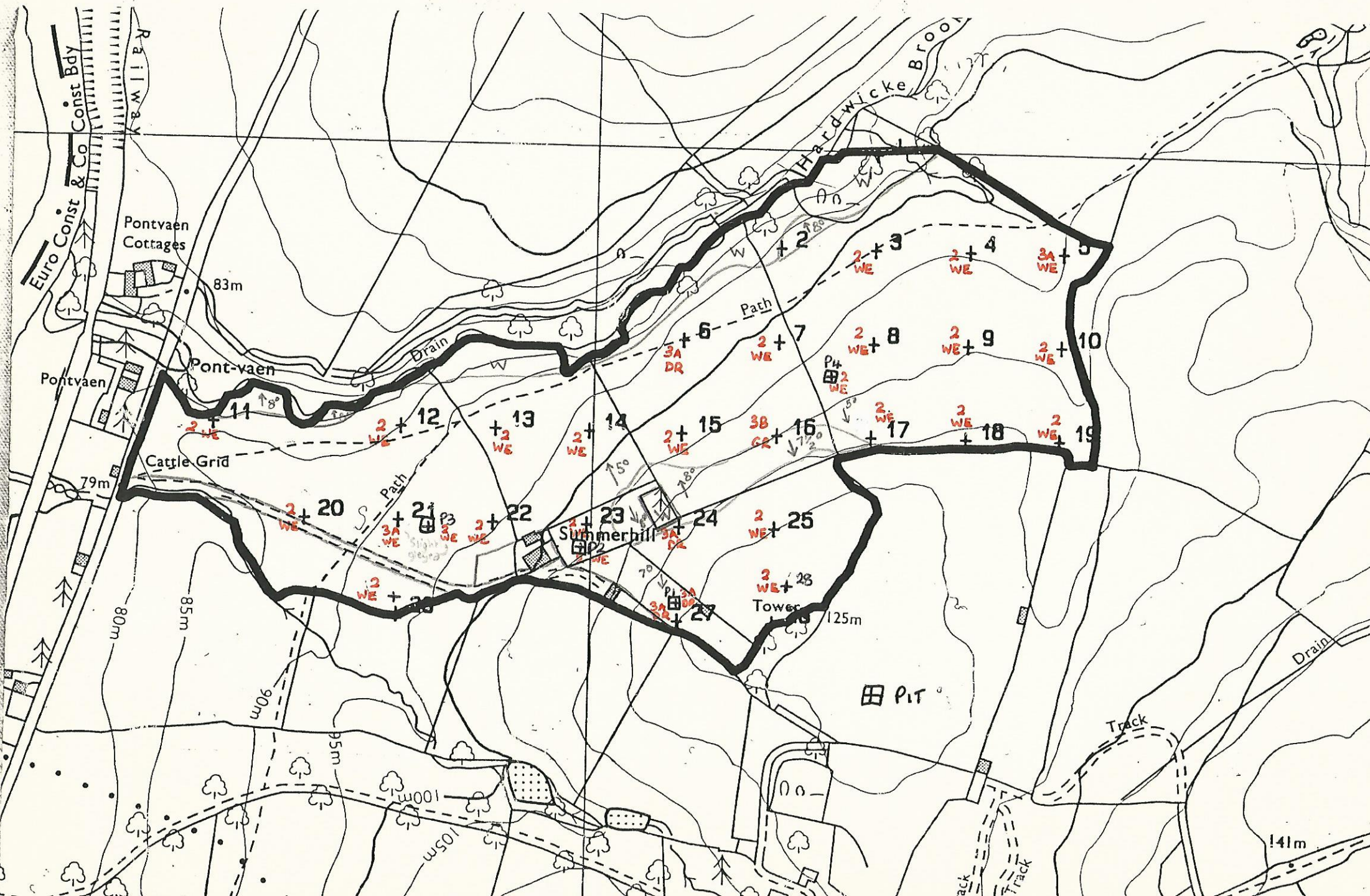
NON-AGRICULTURAL LAND	
LAND PREDOMINANTLY IN URBAN USE	
OTHER LAND PRIMARILY IN NON-AGRICULTURAL USE	
WOODLAND	
AGRICULTURAL BUILDINGS	
OPEN WATER	
LAND NOT SURVEYED	

* INDICATES GRADES NOT MAPPED WITHIN THIS SITE

STATISTICS	
Site Area	28.40ha
Agricultural Land Area	24.74ha
PERCENTAGE OF EACH GRADE	

SCALE 1:10000	
0 200 400 metres	
Surveyed by Resource Planning Team	
File No. 4FCS RPG	
Date	June 92
Job No.	19/92
Map Produced by The Cartographic Unit, Wolverhampton Statutory Unit.	





Euro Const & Co Const Bdy

Pontvaen Cottages

83m

Pont-vaen

Cattle Grid

79m

80m

85m

90m

95m

100m

105m

125m

141m

Hardwicke Brook

Drain

Drain

Summerhill

Tower

PIT

11

12

13

14

15

16

17

18

19

20

21

22

23

24

25

26

27

28

2

3

4

5

6

7

8

9

10

3A DR

P4 2 WE

3B GR

2 WE

2 WE

2 WE

2 WE

2 WE

2 WE

2 WE

2 WE

2 WE

3A WE

3 WE

3 WE

3A DR

2 WE

2 WE

3A WE

3 WE

3A DR

3A DR

2 WE

2 WE

2 WE

2 WE

2 WE

2 WE

2 WE

3A WE

2 WE

2 WE

2 WE

2 WE

2 WE

3A DR

P4 2 WE

3B GR

2 WE

2 WE

2 WE

2 WE

2 WE

2 WE

2 WE

2 WE

2 WE

3A WE

3 WE

3 WE

3A DR

2 WE

2 WE

3A WE

3 WE

3A DR

3A DR

2 WE

2 WE

2 WE

2 WE

2 WE

2 WE

2 WE

3A WE

2 WE

2 WE

2 WE

2 WE

2 WE

3A DR

P4 2 WE

3B GR

2 WE

2 WE

2 WE

2 WE

2 WE

2 WE

2 WE

2 WE

2 WE

3A WE

3 WE

3 WE

3A DR

2 WE

2 WE

3A WE

3 WE

3A DR

3A DR

2 WE

2 WE

2 WE

2 WE

2 WE

2 WE

2 WE

3A WE

2 WE

2 WE

2 WE

2 WE

2 WE

3A DR

P4 2 WE

3B GR

2 WE

2 WE

2 WE

2 WE

2 WE

2 WE

2 WE

2 WE

2 WE

3A WE

3 WE

3 WE

3A DR

2 WE

2 WE

3A WE

3 WE

3A DR

3A DR

2 WE

2 WE

2 WE

2 WE

2 WE

2 WE

2 WE

3A WE

2 WE

2 WE

2 WE

2 WE

2 WE

3A DR

P4 2 WE

3B GR

2 WE

2 WE

2 WE

2 WE

2 WE

2 WE

2 WE

2 WE

2 WE

3A WE

3 WE

3 WE

3A DR

2 WE

2 WE

3A WE

3 WE

3A DR

3A DR

2 WE

2 WE

2 WE

2 WE

2 WE

2 WE

2 WE

3A WE

2 WE

2 WE

2 WE

2 WE

2 WE

3A DR

P4 2 WE

3B GR

2 WE

2 WE

2 WE

2 WE

2 WE

2 WE

2 WE

2 WE

2 WE

3A WE

3 WE

3 WE

3A DR

2 WE

2 WE

3A WE

3 WE

3A DR

3A DR

2 WE

2 WE

2 WE

2 WE

2 WE

2 WE

2 WE

3A WE

2 WE

2 WE

2 WE

2 WE

2 WE

3A DR

P4 2 WE

3B GR

2 WE

2 WE

2 WE

2 WE

2 WE

2 WE

2 WE

2 WE

2 WE

3A WE

3 WE

3 WE

3A DR

2 WE

2 WE

3A WE

3 WE

3A DR

3A DR

2 WE

2 WE

2 WE

2 WE

2 WE

2 WE

2 WE

3A WE

2 WE

2 WE

2 WE

2 WE

2 WE

3A DR

P4 2 WE

3B GR

2 WE

2 WE

2 WE

2 WE

2 WE

2 WE

2 WE

2 WE

2 WE

3A WE

3 WE

3 WE

3A DR

2 WE

2 WE

3A WE

3 WE

3A DR

3A DR

2 WE

2 WE

2 WE

2 WE

2 WE

2 WE

2 WE

3A WE

2 WE

2 WE

2 WE

2 WE

2 WE

3A DR

P4 2 WE

3B GR

2 WE

2 WE

2 WE

2 WE

2 WE

2 WE

2 WE

2 WE

2 WE

3A WE

3 WE

3 WE

3A DR

2 WE

2 WE