

## **Spatial Assessment of Benthic Compensatory Habitats for Offshore Wind Farm Impacts**

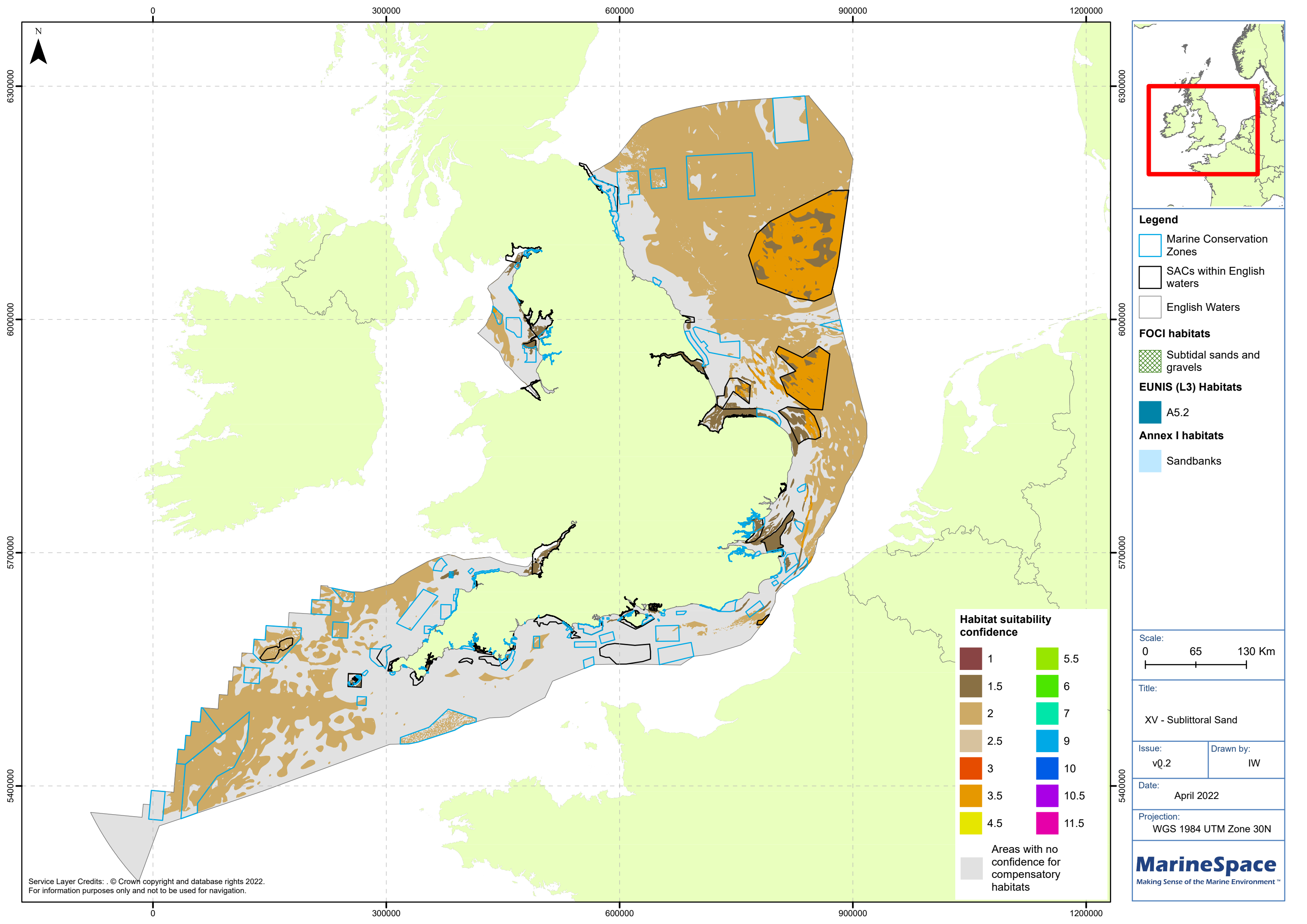
### **Appendix U Cluster XV Sublittoral Sand**

Produced on behalf of Natural England for commissioned report NECR433

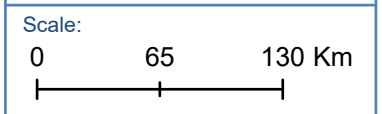
#### **Copyright:**

Contains JNCC, BGS and NRW data © copyright and database right 2017 and Defra data © Crown copyright and database right 2017

Contains JNCC data © copyright and database right 2019); NE Marine Habitats and Species Open data (© Natural England; © Agri-Food & Biosciences Institute; © Alwyne Wheeler; © Bamber, R.; © Bangor University; © Blue Marine Foundation; © Boat Owners' Response Group; Contains British Geological Survey materials © UKRI [2021]; © Centre for Environment, Fisheries and Aquaculture Sciences; © Channel Coastal Observatory; © Chichester Harbour Conservancy; © Colin Little; © Conchological Society of Great Britain and Ireland; © Cornwall Inshore Fisheries and Conservation Authority; © Cornwall Wildlife Trust; © Countryside Council for Wales; © Crown Estate; © Department for Environment, Food & Rural Affairs; © Derek Goodwin; © Devon and Severn Inshore Fisheries and Conservation Authority; © Dipper, F.; © Dorset Wildlife Trust; © Dove Marine Laboratory; © E Hunter; © E.J. Allen; © Eastern Inshore Fisheries & Conservation Authority; © Eneco; © Environment Agency; © Environmental Records Centre for Cornwall and the Isles of Scilly; © Falmouth Harbour Commissioners; © Field Studies Council; © Fowler, S.; © Hampshire and Isle of Wight Wildlife Trust; © Harwich Haven Authority; © Helford Marine Conservation Group; © Institute of Estuarine and Coastal Studies; © Institute of Petroleum; © Isles of Scilly Wildlife Trust; © Jean-Claude Dauvin; © Joint Nature Conservation Committee; © Jon Moore; © Kent & Medway Biological Records Centre; © Kent Wildlife Trust; © M.V. Robins; Contains Marine Aggregate Levy Sustainability Fund materials © Crown Copyright [2021]; © Marine Biological Association; © Marine Conservation Society; © Marine Institute Ireland; © Marine Scotland; © MARLIN; © National Power; © National Trust; © Natural History Museum; © Natural Resources Wales; © Natural Resources Wales ; © Nature Conservancy Council; © Newcastle University; © North West Water; © Orton, J.H.; © Plymouth Marine Laboratory; © Porcupine Marine Natural History Society; © Portsmouth University; © R Witbaard; © Scottish Environment Protection Agency; © Scottish Natural Heritage; © Seasearch; © Southern Water Services; © St Mawes Harbour Conservation Trust; © Tarmac Lefarge; © The Wildlife Trusts; © Tompsett, P.; © Unicomarine Ltd; © UNEP-WCMC, World Atlas of Seagrasses (2008). Cambridge (UK): UN Environment World Conservation Monitoring Centre. Latest version of Data at DOI: <https://doi.org/10.34892/x6r3-d211>; © University of Plymouth; © Welsh Water Authority; © Widdicombe, S.; © Wilson, P. & Wilson, P.)



- Legend**
- Marine Conservation Zones
  - SACs within English waters
  - English Waters
- FOCI habitats**
- Subtidal sands and gravels
- EUNIS (L3) Habitats**
- A5.2
- Annex I habitats**
- Sandbanks



Title:  
XV - Sublittoral Sand

Issue: v0.2	Drawn by: IW
----------------	-----------------

Date:  
April 2022

Projection:  
WGS 1984 UTM Zone 30N



Service Layer Credits: . © Crown copyright and database rights 2022.  
For information purposes only and not to be used for navigation.