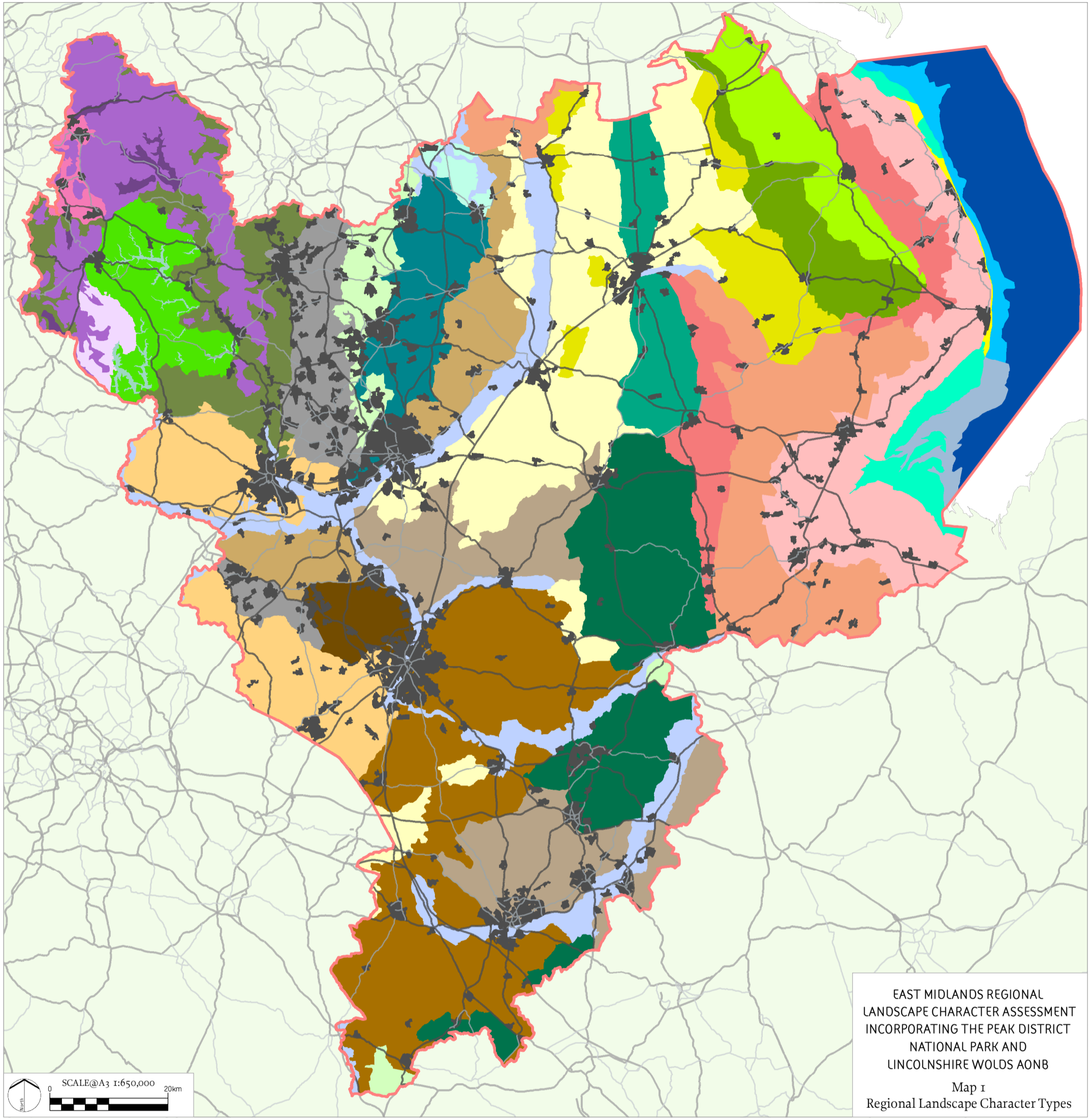


No dimensions are to be scaled from this drawing. All dimensions are to be checked on site. Area measurements for indicative purposes only.



EAST MIDLANDS REGIONAL  
LANDSCAPE CHARACTER ASSESSMENT  
INCORPORATING THE PEAK DISTRICT  
NATIONAL PARK AND  
LINCOLNSHIRE WOLDS AONB  
Map 1  
Regional Landscape Character Types



**Legend**

- Study Area Boundary
- Built Up Area
- Group 1: Coast and Sea**
- 1a: Coastal Saltmarshes and Mudflats
- 1b: Coastal Dunes, Beach and Intertidal Sand Flats
- 1c: Shallow Coastal Waters
- 1d: Shallow Inlet Bay
- 1e: Offshore Industries, Fisheries and Navigations
- Group 2: Fenland and Fenland Margins**
- 2a: Settled Fens and Marshes
- 2b: Planned and Drained Fens and Carrlands
- 2c: Fen and Marsh Margin Farmlands

- Group 3: River Valley Floodplains**
- 3a: Floodplain Valleys
- 3b: Sandland Farmlands
- Group 4: Lowland Vales**
- 4a: Unwooded Vales
- 4b: Wooded Vales
- Group 5: Village Farmlands**
- 5a: Village Farmlands
- 5b: Wooded Village Farmlands
- 5c: Undulating Mixed Farmlands

- Group 6: Limestone Farmlands**
- 6a: Limestone Scarps and Dipslopes
- 6b: Upland Limestone Pastures
- 6c: Limestone Dales
- 6d: Limestone Farmlands
- Group 7: Chalk Wolds**
- 7a: Chalk Wolds
- 7b: Wolds Scarps, Ridges and Valleys
- Group 8: Clay Wolds**
- 8a: Clay Wolds
- Group 9: Coalfields**
- 9a: Settled Coalfield Farmlands

- Group 10: Woods and Forests**
- 10a: Forest Hills and Ridges
- 10b: Sandstone Forests and Heaths
- 10c: Wooded Slopes and Valleys
- 10d: Forested Ancient Hills
- Group 11: Gritstone Moors and Fringes**
- 11a: Open Moors and Inbye Land
- 11b: Moorland Valleys
- 11c: Settled Valleys and Enclosed Gritstone Uplands
- 11d: Upland Pastoral Hills and Valleys

X:\085757\_East Midlands Reg\GIS\Projects\Update\_March10\2757\_Map1.mxd