

# SOUTH SHIELDS FARM

## TOW LAW

### Proposed Opencast Coal Site

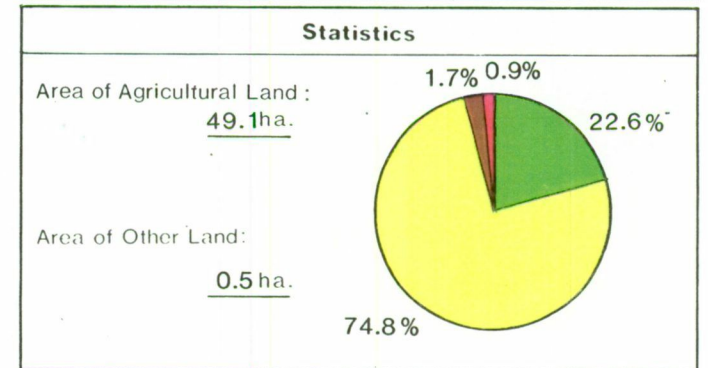
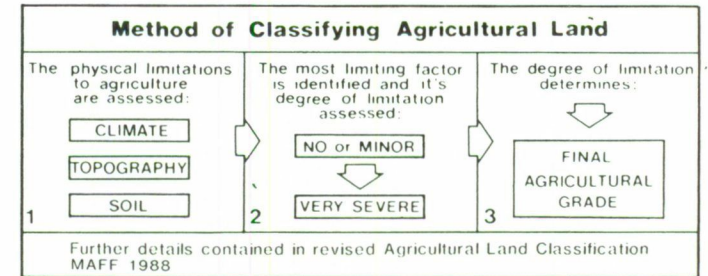


### Agricultural Land Classification

Agricultural Land			
Agricultural Grades	Agricultural Land Quality	Area within the site (ha.)	
Grade 1	Excellent	Nil	
Grade 2	Very Good	Nil	
Grade 3	Good	11.2	Sub-Grade 3a
	Moderate		Sub-Grade 3b
Grade 4	Poor	37.1	
Grade 5	Very Poor	0.8	

Land in Other Categories		
		Area within the site (ha.)
Urban <i>Including housing, industry, commerce, derelict land, sports facilities, transport.</i>		0.5
Non-agricultural <i>Including golf courses, parks, sports fields, allotments, airfields.</i>		Nil
Woodland <i>Farm woodland</i>		Nil
<i>Commercial woodland</i>		Nil
Agricultural buildings <i>Including glasshouses</i>		Nil
Open water		Nil
Land not surveyed		Nil

Scale 1:6,500



Ministry of Agriculture,  
Fisheries and Food.

Information compiled by Resource Planning Group  
Farm and Countryside Service, Leeds R.O.  
Map produced by Resource Planning Cartographic Unit  
Project Number 35/92

Ordnance Survey maps reproduced with the  
permission of the Controller H.M.S.O.

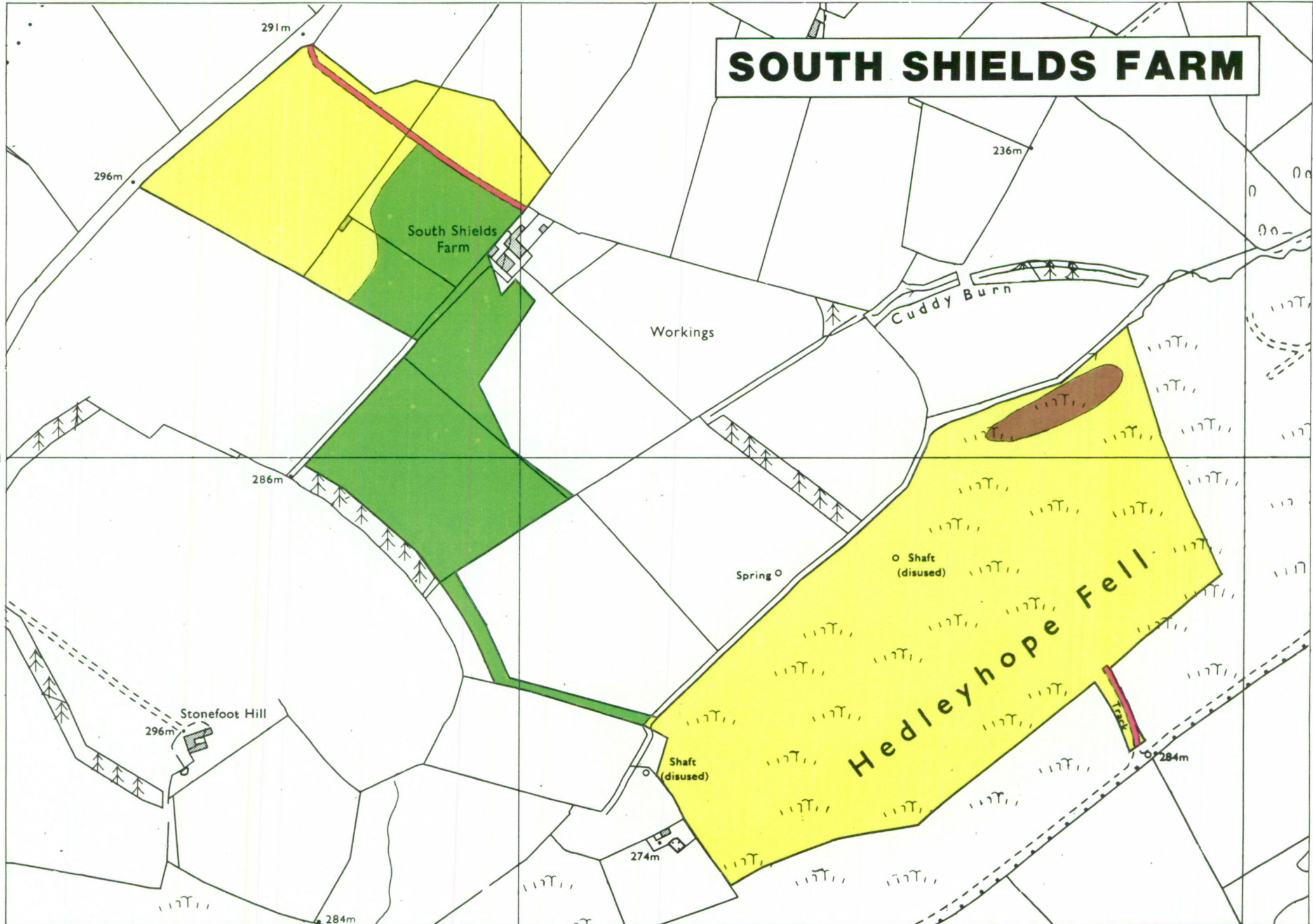
© Crown Copyright Reserved 1992

SOURCE MAPS

1:10,000

NZ14SW

# SOUTH SHIELDS FARM



291m

296m

South Shields Farm

236m

Cuddy Burn

Workings

41

41

286m

Spring

Shaft (disused)

## Hedleyhope Fell

Stonefoot Hill

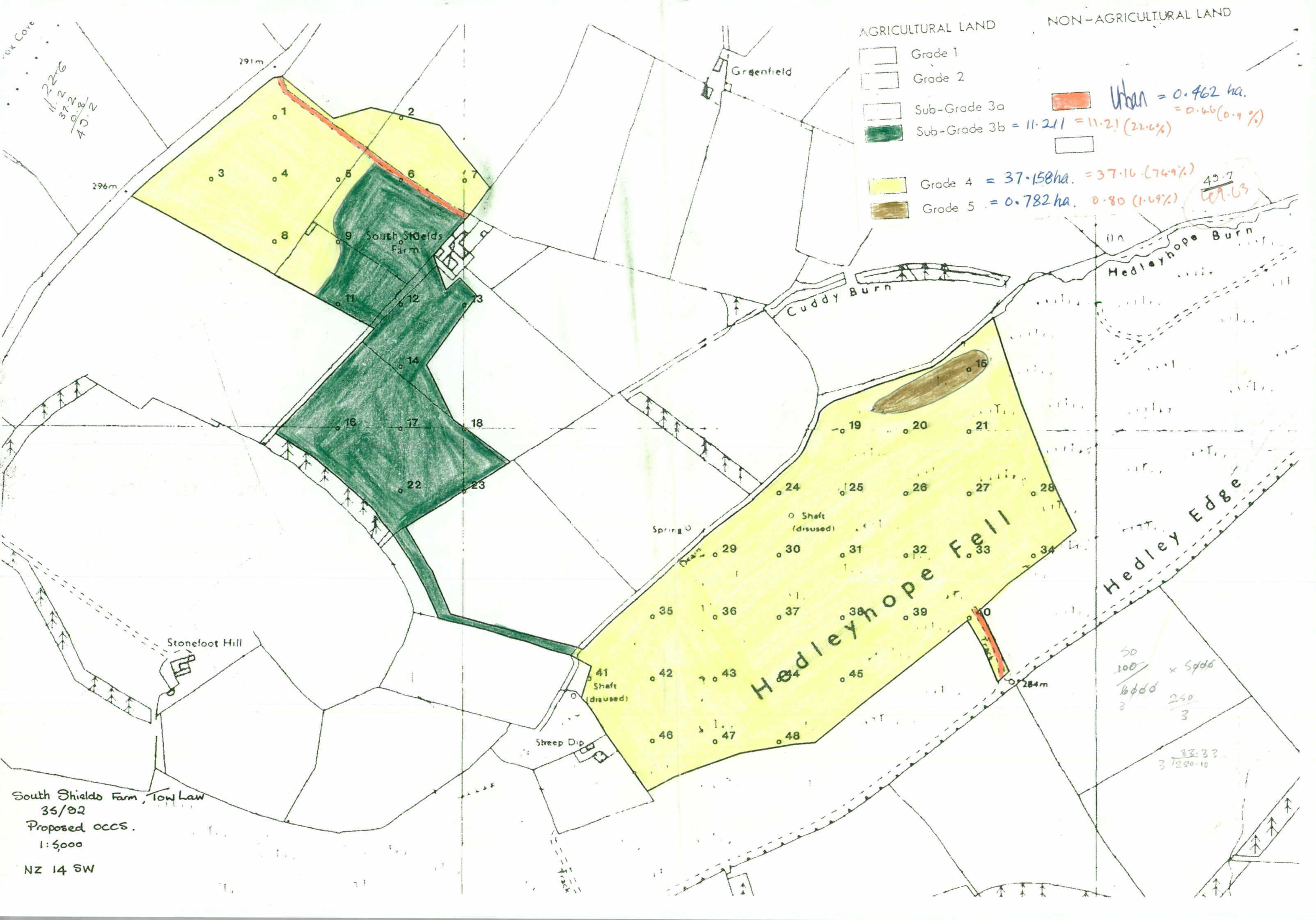
296m

Shaft (disused)

274m

284m

284m



South Shields Farm, Tow Law  
 35/82  
 Proposed OCCS.  
 1:5000  
 NZ 14 SW

# SOUTH SHIELDS FARM

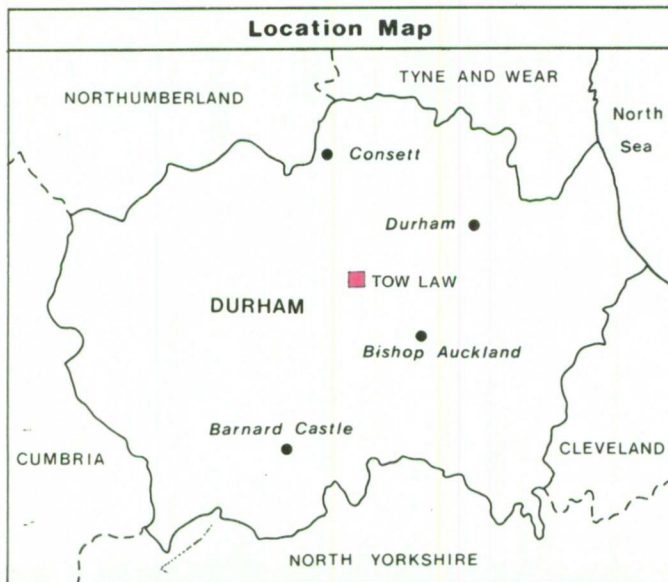
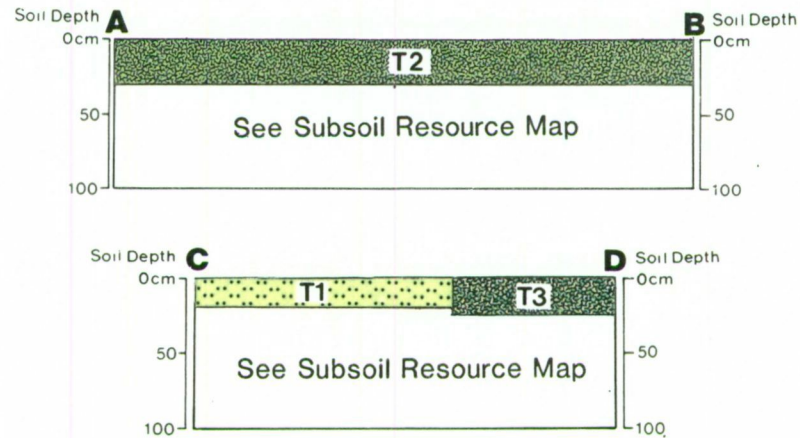
## TOW LAW

### Proposed Opencast Coal Site

Scale 1:6,500



### Topsoil Resource Map



Unit	Soil Texture	Soil Thickness (cm.)			Area (ha.)	Volume*1 (000m <sup>3</sup> )
		Min.	Mean	Max.		
T1	Organic	10	20	100	17.9	35.8
T2	Medium (restored)	15	30	70	20.4	61.2
T3	Heavy (restored)	0	25	70	11.3	28.2

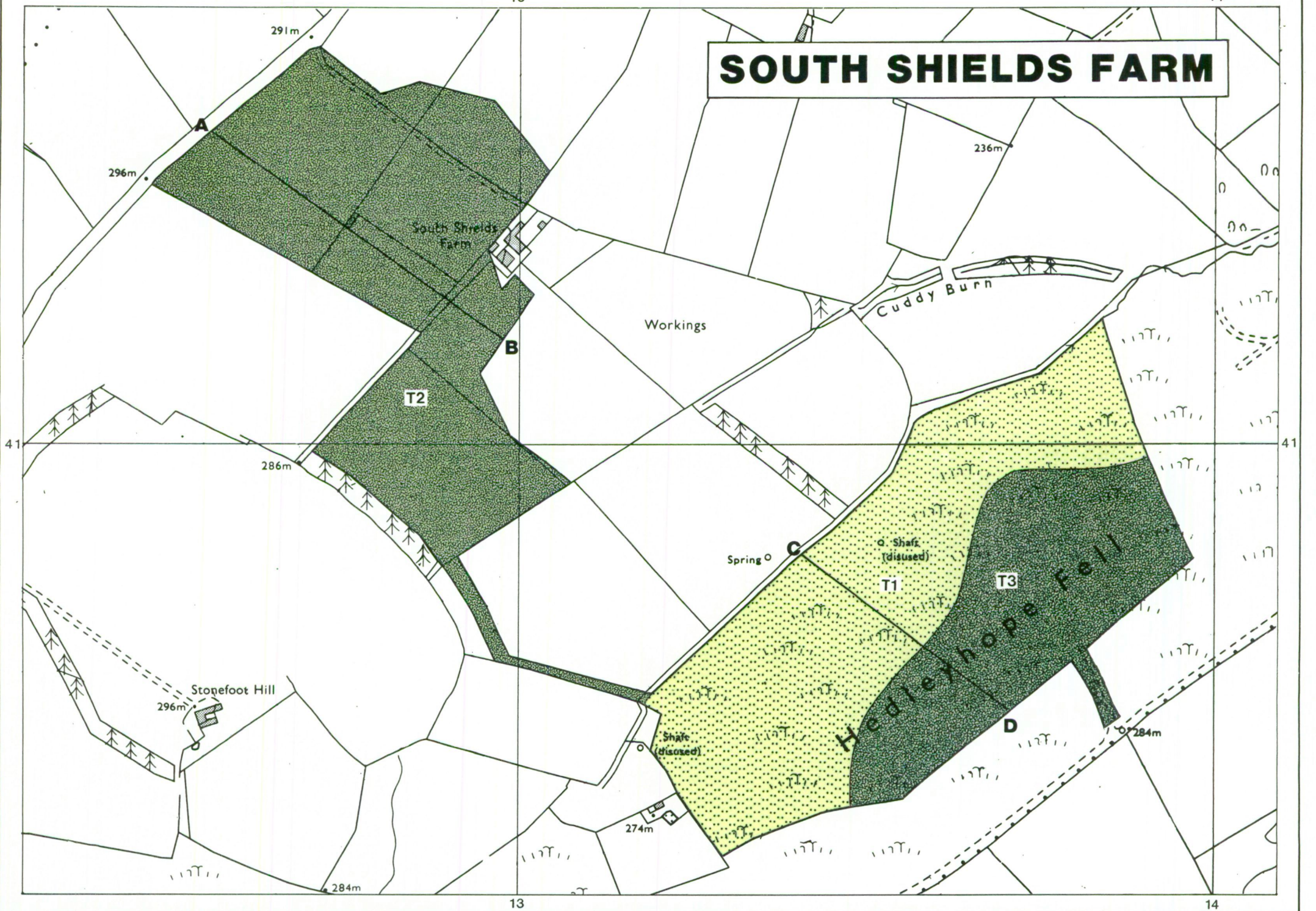


Ministry of Agriculture,  
Fisheries and Food.

Information compiled by Resource Planning Group,  
Farm and Countryside Service, Leeds R.O.  
Map produced by Resource Planning Cartographic Unit  
Project Number 35/92  
Ordnance Survey maps reproduced with the  
permission of the Controller, H.M.S.O.  
© Crown Copyright Reserved 1992

SOURCE MAPS  
1:10,000  
NZ14SW

# SOUTH SHIELDS FARM

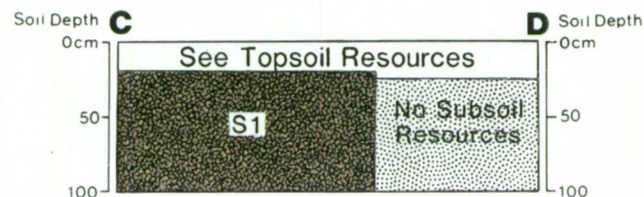
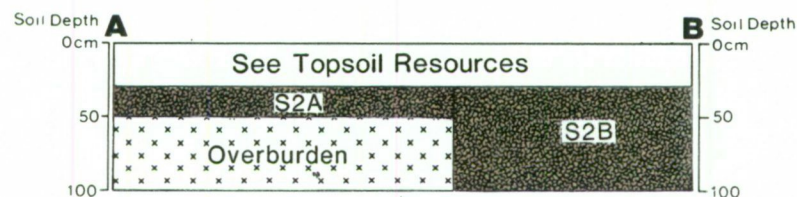


# SOUTH SHIELDS FARM

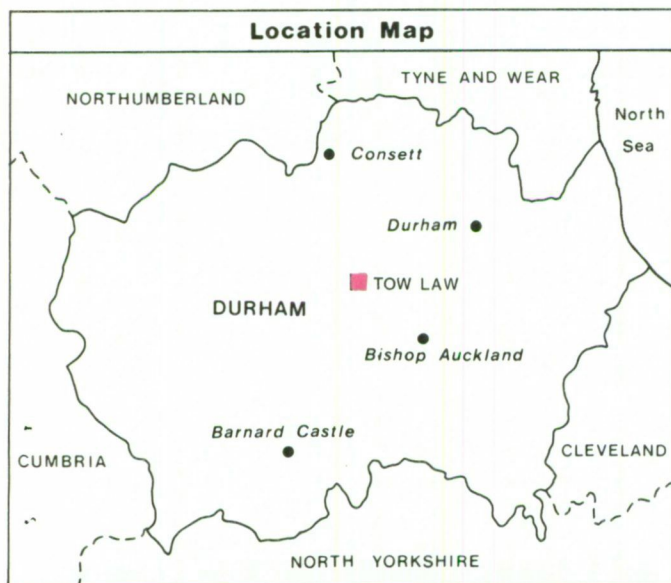
## TOW LAW

### Proposed Opencast Coal Site

Scale 1:6,500



Location Map



Unit	Soil Texture	Mean Soil Thickness(cm)	Area (ha)	Volume (000m <sup>3</sup> )
S1	Heavy	80	17.9	143.2
S2A	Heavy	20	9.2	18.4
S2B	Heavy	70	11.2	78.4



Ministry of Agriculture,  
Fisheries and Food.

Information compiled by Resource Planning Group,  
Farm and Countryside Service, Leeds R.O.  
Map produced by Resource Planning Cartographic Unit  
Project Number 35/92  
Ordnance Survey maps reproduced with the  
permission of the Controller, H.M.S.O  
© Crown Copyright Reserved 1992

SOURCE MAPS

1:10,000

NZ14SW

# SOUTH SHIELDS FARM

