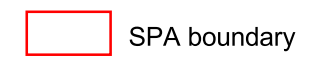


1976



Key:



Source:

Title:
Saltmarsh extent in Chichester
Harbour SPA 1976

Project:
Coastal Squeeze, Saltmarsh Loss and
Special Protection Areas

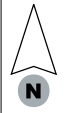
Client:
English Nature

Date:
November 2004

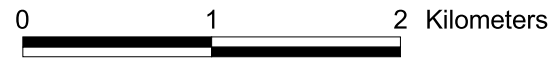
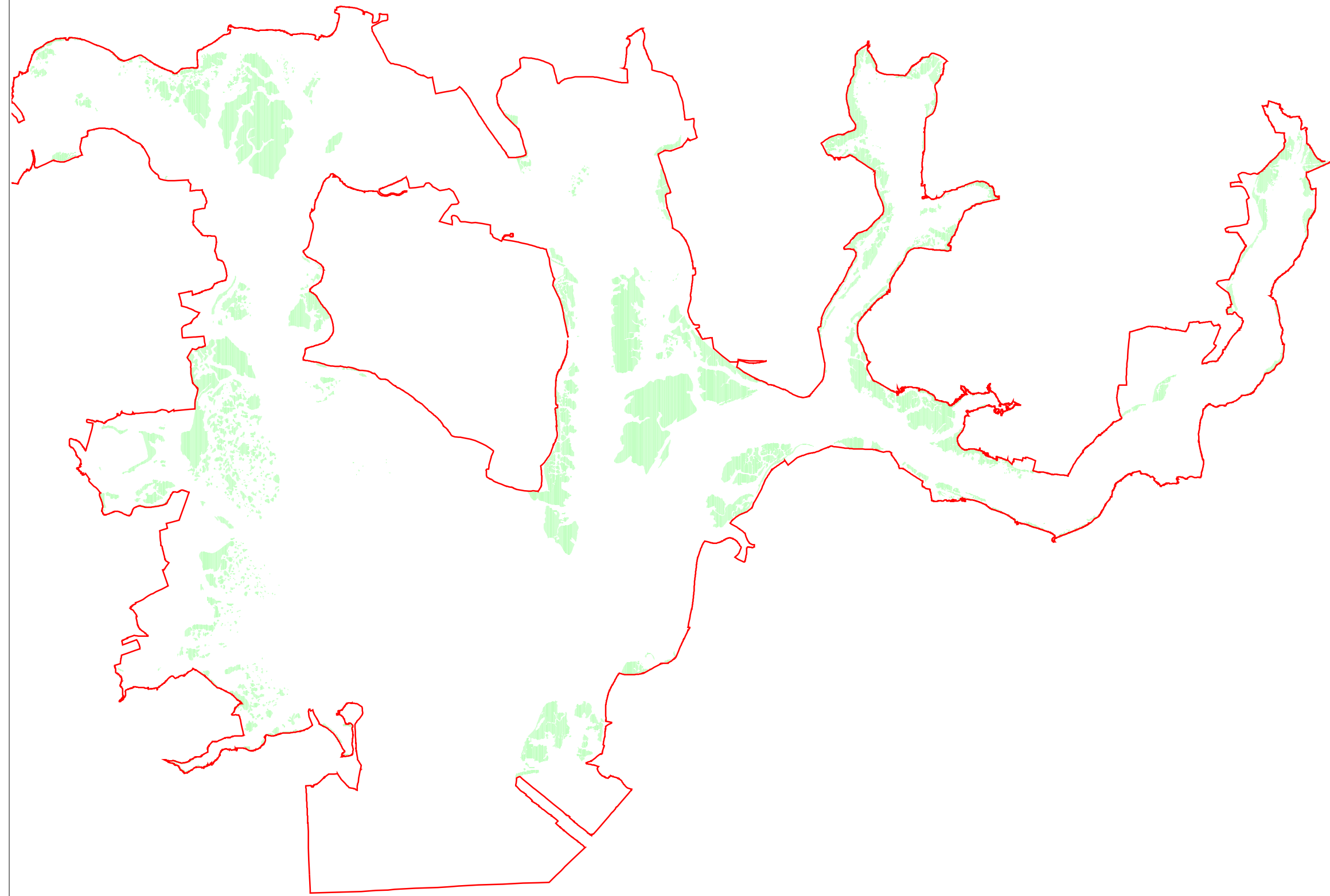
Scale:
1:40000

Figure:
3.11a

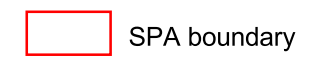




2001



Key:



Source:

Title:
Saltmarsh extent in Chichester
Harbour SPA 2001

Project:
Coastal Squeeze, Saltmarsh Loss and
Special Protection Areas

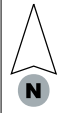
Client:
English Nature

Date:
November 2004

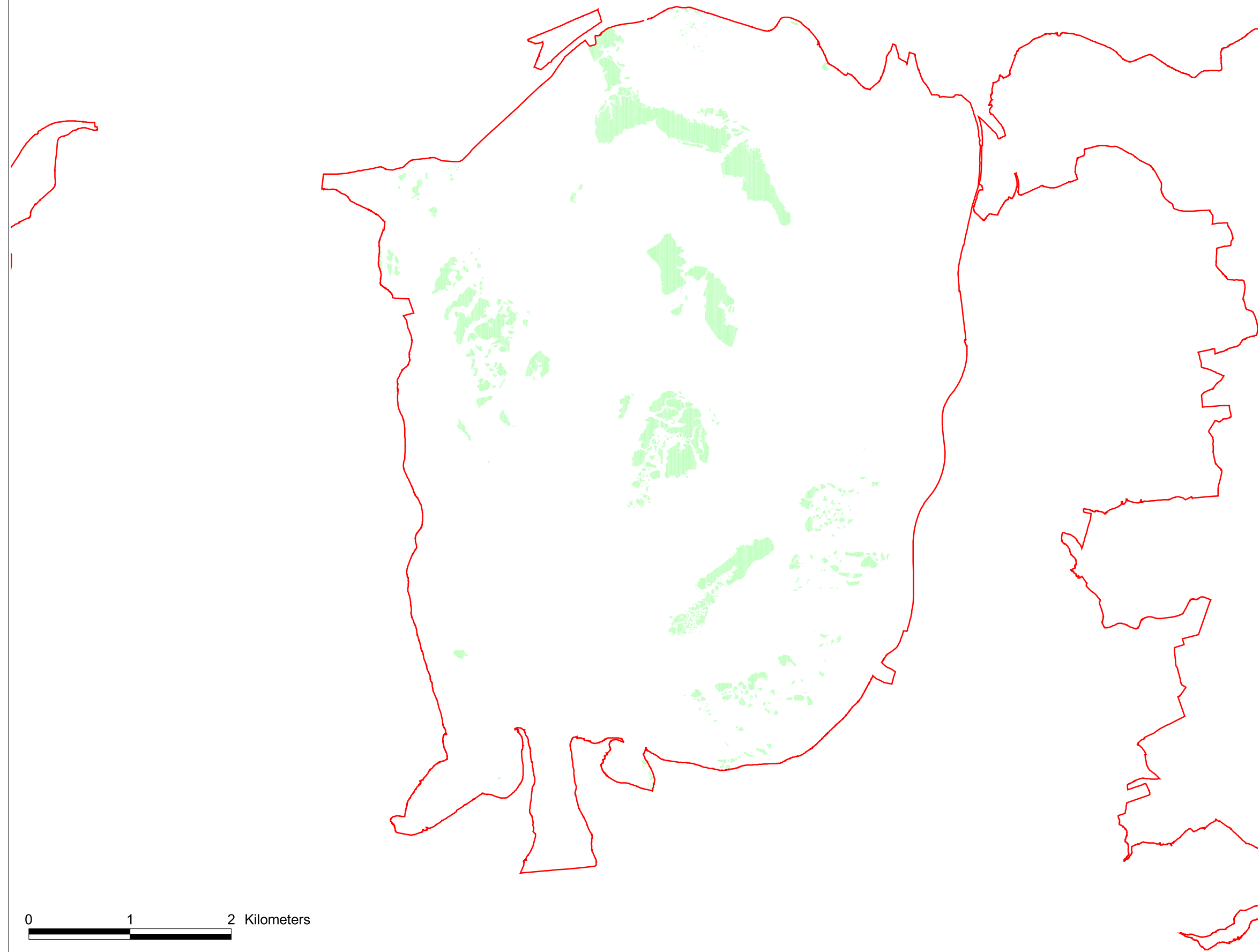
Scale:
1:40000

Figure:
3.11b





1971



Key:



Source:

Title:
Saltmarsh extent in Langstone
Harbour SPA 1971

Project:
Coastal Squeeze, Saltmarsh Loss and
Special Protection Areas

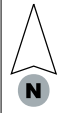
Client:
English Nature

Date:
November 2004

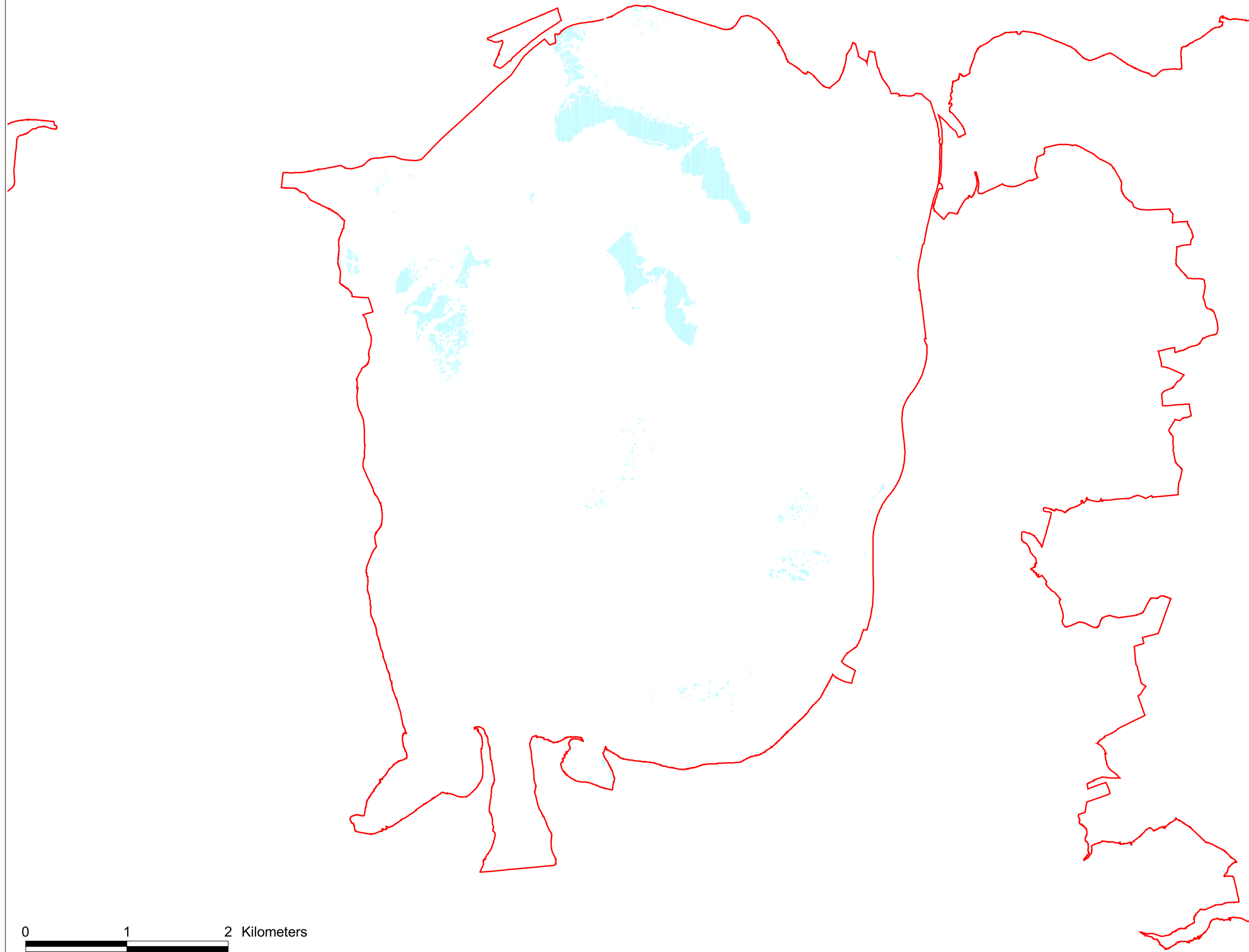
Scale:
1:30000

Figure:
3.12a

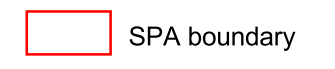




2001



Key:



Source:

Title:
Saltmarsh extent in Langstone
Harbour SPA 2001

Project:
Coastal Squeeze, Saltmarsh Loss and
Special Protection Areas

Client:
English Nature

Date:
November 2004

Scale:
1:30000

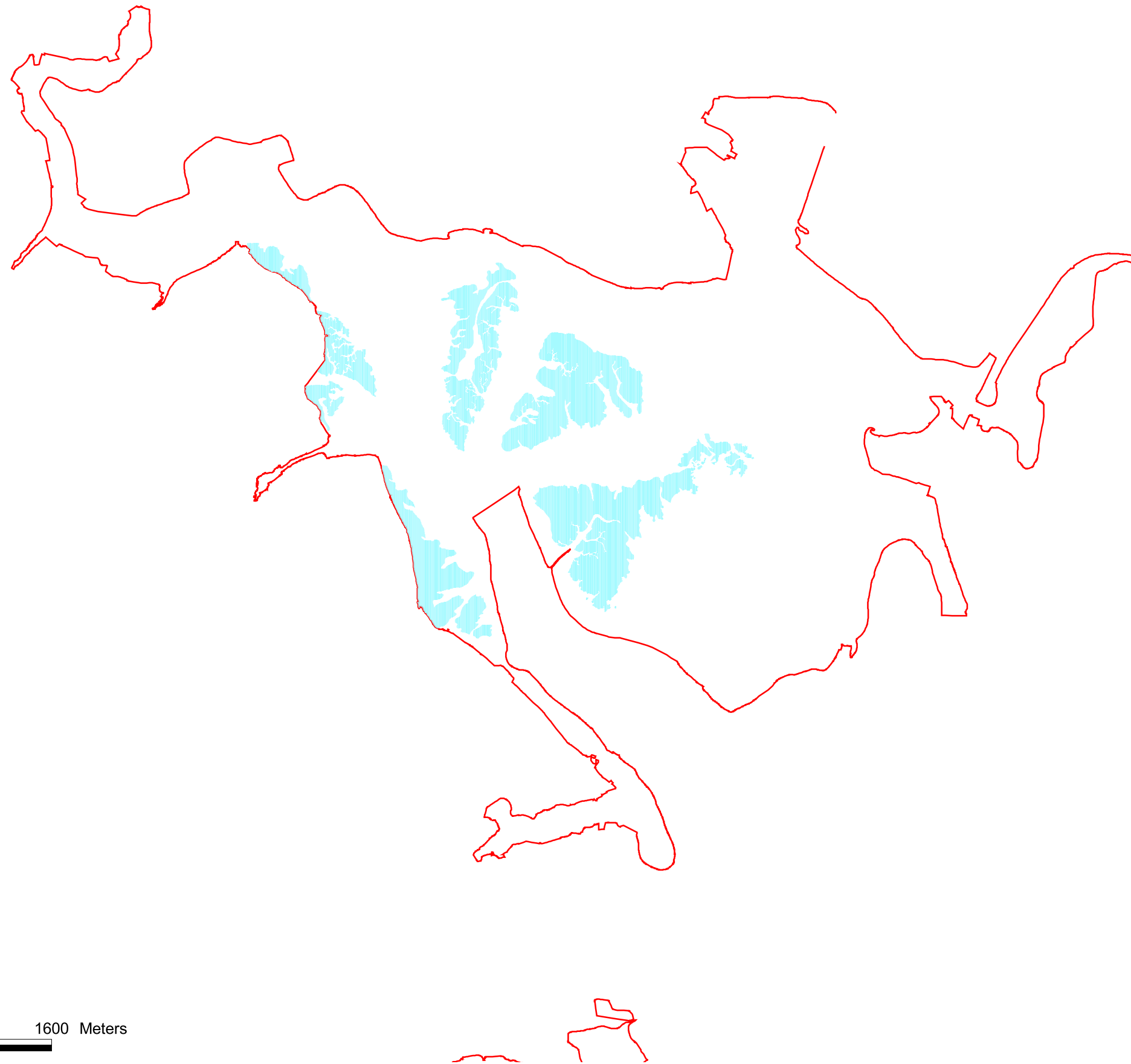
Figure:
3.12b

0 1 2 Kilometers





1971



0 800 1600 Meters

Key:

 SPA boundary

Source:

Title:
Saltmarsh extent in Portsmouth Harbour
SPA 1971

Project:
Coastal Squeeze, Saltmarsh Loss and
Special Protection Areas

Client:
English Nature

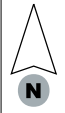
Date:
November 2004

Scale:
1:30000

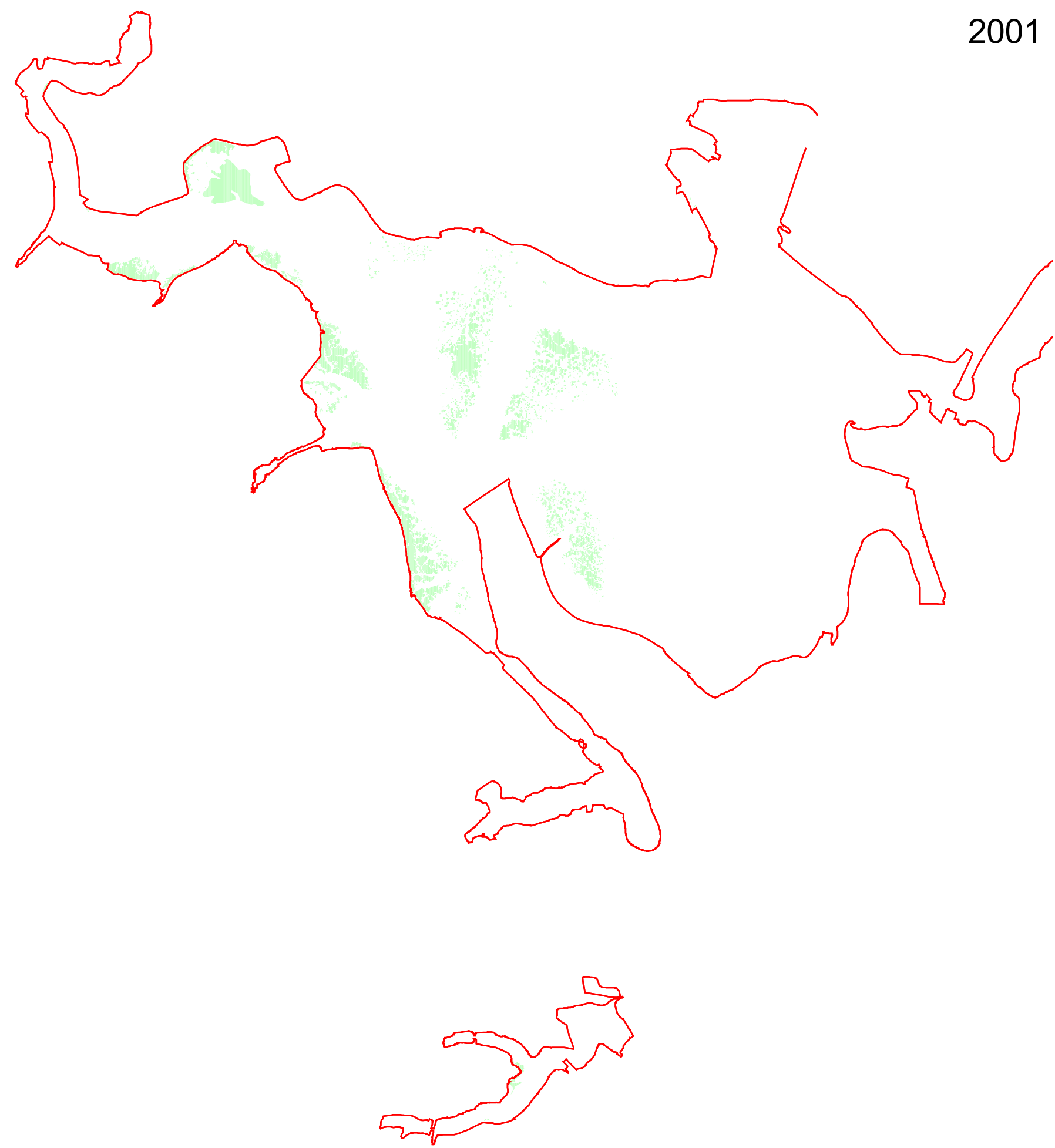
Figure:
3.13a



ROYAL HASKONING



2001



Key:



Source:

Title:
Saltmarsh extent in Portsmouth Harbour
SPA 2001

Project:
Coastal Squeeze, Saltmarsh Loss and
Special Protection Areas

Client:
English Nature

Date:
November 2004

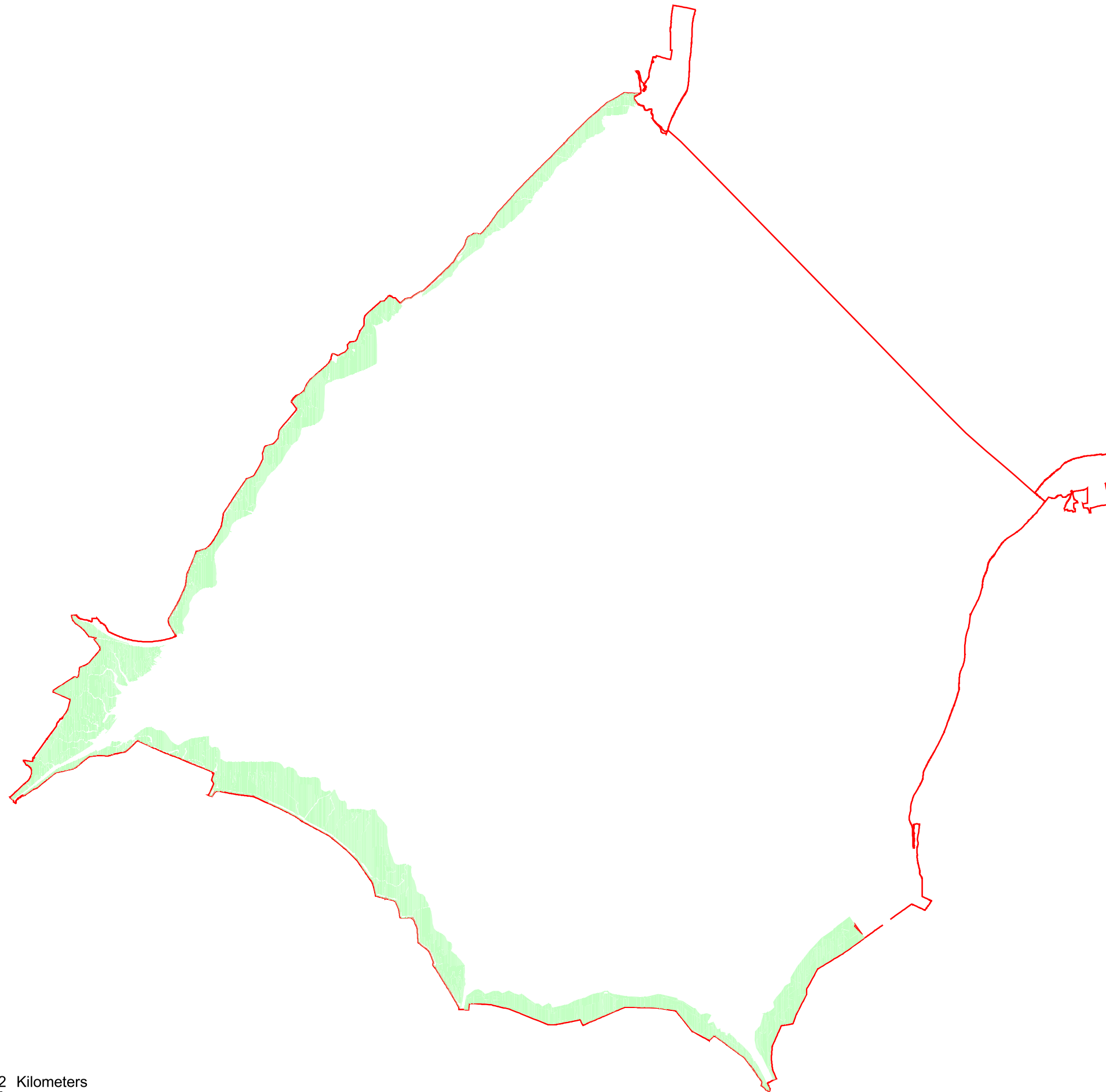
Scale:
1:30000

Figure:
3.13b





2001/2002



0 1 2 Kilometers

Key:

 SPA boundary

Source:

Title:
Saltmarsh extent in The Wash
SPA 2001/2002

Project:
Coastal Squeeze, Saltmarsh Loss and
Special Protection Areas

Client:
English Nature

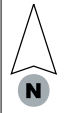
Date:
November 2004

Scale:
1:150000

Figure:
3.14



ROYAL HASKONING



1946-48



Key:



Source:

Title:
Saltmarsh extent in the Severn Estuary
SPA 1946-1948

Project:
Coastal Squeeze, Saltmarsh Loss and
Special Protection Areas

Client:
English Nature

Date:
November 2004

Scale:
1:250000

Figure:
3.15a





2000



0 800 1600 Me

Key:

 SPA boundary

Source:

Title:
Saltmarsh extent in the Severn Estuary
SPA 2000

Project:
Coastal Squeeze, Saltmarsh Loss and
Special Protection Areas

Client:
English Nature

Date:
November 2004

Scale:
1:250000

Figure:
3.15b



ROYAL HASKONING



English Nature is the Government agency that champions the conservation of wildlife and geology throughout England.

This is one of a range of publications published by:
External Relations Team
English Nature
Northminster House
Peterborough PE1 1UA

www.english-nature.org.uk

© English Nature 2002/3

Cover printed on Character Express, post consumer waste paper, ECF.

ISSN 0967-876X

Cover designed and printed by Status Design & Advertising, 2M, 5M, 5M.

You may reproduce as many copies of this report as you like, provided such copies stipulate that copyright remains with English Nature, Northminster House, Peterborough PE1 1UA

If this report contains any Ordnance Survey material, then you are responsible for ensuring you have a license from Ordnance Survey to cover such reproduction.

Front cover photographs:
Top left: Using a home-made moth trap.
Peter Wakely/English Nature 17,396
Middle left: CO₂ experiment at Roudsea Wood and Mosses NNR, Lancashire.
Peter Wakely/English Nature 21,792
Bottom left: Radio tracking a hare on Pawlett Hams, Somerset.
Paul Glendell/English Nature 23,020
Main: Identifying moths caught in a moth trap at Ham Wall NNR, Somerset.
Paul Glendell/English Nature 24,888



Awarded for excellence