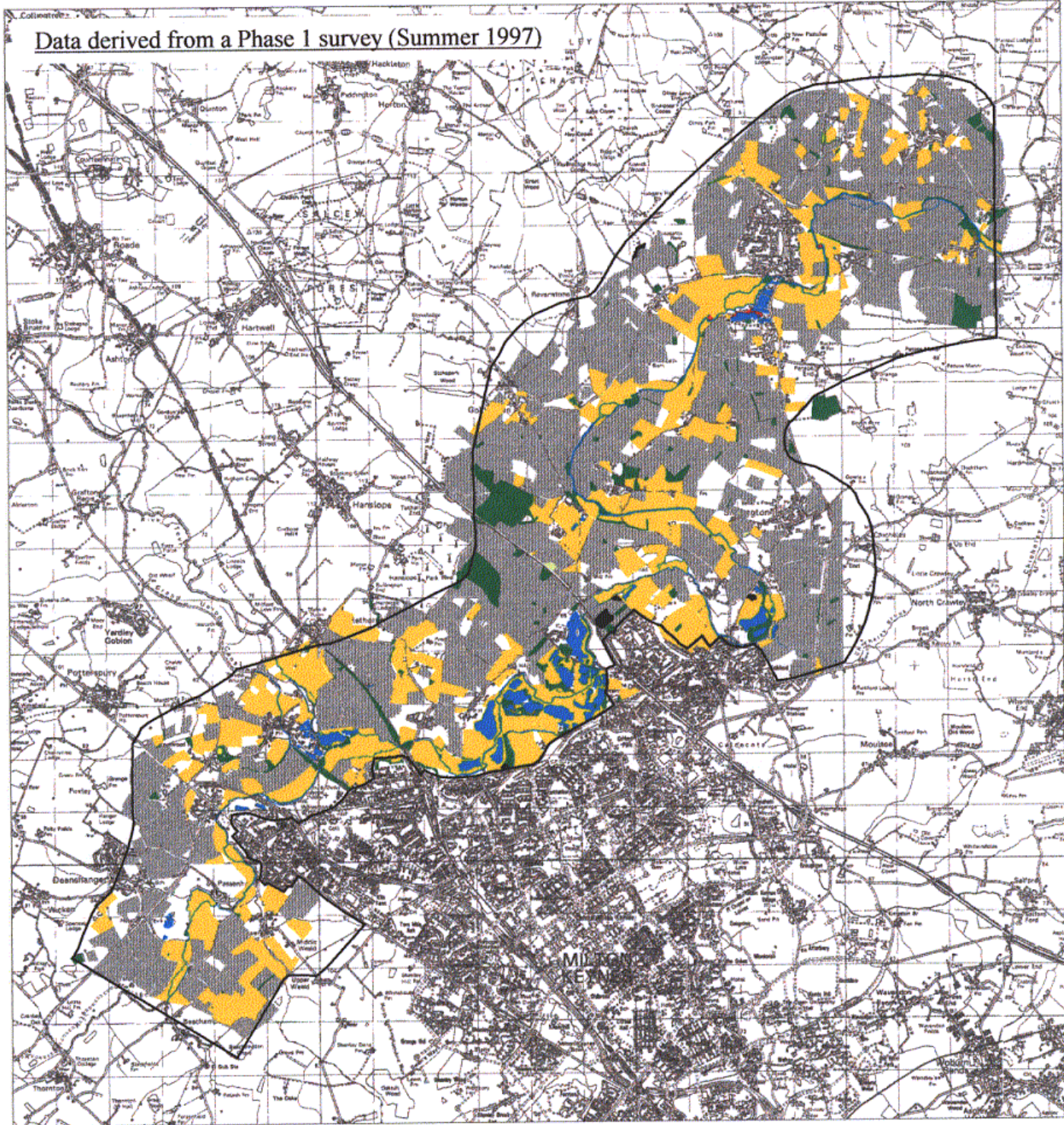


Figure 4.3.1

Distribution of BAP Broad Habitats



**BAP Broad Habitats**

- Broadleaved, mixed and yew woodland
- Coniferous woodland
- Neutral grassland
- Calcareous grassland
- Improved grassland
- Fen, marsh and swamp
- Standing open water and canals
- Rivers and streams
- Inland rock (Quarry)
- Arable and horticulture

White space represents unsurveyed or built up areas

1:100000



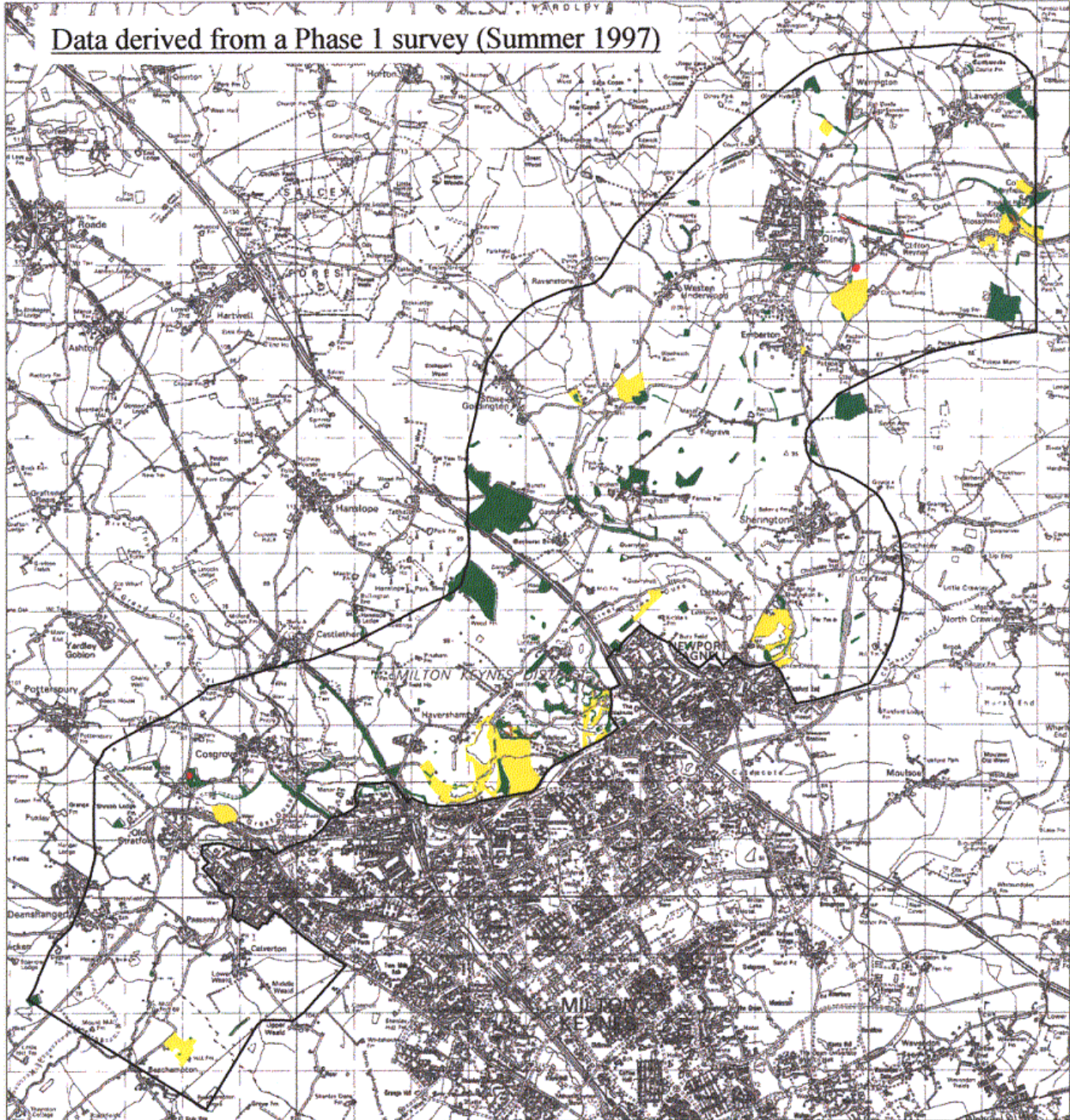
This map is reproduced from the OS map by English Nature with the permission of Ordnance Survey on behalf of The Controller of Her Majesty's Stationery Office, © Crown Copyright. All rights reserved.





Unauthorised reproduction infringes Crown Copyright and may lead to prosecution or civil proceedings. Licence Number: GD272299.

**Figure 4.3.2**

**Ouse Valley**

**Distribution of BAP Priority Habitats with Semi-improved Grassland and Broadleaved, Mixed and Yew Woodland**



-  Lowland calcareous grassland
-  Other semi(un) - improved grassland
-  Fens
-  Broadleaved, mixed and yew woodland

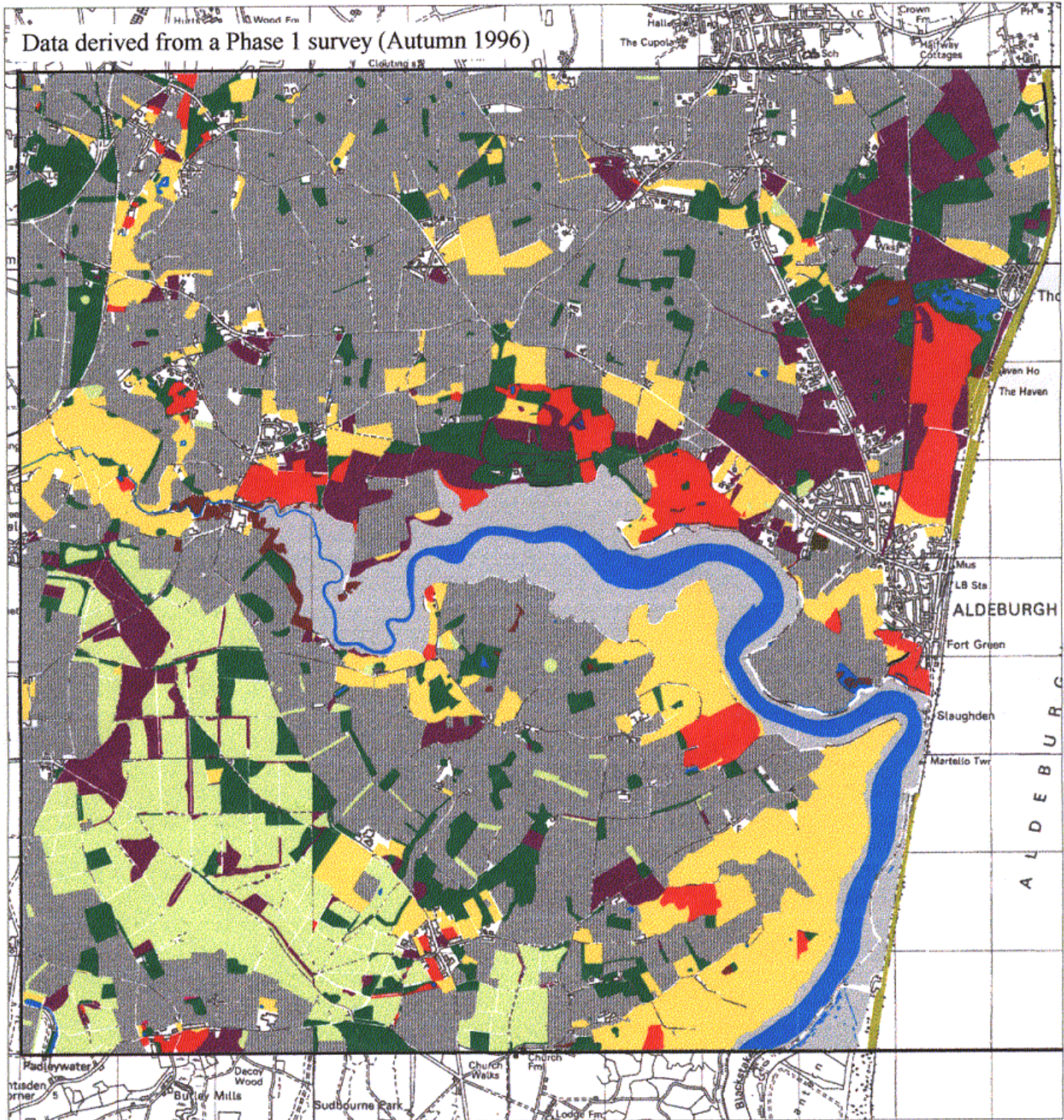
1:100000



This map is reproduced from the OS map by English Nature with the permission of Ordnance Survey on behalf of The Controller of Her Majesty's Stationery Office, © Crown Copyright. All rights reserved.  
Unauthorised reproduction infringes Crown Copyright and may lead to prosecution or civil proceedings. Licence Number: GD272299.

Figure 4.4.1

Distribution of BAP Broad Habitats



- Broadleaved, mixed and yew woodland
- Coniferous woodland
- Acid grassland/heath
- Neutral grassland
- Calcareous grassland
- Fen, marsh and swamp
- Standing open water and canals
- Rivers and streams
- Littoral sediment
- Supralittoral sediment
- Supralittoral rock
- Inland rock
- Improved grassland
- Arable and horticulture (incl. outdoor pig enclosures)

White space represents unsurveyed or built up areas.

1:60000

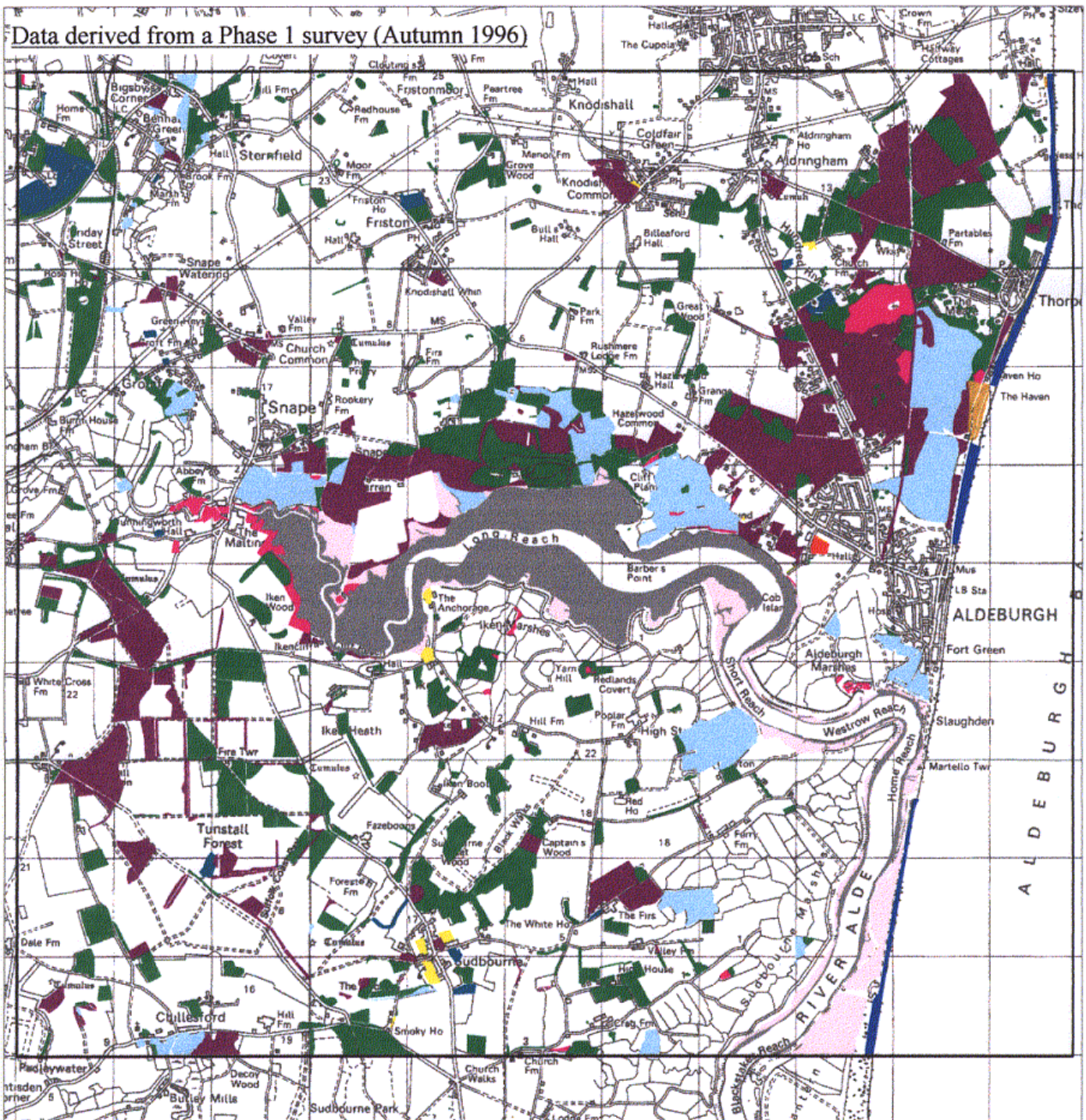


Reproduced from the Ordnance Survey 1:50000 map with the permission of the Controller of Her Majesty's Stationery Office. © Crown Copyright Licence no. GD272299. Produced by the Geographic Information Unit, English Nature © English Nature 1999.

Figure 4.4.2

Alde

Distribution of BAP Priority Habitats with Broadleaved, mixed and yew woodland



- Lowland wood pasture and parkland
- Other broadleaved, mixed and yew woodland
- Heathland and acid grassland
- Coastal and floodplain grazing marsh
- Other neutral grassland
- Lowland calcareous grassland
- Reedbeds
- Saltmarsh and saline lagoons
- Mudflats
- Coastal sand dunes
- Coastal vegetated shingle

1:60000



Reproduced from the Ordnance Survey 1:50000 map with the permission of the Controller of Her Majesty's Stationery Office.  
 © Crown Copyright Licence no. GD272299.  
 Produced by the Geographic Information Unit, English Nature  
 © English Nature 1999.

# Distribution of Restoration/Creation Work in the Trial Areas

Figure 6.1 Blackmore Vale

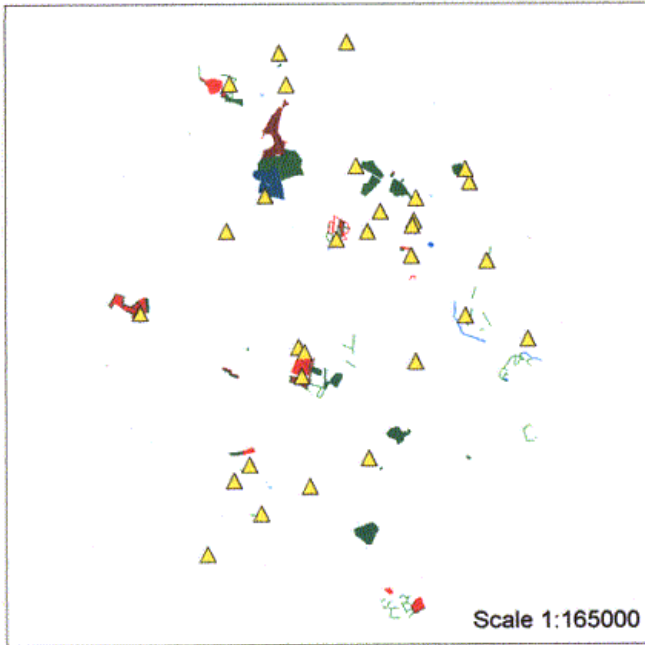


Figure 6.2 Sherwood

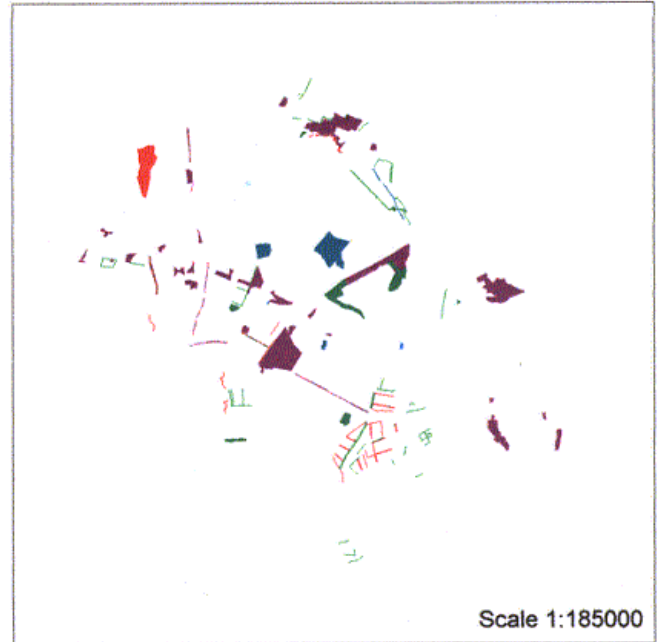


Figure 6.3 Ouse

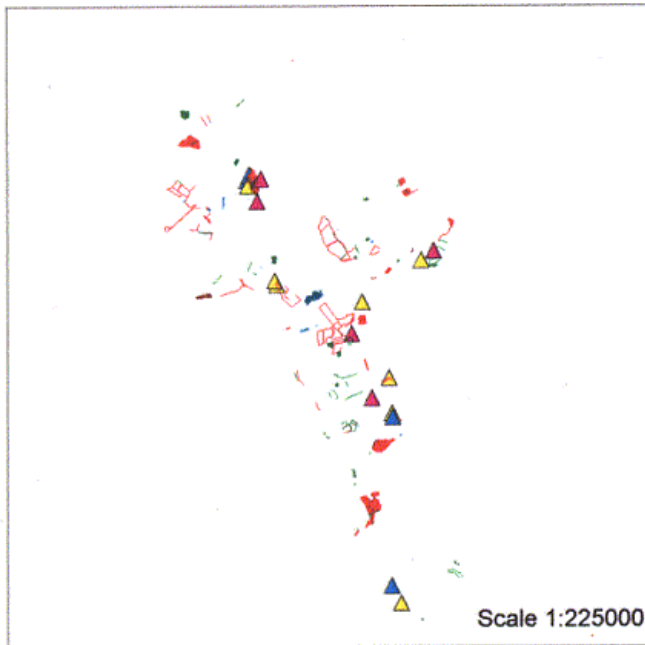
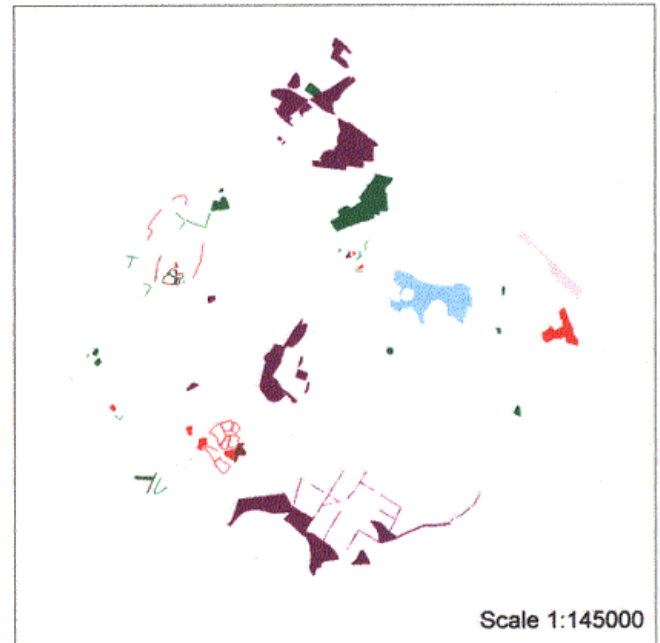
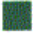















Figure 6.4 Alde



## Description of Restoration/Creation Schemes

 Woodland	 Hedgerow
 Parkland	 Arable field margin
 Grazing marsh	 River margin
 Grassland	 Barn owl box
 Heath/acid grassland	 Wader scrape
 Swamp/reedbed	 Otterholt/wild bird cover
 Ponds/standing water	
 Saltmarsh	

Figures 6.1 to 6.4 have been distorted geographically to protect land-owner confidentiality

This map is reproduced from the OS map by English Nature with the permission of Ordnance Survey on behalf of The Controller of Her Majesty's Stationery Office, © Crown Copyright. All rights reserved. Unauthorised reproduction infringes Crown Copyright and may lead to prosecution or civil proceedings. Licence Number: GD272299.