

Tetrad: <b>15. FRAMLINGHAM</b>	Grid ref: <b>TM3065</b>	Hedge length: <b>18.4 km</b>
Natural Area: <b>Plain</b>	woodland cover: <b>&lt;1%</b>	habitation cover: <b>0 %</b>
Land use: <b>Agriculture</b>	air photo date: <b>10Oct96</b>	road length: <b>5.3km</b>
Water features: <b>1 stream</b>	air photo nos: <b>836,837</b>	railway length: <b>0 km</b>
<b>Remarks: A sparsely populated tetrad just to the North East of Framlingham.</b>		



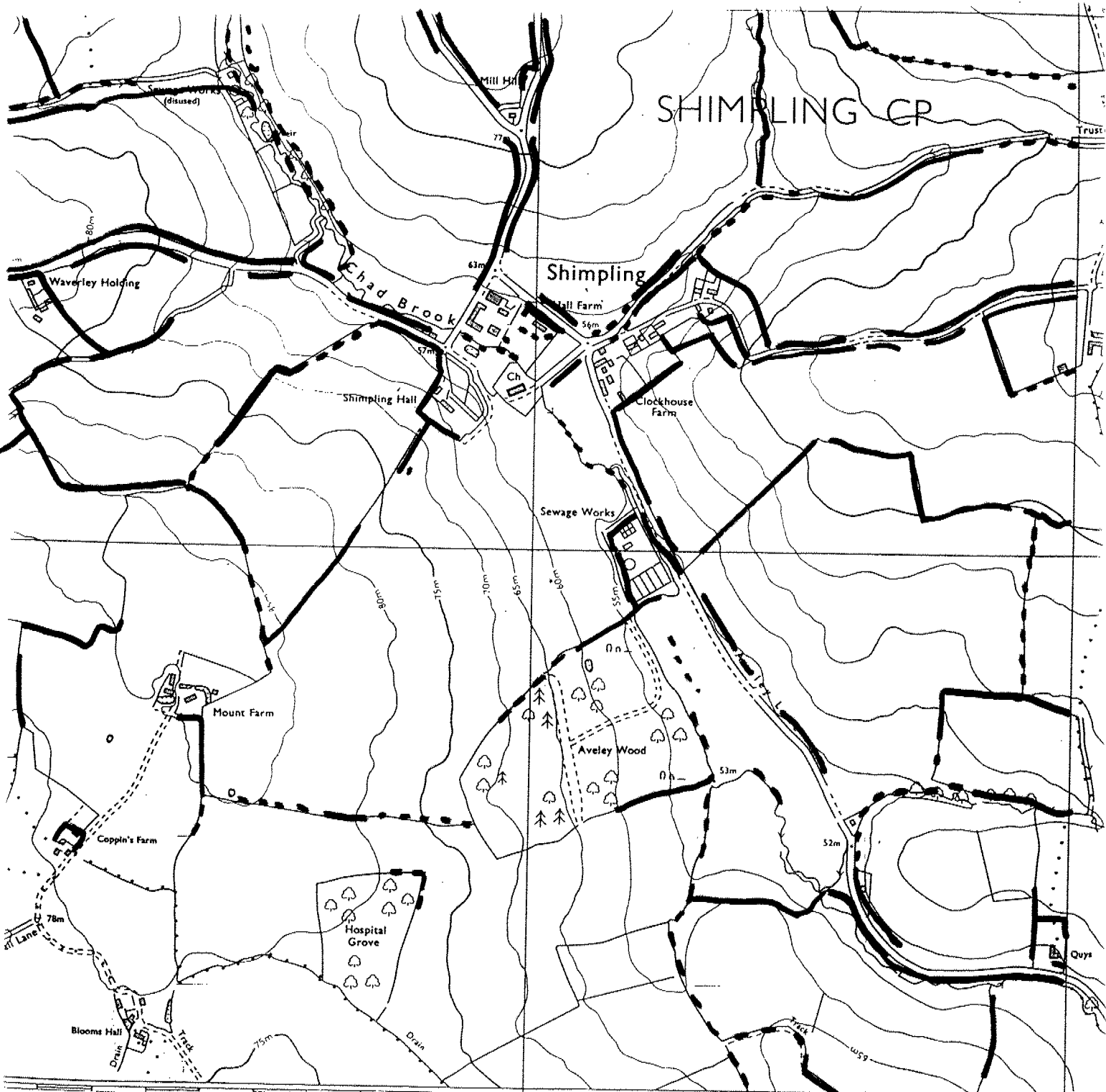
Tetrad: 16. SAXMUNDHAM	Grid ref: TM4065	Hedge length: 19.0 km
Natural Area: Plain	woodland cover: 2%	habitation cover: 0 %
Land use: Agriculture	air photo date: 10Oct96	road length: 3.1km
Water features: none	air photo no: 848	railway length: 0.2 km
Remarks: Numerous small farms and a high hedge density, particularly in the SW quadrant, at 7.3km/sqkm. NE quadrant under-recorded due to difficult access.		



Tetrad: <b>17. MINSMERE</b>	Grid ref: <b>TM4665</b>	Hedge length: <b>2.2 km</b>
Natural Area: <b>Coastal</b>	woodland cover: <b>1%</b>	habitation cover: <b>0 %</b>
Land use: <b>Nature Reserve (RSPB)</b>	air photo date: <b>8Oct95</b>	road length: <b>nil</b>
Water features: <b>Sea(7%),Foreshore(5%),Meres(9%),Marshes(25%),drains.</b>	air photo nos: <b>857</b>	railway length: <b>nil</b>
<b>Remarks: Tetrad contains 2.5% of Suffolk's coastline. The hedge count is very low, and zero in the SE sector. Also hedge quality is poor, with a high proportion broken.</b>		



Tetrad: <b>18. SHIMPLING</b>	Grid ref: TL8550	Hedge length: 14.1 km
Natural Area: <b>Plain (Southern clay)</b>	woodland cover: 4%	habitation cover: <1 %
Land use: <b>Agriculture</b>	air photo date: <b>23Oct96</b>	road length: 3.6km
Water features: <b>1 stream</b>	air photo nos: <b>1517,1518,1607</b>	railway length: 0 km
<b>Remarks: Only 1.4km in SW sector due to large fields and relict hedgelines.</b>		



Tetrad: <b>19. BURES GREEN</b>	Grid ref: <b>T9035</b>	Hedge length: <b>17.0 km</b>
Natural Area: <b>Plain</b>	woodland cover: <b>4%</b>	habitation cover: <b>&lt;1 %</b>
Land use: <b>Agriculture</b>	air photo date: <b>30Oct95</b>	road length: <b>4.4km</b>
Water features: <b>0.9km of R.Stour</b>	air photo nos: <b>2225,2279,2280</b>	railway length: <b>nil</b>
Remarks: -		



Tetrad: 20. THORINGTON St	Grid ref: TM0035	Hedge length: 16.5 km
Natural Area: Plain	woodland cover: 6%	habitation cover: 1.5 %
Land use: Agriculture	air photo date: 30 Oct 95	road length: 5.4 km
Water features: R.Box, 1 reservoir	air photo nos: 2236, 2291, 2292	railway length: 0 km
Remarks: The willows bordering the River Box were not counted.		





Tetrad: <b>22. SHOTLEY Peninsula</b>	Grid ref: <b>TM2035</b>	Hedge length: <b>10.7 km</b>
Natural Area: <b>Coastal</b>	woodland cover: <b>13%</b>	habitation cover: <b>nil</b>
Land use: <b>Agriculture, woodland</b>	air photo date: <b>30May96</b>	road length: <b>0.9km</b>
Water features: <b>Coast 1km to north.</b>	air photo nos: <b>2260,2316</b>	railway length: <b>0 km</b>
<b>Remarks: Somewhat isolated, nice woods and hedges in south, but large fields in NE.</b>		



LONG 21  
SAMFORD RD



Tetrad: <b>23. GREAT BEALINGS</b>	Grid ref: <b>TM2348</b>	Hedge length: <b>20.5 km</b>
Natural Area: <b>Plain/Coast</b>	woodland cover: <b>6%</b> , plus orchards <b>4%</b>	habitation cover: <b>1%</b> , plus golf course <b>1%</b>
Land use: <b>Agriculture, orchards</b>	air photo date: <b>25Oct95</b>	road length: <b>8.3km</b>
Water features: <b>1 stream</b>	air photo nos: <b>1740,1741</b>	railway length: <b>0 km</b>
Remarks: Covered to provide overlap with "7 Parishes" hedge survey. A diverse tetrad with the 2nd highest count of the audit.		



Tetrad: <b>24. FELIXTOWE</b>	Grid ref: <b>TM3036</b>	Hedge length: <b>12.2 km</b>
Natural Area: <b>Coast</b>	woodland cover: <b>0%</b>	habitation cover: <b>6 %</b>
Land use: <b>Agriculture, marshes</b>	air photo date: <b>30Oct95</b>	road length: <b>5.3km</b>
Water features: <b>3.2km river, 24% marshland</b>	air photo nos: <b>2273</b>	railway length: <b>0 km</b>
Remarks: <b>Hedges extending towards the marshes result in 2.2km/sqkm even in the low scoring NW &amp; NE sectors.</b>		

